

MAY 2026

# Bentley & Binsted

PARISH MAGAZINE

## FEATURING

Mental Health Foundation 10

---

Scouts Jumble Sale 14

---

Bentley Flower & Produce Show 19

---

Binsted Parish Council 26

---

The Old Rec 28

---

Cover image © 2026 Nigel Hughes

## In this issue

<b>Prayer Week</b> .....	4
Work From Home .....	5
<b>Meet The Team - Nick</b> .....	6
The Bereavement Journey .....	8
<b>Mental Health Awareness Week</b> .....	9
Mental Health Foundation .....	10
<b>Upagear</b> .....	12
Four:Twelve .....	12
<b>Messy Church</b> .....	13
Children's Church .....	13
<b>Scouts Jumble Sale</b> .....	14
Binsted Fete .....	15
<b>Benefice Weekend Away</b> .....	16
Saturday Café .....	17
<b>Thought For The Month</b> .....	18
Binsted Coffee Shop .....	18
<b>Bentley Flower &amp; Produce Show</b> .....	19
Sudoku Games .....	20
<b>Wickham 100+ Club</b> .....	21
Binsted School .....	22
<b>Sea Shanty Evening</b> .....	24
Weather Statistics .....	25
<b>Binsted Parish Council</b> .....	26
Bentley Green: The Old Rec .....	28
<b>Wild Service</b> .....	30
Bentley Memorial Hall .....	32
<b>Bentley School News</b> .....	33
Dolls House Day .....	34
<b>Magazine Support</b> .....	35
Curtis Museum .....	36
<b>Sudoku Answers</b> .....	36
Church Registers .....	37
<b>Tennis or Croquet</b> .....	37
Spring Lunch .....	37
<b>Advertisements</b> .....	38
Local Contact Details .....	55
<b>Services</b> .....	56

## Vicar of Bentley, Binsted and Froyle

Rev'd Matt Boyes (Day off - Friday)

matt@benbinfro.co.uk | 07469 270590

C/O Church Office, St Mary's Church, Bentley, GU10 5NA

**Website:** www.benbinfro.co.uk

### Assistant Priest

Christopher Ogilvie Thompson (Day off - Tuesday)

Tel: 07776 178690 | email: christopherot@me.com

### Licensed Lay Minister

Steve Fice (Day off - Friday)

Tel: 07876 767990 | email:steve.fice@btinternet.com

### Anna Chaplain

Fran Harrison annachaplain@benbinfro.co.uk

### Benefice Administrators

Lucinda Edwards and Gemma Ball

(admin@benbinfro.org) 01420 23339

### Honorary Assistant Minister

David Perryman, Treetops, Upper Froyle

Tel. 07710 699183 david.perrypeople@gmail.com

### Parishes Prayer Chain

Nick Carter 01420 489122 or nick.carter1945@outlook.com

### Pastoral Care Team

Nick Carter 01420 489122 or nick.carter1945@outlook.com

**Readers** – Harold Fish, 6 Bonners Field, Bentley. 22947

### Bentley: St Mary's Churchwardens:

Jill Kiely, 11 Broadlands Close, Bentley, GU10 5LE - 22735

Nick Caddick, Tanners, GU10 5NE - 23229

### Binsted: Holy Cross Churchwardens

Jonathan Bourne, Sunnycroft, GU34 4PF – 07766206278

### Parish Safeguarding Officers: Bentley and Binsted

Jill Kiely, Bentley Parish Safeguarding Officer

safeguardingbentley@benbinfro.co.uk

Susan Bourne, Binsted Parish Safeguarding Officer

safeguardingbinsted@benbinfro.co.uk

### Parish Magazine

Articles and Advertising: Any copy or advertising enquiries

should be sent to Gemma Ball on the **5th** of the month,

by email (magazine@benbinfro.org)

**Editor:** Benefice Team

**Designer:** Mike Hammerton

**Treasurer:** Steve Fice, 07876 767990 steve.fice@btinternet.com

**Distribution:** Bentley – Gill Thallon: gill.thallon@outlook.com

Binsted – Linda & John Kenward: lindawellsuk@yahoo.co.uk

**W**e live in difficult times. Wars, political instability, issues of national identity, environmental damage, the list could go on. There is a sense of everything feeling fractured and raw. Of old certainties not working any longer and none of the alternatives appear very appealing. I would suggest that the peace we have enjoyed in the West for the last 80 years is what has really been unusual. We have assumed that this would continue forever, but now the list of societal dangers we have associated with other countries, is our experience. We are out of balance, hurt and bewildered.

I recently came across this quote, from the difficult to pronounce, John Chryssavgis, a Greek Orthodox theologian, “We are treating our planet in an inhuman and godforsaken manner, precisely because we see ourselves in this way.”

If we do not think that we have any intrinsic worth as humans, we will treat others as if they have no value and will be tempted to think this of ourselves too. That what we do, doesn't matter, and all that we work for, has no lasting worth either. We start acting selfishly, just doing what we want to do, without any thought or respect for others. Society begins to break apart.

If we think the world is godforsaken, that there is no plan or purpose in our lives, that there is no redemption and that everything is against us. Then we too, will not value what we have or appreciate the beauty

around us. It becomes more about what I can carve out for me. We end up embracing meaninglessness and hopelessness.

Is this the world we want? Is this how we want to see ourselves? Alone and lost in a pitiless world?

The Christian faith has the opposite diagnosis of what is happening around us. That we are created in the image of God. Precious, beautiful and purposeful. That God has stepped into our history. *“For God so loved the world that he gave his only begotten Son, so that whoever believes in him, will not perish, but will have eternal life”* John 3:16

The Christian message is that we are selfish when we are out of relationship with our Creator. That we need to hear again what he says about us and what he has done for us. Someone can look at a cake and describe what the ingredients are, the method used to bake it, but only the baker can say *why* they baked it. Maybe God is just waiting for each of us to ask him that question, and to hear his answer. This would liberate us from trying to carve out our own meaning, and instead can live our lives open to beauty, wonder and grace. We all need hope, meaning and purpose in our lives. Even more importantly, we need to know how much we are loved.

May God save us from ourselves and may we rediscover the ancient and true roots of our society, so we can have hope for our future.

Matt Boyes  
*Rector of Bentley, Binsted and Froyle*

# PRAYER WEEK



## God With Us



Prayer week is one of our favourite weeks of the year. Our home groups put together some amazing prayer stations designed to help you engage in prayer whether for the first time or if you've been talking with God for your whole life.

This year our theme is GOD WITH US and our prayer stations will be planned with that in mind. Perhaps you will be drawn to praying for God to meet with you and your loved ones, or maybe to intervene in situations across the world.

Even if you would like to use this space for quiet contemplation, you are so welcome.

We are excited to see what our home groups come up with - they are always so creative - and we can't wait to welcome you to join us in a week of prayer.

We do ask if you are planning to join in, that you sign up for your time slots using the QR code below. Sign up for as many hour slots as you like through the week.

**Sunday 17<sup>th</sup> May - Sunday 24<sup>th</sup> May**

**Bentley Church Hall**

**6am - 8pm daily**

**Book your slot here:**

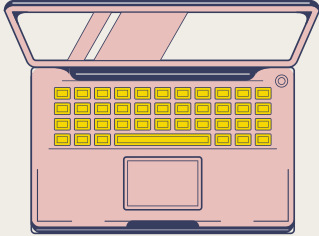


**<https://signup.24-7prayer.com/signup/649473>**



# Work from home

at Bentley Church Hall



Come along to our 'working from home' sessions at Bentley Church Hall. We have structured days with quiet times for focussed work through the day and the opportunity for a social lunch to beat the loneliness, share ideas, and cheer each other on.

Come any time between 9am - 5pm to suit you.

Don't worry if you need to take calls or sit in a meeting - we have a separate space set up so you won't disturb the others!

9am - 5pm

Dates:  
12th May  
26th May

Bentley Church  
Hall  
Church Lane  
GU10 5NA

FREE lunch

Structured but flexible  
work days

Tea & coffee

WI-FI

chat to Becky or Gemma  
or email [admin@benbinfro.org](mailto:admin@benbinfro.org) for more info

# Meet the Team

*Jonathan Bourne*



*Pictured: Jonathan Bourne*

## 1. Quick-fire questions!

**Tea or coffee?** Tea, but made properly!

**Winter or summer?** Summer

**Sunrise or sunset?** Sunset

**Sweet or savoury?** Savoury

**Apple or android?** Apple

**Air guitar or air drums?** Drums

**Movies or books?** Movies

## 2. What's your favourite way to start the day?

Prayer time with a refreshing shower!

## 3. Tell us more about your role at Benbifro and how you ended up here?

I had never heard of Binsted until five years ago, when just the right house became available in answer to prayer, whilst looking in the region between Winchester and Farnham. It is a privilege and a joy to be part of, and serving, this community including the wider area of what will soon become the parish of Hampshire Wey Churches.

For the past two years I have been a Churchwarden at The Church of the Holy Cross, Binsted. Churchwardens are widely regarded as holding the oldest continuously elected position in England, with roots that predate the establishment of Parliament. The role is documented as existing in the 13th century, with formal elections becoming established by the 14th century.

In The Church of England today, Churchwardens are the senior lay representatives of the parish acting as a representative of the bishop, a guardian of church property, and a leader in the parish. The role of the churchwarden is extremely varied but generally involves management, maintenance and mission in accordance with the Churchwardens Measure 2001 and the Canons of the Church of England.

## 4. What things in your role do you look forward to the most?

When lots of people come to one of the many special services that we have over the course of a year. Holy Cross Church has stood on this hill in Binsted for some 900 years, at the centre of the community for friendship, prayer and loving service to one another. An example was the VE 80 Remembrance event last year, when representatives from each of the armed services attended, as well as the Royal British Legion and many people from the village. We have a wonderful team of volunteers who contribute so well to making the Church a welcoming place where friendships are

made, whether bell ringing, flower arranging, maintaining the churchyard and building, playing music, researching history or verging at weddings and funerals.

**5. Outside of parish life, what things do you get nerdy or excited about?** I like riding tractors, messing about on boats and playing golf. I count walking my dog Freddy as part of parish life, but we do like going on expeditions further afield!

**6. What's your most embarrassing moment?** It was probably when I slid into the back of another car one icy morning, whilst driving to work when I lived in Derbyshire. This was over forty years ago now, but I sure learnt to be more careful and always pay proper attention on the road.

**7. If you could invent one thing to make your life better, what would you invent and why?** A cheaper and more efficient way to harness natural energy resources (solar, wind etc) so that we can all be more prosperous. We need to preserve oil, gas and minerals for chemical use to make all the materials that we need to support modern society.

**8. To finish, what is your go-to bible verse when you need some encouragement, and how can it help encourage others?** I like verses from Phillipians 4:4-9 about joy and peace, and have often referred to them to help any member of my family who may have been feeling anxious. For more on pursuing peace see <https://www.youtube.com/watch?v=lw1EtG7vOzM> – a short video series by David Ingall, an ordained Minister.

However, if I had to pick one verse it would probably be 2 Corinthians 13:v14 as it is a well-known Trinitarian blessing that I always find uplifting: *May the grace of the Lord Jesus Christ, the love of God, and the fellowship of the Holy Spirit be with us all evermore. Amen.*





# The Bereavement Journey

A 7 week course for anyone who has suffered bereavement, no matter how long ago.

This course provides a safe place to talk with others, as we reflect on the various ways in which our lives are impacted by loss, whilst also exploring how we can move forward, despite our loss.

A light lunch will be provided and all are welcome.

**Thursdays, 12:30pm - 2:30pm**  
**Commencing on Thursday 7th May**

**Mill Court, GU34 4JF**

(please contact - see below - for directions if you are unsure where to go)

Please let us know if you would like to join us:

**Email: [admin@benbinfro.org](mailto:admin@benbinfro.org)**

**Call: Fran - 07709 569262**

**Call: Kathy - 07710 623784**



# Mental Health Awareness Week

11th – 17th May 2026

At all levels, the Church can be ‘a voice for the voiceless’, helping to reduce the stigma often associated with peoples' mental health. From 11–17 May, we observe Mental Health Awareness Week. This year's theme, **Action**, invites us to look beyond words and focus on how we truly show up for one another.

The Church has a ready-made network of communities, buildings and pastoral contacts that can be utilised in helping to design and deliver appropriate and accessible services in collaboration with local communities.

If you're feeling overwhelmed, please know you don't have to carry it alone; reach out to us, a trusted friend, or see below a list of services and organisations who offer specialist help.

If you are worried about someone, please speak up and be a voice for the voiceless. Again, the organisations below can offer support.

A prayer:

*When we feel isolated and lonely  
God of faithfulness, be our companion.  
When intrusive thoughts disturb and overwhelm  
God of peace, quieten our minds.  
When we feel distraught and struggle to face the day  
God of eternity, be our light.  
When self-doubt and shame feel overwhelming  
God of hope, sustain us.  
When we constantly crave to be more  
God of truth, help us accept we are enough.  
Loving, life-giving, life-transforming  
God You are our Rock, our Refuge and Salvation.*

*Amen*

## Immediate & Crisis Support (24/7)

- **Emergency:** Call **999** or go to A&E if you are in immediate danger.
- **Samaritans:** Call **116 123** for free, confidential, 24/7 support.
- **Shout:** Text "SHOUT" to **85258** for 24/7 text support.
- **NHS:** Call **111** for urgent mental health advice.
- **Papyrus HOPELINEUK:** For people under 35 experiencing suicidal thoughts (9 am – midnight): **0800 068 4141**.

## NHS Mental Health Services

- **NHS Talking Therapies:** Access help for anxiety and depression by searching online or asking a GP for a referral.
- **Local NHS Urgent Care:** Crisis teams and psychiatric services can be accessed through **111**.

## Support Charities & Helplines

- **Mind Infoline:** Information on types of mental health problems, local Mind branches, and advocacy: **0300 123 3393**.
- **Hub of Hope:** A database to find local, national, and community-based mental health support.
- **Rethink Mental Illness:** Advice on mental health problems and services: **0808 801 0525**.

- **SANEline:** Specialist emotional support, information, and helpline: **0300 304 7000** (4:30 pm – 10:30 pm).

## Specialist Support Services

- **YoungMinds:** Support for young people (under 18) and parents/carers: **0808 802 5544**.
- **Childline:** For children and young people under 19: **0800 1111**.
- **PANDAS Foundation:** Support for perinatal mental health (prenatal/postnatal depression): **0843 28 98 401**.
- **Refuge National Domestic Abuse Helpline:** **0808 2000 247**.
- **Campaign Against Living Miserably (CALM):** Provides a helpline, online and WhatsApp chat, as well as information and support, for anyone affected by suicide or suicidal thoughts. Call: **0800 58 58 58** or visit [thecalzone.net](http://thecalzone.net)
- **Beat:** Offers information and advice on eating disorders, and runs a supportive online community. Call: **0808 801 0677** (England) or visit [beateatingdisorders.org.uk](http://beateatingdisorders.org.uk)

# ACTION

FOR YOURSELF.  
FOR SOMEONE ELSE.  
FOR ALL OF US.



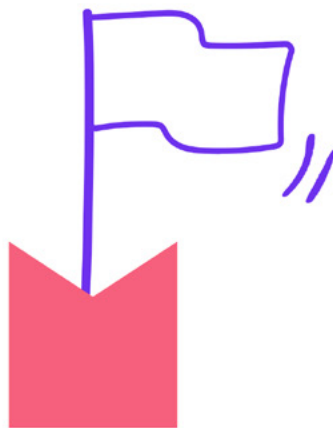
MENTAL  
HEALTH  
AWARENESS  
WEEK  
11-17 MAY 2026

## Our top ten actions to support good mental health

These simple actions may help lift your mood and improve your ability to cope with life. Try a couple and find which works best for you.

### 1. PLAN SOMETHING TO LOOK FORWARD TO

Making plans for things we enjoy can increase our sense of hope, which is important for our mental health. It could be a plan to sit down with a cup of tea and take a quiet five minutes, or a long-term plan for an ambitious trip. Whether it's a big or small goal, the important thing is to plan it.



### 2. EAT WELL

One of the simplest ways to improve mental health is by eating a healthy, balanced diet. Not only can it support your emotional health, but introducing small habits, such as staying hydrated or having fruit snacks, can help make changes stick easier.

### 3. GET CLOSER TO NATURE

Spending time in nature can boost your mood, lessen stress, and help you concentrate.



### 4. GET GOOD SLEEP

Good quality sleep helps your brain work better, lifts your mood, and is good for your overall health.



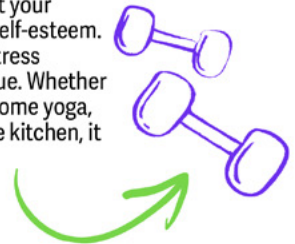
### 5. GET CREATIVE

Spending time on creative activities is a great way to help ease stress and anxiety. Carve out some time to listen to music, paint, sing, or do whatever you enjoy most.



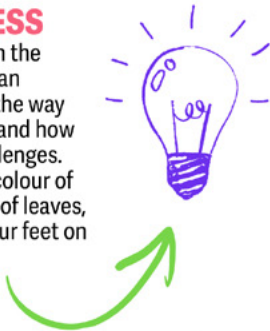
### 6. MOVE REGULARLY

Being active can boost your mood and raise your self-esteem. It's also an effective stress management technique. Whether you go for a walk, do some yoga, or vigorously clean the kitchen, it all counts.



### 7. TRY MINDFULNESS

Being fully aware in the present moment can positively change the way you feel about life and how you approach challenges. Aim to notice the colour of the sky, the sound of leaves, or the feeling of your feet on the ground.



### 8. MAKE TIME FOR FRIENDS

Having good relationships with others can help you feel like you belong, allow you to share experiences, and receive emotional support. It's a great reason to have a catch-up with a friend on the phone.



### 9. BE KIND

Bad days happen to everyone. If you're having a tough time, remember to treat yourself with kindness and understanding. You're doing the best you can.



### 10. TALK THINGS OVER WITH SOMEONE YOU TRUST

It can take a lot of courage to tell someone else how we're feeling or what we're finding hard. Just talking things through with a person we trust can feel like a relief and make us feel less alone.



Everyone deserves good mental health.  
For more tips and information visit [mentalhealth.org.uk](https://www.mentalhealth.org.uk)



# UPAGEAR

## Youth group

School years 7+

A welcoming and fun space for young people to gather, to build friendships, and explore Christian faith and values with significant snacks!

Thursday 7th May – 6–7:30pm

Thursday 21st May – 6–7:30pm  
(please note the time change for this term!)

Bentley Church Hall

[admin@benbinfro.org](mailto:admin@benbinfro.org)

# four: twelve

YOUTH CLUB



**WHO?** OPEN TO YOUNG PEOPLE IN SCHOOL YEARS 4–6.

**WHEN?** FRIDAY 1ST MAY – 5–6:30PM  
FRIDAY 15TH MAY – 5–6:30PM

**WHERE?** BENTLEY CHURCH HALL

**WHAT?** FUN & GAMES, SHORT BIBLE TEACHING, GROUP ACTIVITIES, TUCK SHOP.

[admin@benbinfro.org](mailto:admin@benbinfro.org)

**FREE**



**Sunday 17th May**

**Wickham Institute, Binsted**

**GU34 4NX**

**4-6pm**

**Supper included**



Messy Church is a brilliant afternoon of fun, crafts, games, messy play, singing and stories. The whole family are invited and there is something for everyone. We'd love to meet you!

**This month we are learning about the 'Rogation Walk'. This is a tradition where you walk around the parish and pray for the land and the community. Come along for some outdoor fun!**

It's free and a hot supper is included (even for the grown-ups!)



## Children's Church in May



A friendly and fun group for children during our Sunday services. With stories, games, songs, and crafts, children learn about God in a way that's easy to understand and enjoy. All ages are welcome – come and join us!

**3rd May**

9:30am Holy Cross, Binsted

**10th May**

9:30am St Mary's, Bentley

**24th May**

9:30am St Mary's, Bentley



# 2nd Bentley Scout Group

# JUMBLE SALE

*Come & get your bargains!!*



**Contributions for the sale can be delivered to the Scout Hut on Friday 15th 7pm-8:30 pm or by 12noon on the day.**

**SATURDAY**  
**16th May**  
**2026!**

**Doors open at 2pm**  
**£1.00 Entry**  
**Scout Hut**  
**GU10 5JP**



*Binsted Fete*



# THE BINSTED FETE WILL GO AHEAD ON JULY 11<sup>TH</sup> THIS YEAR.

Hopefully all the usual favourites will be there, but as always, we would really welcome some volunteers to help run stalls and help out where they can.

If you are able to help out or have any queries, please respond by email to [thebinstedfete@gmail.com](mailto:thebinstedfete@gmail.com)

20<sup>th</sup> – 22<sup>nd</sup> March

# A Weekend Away at Horsley Towers: Encountering God in Beauty and Community

**From Friday 20<sup>th</sup> March to Sunday 22<sup>nd</sup> March over 50 people from the congregations of Bentley, Binsted, Froyle, and Kingsley with Oakhanger spent time together in East Horsley in the Surrey countryside. Horsley Towers, a striking 19th-century mansion in the heart of the North Downs, was an ideal place for a church weekend away.**

Once home to Ada Lovelace, often regarded as one of the first computer programmers, today the estate has been transformed into a hotel and conference venue where several other big churches from around the country were doing the same as we were.

## Space to Gather

From the moment people arrived, there was a sense of excitement, especially from some of the children. The rhythm of the weekend quickly took shape: shared meals, times of worship, teaching sessions, and unhurried moments together. There was wonderful music led by LJ and Reuben Lucas and Andrew Hunter Johnston. Removed from daily distractions, we found space to listen—both to God and to one another.

## Teaching with Emmy Wilson

At the heart of the weekend was the teaching from our guest speaker Emmy Wilson. Before stepping into full-time ministry, Emmy trained and worked as a nurse, including caring for patients affected by HIV and AIDS—an experience that deeply shaped her compassion and calling toward those on the margins of society.

Her journey into ministry began in the 1980s, where she became involved in outreach to people facing addiction, homelessness, and exploitation. This early work laid the foundation for what would become one of her most significant contributions: pioneering the Alpha course within prisons where she met Matt Boyes. Inspired by what she witnessed overseas, Emmy helped establish prison Alpha programmes that have since spread globally, reaching tens of thousands of participants each year.

This background gave a particular depth to her teaching over the weekend. Her message carried a consistent thread: that no one is beyond the reach of God's grace, and that the Church is called to be a place of freedom and restoration.

Her many anecdotes invited the group into themes of freedom, hope, and the transforming power of the Holy Spirit. Drawing on her experience in prison ministry, she spoke about what it means to be spiritually “set free”—in dramatic moments but also in the slow, faithful work of surrendering to God over time.

Emmy also has a long-standing involvement in prayer ministry and teaching people to listen to God's voice. This was evident throughout the weekend, as she gently guided times of reflection and listening prayer, encouraging people not just to hear teaching, but to encounter God personally.

## Community and Connection

One of the most meaningful aspects of the weekend was the strengthening of relationships. Over meals, walks around



## Leaving Changed

As the weekend came to a close, there was a shared sense that something significant had taken place. Not necessarily in dramatic or outward ways, but in quiet shifts of perspective, renewed faith, and strengthened community.

Our church weekend away was an opportunity to encounter God, to grow together, and to return home with a deeper sense of purpose and connection.

We are very grateful to all those who helped organised the weekend and those who attended and made it so special.

the grounds, and conversations in the bar, friendships deepened. Libby May led a walk around the Downs which naturally evolved into a Prayer Ministry walk.

The children had their own activities, led by Gemma Ball; they loved spending time with each other and with their church family.

The evening entertainment on Saturday was launched with Steve Fice leading Sing-a-long-a Moses with 'Let My People Go'. We then had great fun in teams with our own version of Richard Osman's House of Games, but with a biblical theme.

For some, it was a chance to reconnect; for others, an opportunity to feel part of the church family for the first time. Many of us knew one other already but we came away knowing each other better.



# Saturday Café



**Bentley Memorial Hall**

**Saturdays 10.30am – 12.30pm**


**Coffee, tea and cakes**



We look forward to seeing you for a catch up and lively chat.



On most Saturdays. Look out for the banner outside the Hall.



**EVEN THE DARKEST NIGHT WILL END  
AND THE SUN WILL RISE**

Victor Hugo



## **BINSTED COFFEE SHOP**

**@ THE WICKHAM INSTITUTE**

(Church Street, Binsted GU34 4NX)



**WEDNESDAYS 10am – 12noon (during term-time)**

**PLEASE COME ALONG AND JOIN US  
COFFEE, TEA and HOME-MADE CAKES**

**ALL WELCOME**

(CHILDRENS' TOYS AVAILABLE)



**FREE WI-FI**





**SATURDAY  
18 JULY 2026**

# ***Bentley Flower & Produce Show***

**At last year's Flower & Produce Show, there was a record number of entries across a wide range of flowers, fruit, vegetables, home baking, chutneys, jams and drinks as well as lots of children's entries.**

For 2026, the committee have added a new category - Arts & Crafts – which will incorporate Photography, Handicraft and Artwork. There will also be a new 'Scarecrow' competition which will be open to any Individual, Family or Group. All of this is designed to give even more opportunity for as many new entries as possible.

We are also delighted to announce that our 'online entry' registration time will be extended to 20:00hrs on Friday 17<sup>th</sup> July and there will be an 'Early' registration available at the Saturday Café in the Memorial Hall on the 11<sup>th</sup> of July 10:00-12:30.

Details and entry instructions will be available in a 'Schedule' **which will be delivered with the June issue of the parish magazine, when the website will also be open for live registration at [www.bentleyfete.co.uk](http://www.bentleyfete.co.uk).**

As usual, it's free to enter and we are grateful for our sponsors including Carl Wilson from Castle Street Flowers, the Saturday Café and Apsley Farms. So, if you have a favourite flower in your garden, grow vegetables, enjoy baking or have an interesting 'Arts & Crafts' project you would like to submit, why not give it a go?

At the heart of the Flower and Produce Shows' success is your participation; the committee hopes even more people will join in the 2026 show.

The show is for everyone and fun for all, so we look forward to your entries!

*The Flower & Produce Show  
Committee*

# Sudoku Games

## Sudoku game EASY

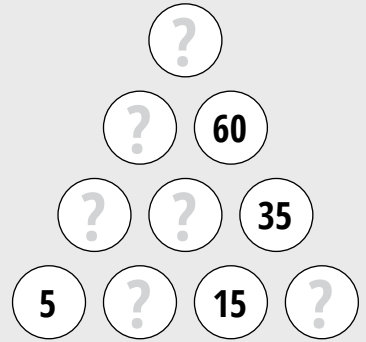
3		2					8	9
	6	8		5	2	7	3	4
		9						
4					7			
	8	3	2		1	5	9	
			5					2
						2		
2	1	4	7	8		3	5	
5	3					9		8

All you need to do is to fill in all of the squares in the puzzle so that each column of 9, each row of 9 and each 3 x 3 square includes every number from 1-9.

**No prizes** – just a huge amount of satisfaction!

### Number Pyramid

What are the missing numbers?



## Sudoku game MEDIUM

	3	5	6	7				
4			8	2	9	5		
	8				3		6	
	2				5	8		7
8			2		6			5
3		1	7				2	
	4		9				7	
		2	4	8	7			6
				5	2	4	9	

## Sudoku game HARD

5			8			2		
		7	5		2	8		1
		2	9				4	
	2	4				3		8
			3	2	4			
3		6				4	7	
	9				6	7		
7		3	2		8	9		
	6			9				5

Sudoku game answers shall be in the next edition of the Bentley & Binsted Parish Magazine



## THE WICKHAM INSTITUTE (VILLAGE HALL), BINSTED

[www.wickhaminstitute.co.uk](http://www.wickhaminstitute.co.uk)



### ***The Wickham Institute 100+ Club***

As promised, listed below are the lucky winners of the April 2026 draws:

#### April 2026

1<sup>st</sup> prize Mark Weldon

2<sup>nd</sup> prize Tammy Yates

3<sup>rd</sup> prize Kathy Ogilvie Thompson

Details of the May 2026 draw will appear in the next magazine.

Remember each number only costs £12 (£1 per month) and you have three chances to win each month!

50% of the monthly purchase price of each number goes in prizes and 50% to the running costs of The Wickham Institute. The more people that participate in the 100+ club, the more money that is paid out in monthly prizes.

If you would like to participate an application form can be obtained from Andrew Croom-Johnson on 01420 23157 or email a request to Andrew at [treasurer@wickhaminstitute.co.uk](mailto:treasurer@wickhaminstitute.co.uk)



# NEED A SCHOOL PLACE FOR SEPT 2026?

## Binsted CE Primary School

**Limited spaces available for Year R in  
September 2026**

We would be delighted to arrange a tour of our lovely village school, where our community feels like family. We are a small rural primary school with small class sizes and strong Christian ethos, based on our school values of Faith, Hope and Love.

 **Location** Binsted CE Primary School, Church Street, Binsted GU34 4NX

Contact the school office on  
01420 23200 or  
[adminoffice@binsted.hants.sch.uk](mailto:adminoffice@binsted.hants.sch.uk)  
to book your place!

We look forward to meeting you  
soon!





## School News - Binsted CE Primary

At Binsted we believe in the Christian values of Faith, Hope & Love.

We hope you had a wonderful Easter break. It is back to school for us for the start of the summer term. This term is always a lovely one with such a lot of exciting things planned. We are starting the term with a whole school food day, where we will be learning about healthy eating and how all our senses play a part in how we taste food.

Year 6 are busy working towards their SATS in May, and we have a fabulous rewards day planned for them all at Alton Sports Centre to celebrate their hard work. We have trips to Alice Holt and Blacknest Fields, a trip to a local farm and to the FAST museum in Farnborough. We have the excitement of Sports Day, Beech Class Sleepover, the wonderful KS2 play and all the fun of the leavers antics to look forward to as well.

We are also looking forward to welcoming new families to the Binsted team as we welcome our new starters for Year R in September. If you have a child who is starting school next year and are still undecided for September, please call the office at Binsted and arrange to come and visit our lovely village school. I would love to give you a tour and answer any questions you may have.

Best regards,

**Henry Jennings**

*Headteacher*

**ST MARY'S CHURCH, FROYLE  
INVITE YOU TO A.....**

**SEA SHANTY EVENING  
WITH THE  
KINGSPOND SEA SHANTY MEN**

**FRIDAY 8<sup>TH</sup> MAY - 7 PM**



Enjoy a rollocking good musical evening in the Church  
with wine and seaside refreshments in the interval.

**Suggested donation £15 per person  
(under 12's free)**

**FOR CATERING PURPOSES  
Please let us know if you plan to come  
by either:**

Emailing: Karen Potter ([kwilson2525@btinternet.com](mailto:kwilson2525@btinternet.com))

Or

Calling: Linda Bulpitt 01420 22725



# March 2026

WEATHER STATISTICS



## Temperature



### Daytime maximum

19.7°C (31<sup>st</sup>) to 9.1°C (7<sup>th</sup>)

10 days above 15°C and only 3 days below 10°C



### Nighttime minimum

- 4.1°C (22<sup>nd</sup>) to 7.2°C (8<sup>th</sup>)

12 nights below 0°C

## Rainfall



### Total for month

1.72 inches (43.6 mm) over 18 days



### Wettest days

0.48 inches (12.2 mm) (6<sup>th</sup>)

## Wind



### Dominant wind direction

West South West



### Maximum gust

27 mph (12<sup>th</sup>)

*Parish Weatherman*



## Events For Your Diary

# Binsted Parish Council

### May Bank Holiday Socials at Blacknest Fields

#### **Friday 1st May, 10:00-12:00, May Day Social ('Bringing in the May' & Pub Lunch)**

Celebrate May Day at Blacknest Fields by joining our free workshop at the Fields to make yourself a May flower garland to decorate your front door. To welcome the start of warmer days, we will be 'bringing in the May' - as was done traditionally in May Day celebrations - by gathering greenery and making decorative garlands and 'May flower-baskets'. Some of us are booked for a pub lunch at 'The Barn Owl' afterwards. Anyone who would like to join us for that is very welcome.

#### **Mon 4th May, 06:00 start, Dawn Chorus Day Walk & Breakfast at The Fields**

Join us to celebrate the Dawn Chorus, which peaks in early May. We are delighted that the very knowledgeable Chris Piper has agreed to lead a short walk into Alice Holt 'Lodge Inclosure'. Chris regularly undertakes bird and moth surveys at Gilbert White's House and for the Selborne Landscape partnership. After the walk, we'll return to the Fields to cook up a little breakfast in our Field Shelter. There is no charge for the walk or breakfast - but no dogs please.

People of all ages are welcome at these two free events.

But please email

[BNF@binstedparishcouncil.org.uk](mailto:BNF@binstedparishcouncil.org.uk)

if you plan like to join, so we know numbers for catering purposes and we can confirm parking arrangements to you.



# **Binsted's Annual Parish Meeting**

Wednesday 22 May

7pm, At The Wickham Institute, Binsted

The Annual Parish Meeting is an opportunity to find out about what's going on across the Parish, the year just gone, plans for the future and to have your say on current issues and the things you'd like the Parish Council to prioritise in the year ahead.

It's a well-attended event and we try to make the evening a relaxed, lively and informative one with guest speakers and with refreshments provided.

This year our guest speaker is Giles Porter, a local farmer who will be providing an insight on what it is like to run a farming business in Hampshire in today's world. Whilst many of us live in a rural setting, less of us understand the reality of farming and what the day in a life of a farmer looks like- we think you'll find the talk an interesting and informative one.

**Do come along! Refreshments will be served from 7pm**

**Anyone new to The Wickham Institute will find it opposite Binsted church.**



# BENTLEY GREEN: A NEW CHAPTER FOR THE OLD REC

Many people in the village will know the Old Recreation Ground - or “Old Rec” as it’s often called. For years it was the village cricket pitch, then parking for the construction of the A31. In more recent history it’s been rented for grazing. Now it’s going to begin a new lease of life.

What began as a conversation between a few local residents has grown into a shared ambition: to create a welcoming, natural green space that the whole community can enjoy. A place for people, wildlife, and future generations; shaped by the village, for the village.



## FROM IDEA TO COMMUNITY MOVEMENT

The idea was simple. Could we bring the Old Rec back into meaningful use as a community space?

Rather than developing a plan in isolation, the priority from the outset was to involve as many people as possible. Over recent months, residents have been invited to share their thoughts through a community survey, helping to shape what the space could become.

Alongside this, several wildlife surveys and a Preliminary Ecological Appraisal (PEA) were carried out to better understand the existing habitat and how any future plans could support and enhance nature conservation.

The response has been incredibly encouraging. There is a clear appetite within the village for a space that balances access with nature. Somewhere to walk, learn, volunteer, and connect.

Following the consultation process and review of the findings, Bentley Parish Council has given its approval for the project to move forward.

This means we can now begin developing a longer-term plan for the site and start turning ideas into reality.



# INTRODUCING BENTLEY GREEN



As part of this new chapter, the community was also invited to help choose a new name for the site.

Through a poll of everyone who completed the consultation survey, the name Bentley Green was selected.

Bentley Green was the original name for the land dating back to before the 1860s when the site was first enclosed. Renaming the site restores a piece of the parish's heritage and connects the new space to its deep historical roots, while signalling a fresh start with a renewed purpose.

## A SHARED VISION

The vision for Bentley Green is to create a community orchard and nature space that evolves over time. This will include:



- A mixed orchard of fruit trees, with space to grow and expand
- Areas managed to encourage wildlife and biodiversity
- Accessible paths for walking and quiet enjoyment
- Opportunities for education, particularly with local schools and groups
- A place for volunteering, learning new skills, and bringing people together

Importantly, this is not about a fixed, finished project delivered in a few years. It is about creating a space that develops naturally, shaped by the community and the environment.

This is a community-led project, and its success depends on local involvement.

## HOW YOU CAN GET INVOLVED

There will be opportunities to:

- Join volunteer working groups
- Share skills or experience
- Help shape decisions as part of the steering group
- Support fundraising and future activities



If you would like to be involved, the first step is to join the mailing list, where updates, meeting invitations, and opportunities to take part will be shared.

You can sign up here: <http://eepurl.com/gyKLSX> or scan the QR Code.

**BENTLEY GREEN IS AT THE BEGINNING OF ITS JOURNEY.**

**WE LOOK FORWARD TO BUILDING IT TOGETHER.**





# Wild Service

(*Sorbus torminalis*)

A tree with an intriguing name, and there are a number of competing explanations. It should not be confused with the True Service *Sorbus domestica*. Some say it is derived from the Latin word for beer, which survives in Spanish as *cerveza* and Portuguese as *cerveja*. It's true the fruit juice was added to alcoholic drinks to improve the flavour. On the other hand we quite stubbornly stick to Old English names for our trees, so the word *syfre* is another possible origin.

A true springtime stunner, it's not so long ago that you could find wild-service fruit at a market. These days it's rare and hard to find but it's still a favourite with wildlife like the wood pigeon, whose gut softens its seeds for propagation.

This deciduous broadleaf tree can reach 25m when mature. The bark is brown and patterned with cracked, square plates, and the twigs are slender, shiny, grey-brown and straight. Leaf buds are rounded and green, like little peas, and form on short leaf stalks.

The flowers are creamy white and more showy than its relative the Rowan. The wild service tree is hermaphrodite, meaning both male and female reproductive parts are contained within each flower. They form in clusters in late spring to early summer, and are pollinated by insects.



Once pollinated, the flowers develop into green-brown oval fruits (sometimes called chequers, although to me they look more like freckles), 10–15 mm diameter and patterned with small, pale spots when mature in mid to late autumn. It can also propagate itself by suckers.

Not to be confused with FieldMaple (*Acer campestre*) as they have similarly shaped leaves, but those of the wild service tree are not as distinctly lobed. They are large, floppy and glossy, also a bit like Plane.

The fruit require 'bletting' (ie. decomposition) through freezing, or in the olden days by just hanging, to make them edible.

Although rare, it is often found in oak and ash woods and pockets of ancient woodland. It grows best in clay and lime-based soils. The wild service tree is an ancient-woodland indicator. If you spot it while you're out exploring, it could be a sign you're standing in a rare and special habitat.

The flowers provide pollen and nectar for insects, while the berries are eaten by birds. The leaves are eaten by caterpillars of the moths *Bucculatrix bechsteinella* and *Phyllonorycter mespilella*.

Chequers were still on sale around 100 years ago. They are said to taste like dates and were given to children as sweets. They can be made into an alcoholic drink, or used to flavour other alcoholic drinks, such as whisky. It is thought they influenced the naming of 'Chequers Inns', although it is unclear which came first – the name of the fruit or that of the inns.

John Clare wrote of Epping Forest:

*Though nuts have long been  
glean'd by many crews*

*Of shatter'd poor, who daily  
rambled there;*

*And squirrels claim'd the  
remnant as their dues;*

*Still to the woods, the hungry  
boys repair;*

*Brushing the long dead grass  
with anxious feet,*

*While round their heads the  
stirr'd boughs patter down*

*To seek the bramble's jet-fruit,  
lushy sweet –*

*Or climbing service-berries ripe  
and brown.*

**Ben Hamlin**

*Tree warden*

Binstedtrees@gmail.com

# BENTLEY MEMORIAL HALL



The perfect venue for celebrations, children's parties, meetings, exercise classes or exhibitions. The Hall is conveniently located in the centre of the village and has kitchen facilities and ample car parking.

Downstairs accommodates events for up to 100 people across two rooms. Upstairs accommodates events for up to 40 people and is ideal for meetings.

## Your Hall Needs You



We are always looking for new Trustees to help run the Memorial Hall. Without new blood, the existing Trustees will wither away with age and the Hall will die.

If you want the Hall to continue to be part of village life, please consider becoming a Trustee.

For more information, please contact [bentleymemorialhall@gmail.com](mailto:bentleymemorialhall@gmail.com).

## The Bentley Memorial Hall 100+ Club

The winners of the April draw of the Bentley Memorial Hall 100+ Club are:

1st Helen Curwen    2nd Ellen Saunders    3rd John & Linda Fuller

**Congratulations to the winners.**

We welcome new members to the 100+ Club. Each number costs £12 per year (£1 per month) and there are three prizes every month! 50% of membership fees go to the 100+ Club prize fund while the remaining 50% goes to the Memorial Hall to help with our running costs. The more people who join the 100+ Club, the more money paid out in monthly prizes.

To join the 100+ Club, please e-mail a request to [bentleymemorialhall@gmail.com](mailto:bentleymemorialhall@gmail.com).

**For room bookings and additional information about the Hall, please visit our website**

[www.bentleymemorialhall.org](http://www.bentleymemorialhall.org).



## Life Beyond the Classroom at Bentley Primary School

At Bentley Primary School we believe that learning does not stop at the classroom door. We are incredibly proud of the wide range of opportunities we offer our children to enrich their experiences, develop new skills and create lasting memories.

One of the things that makes our school particularly special is that we are fortunate enough to have two school minibuses. This allows our pupils to regularly get out into the wider world and bring their learning to life. Our trips range from outdoor adventures at Hogmoor to educational visits such as Pizza Express, where children can learn about food and cooking. We have also enjoyed exciting trips further afield, including Marwell Zoo and even Legoland. Having our own minibuses also means we can keep the cost of trips as low as possible for families, as hiring coaches can significantly increase the price for parents. These experiences help children connect their classroom learning with the real world while having lots of fun along the way.

Back at school, we offer a fantastic range of after-school clubs for all year groups, from Year R through to Year 6. There really is something for everyone. Pupils can explore their interests through clubs such as Magic Club, Science Club and

Art Club, or take part in one of our many sporting activities. These clubs provide a wonderful opportunity for children to discover new passions, build confidence and spend time with friends.

We are also pleased to support busy families through our extended wraparound care. Our provision runs from 7.45am until 6.00pm each day, offering both a breakfast club and an after-school club. Children enjoy a variety of food and activities in a safe and welcoming environment, and our prices are very reasonable to ensure the service is accessible for families.

At Bentley Primary School we are committed to providing opportunities that help every child thrive, both inside and outside the classroom. We are incredibly proud of the welcoming community we have built and the many experiences our pupils enjoy throughout the school year.

# DOLLS HOUSE DAY

## AT THE ALTON ASSEMBLY ROOMS

**SATURDAY 27 JUNE 2026**

**This year's Dolls House Day will be supporting Dementia-friendly Alton in the Alton Assembly Rooms. There will be dolls houses large and small for children to play with along with various activities for them to enjoy. Dementia-friendly Alton will be offering handmade and pre-loved items for sale. We are pleased to announce Kennet Miniaturists will be joining us. In addition, there will be local exhibitors to support the day's activities. The café will be open for refreshments.**

The pre-loved dolls house items range is very popular with collectors of all ages at Dolls House Day. With stock now getting low if you have any pre-loved items relating to dolls houses and would be happy to donate them to Dementia-friendly Alton for this year's Dolls House Day in June please let us know using the contact details below.

All money raised at this event will be used to continue delivering a range of support sessions and services for people living with dementia and their carers. This event will be attractive to all those interested in dolls houses and accessories. For more information please contact Assembly Rooms 01420 551455 or email [dementia\\_friends@btinternet.com](mailto:dementia_friends@btinternet.com).

### **Event Details**

**Date/Time** Saturday 27 June 2026, from 10.00am until 4pm

**Location** Alton Assembly Rooms, High Street, Alton, Hampshire, GU34 1BA

**Admission** Free entry. Donations welcomed.

# Bentley & Binsted

PARISH MAGAZINE

**The parish magazine for Bentley & Binsted is distributed to all the houses in our two villages. Most of the costs for producing the magazine come from advertising revenues, last year we had a shortfall of over £3,000, which Bentley and Binsted PCCs need to cover.**

It costs us around £1 to produce each copy of the magazine and we publish 10 editions per year. If you feel that you are able to contribute towards the costs of producing the magazine, please contact the magazine treasurer at [bentleytreasurer@benbinfro.co.uk](mailto:bentleytreasurer@benbinfro.co.uk) or you can donate online by either:

- scanning the QR code below
- or go direct to our donations page at: <https://tinyurl.com/2tv9rtxu>.



Thank you for helping us keep the magazine as something for everyone in Bentley and Binsted.

# CURTIS MUSEUM

(01420 82802)

## OPENING TIMES

Tuesday to Saturday  
10am – 4.30pm

[www.hampshireculture.org.uk/curtis-museum](http://www.hampshireculture.org.uk/curtis-museum)

## CURTIS MUSEUM 2026

### May events.

#### Object of the Month: -

a beautiful punch bowl by studio potter Edgar Campden (1930-1998) of Aldermaston Pottery.

This monthly showcase continues throughout the year until the Allen Gallery reopens in 2027, presenting highlights from the Hampshire Cultural Trust's extensive ceramics collection in storage in Chilcomb, Winchester.

**HALF TERM HOLIDAY:** For the May half term there will be a range of drop-in crafts and colouring activities, including Thursday Craft Club, (drop in) plus a family museum trail and our seasonal Dodo Natural History trail.

Tuesday 25 May - Make & Take clay session 11 - 12, please pre-book online.

With support from the Museums Association Wellbeing Fund, Hampshire Cultural Trust is delighted to be delivering a programme of **creative workshops** to benefit young people across the county through 2026 and 2027. Sessions will be held during term times over 5 weeks on a Saturday morning; they are free but must be booked in advance, please visit <https://www.hampshireculture.org.uk/curtis-museum-events> for more details.

**May Talk** - Thursday 14th May.

**Nik Knight** - Hampshire Bats Group - will speak on "**Bats: Superheroes of the Night.**"

The talk will be preceded by the AGM of the Friends of the Museum - this never takes very long!

To be held in Room 7 of the Alton Community Centre, Amery Street, Alton GU34 1HN. Doors open 7pm for 7.30. FREE, donations welcomed.

## Sudoku April Answers

Sudoku EASY

3	8	7	5	2	1	9	6	4
5	4	2	6	3	9	1	7	8
9	1	6	4	8	7	5	2	3
7	6	8	1	4	5	2	3	9
2	3	1	9	7	8	4	5	6
4	9	5	3	6	2	7	8	1
6	2	9	8	5	4	3	1	7
1	7	3	2	9	6	8	4	5
8	5	4	7	1	3	6	9	2

Sudoku MEDIUM

5	8	4	9	1	2	6	3	7
9	2	1	6	7	3	4	5	8
6	7	3	5	4	8	9	2	1
2	9	6	1	3	4	7	8	5
3	1	5	7	8	9	2	4	6
8	4	7	2	6	5	1	9	3
7	5	9	8	2	6	3	1	4
1	3	2	4	5	7	8	6	9
4	6	8	3	9	1	5	7	2

Sudoku HARD

4	6	2	5	9	1	3	8	7
1	3	9	6	8	7	4	2	5
7	5	8	3	4	2	1	9	6
6	9	1	7	3	8	2	5	4
5	2	3	9	6	4	7	1	8
8	7	4	2	1	5	9	6	3
9	8	7	4	2	6	5	3	1
3	1	5	8	7	9	6	4	2
2	4	6	1	5	3	8	7	9

# Church Registers

## Bentley

Monday 16th March 2026

Funeral and burial of Peter Hurley

## Binsted

Wednesday 11th March 2026

Funeral of Sara-Jane Mayhew

## Time for Tennis or Croquet ?

Binsted Tennis and Croquet Club is based on Binsted recreation ground and open to all Parishioners of Binsted and the surrounding villages.

You can join either the Tennis part, the Croquet part or both.

Family Membership starts at £ 60 per year for Tennis, £ 45 for Croquet, no other fees to pay.

Online booking system makes booking the court very easy.



Visit [www.binstedtcc.co.uk](http://www.binstedtcc.co.uk) for more information

## Bring and Share Spring Lunch

*Sunday 24<sup>th</sup> May*

*Following on from our Ilam service*

*Wickham Institute, Binsted*

*All welcome.*

*Please just bring a cold sharing savoury or sweet dish for the number in your party and whatever you might like to drink. Visitors most welcome!*



# CHARLES READ

& DAUGHTER

INDEPENDENT FUNERAL DIRECTORS & MEMORIAL MASONS



24 HOUR PROFESSIONAL  
& PERSONAL SERVICE

PRIVATE CHAPELS OF REST

PRE PAID & PRE ARRANGED FUNERALS

01420 83551

[www.charlesreaddaughter.uk](http://www.charlesreaddaughter.uk)

11-13 Turk Street, Alton, Hampshire GU34 1AG



NAFD Member



Your home  
Your care  
Your choice



**a** **alina** **homecare**  
*Care at Home*

Don't let the winter lead to loneliness.

We're here to give keep your loved one company in their own home.

Our professional friendly carers provide award winning respectful and compassionate care.

Regular visits, overnight and  
Live-in care available.

Let's chat...

**01252 227222**  
[alinahomecare.com](http://alinahomecare.com)



**Top 20 UK  
Home Care  
Group Award  
2021 - 2025**

# Local Handyman for Hire



Available for all DIY and gardening needs

*Based in Locally*

Please call David on: **07931 422000**

For enquiries and any further information

## Jobs Include:

Plumbing

Carpentry

Decorating

TV, Picture and Mirror hanging

Wooden Floor laying

Gardening and Landscaping

Shed Building

Tip Runs (for garden waste)

Fence/ Gate repair

Gutter Clean and repair

Car repair (Brake replacement / Service)

## Why choose me?

- Friendly professional Service
- Careful tidy workmanship
- Local and Dependable
- Happy to help with one-off jobs or regular work

For any other jobs please enquire on **07931 422000**

**R. A. CROFT LTD**  
*Bespoke  
Building & Joinery*



*All Aspects of Building Work Undertaken*

**01420 521152**

Listed Buildings

Refurbishments

Extensions

General Maintenance

New Houses

Registered House Builder

*Unit 2F, Blacknest Industrial Park, Blacknest Road,*

*Alton, Hampshire GU34 4PX*

*Email: [info@racroftltd.co.uk](mailto:info@racroftltd.co.uk)*

# jb architects

We understand that changes to your home can be a daunting prospect. Our friendly approach aims to remove the technical jargon and work closely with you to achieve an ideal solution.

Architectural Designers based in Binsted and Emsworth.

- Design, Planning & Building Regulations
- Domestic & Commercial Properties
- New Builds, Extensions, Large & Small Alterations
- ARB & RIBA Registered

T: 07780 633 012

E: Sean@jb-architecturedesign.com

W: www.jb-architecturedesign.com



**ADVERTISE YOUR  
BUSINESS HERE**

**CONTACT US**

magazine@benbinfro.org

¿hablas  
español?

**Spanish GCSE  
Tuition**

Contact Juana  
juana.garcia@live.co.uk  
or 07957 695808

# Bentley Memorial Hall

The perfect venue for celebrations, weddings, children's parties, meetings, specialist classes or exhibitions.

Conveniently located in the centre of the village with kitchen facilities and ample car parking.

Main hall accommodating up to 100 people and two meeting rooms accommodating up to 60 people each. Main hall and one meeting room can be combined for larger events.

For more information and to book the hall, please go to the website [www.bentleymemorialhall.org](http://www.bentleymemorialhall.org)



Need a venue for a party  
or business meeting?

**Why not hire**

**Binsted Sports Pavilion?**

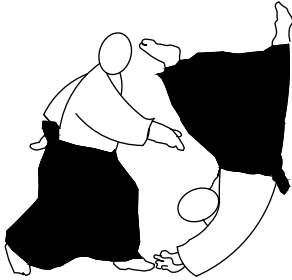
Available evenings, weekends  
and in office hours on Fridays

Located at Binsted Recreation Ground  
The hall has great views and free parking  
Cost is £50 for 4 hours  
Contact [clerk@binstedparishcouncil.org.uk](mailto:clerk@binstedparishcouncil.org.uk)  
to discuss your requirements





# KI AIKIDO



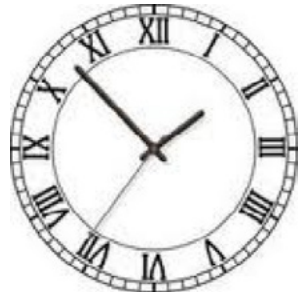
A TRADITIONAL JAPANESE MARTIAL ART

Using coordination of mind and body Ki Aikido teaches calmness, confidence and eliminates fear in everyday life

This powerful but non competitive art is suitable for everyone irrespective of age, sex or physical ability

Monday & Thursdays 7.30pm - 9.30pm  
Bentley Memorial Hall, Bentley, Nr ALTON

Enquiries: Email: [altonaikido@gmail.com](mailto:altonaikido@gmail.com)  
Mobile: 07717534643



M. W. SHAW – FARRINGDON

*Antique Clock Repairs  
& Restoration*

*House calls undertaken*

*All work guaranteed*

*Tel. Mr. M. W. Shaw*

*01420 588457*

## ADVERTISE YOUR BUSINESS HERE

### CONTACT US

[magazine@benbinfro.org](mailto:magazine@benbinfro.org)

**SMS: 07553 15 62 92**

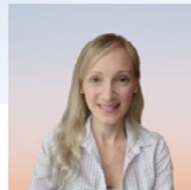
I'm an Accredited Counsellor and Chartered Psychologist offering support for individuals and couples.

**COUPLES COUNSELLING: £70 PER SESSION**

**INDIVIDUAL COUNSELLING: £60 PER SESSION**

**Bookings: [epsycho.com](http://epsycho.com)**

*Online or In-Person sessions (Kingsley)  
Dr Eliza Margrove MA PhD CPsychol MBACP*



# PAX HILL



# Care Home



Provides the highest level of care, stunning accommodation with beautiful views and excellent facilities.

There are four separate care environments, enabling residents to share their lives with those of similar needs.



01420 525882 | [www.paxhill.co.uk](http://www.paxhill.co.uk)  
Bentley, Farnham, Surrey GU10 5NG





## Your Local Bentley Agent

Appointing Anderson Jones means working directly with owners Adrian and Candice, who build genuine relationships to understand your property goals. Enjoy a personal, local service backed by cutting-edge technology, standout marketing, and full support.

Follow us on social media @AJPropertyUK

w: [andersonjones.co.uk](http://andersonjones.co.uk) | T: 01252 988488 | E: [hello@andersonjones.co.uk](mailto:hello@andersonjones.co.uk)



## THE WICKHAM INSTITUTE (Binsted Village Hall)



LOTTERY FUNDED

Having a party? Need a venue for a one-off meeting or conference?  
Looking for somewhere to hold a regular club/society meeting or class?

Why not consider hiring our lovely Grade II listed hall. It is light and airy, with a stage and a modern kitchen. The hall can seat up to 80 at tables or set up for conferences and meetings, and can accommodate up to 120 standing (Covid restrictions may apply).

We have very reasonable hire rates, why not contact us.



**For bookings or further information,  
please contact the booking secretary on  
01420 22388 or visit our website  
[www.wickhaminstitute.co.uk](http://www.wickhaminstitute.co.uk)**





**DOWNIE & GADBAN**

**Residential Conveyancing - Wills - Powers of Attorney - Probate - Commercial Property - Property Development - Dispute Resolution**

Instant conveyancing quotes available via our website  
[www.downieandgadban.co.uk](http://www.downieandgadban.co.uk)

We are here to help you.  
Call **01420 82879** or email us at  
**info@downieandgadban.co.uk**

**Why Choose Us?**

A traditional practice with a modern approach, putting its clients firmly at the heart of its business. We pride ourselves on a client-focused, solicitor-led service, ensuring that our clients get advice that is tailored to their individual needs, whether on routine residential property transactions or more complex and substantial matters. We have been serving generations of families in the Alton area since 1905.



**[www.downieandgadban.co.uk](http://www.downieandgadban.co.uk)**

**Rockbourne House, 100 High Street, Alton, Hampshire, GU34 1ER**

Welcome to **Mint Condition**  
Your Fitness Experts



- . Private Personal Training
- . Pilates Classes
- . Injury Rehabilitation

**Contact us today to start your journey..**

[www.mint-condition.com](http://www.mint-condition.com) | [gym@mint-condition.com](mailto:gym@mint-condition.com) | 01420 590590  
Mint Condition, Steyne Farm, Binsted, Hampshire, GU34 4NU

## Need help with your feet?

Professional foot treatments  
in your own home

- Nail cutting
- Callus & hard skin removal
- Corn removal
- Thickened nail reduction
- Fungal infections

**Call Lois on 07504 531901**

[onyourfeetfhp@outlook.com](mailto:onyourfeetfhp@outlook.com)

<https://onyourfeet.my.canva.site/on-your-feet>



MEMBER OF  
THE SMAE INSTITUTE

Lois Kape  
Foot Health  
Practitioner

DIP FH



 **on your feet**  
mobile foot care

  
**Belle Moor**  
REMOVALS & STORAGE  
Est. 1982

**We are a long established removal  
business, based near Alton.**

We can provide a package tailored to your exact requirements. Our service is professional and efficient, rivalling the larger companies on customer care and cost.

Free Quotations | House Clearance  
Packing Service | Secure, Dry Storage

Please call Adrian James at any time

**07703 683961**

Or email [adrian@bellemoor.co.uk](mailto:adrian@bellemoor.co.uk)

[www.bellemoor.co.uk](http://www.bellemoor.co.uk)

## Physiotherapy

In the centre of Bentley

by

**Pippa Blizzard**

Chartered Physiotherapist  
MCSP HCPC BAHT AACF

07714 239644

[physiotherapy@pippa-blizzard.co.uk](mailto:physiotherapy@pippa-blizzard.co.uk)

[www.pippa-blizzard.co.uk](http://www.pippa-blizzard.co.uk)



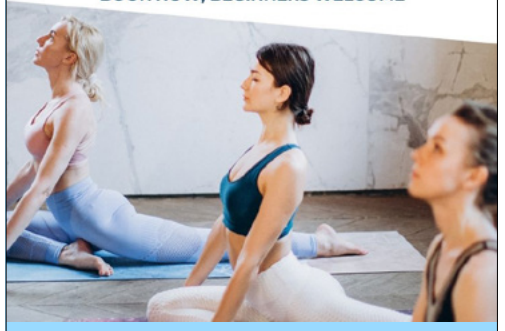
[WWW.JUANAGARCIAIYOGA.CO.UK](http://WWW.JUANAGARCIAIYOGA.CO.UK)

## NEW YOGA CLASS

Term Time Yoga

Wednesdays @ Bury Court 9.30 am

**FREE TASTER SESSION ON MARCH 11**  
**BOOK NOW, BEGINNERS WELCOME**





# ART CLASSES FARNHAM



## Educational & Skill-Building

Whether you're an **absolute beginner** looking to **learn to draw and paint**, or an **intermediate** aiming to refine your skills, our **10 week Art Course** is a great way to enhance creativity and boost brain power.



## Well-Being & Relaxation

A calming and mindful practice that promotes overall well-being.



## Social & Fun

Meet like-minded people and make new friends.



Tel: 07936 646597 | Email: [carrie@creativeartclasses.com](mailto:carrie@creativeartclasses.com)

[www.creativeartclasses.com](http://www.creativeartclasses.com)



## BEN MACDONALD ASSOCIATES

Chartered Architects & Surveyors

- Extensions
- Refurbishment
- One off Houses
- Farm Building Conversions
- Listed Building Alterations

Total design and management Service

Hoggatts House, Kingsley  
Bordon GU35 9NY  
Mob. 07511 994 062

email:

[benmacdonald\\_architect@hotmail.com](mailto:benmacdonald_architect@hotmail.com)

## THORNE & CO

## TAXATION CONSULTANTS

Friendly, efficient service to deal  
With your Accounts and  
Self-Assessment Returns

Initial Interview Free  
Evening appointments available

01420 22998

Email: [thornebentley@aol.com](mailto:thornebentley@aol.com)



## AWARD WINNING LOCAL TOILET HIRE

Perfect for weddings, fetes and sporting events

- Luxury Toilet Trailers
- Single Portable Loos
- Accessible WC's & Urinals
- Long Term Building Site Loos

01420 588 355  
 hello@loos.co.uk  
 www.loos.co.uk



Visit our showroom  
 Unit 5, Aylesfield  
 Froye Buildings,  
 Froye Road,  
 GU34 4BT



### Our services-

- Manual and Power Sweeping
- Log Burners & Open Fires
- Birdsnest Removal
- CCTV Inspections and Reports
- Cage, Cap & Cowl Supply & Fit
- Rayburns & Agas
- Ingle Nooks
- Stove Maintenance
- Hetas Accredited Stove Installation'

## T: 01420 549064

www.stubbyschimneysweeping.co.uk  
 www.stubbysstoveinstallations.co.uk  
 info@stubbyschimneysweeping.co.uk



## FENCING & GATES SUPPLIER

01420 521 040

SALES@CASHMOREFENCING.CO.UK



WE STOCK A LARGE RANGE OF PRODUCTS, INCLUDING :

- |                          |                         |
|--------------------------|-------------------------|
| ➤ FENCE PANELS           | ➤ PICKET FENCING        |
| ➤ CONCRETE PRODUCTS      | ➤ PEDESTRIAN SIDE GATES |
| ➤ CHESTNUT FENCING       | ➤ 5 BAR FIELD GATES     |
| ➤ AGRICULTURAL FENCING   | ➤ FIXTURES & FITTINGS   |
| ➤ TRADITIONAL CLOSEBOARD | ➤ TOOLS & EQUIPMENT     |

## NEXT DAY DELIVERY

ORDER ONLINE TODAY

WWW.MARTINCASHMORE.CO.UK



BEAUTIFUL MARQUEES  
FOR EVERY OCCASION

For more information call us or visit our website

Tel. 01420 488477

[www.FourSeasonsMarquees.co.uk](http://www.FourSeasonsMarquees.co.uk)

Jane Stockdale

## HOME COOKING

FOR SMALL OCCASIONS

Dinners, Luncheons, Buffets,  
Drinks Parties, Tea Parties,  
Children's Parties,

After Service Gatherings.  
Cooking for the freezer  
and individual dishes.

SPECIALISING IN  
CAKES AND CANAPES

**Please call 01252 723161  
or 07775696918**

[janestockdale01@hotmail.co.uk](mailto:janestockdale01@hotmail.co.uk)



## Food Affair Catering

Caterers for any occasion

Delicious food beautifully  
presented

Call Amanda on  
Tel: 0778 732 6982

Email: [foodaffair@hotmail.co.uk](mailto:foodaffair@hotmail.co.uk)

[www.food-affair.co.uk](http://www.food-affair.co.uk)

**ADVERTISE YOUR BUSINESS HERE**

**CONTACT US**

[magazine@benbinfro.org](mailto:magazine@benbinfro.org)

Imagine

# Dry Carpet Cleaning

*"no soggy carpets or wet dog smell in your home"*

- Spills & spots - gone
  - Smells & odours - removed
  - Deep cleans & lifts carpet pile - like new
- FREE spot & stain remover with every clean*

*I also clean:*

***Upholstery, Hard & Wooden Floors***



Locally based family run business,

Call us for FREE on

**0800 180 4046**

We have dry cleaned carpets & upholstery in 100's of homes

Get Main Room Cleaned  
**save 50%**  
on all further rooms  
+ Free Stain Guard

**zero dry time**

Dry Carpet, Upholstery & Hard Floor Cleaners

**ADVERTISE YOUR  
BUSINESS HERE**

**CONTACT US**

[magazine@benbinfro.org](mailto:magazine@benbinfro.org)

**ADVERTISE YOUR  
BUSINESS HERE**

**CONTACT US**

[magazine@benbinfro.org](mailto:magazine@benbinfro.org)

# JT GARDEN SERVICES

LAWN MOWING  
HEDGE CUTTING  
GARDEN MAINTENANCE  
LICENSED WASTE  
REMOVAL SERVICE  
BENTLEY

01420 22764  
07905297848

# Simon Sharpe

# S E Electrical

All electrical work carried out  
Including  
re-wiring, extra sockets, fault finding,  
lighting, *commercial, PAT Testing,*  
*Fixed Wire Testing*  
Electric Car Charge Sockets

34 years' experience  
*Contact Simon - 24 hour call out*

07720851398

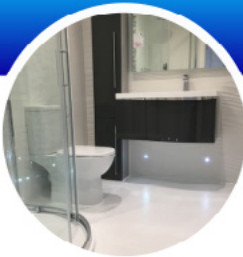
or

01420 477542

# aquamagic.plumbing

Your local plumbing & heating specialist

# 07795 295 293



- ★ Kitchens & bathrooms
- ★ Boiler installations
- ★ Unvented cylinders
- ★ Power flushing
- ★ Gas & oil
- ★ Underfloor heating



[www.aquamagic.plumbing](http://www.aquamagic.plumbing)



Plan your garden  
project with us early

Create your idyllic outdoor space with expert hard landscaping, driveways, patios, stone & brick walls, new lawns, drainage & full garden design projects.

Quality craftsmanship from a trusted local business.

SUPPORT  
*Local*  
BUSINESS

- Business established in 2012
- Member of Checkatrade since 2014
- £2m Public Liability insurance with AXA
- 5 year guarantee on workmanship
- Skilled & professional landscaping team
- Technical landscaping projects

 01428 606763 or 07798 811 941

 [www.1stadvancedlandscapes.co.uk](http://www.1stadvancedlandscapes.co.uk)

Whispers, Tower Road, Hindhead, GU26 6SL



## Andrew Wood

Heating and Plumbing Engineer



- BOILER CHANGES
- BOILER SERVICING
- POWER FLUSHING



- CENTRAL HEATING SYSTEMS
- GAS INSTALLATIONS
- GENERAL PLUMBING

Gas Safe No. 15316

For free estimates or advice telephone: **Bentley (01420) 22637**

## MICHAEL NEWSTEAD

Bathroom Installations • Small Plumbing Jobs • Plastering  
Tiling • Exterior and Interior Decorating

**30 Years' Experience**

Free quotations 07960 893369

michaelnewstead70@outlook.com

## *MJP Plumbing & Heating Ltd*

Helpful friendly plumber.

Will do all the jobs that need doing from a tap washer to refitting your bathroom.

Servicing to replacing boilers. **Just ask, no job too small!**

Works with all systems – heating and plumbing.

Gas Safe registered

Contact **Mike** on **07768 844276** or email *mike@mjpplumbing.com*

## Simons Decorating Services

Interior & Exterior Painting & Decorating, including Wallpaper, Kitchen Respray  
and Resin Timber Repairs

Over 30 years' experience & fully Insured

07747 002 595

simonsdecor@live.co.uk

www.simonsdecor.com

# R. A. CROFT JOINERY

*Bespoke  
Building & Joinery*



*We are proud to announce that we have now merged with  
Bentley Joinery*

- *Windows*
- *Bespoke Projects*
- *Staircase.*
- *Bespoke Furniture*
- *Doors*
- *Mouldings*

*Unit 2F, Blacknest Industrial Park, Blacknest Road, Alton,  
Hampshire GU34 4PX  
T: 01420 521152  
E: [info@racroftltd.co.uk](mailto:info@racroftltd.co.uk)*



HAMMERTONDESIGN

**Senior Marketing Design Capacity**

FOR REGULATED INDUSTRIES

[www.hammertondesign.co.uk](http://www.hammertondesign.co.uk)

## **BENTLEY**

**Website:** [www.bentleyparishcouncil.gov.uk](http://www.bentleyparishcouncil.gov.uk)

### **The Memorial Hall**

(Bentley Memorial Hall Association);  
Malcolm Macnaghten Tel. 01420 521291  
Email: [bentleymemorialhall@gmail.com](mailto:bentleymemorialhall@gmail.com)  
[www.bentleymemorialhall.org](http://www.bentleymemorialhall.org)

**Badminton Club:** Martin Fox 07710 035913  
[martin.fox62@yahoo.co.uk](mailto:martin.fox62@yahoo.co.uk)

### **District Council**

Phillip Davies  
Email [phillip.davies@easthants.gov.uk](mailto:phillip.davies@easthants.gov.uk)

### **Parish Council**

Chairman: Mr John Fuller 07768 558751  
[johnfuller@bentleyparishcouncil.gov.uk](mailto:johnfuller@bentleyparishcouncil.gov.uk)  
Clerk: Emma Wadey 07795 326539  
Email: [clerk@bentleyparishcouncil.gov.uk](mailto:clerk@bentleyparishcouncil.gov.uk)  
Facebook: [@bentleyparishcouncil](https://www.facebook.com/bentleyparishcouncil)  
Instagram: [@bentley\\_parish\\_council](https://www.instagram.com/bentley_parish_council)  
Bentley Memorial Hall, Hole Lane,  
Farnham GU10 5LP  
Parish Office Hours  
Monday to Thursday 9am to 3pm

### **Bentley School**

Headteacher: Vicky Hallett 01420 525010  
Email: [bentleyschoolptfa@gmail.com](mailto:bentleyschoolptfa@gmail.com)

### **Childcare**

Dottie Tots: Karen 07387 576 307

### **Fête Committee**

Chairman: Hugh Chissell, Greystones, Bentley  
01420 23117

### **Flower and Produce Show**

Contact: Pamela Green-Wright 07720 633 943

**Phoenix Group:** Linda Fuller 07891 825410  
email: [lindafuller1105@gmail.com](mailto:lindafuller1105@gmail.com)

### **Bentley Rec Ground**

Chair: Stephen Whowell  
[stephenhowell@bentleyparishcouncil.gov.uk](mailto:stephenhowell@bentleyparishcouncil.gov.uk)

### **Joint Parish Organisations**

**Care Group** (car service)  
Bookings: 07775 458873  
Secretary: 01420 590697

**Girl Guides** (at Holybourne)  
Lucy Yendell 01420 80560

### **2nd Bentley Scout Group General Enquiries:**

[admin@2ndbentleyscouts.org.uk](mailto:admin@2ndbentleyscouts.org.uk) 07974377736  
[www.2ndbentleyscouts.org.uk](http://www.2ndbentleyscouts.org.uk)

## **BINSTED**

**Website:** [binstedparishcouncil.com](http://binstedparishcouncil.com)

### **The Wickham Institute**

Chairman: Graham Jones 07825 201451  
email: [graham.jones666@gmail.com](mailto:graham.jones666@gmail.com)  
Bookings: Ann Mann 07854130955  
email: [annmann074@btinternet.com](mailto:annmann074@btinternet.com)  
[www.wickhaminstitute.co.uk](http://www.wickhaminstitute.co.uk)  
Treasurer: Andrew Croom Johnson - 23157

**County Councillor** Mark Kemp Gee - 01420  
563550, email - [marknkempgee@aol.com](mailto:marknkempgee@aol.com)

### **District Council**

David Ashcroft, 07966 511 868.  
Email [DavidAshcroft@easthants.gov.uk](mailto:DavidAshcroft@easthants.gov.uk),

### **Parish Council**

Chair: Dominic Hearne, 07886 581 906  
[d.hearne@binstedparishcouncil.org.uk](mailto:d.hearne@binstedparishcouncil.org.uk)  
Vice Chair: Jason Lock, 07500 898 387  
[jason@binstedparishcouncil.org.uk](mailto:jason@binstedparishcouncil.org.uk)  
Clerk Mike Mordecai  
Email: [clerk@binstedparishcouncil.org.uk](mailto:clerk@binstedparishcouncil.org.uk)  
Website: [Binstedparishcouncil.org.uk](http://Binstedparishcouncil.org.uk)  
Facebook: [@Binstedparishcouncil](https://www.facebook.com/Binstedparishcouncil)

### **Binsted School**

Headteacher: Henry Jennings 01420 23200

### **Fête and Flower Show**

Lisa Wright  
[thebinstedfete@gmail.com](mailto:thebinstedfete@gmail.com)

### **Tennis and Croquet Club Chairman:**

Secretary - Graham Jones 07825 201 451  
Website: [www.binstedtcc.co.uk](http://www.binstedtcc.co.uk)

### **Growmore Club Secretary:**

[binsted.growmore.secretary@gmail.com](mailto:binsted.growmore.secretary@gmail.com)

### **Bentley and Binsted Police**

Police Rural Beat Officer: Jess Hornsby  
Alton Police 101

### **Binsted Cricket Club**

Chairman: John Dineen 01420 617814  
or mob: 07747878392

### **Binsted Football Club**

Secretary: Tim Winkworth [binstedfootball@gmail.com](mailto:binstedfootball@gmail.com)

### **Friends of Binsted School (FOBS)**

[fobs.binsted@gmail.com](mailto:fobs.binsted@gmail.com)

# May Services

**3rd May** **9:30am** Binsted Holy Communion & Children's Church  
**6pm** Bentley Praise

**10th May** **8am** Binsted Holy Communion (BCP)  
**9:30am** Bentley Morning Worship & Children's Church (*followed by APCM*)  
**11am** Froyle Holy Communion  
**6pm** Kingsley Praise

**17th May** **9:30am** Froyle Morning Worship  
**11am** Kingsley Holy Communion  
**4pm** Messy Church at Binsted

**24th May** **9:30am** Bentley Holy Communion & Children's Church  
**11am** Binsted Morning Worship  
**6:30pm** Froyle Evensong

**31st May** **11am** Benefice service at Froyle

[www.benbinfro.co.uk](http://www.benbinfro.co.uk)  
[admin@benbinfro.org](mailto:admin@benbinfro.org)  
01420 23339

