

FEBRUARY 2026

# Bentley & Binsted

PARISH MAGAZINE

## FEATURING

|                              |    |
|------------------------------|----|
| Meet The Team                | 06 |
| Bentley Parish Council       | 12 |
| Binsted Parish Council       | 25 |
| 2025 Weather Statistics      | 29 |
| Have Your Say on The Old Rec | 37 |

Cover image © 2026 Nigel Hughes

## In this issue

|  |           |
|--|-----------|
| <b>Four:Twelve .....</b>                   | <b>4</b>  |
| Upgear .....                               | 5         |
| <b>Meet The Team - Fran.....</b>           | <b>6</b>  |
| Messy Church .....                         | 8         |
| <b>Children's Church .....</b>             | <b>9</b>  |
| Ash Wednesday.....                         | 10        |
| <b>Work From Home .....</b>                | <b>11</b> |
| Bentley Parish Council.....                | 12        |
| <b>The Work of Christmas .....</b>         | <b>13</b> |
| Thank you! .....                           | 14        |
| <b>Froyle Wildlife.....</b>                | <b>15</b> |
| Thought For The Month.....                 | 16        |
| <b>Saturday Café.....</b>                  | <b>16</b> |
| Magazine Support .....                     | 17        |
| <b>Real Nativity Froyle 2025.....</b>      | <b>18</b> |
| Benefice Weekend Away .....                | 20        |
| <b>Reverend Emmy Wilson .....</b>          | <b>21</b> |
| Silhouettes in Winter.....                 | 22        |
| <b>Binsted Coffee Shop.....</b>            | <b>23</b> |
| Bentley Memorial Hall .....                | 24        |
| <b>Binsted Parish Council.....</b>         | <b>25</b> |
| Share the Beauty of Your Garden .....      | 26        |
| <b>Binsted School News .....</b>           | <b>27</b> |
| Weather Statistics.....                    | 28        |
| <b>Sudoku Answers.....</b>                 | <b>29</b> |
| Binsted Church Needs You .....             | 30        |
| <b>Music Quiz .....</b>                    | <b>32</b> |
| Wickham 100+ Club.....                     | 33        |
| <b>Bentley's Living Advent Calendar ..</b> | <b>33</b> |
| Curtis Museum & Allen Gallery .....        | 34        |
| <b>Froyle Gardening Club .....</b>         | <b>35</b> |
| Sudoku .....                               | 36        |
| <b>Have Your Day on The Old Rec .....</b>  | <b>37</b> |
| Advertisements.....                        | 38        |
| <b>Local Contact Details .....</b>         | <b>55</b> |
| Services .....                             | 56        |

## Vicar of Bentley, Binsted and Froyle

Rev'd Matt Boyes (Day off - Friday)

matt@benbinfro.co.uk | 07469 270590

C/O Church Office, St Mary's Church, Bentley, GU10 5NA

**Website:** www.benbinfro.co.uk

### Assistant Priest

Christopher Ogilvie Thompson (Day off - Tuesday)

Tel: 07776 178690 | email: christopherot@me.com

### Licensed Lay Minister

Steve Fice (Day off - Friday)

Tel: 07876 767990 | email: steve.fice@btinternet.com

### Anna Chaplain

Fran Harrison annachaplain@benbinfro.co.uk

### Benefice Administrators

Lucinda Edwards and Gemma Ball

(admin@benbinfro.org) 01420 23339

### Honorary Assistant Minister

David Perryman, Treetops, Upper Froyle

Tel. 07710 699183 david.perrypeople@gmail.com

### Parishes Prayer Chain

Nick Carter 01420 489122 or nick.carter1945@outlook.com

### Pastoral Care Team

Nick Carter 01420 489122 or nick.carter1945@outlook.com

**Readers** – Harold Fish, 6 Bonners Field, Bentley. 22947

### Bentley: St Mary's Churchwardens:

Jill Kiely, 11 Broadlands Close, Bentley, GU10 5LE - 22735

Nick Caddick, Tanners, GU10 5NE - 23229

### Binsted: Holy Cross Churchwardens

Jonathan Bourne, Sunnycroft, GU34 4PF – 07766206278

### Parish Safeguarding Officers: Bentley and Binsted

Jill Kiely, Bentley Parish Safeguarding Officer

safeguardingbentley@benbinfro.co.uk

Susan Bourne, Binsted Parish Safeguarding Officer

safeguardingbinsted@benbinfro.co.uk

### Parish Magazine

Articles and Advertising: Any copy or advertising enquiries should be sent to Gemma Ball on the **5th** of the month, by email (magazine@benbinfro.org)

**Editor:** Benefice Team

**Designer:** Mike Hammerton

**Treasurer:** Steve Fice, 07876 767990 steve.fice@btinternet.com

**Distribution:** Bentley – Gill Thallon: gill.thallon@outlook.com

Binsted – Linda & John Kenward: lindawellsuk@yahoo.co.uk

St. Valentine's Day on 14th February has become a feature of our culture, particularly since the 1950's and the realisation of the commercial opportunities such a day presents. After the slump following Christmas, restaurants, florists, card manufacturers and chocolatiers look forward to the boost that this day brings.

Who was Valentine? Well, it's a little complicated and a lot of myth and legend has sprung up around him. There are 3 early church martyrs called Valentinus and the legend is that one was a priest or bishop who smuggled letters to those facing martyrdom encouraging them in their faith. He also carried messages back to loved ones telling them not to despair, but that suffering for Christ leads to a crown of glory. He was successful in this ministry until he was martyred himself.

We hear a lot about those seeking martyrdom in order to achieve paradise. The Christian understanding is very different. Martyrdom is never to be sought, but God's love covers those who die for their faith, and that their death should be an inspiration and give courage to others to live Christian lives, despite the cost.

Persecution continues today. In the 20th century it is estimated that half of the total number of Christian martyrs throughout history were killed in this period. According to some figures, this total is as high as 40 million people. Certainly today, Christians are the most persecuted faith. A very conservative figure states that 7700 died as martyrs in 2025. In Nigeria today the number of martyrs is higher than the rest of the world combined.

1 in 7 Christians worldwide suffer some form of persecution. Whether that is physical or sexual violence or death threats and intimidation.

Valentine reminds us that all lives are precious and seen by God. His love is available to all and the fact that so many are prepared to not renounce their faith, but to suffer the consequences for the love of God they have discovered, is still powerful today. If you want to find out more, look at [www.opendoors.org](http://www.opendoors.org)

May the love of God surround you and your loved ones, and inspire you to live passionate lives that do not count the cost.

Matt Boyes  
*Rector of Bentley, Binsted and Froyle*

You are invited to...

# four: twelve

YOUTH GROUP FOR YEARS 4-6

1 TIMOTHY 4:12

1 TIMOTHY 4:12

1 TIMOTHY 4:12

1 TIMOTHY 4:12

WHEN?

**FRIDAY 6<sup>TH</sup> FEB  
5-6:30PM.**

WHERE?

**BENTLEY PRIMARY  
SCHOOL SPORTS  
HALL.**

WHAT?

**FUN & GAMES,  
SHORT BIBLE  
TEACHING, GROUP  
ACTIVITIES, TUCK  
SHOP.**



Contact Pippa for more info  
[admin@benbinfo.org](mailto:admin@benbinfo.org)

1 Timothy 4:12 – “Do not let anyone treat you as if you are unimportant because you are young. Instead, be an example to the believers with your words, your actions, your love, your faith, and your pure life.”





# UPAGEAR

## Youth group

**School years 7+**

**A welcoming and fun space for young people to gather, to build friendships, and explore Christian faith and values with significant snacks!**

**Thursdays 12<sup>th</sup> & 26<sup>th</sup> February**

**5–6:30pm**

**Bentley Church Hall**

# Meet the Team

*Fran Harrison*



*Pictured: Fran Harrison*

## 1. Quick-fire questions!

**Tea or coffee?** Coffee - please, if you love me, never, ever tea!

**Winter or summer?** Most definitely summer.

**Sunrise or sunset?** I'm a little obsessed with beautiful sunsets

**Sweet or savoury?** Savoury, although when the craving hits, I can demolish a box of Maltesers.

**Apple or android?** Android, but leaning towards Apple so my kids can help me when I'm stuck

**Air guitar or air drums?** Air drums

**Movies or books?** Books

## 2. What's your favourite way to start the day?

With a cup of coffee enjoying the quiet, and contemplating how blessed I am, even when it's hard to feel blessed. I find doing that really makes a difference to my day.

## 3. Tell us more about your role at Benbinfo and how you ended up here?

I'm the Anna Chaplain. I had taken time out of ordained ministry to care for my husband, who had Parkinsons, and died in January 2023. After some months I felt a gentle but increasingly persistent tug from God to return to ministry, and at the same time a friend forwarded me an email about

a role for an Anna Chaplain in this Benefice. I didn't apply, as I thought I'd never even get as far as an interview, but at the 11h hour I sent in my application, and the rest, as they say, is history! I feel so blessed because I absolutely love what I do.

## 4. What things in your role do you look forward to the most?

I just love spending time with people, listening to their stories and their challenges, encouraging them when they're feeling a bit down or lonely, sharing God with them, and just reminding them how loved they are. I come away feeling so blessed by those encounters!

## 5. Outside of parish life, what things do you get nerdy or excited about?

When life gets to be too much, I absolutely have to get to the sea. I find it heals, restores, resets, and those who know me well will often say when I get grouchy, Fran, please get yourself to the beach. I grew up fishing off the rocks with my dad, and swimming and surfing, and it's still something that my soul craves on a regular basis. I also love sitting reading in my conservatory and watching the birds at the feeder, and the just enjoying the peace of the garden.

## 6. What's your most embarrassing moment?

I'm terrible at telling jokes because I always mess up the punch line, and one carol service in front of 700 people I told a joke about a man and his wife who were waiting for Father Christmas ... I got it all embarrassingly wrong, the congregation erupted in laughter, I had to take refuge behind the worship group and choir to compose myself before we could continue. To this day I've not been allowed to forget that evening!

## 7. If you could invent one thing to make your life better, what would you invent and why?

A robot that would wake me up with a cup of coffee every morning.

## 8. To finish, what is your go-to bible verse when you need some encouragement, and how can it help encourage others?

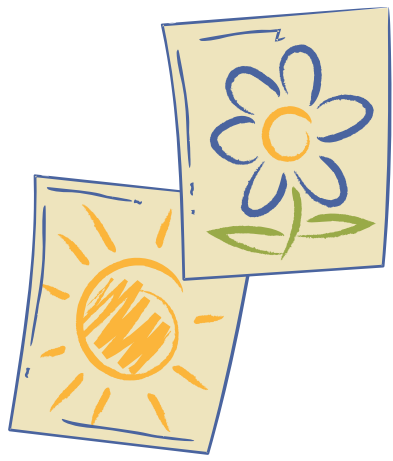
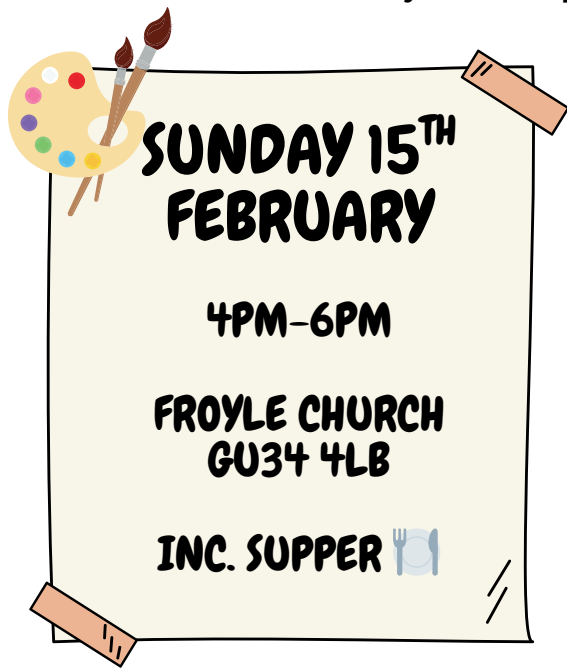
I have many, but would have to mention two - firstly, "What does the Lord require of you? To love mercy, act justly, and walk humbly with your God." That's a wonderful reminder to me of how our lives as Christians should look - reflecting to others the mercy and grace we receive from God on a daily basis, living justly, and living lives of humble obedience and love. The second is for when I feel lacking in confidence or strength - "I can do all things through Christ who strengthens me". A great reminder that we CAN do what we're called to do.





Messy Church celebrates faith with creativity and hospitality. We deliver Bible storytelling and crafts for all generations to enjoy together. At each session there will be crafts, activities, songs and stories to get stuck in with. Come along to a loving and fun atmosphere, that includes a hot meal.

**No cost, just rock up and enjoy!**



# Children's Church in February



A friendly and fun group for children during the Sunday morning service. With stories, games, songs, and crafts, children learn about God and faith in a way that's easy to understand and enjoy.

All ages are welcome – come and join us!

## **1st February**

9:30am Holy Cross Binsted

## **8th February**

9:30am St Mary's Bentley

## **22nd February**

9:30am St Mary's Bentley



**Wednesday 18<sup>th</sup> February 2026**

# Ash Wednesday

Ash Wednesday marks the beginning of Lent, the 40-day period in the lead up to Easter. Lent is a chance to slow down and be more intentional about giving your time and priorities to God, whether through prayer, acts of kindness, or giving something up.

Ash Wednesday itself started in the early Church, around 1st to 4th century as a form of public repentance, through sprinkling of ashes.

In services today, ashes from last year's palm crosses are used to mark a cross on your forehead, and the words, "Remember that you are dust, and to dust you shall return", originating from Genesis 3:19 are said. This is when God tells Adam that his life, like all human life, is temporary, but turning back towards God offers something eternal.

Lent represents the 40 days that Jesus spent in the wilderness, where he fasted, prayed, and resisted temptation (Matthew 4:1-11). Just as Jesus withdrew to focus on God, Lent invites us to step away from daily distractions and reflect on our lives – what's going well, where we need to grow towards God, and how we can deepen our faith.

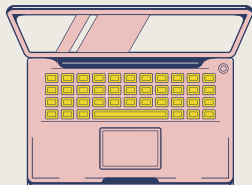
**We have two services on Ash Wednesday  
to mark the beginning of this season:**

**9:30am Froyle Holy Communion**  
**6:30pm Binsted Holy Communion**



# Work from home

## at Bentley Church Hall



Come along to our 'working from home' sessions at Bentley Church Hall. We will have structured days with quiet times for focussed work through the day and the opportunity for a social lunch to beat the loneliness, share ideas, and cheer each other on.

"It's amazing how much work you can do when you're away from distractions at home, surrounded by beautiful nature. I achieved so much more than I expected to, and really enjoyed having such lovely company through the day!"

Becky



**Drop in**  
9am - 5pm

**Dates:**  
February 10th  
February 24th

Bentley Church Hall  
Church Lane  
GU10 5NA

chat to Becky or Gemma  
or email [admin@benbinfro.org](mailto:admin@benbinfro.org) for  
more info

FREE soup lunch or order  
from Bentley Stores

Structured but flexible  
work days

Tea & coffee

WI-FI

Warm space in winter



# CASUAL VACANCY FOR PARISH COUNCILLOR



**Bentley**  
PARISH COUNCIL

## YOUR COMMUNITY NEEDS YOU!

**If you are interested in your local community and would like to help improve and protect it for the future, why not join Bentley Parish Council as a co-opted parish councillor?**

To be eligible for consideration, you must be meet with the following criteria:

- Attained the age of eighteen years
- Be on the electoral role for Bentley.
- Be a Commonwealth Citizen.

And meet with one of the following below:

- Have occupied as owner or tenant, land or premises in Bentley for at least 12 months
- Have worked in Bentley for at least 12 months.
- Reside in Bentley or within 3 miles of the parish for at least 12 months.

You must be free to attend 10 parish meeting's a year, which are held on a Monday evening once a month in the Memorial Hall at 7:30pm.

For more details and information on how to apply, please contact the Clerk on: 07795326539 or email to [clerk@bentleyparishcouncil.gov.uk](mailto:clerk@bentleyparishcouncil.gov.uk)

We look forward to hearing from you!

### **Emma Wadey**

(Clerk & RFO to Bentley Parish Council)  
*13th January 2026*

For further information on the parish council and parish events please go to [www.bentleyparishcouncil.gov.uk](http://www.bentleyparishcouncil.gov.uk)

Follow us on Facebook and Instagram:  
[@bentleyparishcouncil](https://www.facebook.com/bentleyparishcouncil)  
[@bentley\\_parish\\_council](https://www.instagram.com/bentley_parish_council)  
[clerk@bentleyparishcouncil.gov.uk](mailto:clerk@bentleyparishcouncil.gov.uk)



Christmas may be over, but we can strive to capture its message of hope as we continue through 2026 as encapsulated in this poem:

## *The work of Christmas*

by Howard Thurman

When the song of the angels is stilled,  
When the star in the sky is gone,  
When the kings and princes are home,  
When the shepherds are back with their flock,  
The work of Christmas begins:

To find the lost,  
To heal the broken,  
To feed the hungry,  
To release the prisoner,  
To rebuild the nations,  
To bring peace among people,  
To make music in the heart.

So let us be inspired by the work of  
Christmas to give hope and help to those  
in need and offer what we can in love  
and service throughout the year.



# THANK YOU!

## Binsted's Annual Christmas Fair

**Thank you to everyone involved in making the Christmas fair a success and raising over £2,800 plus the profit made by FOBS. [Friends of Binsted School]**

The fair would not happen without the many volunteers from the Church and School communities, stall holders, peoples' donations and customers who came. It is really appreciated. The money raised will be spent wisely both by Binsted School and the Church.

I have been organising the fair since 2016. It has become a bigger event over recent years, therefore, I need to create a team to help me. I am proposing to divide up some of the tasks and need new volunteers to take on various responsibilities. This could be co-ordinating the raffle, taking on an advertising role and helping with wreath making. Please do get in touch if you have some spare time after the Summer as planning starts early, but get in touch before then please. Many hands make light work.

Thank you. Angela

[angela1dunne@sky.com](mailto:angela1dunne@sky.com)

## Save the Date

Christmas Fair in 2026 Saturday 5th December

# WILDLIFE



## HIWARG in Action: Safeguarding Local Amphibians and Reptiles 27th Feb 2026

Join us for a talk by Pete West about the volunteer conservation work carried out by the Hampshire and Isle of Wight Amphibian and Reptile Group (HIWARG) with a special focus on Froyle and surrounding areas. We will be looking at the eleven species known to be in the area (including at least two non-native species), the surveys we have carried out and key target species we are monitoring.

See <https://www.froylewildlife.co.uk/news/>

All welcome, Froyle Wildlife members free, non-members £3, teas and coffees, doors open 7pm for talk to start 7.30pm, Friday 27th February at Froyle Village Hall.

Help out at Bentley Station Meadow?

Bentley Station Meadow is our nearest SSSI and Butterfly Conservation organise work parties to help manage the habitat. Get involved with hands on conservation by coming along 10.30am on the first Wednesdays of each month 4th Feb and 4th Mar 2026. For more information see <https://www.hantsiow-butterflies.org.uk/webpage.php?name=workparties>.



IT ISN'T WHAT WE  
SAY OR THINK  
THAT DEFINES US,  
BUT WHAT WE DO.

---

- J A N E A U S T E N -

## Saturday Café



**Bentley Memorial Hall**

**Saturdays 10.30am – 12.30pm**

**Coffee, tea and cakes**



We look forward  
to seeing you for  
a catch up and  
lively chat.



On most Saturdays.  
Look out for the  
banner outside the  
Hall.

# Bentley & Binsted

PARISH MAGAZINE

**The parish magazine for Bentley & Binsted is distributed to all the houses in our two villages. Most of the costs for producing the magazine come from advertising revenues, in 2024 we had a shortfall of over £3,000, which Bentley and Binsted PCCs need to cover.**

It costs us around £1 to produce each copy of the magazine and we publish 10 editions per year. If you feel that you are able to contribute towards the costs of producing the magazine, please contact the magazine treasurer at [bentleytreasurer@benbinfro.co.uk](mailto:bentleytreasurer@benbinfro.co.uk) or you can donate online by either:

- scanning the QR code below
- or go direct to our donations page at: <https://tinyurl.com/2tv9rtxu>.



Thank you for helping us keep the magazine as something for everyone in Bentley and Binsted.



*Tuesday 23<sup>rd</sup> December 2025*

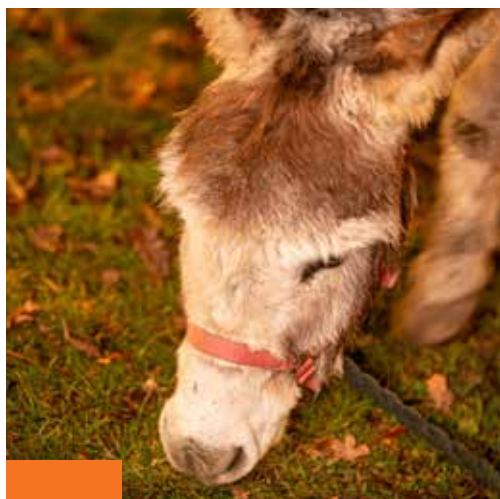
# Real Nativity Froyle 2025

**It's the 6th January 2026, there's snow in the air and on the ground. It's cold. Minus three! Two weeks ago today Froyle was buzzing with activity as we prepared for hosting the benefice Real Nativity event for the first time.**

I was blessed to have six fab-tastic team leaders working with me to deliver the event: Phil Roberts i/c Marshall's, Sarah Roberts i/c Church, Jo' Mills i/c Catering, Allison Cavanagh i/c Performance and Chris Wilson i/c Sound and Vision. In total we had fifty enthusiastic volunteers pitching-in.

There had been planning sessions, briefings, rehearsals and procurements but today was the day we had to get the show on the road!

We'd all been watching weather forecasts very closely for the previous two weeks and two days before curtain-up there was a high degree of certainty that it was going to be a cold, but mercifully dry night.



We had three stages, one Prophet, one Narrator, one Angel Gabriel, Mary and Joseph, three Wise Men, one real baby, the Binsted School Choir and three donkeys to coordinate, light, amplify, move around a large field and up into church. And hopefully a huge crowd. What could possibly go wrong.... (plenty – but that's another story).

We had no idea how many people would come along, so we optimistically planned on one hundred and fifty. We were somewhat surprised, delighted and amazed that nearly three hundred Bentley, Binsted and Froyle villagers came to celebrate the birth of Christ on a cold December night in a field in Upper Froyle. Thank you all for coming along. We hope you all had a fine time that got your Christmas celebrations off to a good start.

It's a great testament to the strength of our village communities that so many people willingly got involved from all three villages. It was held in Froyle this year, but there were people involved from right across the benefice. I'd like to give special mention to James Hudleston for allowing us to use his field and to Mick Wells for getting the ground into perfect condition for the night. Also, thanks to Hugo and Katie Mills for lending us baby Otto, he was of course the star of the show. Chris Wilson and his team from W LX Productions, who sponsored the event, and are based in Kingsley, were quite simply; Magnificent. Their production expertise and West End quality audio-visual genius is what makes The Real Nativity such a special evening.

There are some wonderful photos as well. You can see them on the BenBinFro website. Thank you to Andrea Kozak for skill and hard work capturing the essence of the night.



All donations go to supporting Jack's Place and Naomi House Children's Hospice and we believe this year's total is around £600.

Final thanks to our audience for supporting this event, we can't do it without you– do come along in December 2026.

*Nigel Southern – Producer.*

# Benefice Weekend Away



As a church, we are so excited to be going to Horsley Towers, DeVere Hotel, in March for a weekend away! Church doesn't just happen on Sundays, we have lots going on around our parishes throughout the week, but this is an event we are all really looking forward to. We will be staying for 2 nights with lots planned including teaching from Emmy Wilson (bio right), worship for everyone, and some Saturday night entertainment – to be planned! Food and accommodation is included in the cost, as well as access to the leisure facilities (gym, sauna, pool). There are some beautiful walks around the hotel grounds too.

## Cost

Full weekend: £245 per adult

Day until 5pm (Sat or Sun): £50 per adult

Day including evening meal: £80 per adult

**We are almost full** - so if you would like to come please let us know as soon as you can!

Email [admin@benbinfro.org](mailto:admin@benbinfro.org)  
for questions and a booking form.

**£245**  
per adult

**Horsley Park  
Ockham Road South  
East Horsley  
Surrey  
KT24 6DU**

**Kids go  
FREE!**



# Reverend Emmy Wilson

Emmy Wilson has lived in London for over 50 years. She spent 14 years training and practising as both a State Registered Nurse and a Registered Sick Children's Nurse, culminating in 4 years nursing those affected by HIV and AIDS.

In 1985 Emmy ended her nursing career when invited to join the staff at Holy Trinity Brompton. She began to help those in society whose lifestyles made them most vulnerable to this disease, working with people suffering from AIDS, as well as those caught up in prostitution, drug addiction, alcoholism and homelessness.

Emmy became involved in Prison work in 1991, helping as a part-time volunteer with the Chaplaincy at Holloway Prison, once the largest women's prison in London. In December 1994 she began taking teams to other prisons in the UK to introduce Alpha.

Since 1995 Emmy has visited prisons and spoken about her work at Alpha conferences and Alpha Prison Trainings all around the world, including Scotland, Wales, Isle of Man, Ireland, Rwanda, Zambia, South Africa, Zimbabwe, Ghana, Kenya, Sierra Leone, Uganda, Botswana, Trinidad and Tobago, Grand Turk, Nicaragua, Guatemala, Colombia, Panama, Argentina, Brazil, Fiji, Australia, New Zealand, USA,



Canada, France, Belgium, Denmark, Sweden, Switzerland, Austria, Germany, Russia, Poland, Malaysia, Singapore, Indonesia, Hong Kong, India, China, Japan, Taiwan, and Guam

She was ordained by Bishop Johnson Gakumba in Northern Uganda in 2011 as Chaplain to the Worldwide Prisons, and is based in London.

She has become involved in the fight against human trafficking - having visited brothels in Calcutta and Mumbai - and is passionate not only to raise awareness about this vital work, but to help those enslaved to find freedom.

She retired from HTB's staff on her 70th birthday in February 2023, but is keen to continue to serve the wider Church internationally whenever the opportunities arise, having been appointed as a Global Ambassador for Alpha.



# Silhouettes in Winter

**If you are like me you get as much pleasure from looking at trees at this time of the year, as you do when they are dressed in all their summer finery. I'm talking about deciduous trees primarily, of course. You don't get much change out of a Scots Pine. The absence of foliage brings out the inner beauty of a tree. They seem to be a whole different plant. Especially when backlit at sunrise or sunset the intricate detail of the structure, from stem to boughs, branches to twigs, I find fascinating.**

It is interesting, as well, to find ways to identify the species in their naked state. It can be done, with a lot of practice, even when the patterns of the branches are as unique as fingerprints. If you need to cheat, though, there are books that focus on the form and pattern of the buds, which are as species specific as leaf shapes, and on show now.

Because of distinctions caused by successive Ice Ages, and the brief window between the end of the last

one and these islands' isolation by the tsunami that brought us the English Channel, the native tree flora of Britain and Ireland is singularly impoverished. Excluding hybrids, varieties and shrubs, there are only 63 species and microspecies that seem most likely to have got here without human assistance. Of these 8 are willows, 17 are Sorbus (Rowans and Whitebeams). There are 1,000 – odd kinds of oak in the world; we just have two, pedunculate in the south, sessile in the midlands, and hybrids

from the two in the north. Some on the non-native list that might be a surprise are sycamore, plane, as well as apple, and both chestnuts and walnuts. Before the Roman invasion Britons pretty much had to make do with cobnuts. How did they know when it was Christmas?

Perhaps, then, we shouldn't be snooty about the introduction of new species. Biodiversity is hugely important, after all. Now that so many of us have gardens, and Monty Don, we should turn to our gardeners to provide the variety the food chain needs. Only 13% of Britain's total land area is covered by forest. France has 32%, Austria 47% and Finland 74%. I'm not saying any old tree would do to fill the blanks, but we do need to be more aware that the situation is not at all good. If you have a garden, and some space at the bottom of it, plonk a Pawlonia!

I know we live on some crowded islands, but when you look at the international comparisons, it is hard not to think that we should do better:

|                |                         |
|----------------|-------------------------|
| United Kingdom | 7 trees per person      |
| France         | 182 trees per person    |
| United States  | 716 trees per person    |
| Russia         | 4,461 trees per person  |
| Canada         | 8.953 trees per person! |

Meanwhile let's enjoy the glory of what we do have, 24x7x365.

Ben Hamlin *Tree warden*  
Binstedtrees@gmail.com



# **BINSTED COFFEE SHOP**

**@ THE WICKHAM INSTITUTE**

(Church Street, Binsted GU34 4NX)



**WEDNESDAYS 10am – 12noon (during term-time)**

**PLEASE COME ALONG AND JOIN US**

**COFFEE, TEA and HOME-MADE CAKES**

**ALL WELCOME**

(CHILDRENS' TOYS AVAILABLE)



**FREE WI-FI**



# BENTLEY MEMORIAL HALL



The perfect venue for celebrations, children's parties, meetings, exercise classes or exhibitions. The Hall is conveniently located in the centre of the village and has kitchen facilities and ample car parking.

Downstairs accommodates events for up to 100 people across two rooms.

Upstairs accommodates events for up to 20 people and is ideal for meetings.

## Your Hall Needs You



We are always looking for new Trustees to help run the Memorial Hall. Without new blood, the existing Trustees will wither away with age and the Hall will die.

If you want the Hall to continue to be part of village life, please consider becoming a Trustee.

For more information, please contact  
[bentleymemorialhall@gmail.com](mailto:bentleymemorialhall@gmail.com).

## The Bentley Memorial Hall 100+ Club

The winners of the recent draws of the Bentley Memorial Hall 100+ Club are:

December: 1st Libby Allen 2nd Richard Slator 3rd Hew and June Pike

January: 1st Hugh and Sue Chissell 2nd Jennifer Bryan-Brown 3rd Christine Murray

**Congratulations to the winners.**

We welcome new members to the 100+ Club. Each number costs £12 per year (£1 per month) and there are three prizes every month! 50% of membership fees go to the 100+ Club prize fund while the remaining 50% goes to the Memorial Hall to help with our running costs. The more people who join the 100+ Club, the more money paid out in monthly prizes.

To join the 100+ Club, please e-mail a request to [bentleymemorialhall@gmail.com](mailto:bentleymemorialhall@gmail.com).

For room bookings and additional information about the Hall, please visit our website  
[www.bentleymemorialhall.org](http://www.bentleymemorialhall.org).



# **Binsted Parish Council**

## **School Traffic Consultation**

**Last month we reported on the traffic calming and speed limit reduction plans in Frith End, our continued commitment to focus on road safety issues across the whole parish, and to keep you informed of progress and plans.**

Last year, in collaboration with Binsted Primary School, we carried out a survey with parents and local residents on the subject of school traffic and parking issues to identify some of the challenges and possible solutions at busy school drop-off/pick up times.

It's fair to say that every school and their neighbours have issues with traffic and parking to contend with, with traditional village schools particularly having to deal with children coming from a wider geographical area, limited parking spaces on narrow country roads, and the lack of pavements. But whilst there are often similar themes, individual schools have specific issues based on their immediate surroundings and road layouts, traffic volumes and types of vehicles using the roads, so a big thank you to everyone who responded with their thoughts and ideas.

We have shared this feedback to start developing a transport plan, working in partnership with the school and Hampshire County Council's school transport team. An officer from the team visited the school before Christmas to

see some of the problems first hand, they have provided some excellent ideas and will be providing practical support based on extensive experience of initiatives that have proved to be effective elsewhere in the county, as well as helping to coordinate action across other functions at the County Council, such as Hampshire Highways.

In particular we have been looking at how car usage for school transport can be minimised (for example more car-sharing and more children using the school minibus), measures to encourage and incentivise safer parking and walking, and whether changes to road markings could be improved.

As we said last month, this is one of a number of traffic related projects we are working on, so we'd love to hear from you if you could spare a couple of hours a month to help our friendly bunch of volunteers and councillors who run our parish's Transport Working Group and Community Speed Watch teams. If you're interested, please phone Alison on 07851 677057, or contact Mike our Clerk on [clerk@binstedparishcouncil.org.uk](mailto:clerk@binstedparishcouncil.org.uk)

# Share the Beauty of Your Garden for Local Hospice Care



Celebrate the joy of nature by opening your garden to help fund local [Hospice Care](#).

Every spring and summer, local charity [Phyllis Tuckwell](#) invites garden-lovers across West Surrey and North-East Hampshire to take part in its [Open Gardens](#) event. By opening your garden for the public to look around and enjoy, and charging a small entry fee to visitors, you'll raise money to help fund the vital palliative and end of life care that Phyllis Tuckwell provides for patients and families who are living with an advanced or terminal illness, such as cancer.

[Open Gardens](#) is all about sharing the beauty of your garden with others, whatever its size and design. Whether you have flower meadows and woodland streams, or small shrubs and pots of flowers, Phyllis Tuckwell would love you to join in.

"We're looking for unique and interesting gardens of all sizes to swing open their garden gates to the local community, or just to family and friends if you prefer, this spring and summer," said Helena Burke, community fundraiser at Phyllis Tuckwell. "If you'd like to, you can



sell refreshments too, or include plant sales, to raise even more money. By taking part, you'll help fund the important care we provide for those who really need our specialist services. We'd also like to thank Kebur Garden Materials for once again kindly sponsoring this event."

Every day, Phyllis Tuckwell supports over 250 patients, relatives and carers, but as the NHS/Government only cover 25% of its costs, it has to raise over £25,000 every single day to do this. If you have a garden that others would love to visit and admire, or maybe could even get together with your neighbours or local community to arrange a group opening, Phyllis Tuckwell would love to hear from you. Visit [www.pth.org.uk/open-gardens](http://www.pth.org.uk/open-gardens), email [fundraising@pth.org.uk](mailto:fundraising@pth.org.uk) or call 01252 729446 to find out more and to register.





## School News - Binsted CE Primary

At Binsted we believe in the Christian values of Faith, Hope & Love.

### Life in Silver Birch has been busy and full of learning since our return from a wonderful Christmas break.

The children got straight back in to learning , working really hard to master tricky multiplication and division skills in their maths lessons, as well as becoming amateur detectives in our English lessons, following our focus text 'High Rise Mystery'. The story focusses on two sisters, who are super sleuths, working to solve the mystery of the disappearance of their neighbour and art teacher, Hugo. Silver Birch have been using their inference, prediction and retrieval skills to find clues in the text to help us build a picture of who the villain might be that left Hugo's body in the rubbish area behind the flats. The children have had great fun

debating, writing diary entries and making character maps to explore connections between the characters.

We are also busy practising for our Young Voices trip. The children are all very excited to travel to the O2 and join with many other schools to create one huge children's choir! The children have worked really hard to learn all of the songs and dance moves and are looking forward to rocking the O2 on the 21st January!

Zoe Bunce

Year 5/6 Teacher (Silver Birch)

Binsted CofE Primary School



## WEATHER STATISTICS



11

**November  
2025**

12

**December  
2025**

### Temperature



**Daytime maximum**  
17.7°C (13<sup>th</sup>) to 4.7°C (20<sup>th</sup>)  
11 days below 10°C



**Nighttime minimum**  
-5.8°C (21<sup>st</sup>) to 12.5°C (4<sup>th</sup>)  
9 nights below 0°C

**Daytime maximum**  
13.7°C (7<sup>th</sup>) to 2.7°C (31<sup>st</sup>)  
12 days below 10°C

**Nighttime minimum**  
-5.6°C (31<sup>st</sup>) to 10.7°C (9<sup>th</sup>)  
10 nights below 0°C

### Rainfall



**Total for month**  
4.38 inches (111.2 mm)  
over 17 days



**Wettest day**  
1.17 inches (29.6 mm) (27<sup>th</sup>)

**Total for month**  
4.69 inches (119.2 mm)  
over 20 days

**Wettest days**  
1.72 inches (43.6 mm) (18<sup>th</sup>)

### Wind



**Wind direction\***  
West South West



**Maximum gust**  
22 mph (3<sup>rd</sup>)

**Wind direction\***  
West South West

**Maximum gust**  
27 mph (18<sup>th</sup>)

*Parish Weatherman*

\*Dominant





## WEATHER STATISTICS

**FOR**

**2025**



### Temperature



**Highest daytime**

34.2°C (11<sup>th</sup> July)



**Lowest nighttime**

-8.4°C (11<sup>th</sup> January)

### Rainfall



**Total rainfall**

30.78 inches (781.7 mm)  
(wettest month  
was January)

### Wind



**Strongest gust**

31 mph  
(4<sup>th</sup> October)

*Parish Weatherman*

## Sudoku December & January Answers

Sudoku EASY

|   |   |   |   |   |   |   |   |   |
|---|---|---|---|---|---|---|---|---|
| 3 | 5 | 2 | 4 | 7 | 6 | 1 | 8 | 9 |
| 1 | 6 | 8 | 9 | 5 | 2 | 7 | 3 | 4 |
| 7 | 4 | 9 | 8 | 1 | 3 | 6 | 2 | 5 |
| 4 | 2 | 5 | 6 | 9 | 7 | 8 | 1 | 3 |
| 6 | 8 | 3 | 2 | 4 | 1 | 5 | 9 | 7 |
| 9 | 7 | 1 | 5 | 3 | 8 | 4 | 6 | 2 |
| 8 | 9 | 7 | 3 | 6 | 5 | 2 | 4 | 1 |
| 2 | 1 | 4 | 7 | 8 | 9 | 3 | 5 | 6 |
| 5 | 3 | 6 | 1 | 2 | 4 | 9 | 7 | 8 |

Sudoku MEDIUM

|   |   |   |   |   |   |   |   |   |
|---|---|---|---|---|---|---|---|---|
| 1 | 8 | 4 | 2 | 5 | 9 | 6 | 7 | 3 |
| 9 | 3 | 6 | 8 | 4 | 7 | 5 | 2 | 1 |
| 2 | 5 | 7 | 1 | 3 | 6 | 8 | 9 | 4 |
| 6 | 2 | 3 | 4 | 9 | 1 | 7 | 5 | 8 |
| 4 | 9 | 8 | 3 | 7 | 5 | 1 | 6 | 2 |
| 7 | 1 | 5 | 6 | 8 | 2 | 4 | 3 | 9 |
| 3 | 7 | 2 | 5 | 1 | 4 | 9 | 8 | 6 |
| 5 | 6 | 1 | 9 | 2 | 8 | 3 | 4 | 7 |
| 8 | 4 | 9 | 7 | 6 | 3 | 2 | 1 | 5 |

Sudoku HARD

|   |   |   |   |   |   |   |   |   |
|---|---|---|---|---|---|---|---|---|
| 3 | 8 | 1 | 4 | 6 | 7 | 2 | 5 | 9 |
| 6 | 2 | 4 | 5 | 9 | 8 | 1 | 7 | 3 |
| 9 | 7 | 5 | 2 | 1 | 3 | 4 | 8 | 6 |
| 7 | 4 | 9 | 3 | 8 | 1 | 5 | 6 | 2 |
| 5 | 3 | 8 | 7 | 2 | 6 | 9 | 4 | 1 |
| 1 | 6 | 2 | 9 | 4 | 5 | 8 | 3 | 7 |
| 4 | 1 | 3 | 6 | 5 | 2 | 7 | 9 | 8 |
| 8 | 9 | 7 | 1 | 3 | 4 | 6 | 2 | 5 |
| 2 | 5 | 6 | 8 | 7 | 9 | 3 | 1 | 4 |



# Binsted Church needs your help.

**Help preserve the building for generations to come.**

**Become a Friend of Binsted Church and...**

**HELP** provide essential funding for the maintenance of this historic building

**HELP** preserve the church for generations to come

**HELP** retain the character and heritage of our village

**Your friendship will enable you to...**

- ✦ Sponsor the cost of maintenance of the building and churchyard for a day, currently £35
- ✦ Choose a day of special significance to you and your family
- ✦ Have your chosen name and day recorded formally in a Book of Friends kept permanently displayed in the church, next to a lit candle

For more information and a sponsors' form, please visit [www.benbinfro.co.uk](http://www.benbinfro.co.uk) or scan the QR code.



The Friends of Binsted Church is under the jurisdiction of Binsted PCC, a registered charity in the name of The Parochial Church Council of the Ecclesiastical Parish of Holy Cross, Binsted, Hampshire.

Registered Charity Number 1207775.

# Binsted Church Needs Your Help



## **Become a Friend of Binsted Church and help maintain the heritage of our village.**

The Church of the Holy Cross is a beautiful, mainly Norman church with 13th-15th Century additions. It is a Grade-1 Listed building and a fine example of this country's architectural history with many unique features and an especially fine interior.

However, the task of maintaining the fabric of the building and the churchyard has become very challenging. Members of the congregation continue to look for ways to manage repairs effectively, reduce costs and boost income by holding fund-raising events. Nevertheless, this is not proving to be enough.

A group of us, who are all local residents but are not regular churchgoers, have become concerned and realise the maintenance costs cannot continue to be met primarily by the congregation. We know we are fortunate to have such a significant and historic church in our village. We also like to hear the church bells or simply show it to our visitors, including the grave of Field Marshal Viscount Montgomery.

We therefore believe we should help in the upkeep of the church and have established The Friends of Binsted Church. Our purpose is to help towards the maintenance costs only of the building and not anything connected to the church services or its administrative costs.

We do hope you feel the same way because we would like you to become a Friend of Binsted Church and sponsor, for one day (or days) a year, the upkeep of the building and the churchyard. This currently amounts to £35 per day.

You may like to select a day (or days) marking the anniversary of a wedding, baptism, birthday or some other day of special significance to you or your family. We will record names and dates in the Book of Friends which is permanently displayed in the church. A candle next to the Book will also be illuminated to recognise the occasion.

Please join us and help keep our historic and beautiful church a central part of our village and community. A sponsorship form to become a Friend of Binsted Church is available online via the QR code or email [friendsofbinstedchurch@gmail.com](mailto:friendsofbinstedchurch@gmail.com) and we will post one to you.

**We look forward to welcoming you  
as a Friend of Binsted Church.**



# The Anderson Jones Music Quiz

**The first Anderson Jones estate agents music quiz held at The Star Inn on 12th November was a sell out and a huge success. A massive thanks to Emma and her team for the ticket sales and giving Emma a night off to enjoy a quiz for a change.**

Due to the squeaky feedback from the microphone, Adrian persevered with shouting out the questions and running up and down the pub in order that everyone could hear. It did wonders for Adrian's step count, but not so much for his voice for his open mic night the following evening in Farnham. He sounded like a cross between Barry White and Lee Marvin - a very topical musical reference for our younger readers. More importantly, £355 pounds

was raised on the night towards running the Parish Magazine. A huge thanks to Anderson Jones for coming up with the idea, putting it all together and providing all the prizes. First prize was a very special bottle of gin from Katherine Jenkins Cygnet distillery. Unfortunately, Katherine was not able to join us on the night!

Congratulations to the winners, Quizteam Aguilera, and a massive thanks to all the teams for generously paying to take part and making it such a fun night. Even those at the bottom of the leader board came away with the original 7 inch single Clive Dunn's "Grandad". Who ever said it was a booby prize?

Due to the success and everyone having such fun, there is going to be another quiz in late February or early March with a few new categories and some of the favourites from last time and the microphone issue has been sorted too.

To put your name down in advance for a table, please let the team know at The Star or message Adrian and Candice on [hello@andersonjones.co.uk](mailto:hello@andersonjones.co.uk)





# THE WICKHAM INSTITUTE (VILLAGE HALL), BINSTED

[www.wickhaminstitute.co.uk](http://www.wickhaminstitute.co.uk)



LOTTERY FUNDED

## *The Wickham Institute 100+ Club*

As promised, listed below are the lucky winners of the  
December 2025 & January 2026 draws:

### December 2025

1<sup>st</sup> prize Dennis Smith

2<sup>nd</sup> prize Jim Hilson

3<sup>rd</sup> prize Sam Barrow

### January 2026

1<sup>st</sup> prize Janet Burton

2<sup>nd</sup> prize Malcolm Kerry

3<sup>rd</sup> prize Ann Mann

Details of the February 2026 draw will appear in the next magazine.

Remember each number only costs £12 (£1 per month) and you have three  
chances to win each month!

50% of the monthly purchase price of each number goes in prizes and 50% to  
the running costs of The Wickham Institute. The more people that participate  
in the 100+ club, the more money that is paid out in monthly prizes.

If you would like to participate an application form can be obtained from  
Andrew Croom-Johnson on 01420 23157 or email a request to Andrew at

[treasurer@wickhaminstitute.co.uk](mailto:treasurer@wickhaminstitute.co.uk)

## Bentley's Living Advent Calendar

### *THANK YOU!*

We did it! We had no idea how it would work or what people would think, but  
the results have been incredible and exceeded all expectations. All of your hard  
work and creativity brought many people a lot of joy during the Christmas period,  
when residents were able to get out and about to enjoy the trail. Not only that,  
but together we have raised over £900 for Phyllis Tuckwell Hospice, a much  
loved local charity that has supported many families in our community. Thank  
you again and I really hope you will consider taking part again later this year.

*Jade Bower*

# CURTIS MUSEUM & ALLEN GALLERY

(01420 82802)

## OPENING TIMES

Tuesday to Sunday

Curtis 10am – 4.30pm. Allen 10.30 – 4pm

[www.hampshireculture.org.uk/curtis-museum](http://www.hampshireculture.org.uk/curtis-museum)

[www.hampshireculture.org.uk/allen-gallery](http://www.hampshireculture.org.uk/allen-gallery)

### Rediscovering the Allen Gallery

Alton's Allen Gallery is an intimate setting for one of the nation's most outstanding collections of ceramics. Since autumn 2022, supported by The National Lottery Heritage Fund, Hampshire Cultural Trust has been working to rediscover the Allen Gallery for the people of Alton and the surrounding area, building partnerships with local organisations, hosting workshops, talks, films and undertaking auditing and research to tell the stories of the objects on display.

**The Gallery closed at the end of 2025 for its major refurbishment** and is expected to reopen in early 2027. When it returns, visitors will find revitalised galleries, a welcoming community space, and fresh ways to experience our nationally and internationally important ceramics collection.

During the closure, the community programme will continue to run from the nearby Curtis Museum.

### CURTIS MUSEUM 2026

#### Upcoming events for February.

Step into the past and bring history to life through your own creativity! Join us for a **week-long celebration of traditional crafts**, where each day explores a different historical era and its unique artistic techniques. From ancient patterns to medieval motifs and beyond, you'll create your own piece of patterned fabric as the week progresses, building a personal collection to take home as a lasting memento.

Discover, design, and immerse yourself in the artistry of ages gone by. Perfect for craft enthusiasts, history lovers, and anyone curious about the stories behind the stitches. Saturday 14th to Saturday 21st February, 10am - 4.30pm.

We'll also be running **Craft Club** on the Thursday of half term (19th), 11am - 3pm, £2 per craft with your 5<sup>th</sup> craft free.

**Stepping Stones** Young People's Programme, Saturday 14 February - Saturday 21 March, 10.30 - 12.30. Regular free Saturday workshop supporting wellbeing for young people aged 11 - 14. Spaces need to be booked in advance. Please visit the website for details - <https://www.hampshireculture.org.uk/curtis-museum>

**Sewing workshop** for adults (age 16+) with local artist and maker Sachiko Mason, Saturday 21 February, 11am - 1pm. Stitch a beautiful toile de jouy style fabric bag, inspired by the Allen Gallery Collection. Book online at <https://www.hampshireculture.org.uk/curtis-museum>

#### Museum by Torchlight

Our ever-popular exploration of the Curtis Museum by the glow of your torch returns during half-term. Tuesday February 17th, 5.30 to 7.30pm. Follow the trail and win a prize. £3.75 per (accompanied) child, adults free.

## Talks - Change of Venue

The Friends of the Curtis Museum and Allen Gallery have a full programme of talks during 2026. Friends talks will be held in **Room 7 of the Alton Community Centre, Amery Street, Alton GU34 1HN**. Alton Community Centre is located on one side of the car park in Amery Street (sat nav GU34 1HN). <https://www.altoncomcen.org.uk>, telephone number 01420 85057.

The first talk takes place on Thursday 12th February, when **Tony Cross** will speak about Aspects of Alton's History. Doors open at 7pm for 7.30 start. FREE. Donations welcome from Guests.

Trails are always on hand in the Curtis - please ask at Reception for the latest.

## Froyle Gardening Club Wednesday February 11th 7.30pm at Froyle Village Hall

### Sir Harold Hillier Gardens Through the Year. David Jewell

For our first talk in 2026 we are very lucky to have David Jewell, former Floral Superintendent at RHS Wisley and curator at Hillier Gardens. He is a regular contributor to the RHS Garden Journal and will give us an insight into the changes and enhancements that the gardens have undergone in recent years.

Everyone is welcome to come to our talks and events. For full details please see the website [Froylegardeningclub.co.uk](http://Froylegardeningclub.co.uk)

Membership is £10 for a year of talks and advice and discounts at Southern Fruit Trees and Garthowen Garden Centre. For non members talks are £3.00 payable on the night. You can also join or renew your membership at the talk.

# Sudoku Games

## Sudoku game EASY

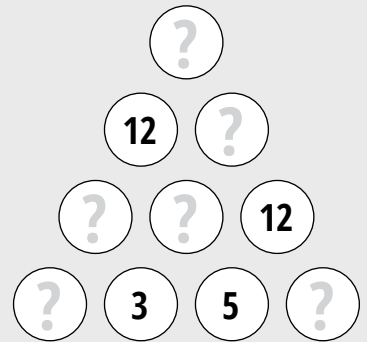
|   |   |   |   |  |   |   |   |   |
|---|---|---|---|--|---|---|---|---|
|   | 5 | 2 |   |  | 6 |   |   |   |
| 1 | 6 |   | 9 |  |   |   |   | 4 |
|   | 4 | 9 | 8 |  | 3 | 6 | 2 |   |
| 4 |   |   |   |  |   | 8 |   |   |
|   | 8 | 3 | 2 |  | 1 | 5 | 9 |   |
|   |   | 1 |   |  |   |   |   | 2 |
|   | 9 | 7 | 3 |  | 5 | 2 | 4 |   |
| 2 |   |   |   |  | 9 |   | 5 | 6 |
|   |   |   | 1 |  |   | 9 | 7 |   |

All you need to do is to fill in all of the squares in the puzzle so that each column of 9, each row of 9 and each 3 x 3 square includes every number from 1–9.

**No prizes** – just a huge amount of satisfaction!

### Number Pyramid

What are the missing numbers?



## Sudoku game MEDIUM

|   |   |   |   |   |   |   |   |
|---|---|---|---|---|---|---|---|
|   | 4 |   |   | 1 |   |   | 3 |
|   |   |   | 5 |   | 7 | 9 |   |
| 5 | 6 |   |   | 2 | 8 |   | 4 |
| 1 |   |   | 2 | 7 |   | 8 |   |
|   | 8 | 2 |   |   | 9 | 6 |   |
|   | 3 |   |   | 1 | 8 |   | 7 |
| 3 |   | 6 | 1 |   |   | 9 | 8 |
| 4 | 7 |   |   | 8 |   |   |   |
| 8 |   |   | 5 |   |   | 4 |   |

## Sudoku game HARD

|   |   |   |   |   |   |   |   |   |
|---|---|---|---|---|---|---|---|---|
| 6 | 8 |   |   |   | 1 |   |   | 3 |
|   |   | 7 |   |   | 4 |   |   |   |
|   |   |   | 8 | 2 |   |   |   |   |
| 8 | 7 |   |   |   | 9 | 2 |   | 4 |
|   | 4 |   | 3 |   | 2 |   | 8 |   |
| 2 |   | 3 | 4 |   |   |   | 9 | 6 |
|   |   |   |   | 3 | 6 |   |   |   |
|   |   |   | 5 |   |   | 4 |   |   |
| 7 |   |   | 2 |   |   |   | 6 | 5 |

Sudoku game answers shall be in the next edition of the Bentley & Binsted Parish Magazine





# Have your say on the future of the Old Rec

The Old Rec

**This is not about development or construction.**

We are exploring ideas for how the land could continue to be used as open green space for the community - including the option for it to remain as it is.

**Complete the short survey** and help shape what happens next.

**Takes around 3-5 minutes.**

- Help decide whether the Old Rec should stay as it is or change
- Shape priorities if change is supported
- Ensure decisions are based on community views

**Scan to take part**



**Or visit:**

<https://forms.gle/GBA5zNgA29yohLnGA>

**Deadline: Friday 6<sup>th</sup> March**

# CHARLES READ

& DAUGHTER

INDEPENDENT FUNERAL DIRECTORS & MEMORIAL MASONS



24 HOUR PROFESSIONAL  
& PERSONAL SERVICE

PRIVATE CHAPELS OF REST

PRE PAID & PRE ARRANGED FUNERALS

01420 83551

[www.charlesreaddaughter.uk](http://www.charlesreaddaughter.uk)

11-13 Turk Street, Alton, Hampshire GU34 1AG



Full FD Members



Your home  
Your care  
Your choice



 **alina homecare**  
*Care at Home*

Don't let the winter lead to loneliness.

We're here to give keep your loved one company in their own home.

Our professional friendly carers provide award winning respectful and compassionate care.

Regular visits, overnight and  
Live-in care available.

Let's chat...

**01252 227222**

[alinahomecare.com](http://alinahomecare.com)



**Top 20 UK  
Home Care  
Group Award  
2021 - 2025**



# Local Handyman for Hire

Available for all DIY and gardening needs

*Based in Locally*

Please call David on: **07931 422000**

For enquiries and any further information

## **Jobs Include:**

Plumbing

Carpentry

Decorating

TV, Picture and Mirror hanging

Wooden Floor laying

Gardening and Landscaping

Shed Building

Tip Runs (for garden waste)

Fence/ Gate repair

Gutter Clean and repair

Car repair (Brake replacement / Service)



## **Why choose me?**

- Friendly professional Service
- Careful tidy workmanship
- Local and Dependable
- Happy to help with one-off jobs or regular work

For any other jobs please enquire on **07931 422000**

**R. A. CROFT LTD**  
*Bespoke  
Building & Joinery*



***All Aspects of Building Work Undertaken***

***01420 521152***

Listed Buildings

Extensions

New Houses

Refurbishments

General Maintenance

Registered House Builder

***Unit 2F, Blacknest Industrial Park, Blacknest Road,***

***Alton, Hampshire GU34 4PX***

***Email: [info@racroftltd.co.uk](mailto:info@racroftltd.co.uk)***



## Passion for home cooked & seasonal food

New menu

Large gluten free menu

Pizzas

Real ales, ciders, gins & large wine selection

Family & dog friendly

Large terrace & garden

Fortnightly quiz nights

Deluxe en-suite bedrooms

Experience our warm hospitality

The Street, Binsted, Alton, GU34 4PB

01420 446 454

[www.binstedinn.co.uk](http://www.binstedinn.co.uk)



# ADVERTISE YOUR BUSINESS HERE

**CONTACT US**  
[magazine@benbinfo.org](mailto:magazine@benbinfo.org)



## Spanish GCSE Tuition

Contact Juana  
[juana.garcia@live.co.uk](mailto:juana.garcia@live.co.uk)  
or 07957 695808

# Bentley Memorial Hall

The perfect venue for celebrations, weddings, children's parties, meetings, specialist classes or exhibitions.

Conveniently located in the centre of the village with kitchen facilities and ample car parking.

Main hall accommodating up to 100 people and two meeting rooms accommodating up to 60 people each. Main hall and one meeting room can be combined for larger events.

For more information and to book the hall, please go to the website [www.bentleymemorialhall.org](http://www.bentleymemorialhall.org)



Need a venue for a party  
or business meeting?

**Why not hire**

**Binsted Sports Pavilion?**

Available evenings, weekends  
and in office hours on Fridays

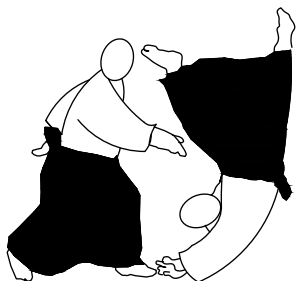
Located at Binsted Recreation Ground  
The hall has great views and free parking  
Cost is £50 for 4 hours  
Contact [clerk@binstedparishcouncil.org.uk](mailto:clerk@binstedparishcouncil.org.uk)  
to discuss your requirements







# KI AIKIDO



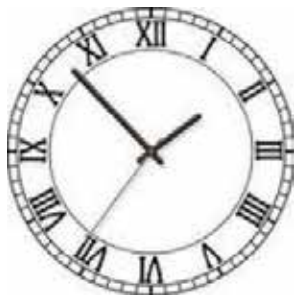
A TRADITIONAL JAPANESE MARTIAL ART

Using coordination of mind and body Ki Aikido teaches calmness, confidence and eliminates fear in everyday life

This powerful but non competitive art is suitable for everyone irrespective of age, sex or physical ability

Monday & Thursdays 7.30pm - 9.30pm  
Bentley Memorial Hall, Bentley, Nr ALTON

Enquiries: Email: [altonaikido@gmail.com](mailto:altonaikido@gmail.com)  
Mobile: 07717534643



M. W. SHAW – FARRINGTON

*Antique Clock Repairs  
& Restoration*

*House calls undertaken*

*All work guaranteed*

*Tel. Mr. M. W. Shaw*

*01420 588457*

## ADVERTISE YOUR BUSINESS HERE

## CONTACT US

[magazine@benbinfro.org](mailto:magazine@benbinfro.org)

**SMS: 07553 15 62 92**

I'm an Accredited Counsellor and Chartered Psychologist offering support for individuals and couples.

**COUPLES COUNSELLING: £70 PER SESSION**

**INDIVIDUAL COUNSELLING: £60 PER SESSION**

➔ **Bookings: [epsychol.com](http://epsychol.com)**

*Online or In-Person sessions (Kingsley)  
Dr Eliza Margrove MA PhD CPsychol MBACP*



# PAX HILL



## Care Home



Provides the highest level of care, stunning accommodation with beautiful views and excellent facilities.

There are four separate care environments, enabling residents to share their lives with those of similar needs.



01420 525882 | [www.paxhill.co.uk](http://www.paxhill.co.uk)  
Bentley, Farnham, Surrey GU10 5NG







## Your Local Bentley Agent

Appointing Anderson Jones means working directly with owners Adrian and Candice, who build genuine relationships to understand your property goals. Enjoy a personal, local service backed by cutting-edge technology, standout marketing, and full support.

Follow us on social media @AJPropertyUK

w: [andersonjones.co.uk](http://andersonjones.co.uk) | T: 01252 988488 | E: [hello@andersonjones.co.uk](mailto:hello@andersonjones.co.uk)



## THE WICKHAM INSTITUTE (Binsted Village Hall)



LOTTERY FUNDED

Having a party? Need a venue for a one-off meeting or conference?  
Looking for somewhere to hold a regular club/society meeting or class?

Why not consider hiring our lovely Grade II listed hall. It is light and airy, with a stage and a modern kitchen. The hall can seat up to 80 at tables or set up for conferences and meetings, and can accommodate up to 120 standing (Covid restrictions may apply).

We have very reasonable hire rates, why not contact us.



**For bookings or further information,  
please contact the booking secretary on  
01420 22388 or visit our website  
[www.wickhaminstitute.co.uk](http://www.wickhaminstitute.co.uk)**





**DOWNIE &  
GADBAN**

**Residential Conveyancing - Wills -  
Powers of Attorney - Probate -  
Commercial Property - Property  
Development - Dispute Resolution**

Instant conveyancing quotes available via our website  
[www.downieandgadban.co.uk](http://www.downieandgadban.co.uk)

We are here to help you.  
Call **01420 82879** or email us at  
**info@downieandgadban.co.uk**

**Why Choose Us?**

A traditional practice with a modern approach, putting its clients firmly at the heart of its business. We pride ourselves on a client-focused, solicitor-led service, ensuring that our clients get advice that is tailored to their individual needs, whether on routine residential property transactions or more complex and substantial matters. We have been serving generations of families in the Alton area since 1905.



review solicitors  
TRUSTED LAW FIRM



"EXCELLENT"  
ALL 15 YEARS | 100 REVIEWS



**[www.downieandgadban.co.uk](http://www.downieandgadban.co.uk)**

**Rockbourne House, 100 High Street, Alton, Hampshire, GU34 1ER**

Welcome to  
**Mint Condition**  
Your Fitness Experts



- . Private Personal Training
- . Pilates Classes
- . Injury Rehabilitation

**Contact us today to start your journey..**

**[www.mint-condition.com](http://www.mint-condition.com) | [gym@mint-condition.com](mailto:gym@mint-condition.com) | 01420 590590**

**Mint Condition, Steyne Farm, Binsted, Hampshire, GU34 4NU**

# ADVERTISE YOUR BUSINESS HERE

## CONTACT US

magazine@benbinfro.org



**We are a long established removal business, based near Alton.**

We can provide a package tailored to your exact requirements. Our service is professional and efficient, rivalling the larger companies on customer care and cost.

Free Quotations | House Clearance  
Packing Service | Secure, Dry Storage

Please call Adrian James at any time

**07703 683961**

Or email [adrian@bellemoor.co.uk](mailto:adrian@bellemoor.co.uk)

[www.bellemoor.co.uk](http://www.bellemoor.co.uk)

## Physiotherapy

In the centre of Bentley

by

**Pippa Blizzard**

Chartered Physiotherapist  
MCSP HCPC BAHT AACP

**07714 239644**

[physiotherapy@pippa-blizzard.co.uk](mailto:physiotherapy@pippa-blizzard.co.uk)

[www.pippa-blizzard.co.uk](http://www.pippa-blizzard.co.uk)



[WWW.JUANAGARCIAIYOGA.CO.UK](http://WWW.JUANAGARCIAIYOGA.CO.UK)

## NEW YOGA CLASS

### Term Time Yoga

Wednesdays @ Bury Court 9.30 am

**FREE TASTER SESSION ON MARCH 11**

**BOOK NOW, BEGINNERS WELCOME**





# ART CLASSES FARNHAM



## Educational & Skill-Building

Whether you're an **absolute beginner** looking to **learn to draw and paint**, or an **intermediate** aiming to refine your skills, our **10 week Art Course** is a great way to enhance creativity and boost brain power.



## Well-Being & Relaxation

A calming and mindful practice that promotes overall well-being.



## Social & Fun

Meet like-minded people and make new friends.



Tel: 07936 646597 | Email: [carrie@creativeartclasses.com](mailto:carrie@creativeartclasses.com)  
[www.creativeartclasses.com](http://www.creativeartclasses.com)



## BEN MACDONALD ASSOCIATES

Chartered Architects & Surveyors

- Extensions
- Refurbishment
- One off Houses
- Farm Building Conversions
- Listed Building Alterations

Total design and management  
Service

Hoggatts House, Kingsley  
Bordon GU35 9NY  
Mob. 07511 994 062

email:  
[benmacdonald\\_architect@hotmail.com](mailto:benmacdonald_architect@hotmail.com)

## THORNE & CO

## TAXATION CONSULTANTS

Friendly, efficient service to deal  
With your Accounts and  
Self-Assessment Returns

Initial Interview Free  
Evening appointments available

01420 22998

Email: [thornebentley@aol.com](mailto:thornebentley@aol.com)



## AWARD WINNING LOCAL TOILET HIRE

Perfect for weddings, fetes and sporting events

Luxury Toilet Trailers  
Single Portable Loos  
Accessible WC's & Urinals  
Long Term Building Site Loos

01420 588 355  
hello@loos.co.uk  
www.loos.co.uk



Visit our  
showroom  
Unit 5, Aylesford  
Frye Buildings,  
Frye Road,  
GU24 4BY



### Our services-

- Manual and Power Sweeping
- Log Burners & Open Fires
- Birdsnest Removal
- CCTV Inspections and Reports
- Cage, Cap & Cowl Supply & Fit
- Rayburns & Agas
- Ingle Nooks
- Stove Maintenance
- Hetas Accredited Stove Installation'

T: 01420 549064

www.stubbyschimneysweeping.co.uk  
www.stubbysstoveinstallations.co.uk  
info@stubbyschimneysweeping.co.uk



MARTIN  
CASHMORE  
FENCING

## FENCING & GATES SUPPLIER

01420 521 040

SALES@CASHMOREFENCING.CO.UK



WE STOCK A LARGE RANGE OF PRODUCTS, INCLUDING :

- |                          |                         |
|--------------------------|-------------------------|
| ➤ FENCE PANELS           | ➤ PICKET FENCING        |
| ➤ CONCRETE PRODUCTS      | ➤ PEDESTRIAN SIDE GATES |
| ➤ CHESTNUT FENCING       | ➤ 5 BAR FIELD GATES     |
| ➤ AGRICULTURAL FENCING   | ➤ FIXTURES & FITTINGS   |
| ➤ TRADITIONAL CLOSEBOARD | ➤ TOOLS & EQUIPMENT     |

## NEXT DAY DELIVERY

ORDER ONLINE TODAY

WWW.MARTINCASHMORE.CO.UK





BEAUTIFUL MARQUEES  
FOR EVERY OCCASION

For more information call us or visit our website

**Tel. 01420 488477**

**[www.FourSeasonsMarquees.co.uk](http://www.FourSeasonsMarquees.co.uk)**

Jane Stockdale

## HOME COOKING

FOR SMALL OCCASIONS

Dinners, Luncheons, Buffets,  
Drinks Parties, Tea Parties,  
Children's Parties,

After Service Gatherings.  
Cooking for the freezer  
and individual dishes.

SPECIALISING IN  
CAKES AND CANAPES

**Please call 01252 723161  
or 07775696918**

[janestockdale01@hotmail.co.uk](mailto:janestockdale01@hotmail.co.uk)



## Food Affair Catering

Caterers for any occasion

Delicious food beautifully  
presented

Call Amanda on  
Tel: 0778 732 6982

Email: [foodaffair@hotmail.co.uk](mailto:foodaffair@hotmail.co.uk)

[www.food-affair.co.uk](http://www.food-affair.co.uk)

# ADVERTISE YOUR BUSINESS HERE

## CONTACT US

[magazine@benbinfro.org](mailto:magazine@benbinfro.org)

# Imagine Dry Carpet Cleaning

We have dry cleaned carpets & upholstery in 100's of homes

*"no soggy carpets or wet dog smell in your home"*

- Spills & spots - gone
  - Smells & odours - removed
  - Deep cleans & lifts carpet pile - like new
- FREE spot & stain remover with every clean*

*I also clean:*

***Upholstery, Hard & Wooden Floors***

Locally based family run business,

Call us for FREE on

**0800 180 4046**

Get Main Room Cleaned  
**save 50%**  
on all further rooms  
+ Free Stain Guard

**zero dry time**

Dry Carpet, Upholstery & Hard Floor Cleaners

## ***BENTLEY JOINERY*** ***Quality Purpose Made*** ***Joinery***

***Sliding Sash Windows, Doors, Staircases,***  
***Custom Made Furniture,***  
***Oak Barns Made to Your Own Design***

***Unit 2A, Blacknest Industrial Park***  
***Blacknest Road, Alton***  
***Hants GU34 4PX***

***Tel/Fax: 01420 22252***  
***Email: [info@bentleyjoinery.co.uk](mailto:info@bentleyjoinery.co.uk)***



## JT GARDEN SERVICES

LAWN MOWING

HEDGE CUTTING

GARDEN MAINTENANCE

LICENSED WASTE  
REMOVAL SERVICE

BENTLEY

01420 22764

07905297848

## Simon Sharpe

## S E Electrical

All electrical work carried out

Including

re-wiring, extra sockets, fault finding,  
lighting, *commercial, PAT Testing,*  
*Fixed Wire Testing*

Electric Car Charge Sockets

34 years' experience

*Contact Simon - 24 hour call out*

07720851398

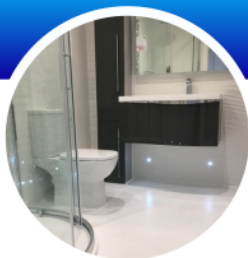
or

01420 477542

# aquamagic.plumbing

Your local plumbing & heating specialist

## 07795 295 293



- ★ Kitchens & bathrooms
- ★ Boiler installations
- ★ Unvented cylinders
- ★ Power flushing
- ★ Gas & oil
- ★ Underfloor heating



[www.aquamagic.plumbing](http://www.aquamagic.plumbing)



Plan your garden  
project with us early

Create your idyllic outdoor space with expert hard landscaping, driveways, patios, stone & brick walls, new lawns, drainage & full garden design projects.

Quality craftsmanship from a trusted local business.

SUPPORT  
*Local*  
BUSINESS

- Business established in 2012
- Member of Checkatrade since 2014
- £2m Public Liability insurance with AXA
- 5 year guarantee on workmanship
- Skilled & professional landscaping team
- Technical landscaping projects

 01428 606763 or 07798 811 941

 [www.1stadvancedlandscapes.co.uk](http://www.1stadvancedlandscapes.co.uk)

Whispers, Tower Road, Hindhead, GU26 6SL



## Andrew Wood

Heating and Plumbing Engineer



- BOILER CHANGES
- BOILER SERVICING
- POWER FLUSHING



- CENTRAL HEATING SYSTEMS
- GAS INSTALLATIONS
- GENERAL PLUMBING

Gas Safe No. 15316

For free estimates or advice telephone: **Bentley (01420) 22637**

## MICHAEL NEWSTEAD

Bathroom Installations • Small Plumbing Jobs • Plastering  
Tiling • Exterior and Interior Decorating

**30 Years' Experience**

Free quotations 07960 893369

michaelnewstead70@outlook.com

## *MJP Plumbing & Heating Ltd*

Helpful friendly plumber.

Will do all the jobs that need doing from a tap washer to refitting your bathroom.

Servicing to replacing boilers. **Just ask, no job too small!**

Works with all systems – heating and plumbing.

Gas Safe registered

Contact **Mike** on **07768 844276** or email [mike@mjpplumbing.com](mailto:mike@mjpplumbing.com)

## Simons Decorating Services

Interior & Exterior Painting & Decorating, including Wallpaper, Kitchen Respray  
and Resin Timber Repairs

Over 30 years' experience & fully Insured

07747 002 595

[simonsdecor@live.co.uk](mailto:simonsdecor@live.co.uk)

[www.simonsdecor.com](http://www.simonsdecor.com)

# R. A. CROFT JOINERY

*Bespoke  
Building & Joinery*



*We are proud to announce that we have now merged with  
Bentley Joinery*

- *Windows*
- *Bespoke Projects*
- *Staircase.*
- *Bespoke Furniture*
- *Doors*
- *Mouldings*

*Unit 2F, Blacknest Industrial Park, Blacknest Road, Alton,  
Hampshire GU34 4PX  
T: 01420 521152  
E: [info@racroftltd.co.uk](mailto:info@racroftltd.co.uk)*



**HAMMERTON**DESIGN

[www.hammertondesign.co.uk](http://www.hammertondesign.co.uk)

LOGO | PRINT | DIGITAL

GRAPHIC DESIGN SERVICES

## **BENTLEY**

**Website:** [www.bentleyparishcouncil.gov.uk](http://www.bentleyparishcouncil.gov.uk)

### **The Memorial Hall**

(Bentley Memorial Hall Association);  
Malcolm Macnaghten Tel. 01420 521291  
Email: [bentleymemorialhall@gmail.com](mailto:bentleymemorialhall@gmail.com)  
[www.bentleymemorialhall.org](http://www.bentleymemorialhall.org)

**Badminton Club:** Martin Fox 07710 035913  
[martin.fox62@yahoo.co.uk](mailto:martin.fox62@yahoo.co.uk)

### **District Council**

Phillip Davies  
Email [phillip.davies@easthants.gov.uk](mailto:phillip.davies@easthants.gov.uk)

### **Parish Council**

Chairman: Mr John Fuller 07768 558751  
[johnfuller@bentleyparishcouncil.gov.uk](mailto:johnfuller@bentleyparishcouncil.gov.uk)  
Clerk: Emma Wadey 07795 326539  
Email: [clerk@bentleyparishcouncil.gov.uk](mailto:clerk@bentleyparishcouncil.gov.uk)  
Facebook: @bentleyparishcouncil  
Instagram: @bentley\_parish\_council  
Bentley Memorial Hall, Hole Lane,  
Farnham GU10 5LP  
Parish Office Hours  
Monday to Thursday 9am to 3pm

### **Bentley School**

Headteacher: Vicky Hallett 01420 525010  
Email: [bentleyschoolptfa@gmail.com](mailto:bentleyschoolptfa@gmail.com)

### **Childcare**

Dottie Tots: Karen 07387 576 307

### **Fête Committee**

Chairman: Hugh Chissell, Greystones, Bentley  
01420 23117

### **Flower and Produce Show**

Contact: Pamela Green-Wright 07720 633 943

**Phoenix Group:** Linda Fuller 07891 825410  
email: [lindafuller1105@gmail.com](mailto:lindafuller1105@gmail.com)

### **Bentley Rec Ground**

Chair: Stephen Whowell  
[stephenhowell@bentleyparishcouncil.gov.uk](mailto:stephenhowell@bentleyparishcouncil.gov.uk)

### **Joint Parish Organisations**

**Care Group** (car service)  
Bookings: 07775 458873  
Secretary: 01420 590697

### **Girl Guides** (at Holybourne)

Lucy Yendell 01420 80560

### **2nd Bentley Scout Group General Enquiries:**

[admin@2ndbentleyscouts.org.uk](mailto:admin@2ndbentleyscouts.org.uk) 07974377736  
[www.2ndbentleyscouts.org.uk](http://www.2ndbentleyscouts.org.uk)

## **BINSTED**

**Website:** [binstedparishcouncil.com](http://binstedparishcouncil.com)

### **The Wickham Institute**

Chairman: Graham Jones 07825 201451  
email: [graham.jones666@gmail.com](mailto:graham.jones666@gmail.com)  
Bookings: Ann Mann 07854130955  
email: [annmann074@btinternet.com](mailto:annmann074@btinternet.com)  
[www.wickhaminstitute.co.uk](http://www.wickhaminstitute.co.uk)  
Treasurer: Andrew Croom Johnson - 23157

**County Councillor** Mark Kemp Gee - 01420  
563550, email - [marknkempgee@aol.com](mailto:marknkempgee@aol.com)

### **District Council**

David Ashcroft, 07966 511 868.  
Email [DavidAshcroft@easthants.gov.uk](mailto:DavidAshcroft@easthants.gov.uk),

### **Parish Council**

Chair: Dominic Hearne, 07886 581 906  
[d.hearne@binstedparishcouncil.org.uk](mailto:d.hearne@binstedparishcouncil.org.uk)  
Vice Chair: Jason Lock, 07500 898 387  
[jason@binstedparishcouncil.org.uk](mailto:jason@binstedparishcouncil.org.uk)  
Clerk Mike Mordecai  
Email: [clerk@binstedparishcouncil.org.uk](mailto:clerk@binstedparishcouncil.org.uk)  
Website: [Binstedparishcouncil.org.uk](http://Binstedparishcouncil.org.uk)  
Facebook: @Binstedparishcouncil

### **Binsted School**

Headteacher: Henry Jennings 01420 23200

### **Fête and Flower Show**

Matt Arrowsmith  
[thebinstedfete@gmail.com](mailto:thebinstedfete@gmail.com)

### **Tennis and Croquet Club Chairman:**

Secretary - Graham Jones 07825 201 451  
Website: <http://e-voice.org.uk/btcc/>

### **Growmore Club Secretary:**

[binsted.growmore.secretary@gmail.com](mailto:binsted.growmore.secretary@gmail.com)

### **Bentley and Binsted Police**

Police Rural Beat Officer: Jess Hornsby  
Alton Police 101

### **Binsted Cricket Club**

Chairman: John Dineen 01420 617814  
or mob: 07747878392

### **Binsted Football Club**

Secretary: Tim Winkworth [binstedfootball@gmail.com](mailto:binstedfootball@gmail.com)

### **Friends of Binsted School (FOBS)**

[fobs.binsted@gmail.com](mailto:fobs.binsted@gmail.com)

# February Services

**1st February**    **9:30am** Binsted Holy Communion & Children's Church  
**11am** Oakhanger Holy Communion  
**6pm** Bentley Praise

**8th February**    **9:30am** Bentley Morning Worship & Children's Church  
**11am** Froyle Holy Communion  
**6pm** Kingsley Praise

**15th February**    **9:30am** Froyle Morning Worship  
**11am** Kingsley Holy Communion  
**4pm** Messy Church at Froyle Church

**18th February**    **9:30am** Froyle Ash Wednesday Holy Communion  
*Ash Wednesday*  
**6:30pm** Binsted Ash Wednesday Holy Communion

**22nd February**    **9:30am** Bentley Holy Communion & Children's Church  
**11am** Binsted Morning Worship  
**6:30pm** Froyle Evensong

*Our 8am Binsted Holy Communion services will restart from Sunday 8<sup>th</sup> March.*

[www.benbinfro.co.uk](http://www.benbinfro.co.uk)  
[admin@benbinfro.org](mailto:admin@benbinfro.org)  
01420 23339

