

DECEMBER 2025 & JANUARY 2026

# Bentley & Binsted

PARISH MAGAZINE

## FEATURING

Brick Building	17
----------------	----

Christingle	18
-------------	----

Work From Home	21
----------------	----

Bentley Parish Council	30
------------------------	----

Sudoku	38
--------	----

## In this issue

<b>Children's Church .....</b>	<b>4</b>
Messy Church .....	4
<b>Upagear .....</b>	<b>5</b>
Four:Twelve.....	5
<b>Meet The Team - Gemma .....</b>	<b>6</b>
Alpha .....	7
<b>Christmas Services .....</b>	<b>9</b>
Thought For The Month.....	10
<b>Saturday Café.....</b>	<b>10</b>
Binsted Church Needs You .....	11
<b>Meet The Team - Lucinda.....</b>	<b>12</b>
Sudoku Answers.....	13
<b>Weather Statistics .....</b>	<b>14</b>
Christmas Fair Pax Hill.....	15
<b>Binsted Coffee Shop.....</b>	<b>15</b>
Binsted Annual Christmas Fair .....	16
<b>Brick Building .....</b>	<b>17</b>
Christingle.....	18
<b>The Real Nativity .....</b>	<b>19</b>
Carol Singing.....	20
<b>Work From Home .....</b>	<b>21</b>
Benefice Weekend Away .....	22
<b>Reverend Emmy Wilson .....</b>	<b>23</b>
Rowans.....	24
<b>Church Registers.....</b>	<b>25</b>
Binsted Parish Council .....	26
<b>Santa Is Back .....</b>	<b>27</b>
Bentley Memorial Hall .....	28
<b>Binsted School News .....</b>	<b>29</b>
Bentley Parish Council.....	30
<b>Advent Windows.....</b>	<b>32</b>
Wickham 100+ Club.....	33
<b>Bentley School News .....</b>	<b>34</b>
Thanksgiving Service Review.....	36
<b>Magazine Support .....</b>	<b>37</b>
Sudoku .....	38
<b>Advertisements.....</b>	<b>39</b>
Local Contact Details .....	55
<b>Services .....</b>	<b>56</b>

## Vicar of Bentley, Binsted and Froyle

Rev'd Matt Boyes (Day off - Friday)

matt@benbinfro.co.uk | 07469 270590

C/O Church Office, St Mary's Church, Bentley, GU10 5NA

**Website:** www.benbinfro.co.uk

### Assistant Priest

Christopher Ogilvie Thompson (Day off - Tuesday)

Tel: 07776 178690 | email: christopherot@me.com

### Licensed Lay Minister

Steve Fice (Day off - Friday)

Tel: 07876 767990 | email:steve.fice@btinternet.com

### Benefice Administrators

Lucinda Edwards and Gemma Ball

(admin@benbinfro.org) 01420 23339

### Honorary Assistant Minister

David Perryman, Treetops, Upper Froyle

Tel. 07710 699183 david.perrypeople@gmail.com

### Parishes Prayer Chain

Nick Carter 01420 489122 or nick.carter1945@outlook.com

### Pastoral Care Team

Nick Carter 01420 489122 or nick.carter1945@outlook.com

### Anna Chaplain

Fran Harrison annachaplain@benbinfro.co.uk

**Readers** – Harold Fish, 6 Bonners Field, Bentley. 22947

### Bentley: St Mary's Churchwardens:

Jill Kiely, 11 Broadlands Close, Bentley, GU10 5LE - 22735

Nick Caddick, Tanners, GU10 5NE - 23229

### Binsted: Holy Cross Churchwardens

Jonathan Bourne, Sunnycroft, GU34 4PF – 07766206278

### Parish Safeguarding Officers: Bentley and Binsted

Jill Kiely, Bentley Parish Safeguarding Officer

safeguardingbentley@benbinfro.co.uk

Susan Bourne, Binsted Parish Safeguarding Officer

safeguardingbinsted@benbinfro.co.uk

### Parish Magazine

Articles and Advertising: Any copy or advertising enquiries should be sent to Gemma Ball on the **5th** of the month, by email (magazine@benbinfro.org)

**Editor:** Benefice Team

**Designer:** Mike Hammerton

**Treasurer:** Steve Fice, 07876 767990 steve.fice@btinternet.com

**Distribution:** Bentley – Gill Thallon: gill.thallon@outlook.com

Binsted – Linda & John Kenward: lindawellsuk@yahoo.co.uk

What will 2026 hold for us? Perhaps you have a big family event, a holiday or a significant birthday planned. But as one year ends and another unfolds, we have a natural inclination to take stock and plan how the new year will be different. The one thing that doesn't change, is that we will take ourselves into it, with all our gifts, mistakes and hopes.

We live in uncertain times, with divided communities and political weakness. At the heart of things is the question of what story do we want to be part of? Do we believe that the human race is making inexorable progress, with technologies like AI providing tools to enable us to continue to grow? Or do we believe that we have come too far, too fast and have lost ourselves in the process? As a human race we take ourselves with our gifts, mistakes and hopes into the future too.

Many people are looking afresh at what has made us as a nation and there is a desire to preserve and celebrate what has shaped us. The historian, Tom Holland argues that Christianity, more than anything else, has had the biggest legacy and impact. Christian values such as serving others, all being equal before the law and the essential value of each human being made in the image of God seem so natural, but not all cultures see the world in the same way.

The Christmas story of the birth of Jesus is at the heart of this worldview and is worth re-examining. Humans, left to ourselves, are capable of the greatest achievements and the

greatest crimes. Inside every one of us is the capacity to do good and evil. Our heroes are all flawed. Our mistakes, and the shame we carry, spoil the triumphs and peace we seek.

If our greatest need is to have good laws, Jesus would have come as a legislator. If we need education, he would have been a teacher. He was both of these of course, but his mission was summed up by the message of the angels to the shepherds, "A Saviour has been born." We need a saviour, because we need saving from ourselves. The shame we carry needs to be taken from us and carried by someone else, so that we are free. We need someone to stand in our place in order to escape the penalty of the wrong we have done.

In Jesus, God steps into his world and lives as one of us. Experiencing life in all its complexity, glory and infamy. He steps in to lift off from us all that chains us and traps us. He knows what we face and says "follow me" and "I will give you life in all its fullness."

May I invite you to explore for yourself what this means. We have an Alpha course starting on 8<sup>th</sup> January at 7pm and that is the perfect place to explore and bring your questions. May I also invite you to our busy series of Christmas services, each is different in style and we hope you will find one that suits you.

May you have a wonderful Christmas and a fulfilling New Year

Matt Boyes

*Rector of Bentley, Binsted and Froyle*

# Children's Church in December/January



A friendly and fun group for children during the Sunday service. With stories, games, songs, and crafts, children learn about God in a way that's easy to understand and enjoy. All ages are welcome – come and join us!

## 7th December

9:30am Holy Cross Binsted

## 14th December

9:30am St Mary's Bentley

## 28<sup>th</sup> December

**Christmas Holidays - No Children's Church**

## 4th January 2026

**Christmas Holidays - No Children's Church**

## 11th January 2026

9:30am St Mary's Bentley

## 25th January 2026

9:30am St Mary's Bentley

[admin@benbinfro.org](mailto:admin@benbinfro.org)

**FREE**



## Sunday 18th

## January 2026

**Wickham Institute, Binsted**

**4-6pm**

**Supper included** 🍴



Messy Church is a brilliant afternoon of fun, crafts, games, messy play, singing and stories. The whole family are invited and there is something for everyone. Come along, we'd love to meet you!

**Messy Church, 3<sup>rd</sup> Sundays, 4-6pm.**

It's free and we even sort supper for you!

[admin@benbinfro.org](mailto:admin@benbinfro.org)





# UPAGEAR

## Youth group

School years 7+

A welcoming and fun space for young people to gather, to build friendships, and explore Christian faith and values with significant snacks!

Thursday 11th December – 5–6:30pm

Thursday 15th January – 5–6:30pm

Thursday 29th January – 5–6:30pm

Bentley Church Hall

[admin@benbinfro.org](mailto:admin@benbinfro.org)

# four: twelve

YOUTH CLUB



**WHO? OPEN TO YOUNG PEOPLE IN SCHOOL YEARS 4–6.**

**WHEN? FRIDAY 5TH DECEMBER – 5–6:30PM  
FRIDAY 9TH JANUARY – 5–6:30PM  
FRIDAY 23RD JANUARY – 5–6:30PM**

**WHERE? BENTLEY SCHOOL SPORTS HALL.**

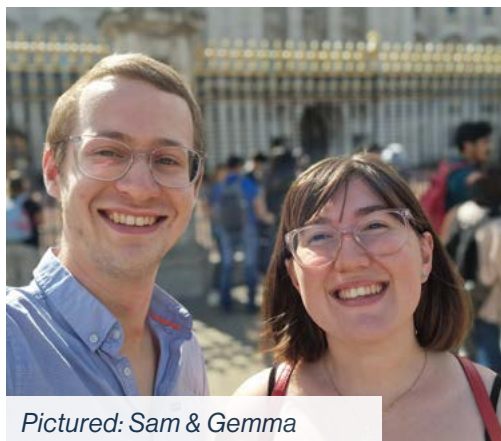
**WHAT? FUN & GAMES, SHORT BIBLE TEACHING, GROUP ACTIVITIES, TUCK SHOP.**

[admin@benbinfro.org](mailto:admin@benbinfro.org)

1 Timothy 4:12 – “Do not let anyone treat you as if you are unimportant because you are young. Instead, be an example to the believers with your words, your actions, your love, your faith, and your pure life.”

# Meet the Team

Gemma



*Pictured: Sam & Gemma*

## 1. Quick-fire questions!

**Tea or coffee?** Tea, with blue milk!

**Winter or summer?** Spring, when all the flowers start to come out

**Sunrise or sunset?** Sunrise

**Sweet or savoury?** Sweet

**Apple or android?** Android

**Air guitar or air drums?** Air drums

**Movies or books?** Movies

## 2. What's your favourite way to start the day?

**My favourite way to start the day is** very slowly, which doesn't happen very often! Besides that, I like to have a nice hot cup of tea and a treat for breakfast with my family.

## 3. Tell us more about your role at Benbinfro and how you ended up here?

I am one of two church administrators; I get to work with the lovely Lucinda! I didn't start off at BenBinFro as church admin, you will probably recall I was the Youth Worker here. When Yann hired me back in 2019, I was running youth groups, children's church, spending lots of time in our schools and filming MANY silly videos with Yann. Lots has changed in 6 years; my husband Sam is now Pastor at a church in Portsmouth so we moved there at the same time we had our little Lydia in 2024. I was actually planning to resign after

maternity leave but I really wanted to come back to my job which feels like a home from home, and so here I am. I wear many hats in my job - I work in the church office, and from home, to pull the parish magazine, social media and website together. I also keep the benefice running smoothly with my colour-coded rotas and spreadsheets, and I look after the safeguarding admin which keeps our church family safe and heard through DBS checks and safeguarding training. However, my main skill is to maintain the printer (if you know, you know!) – mostly by shouting at it, and if that doesn't work, call the engineers.

## 4. What things in your role do you look forward to the most?

Everyone in the team knows I am filled with joy with a new spreadsheet, a new initiative, or Christmas! I love to bring colour and life to what might seem a boring job to some, but really it gives me such joy to know other people's lives are easier because I can do some organising. I do also love to design lots of our church comms, especially the Christmas card, and to communicate our Christian faith through Canva. I do also love to see people in the church office, if I can be of any help or be a listening ear, please pop in and say hello!

**5. Outside of parish life, what things do you get nerdy or excited about?**

I am currently studying for an MA in Biblical Studies – I must be mad but I'm really enjoying it. Other than that, I am a huge McFly fan, I went to see McFly vs Busted in October which was so good. I get very nerdy about space, did you know there's a thing called the potato radius?! And I love to go to the cinema.

**6. What's your most embarrassing moment?**

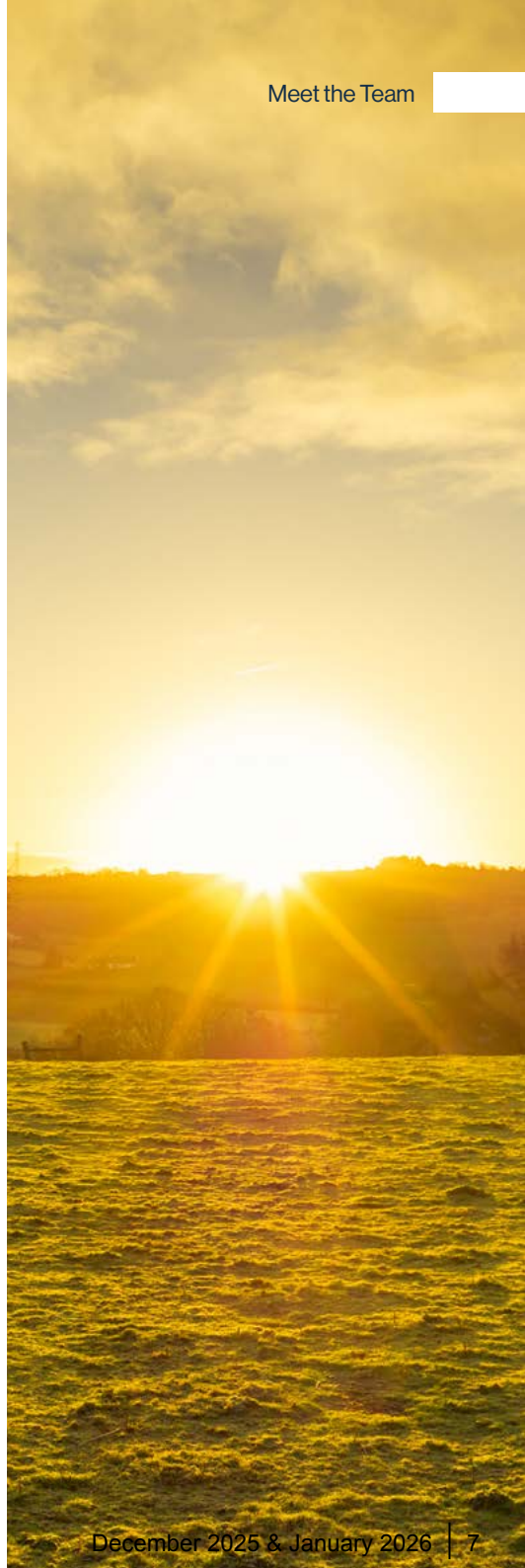
I spend my life trying to avoid anything embarrassing so I honestly can't think of anything to share!

**7. If you could invent one thing to make your life better, what would you invent and why?**

I wish I could invent a button that transports you to bed instantly. When you're ready to go to bed, but can't be bothered to get up, get in pjs, brush your teeth etc. the button will do all that and you will be in bed without the faff.

**8. To finish, what is your go-to bible verse when you need some encouragement, and how can it help encourage others?**

Psalm 23 – this psalm brings me so much comfort and encouragement that God is always with me and watching over me when life seems dark and tricky. I hope this brings you as much comfort as it does to me, with God you have all you need, he will lead you to green pastures to rest and to still waters to be refreshed. When you feel like you're walking through a dark valley, God will be there to protect you and keep you safe.



# *Unpack the Christian faith together.*

*Try Alpha.*

**Starting Thursday 8<sup>th</sup>  
January 2026**

Email [admin@benbinfro.org](mailto:admin@benbinfro.org)  
for more info

[alpha.org.uk](http://alpha.org.uk)

**Alpha**

The Alpha logo consists of a large, stylized red question mark. At the bottom left of the question mark is a red circle containing the word "Alpha" in white.



# Christmas services

## **Saturday 29<sup>th</sup> November**

6:30pm Froyle Advent by Candlelight

## **Sunday 14<sup>th</sup> December**

6:30pm Nine Lessons & Carols at Froyle

## **Sunday 21<sup>st</sup> December**

4pm Christingle at Kingsley

6pm Carol Service at Binsted

## **Monday 22<sup>nd</sup> December**

7:30pm Carols at The Star Inn, Bentley

## **Tuesday 23<sup>rd</sup> December**

6pm Real Nativity at Froyle

## **Christmas Eve**

4pm Christingle at Bentley

5:30pm Crib Service at Froyle

10pm Froyle Late Night Holy Communion

10pm Oakhanger Late Night Holy Communion

11:30pm Bentley Midnight Holy Communion

11:30pm Binsted Midnight Holy Communion

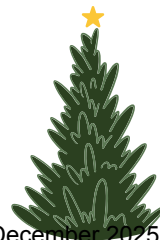
## **Christmas Day**

9:30am Bentley Holy Communion

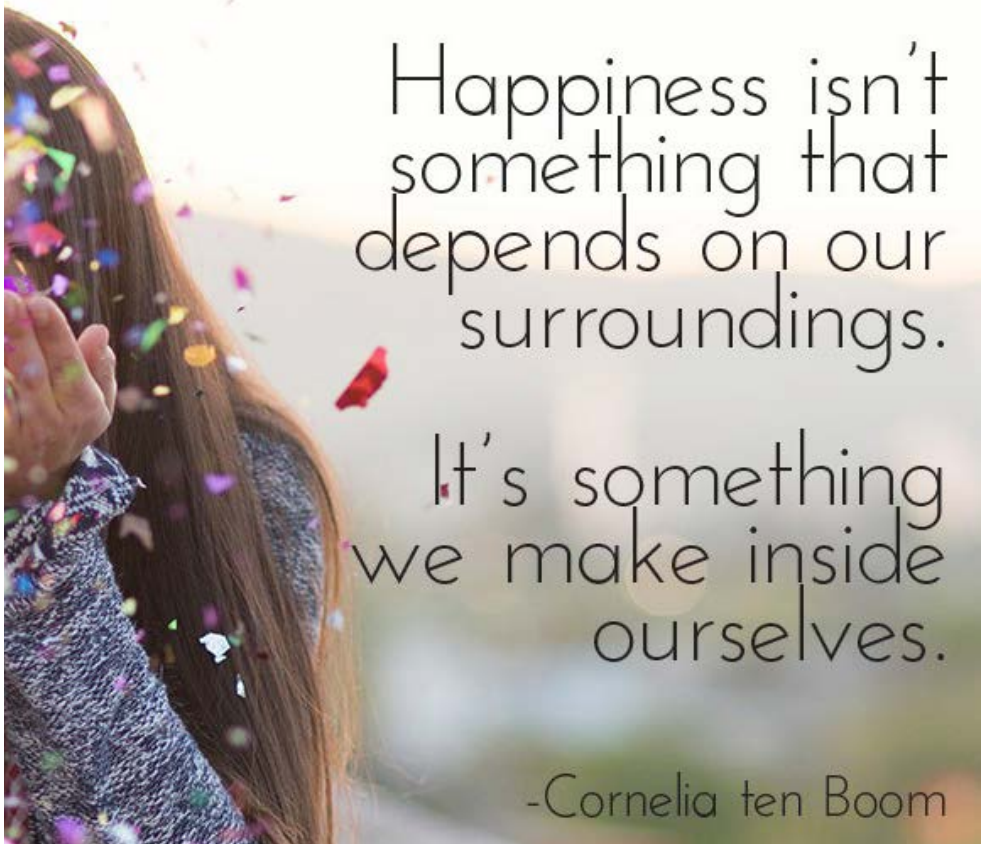
9:30am Binsted Holy Communion

11am Froyle Holy Communion

11am Kingsley Holy Communion







Happiness isn't  
something that  
depends on our  
surroundings.

It's something  
we make inside  
ourselves.

-Cornelia ten Boom



# Saturday Café

**Bentley Memorial Hall**

**Saturdays 10.30am – 12.30pm**

**Coffee, tea and cakes**



We look forward  
to seeing you for  
a catch up and  
lively chat.



On most Saturdays.  
Look out for the  
banner outside the  
Hall.



# Binsted Church needs your help.

**Help preserve the building for generations to come.**

**Become a Friend of Binsted Church and...**

**HELP** provide essential funding for the maintenance of this historic building

**HELP** preserve the church for generations to come

**HELP** retain the character and heritage of our village

**Your friendship will enable you to...**

- ✦ Sponsor the cost of maintenance of the building and churchyard for a day, currently £35
- ✦ Choose a day of special significance to you and your family
- ✦ Have your chosen name and day recorded formally in a Book of Friends kept permanently displayed in the church, next to a lit candle

For more information and a sponsors' form, please visit [www.benbinfro.co.uk](http://www.benbinfro.co.uk) or scan the QR code.



The Friends of Binsted Church is under the jurisdiction of Binsted PCC, a registered charity in the name of The Parochial Church Council of the Ecclesiastical Parish of Holy Cross, Binsted, Hampshire.

# Meet the Team

Lucinda



Pictured: Lucinda

## 1. Quick-fire questions!

**Tea or coffee?** Tea (decaff or herbal!)

**Winter or summer?** Summer

**Sunrise or sunset?** Sunset

**Sweet or savoury?** Savoury

**Apple or android?** Android

**Air guitar or air drums?** Air drums

**Movies or books?** Movies

## 2. What's your favourite way to start the day?

Before I had children, it would be to go back to bed with a pot of tea and a crossword! Now it's a little bit less leisurely, but cooking up pancakes for breakfast is always a nice weekend treat.

In summer, I love to start the day outside.

## 3. Tell us more about your role at Benbinfo and how you ended up here?

I am one of the benefice administrators (a double act with Gemmal). I focus more on the 'Life Events' – so the Weddings, Baptisms and Funerals. But it can be a bit of everything!

I started in office support roles when I was 16, in the summer holidays to earn some pennies, and have had various roles over the years. After university and travelling, I then trained to be a TEFL teacher, went

and taught in Cambodia, before returning to do a PGCE in Primary Education. I taught for 10 years, in various roles in this country and overseas, but haven't done so since my 2nd born. I lost my job doing dull data stuff from home during Covid, and then a vacancy came up in the Church Office...the rest is history!

## 4. What things in your role do you look forward to the most?

I love the variety of the role, and after three and a half years, I'm still surprised by some requests we get! It's lovely to share in the joy of planning weddings and baptisms, but also to sometimes play a small part in helping families to say goodbye to loved ones.

The best bit is the team though – just lovely, caring and supportive people to work with.

## 5. Outside of parish life, what things do you get nerdy or excited about?

I love being outside, for walks or in my garden, especially in summer. I also love sewing and making things for the home. I recently discovered Willow Weaving, and I think I could get very nerdy about that!



6. What’s your most embarrassing moment?

When I was about 14, I had a haircut at my mum’s hairdressers. I’m not sure he was terribly experienced in my type of hair, and decided that short and with layers was the way to go. A week or so later, I was on my school French exchange trip, wandering round a French lycée, when a French teenage boy pointed directly at me, shouting, “ahh, Jackson Five!”. Mortified.

7. If you could invent one thing to make your life better, what would you invent and why?

A device to stretch out the weekends – they always go too quickly!

8. To finish, what is your go-to bible verse when you need some encouragement, and how can it help encourage others?

“Jesus Christ is the same yesterday, today and forever”. (Hebrews 13:8). In an ever-changing and often challenging world, that sense of foundation and steadfastness is something to hold on to.

“Give all your worries and cares to God, for he cares about you.” (1 Peter 5:7) It’s easy to get caught up in trying to solve my and everyone else’s troubles yourself, but there is freedom in handing it all over to God.

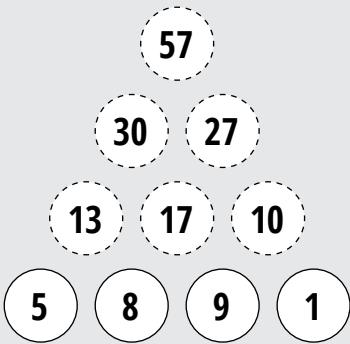
Sudoku November Answers

Sudoku MEDIUM

8	3	5	9	2	1	4	6	7
1	9	7	4	6	5	2	3	8
4	6	2	3	7	8	1	5	9
3	2	8	5	9	4	6	7	1
7	5	4	6	1	3	9	8	2
9	1	6	7	8	2	5	4	3
2	4	9	8	5	7	3	1	6
5	8	1	2	3	6	7	9	4
6	7	3	1	4	9	8	2	5

Number Pyramid

November's answers





# October 2025

WEATHER STATISTICS



## Temperature



### Daytime maximum

20.5°C (6<sup>th</sup>) to 12.4°C (15<sup>th</sup> & 29<sup>th</sup>)

13 days above 15°C and only 1 day above 20°C



### Nighttime minimum

-0.6°C (30<sup>th</sup>) to 13.8°C (3<sup>rd</sup>)

7 nights above 10°C and 1 night below 0°C

## Rainfall



### Total for month

3.81 inches (96.8 mm) over 19 days



### Wettest days

0.85 inches (21.6 mm) (20<sup>th</sup>)

## Wind



### Dominant wind direction

West South West



### Maximum gust

31 mph (4<sup>th</sup>)

*However, the data shows a figure of 116 mph  
@ 23.30 on the 25th, but this figure does not look right!!*

*Parish Weatherman*





## **BINSTED COFFEE SHOP**

**@ THE WICKHAM INSTITUTE**

(Church Street, Binsted GU34 4NX)



**WEDNESDAYS 10am – 12noon (during term-time)**

**PLEASE COME ALONG AND JOIN US**

**COFFEE, TEA and HOME-MADE CAKES**

**ALL WELCOME**

**(CHILDRENS' TOYS AVAILABLE)**



**FREE WI-FI**



**SAVE THE DATE...**

Saturday 6th December 2025  
2.00pm – 4.30pm

# Binsted's Annual Christmas Fair

*In the Wickham Institute and Holy Cross Church, Binsted*

More volunteers, donations and ideas needed.  
Please get involved with this community event.  
Thank you. Contact Angela – [angela1dunne@sky.com](mailto:angela1dunne@sky.com)

Lots of stalls both inside the Wickham Hall and the Church  
and the sale of the famous Christmas Wreaths

Santa's Grotto will be inside Binsted Church

New this year ...

A brick building competition for children & adults





# BRICK

## BUILDING COMPETITION



**6<sup>TH</sup> DECEMBER**  
**BINSTED FAIR**  
**GU34 4NX**  
**2PM - 4.30PM**

*Judged by*

**NO PRE BOOKING NECESSARY**

**ICONIC**  
**BRICKS**

ENGAGE, INSPIRE, BUILD

# Christingle

## ● **Sunday 21st December**

All Saint's, Kingsley

4pm

## ● **Christmas Eve**

St Mary's Church, Bentley

4pm



Come along for a family-friendly, festive hour of fun where we will be singing your favourite Christmas carols and learning the *Reason for the Season*.

You even get to take home your very own Christingle orange! Don't know what that is? Come along to find out...

We're looking forward to seeing you there





# The Real Nativity

**St Mary's Church, Froyle**  
**Tuesday 23<sup>rd</sup> December**  
**6pm**



Come and join us and follow the Christmas story from the appearance of the Angel Gabriel to the birth of Jesus.

Wrap-up warm, wear appropriate footwear for a field and bring a torch. There'll be warm drinks and mince pies to get things started. There's plenty of parking, follow the road signs in Froyle and the Traffic Marshall's directions to the car park. It's short walk from the car park to the venue.

If you can be with us from 5:45pm, we can start promptly at 6pm and you'll be away by 7pm.

It will be an evening to get your Christmas off to a great start and a night to remember.





# Carol Singing

**Sunday 14th December**

**6:30pm** Nine Lessons and Carols  
at St Mary's Church, Froyle

**Sunday 21st December**

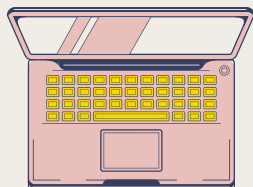
**6pm** Carol Service at Holy Cross Church,  
Binsted

**Monday 22nd December**

**7:30pm** Bentley Village Carol Singing  
at The Star Inn

# Work from home

## at Bentley Church Hall



Come along to our 'working from home' sessions at Bentley Church Hall. We will have structured days with quiet times for focussed work through the day and the opportunity for a social lunch to beat the loneliness, share ideas, and cheer each other on. We have two sessions in both December and January!

"The work from home session was really well organised, with 'quiet and chatty' sections and tea breaks and lunch at set times. It was lovely to meet new people in the breaks, nicer than working alone. There was no cost and no need to book. Lots of desks were available and each had a plug socket and comfortable chair. The hall is a beautiful building and there are lovely views to the garden at the back, which was an added bonus! None of the distractions of home were present which meant that I got lots of work done and left after lunch ready to tackle the next part of my day."

Jenny



Drop in  
9am - 5pm

Dates:  
2nd December  
16th December  
13th January  
27th January

Bentley Church Hall  
Church Lane  
GU10 5NA

chat to Becky or Gemma  
or email [admin@benbinfo.org](mailto:admin@benbinfo.org) for  
more info

FREE soup lunch or order  
from Bentley Stores

Structured but flexible  
work days

Tea & coffee

WI-FI

Warm space in winter

# Benefice Weekend Away



As a church, we are so excited to be going to Horsley Towers, DeVere Hotel, in March for a weekend away! Church doesn't just happen on Sundays, we have lots going on around our parishes throughout the week, but this is an event we are all really looking forward to. We will be staying for 2 nights with lots planned including teaching from **Emmy Wilson** (bio right), worship for everyone, and some Saturday night entertainment – to be planned! Food and accommodation is included in the cost, as well as access to the leisure facilities (gym, sauna, pool).

There are some beautiful walks around the hotel grounds too.

We are already 2/3 full, so if you would like to come please let us know as soon as you can!

Email [admin@benbinfro.org](mailto:admin@benbinfro.org) for questions and a booking form.

**£245**  
per adult

**Horsley Park  
Ockham Road South  
East Horsley  
Surrey  
KT24 6DU**

**Kids go  
FREE!**

# Reverend Emmy Wilson

Emmy Wilson has lived in London for over 50 years. She spent 14 years training and practising as both a State Registered Nurse and a Registered Sick Children's Nurse, culminating in 4 years nursing those affected by HIV and AIDS.

In 1985 Emmy ended her nursing career when invited to join the staff at Holy Trinity Brompton. She began to help those in society whose lifestyles made them most vulnerable to this disease, working with people suffering from AIDS, as well as those caught up in prostitution, drug addiction, alcoholism and homelessness.

Emmy became involved in Prison work in 1991, helping as a part-time volunteer with the Chaplaincy at Holloway Prison, once the largest women's prison in London. In December 1994 she began taking teams to other prisons in the UK to introduce Alpha.

Since 1995 Emmy has visited prisons and spoken about her work at Alpha conferences and Alpha Prison Trainings all around the world, including Scotland, Wales, Isle of Man, Ireland, Rwanda, Zambia, South Africa, Zimbabwe, Ghana, Kenya, Sierra Leone, Uganda, Botswana, Trinidad and Tobago, Grand Turk, Nicaragua, Guatemala, Colombia, Panama, Argentina, Brazil, Fiji, Australia, New Zealand, USA,



Canada, France, Belgium, Denmark, Sweden, Switzerland, Austria, Germany, Russia, Poland, Malaysia, Singapore, Indonesia, Hong Kong, India, China, Japan, Taiwan, and Guam

She was ordained by Bishop Johnson Gakumba in Northern Uganda in 2011 as Chaplain to the Worldwide Prisons, and is based in London.

She has become involved in the fight against human trafficking - having visited brothels in Calcutta and Mumbai - and is passionate not only to raise awareness about this vital work, but to help those enslaved to find freedom.

She retired from HTB's staff on her 70th birthday in February 2023, but is keen to continue to serve the wider Church internationally whenever the opportunities arise, having been appointed as a Global Ambassador for Alpha.



**The Rowan tree (*Sorbus aucuparia*), often known as Mountain Ash due to its preference for upland environments and its visually similar leaves, is a deciduous tree deeply woven into the natural and cultural fabric of Northern Europe. Despite its common name, the Rowan is not related to the true Ash (*Fraxinus*) but rather belongs to the Rosaceae family, making it closer to roses and apples. This elegant, slender tree typically reaches heights of up to 15 metres and boasts a life span that can exceed a century. And despite its name, it is easy to find growing wild round here; far from any mountains.**

In spring and early summer, the tree is adorned with dense, flat clusters of creamy-white, heavily scented flowers. These flowers are hermaphrodite, containing both male and female parts, and are highly attractive to various pollinating insects. The leaves are compound and pinnate, generally featuring 11–15 serrated-edged leaflets on an alternating stem, which turn a distinctive rich red or yellow in the autumn.

The most iconic feature of the Rowan is its fruit. The pollinated flowers develop into heavy clusters of small, bright orange-red berries—technically pomes rather than true berries. These vivid fruits ripen in late summer and early autumn, providing a vital food source for wildlife, especially migrating birds such as waxwings, redwings, and other thrushes. These birds, by consuming the fruit and dispersing the seeds in their droppings, play a crucial role in the tree's reproduction. The Rowan's resilience is notable; it is one of



the hardest native broadleaves, able to survive on exposed sites and tolerating a variety of soils, from acidic to alkaline, which allows it to flourish at higher altitudes than many other trees.

The Rowan's practical value extends beyond its ecological role. The wood is dense, strong, and flexible, and was traditionally used for crafting tool handles, spindles, and walking sticks.

The bright berries, despite being quite bitter raw, are rich in vitamin C and have a long history of culinary use. When properly cooked, they transform into a tart but flavourful ingredient. Rowan berry jelly is a traditional accompaniment to game meat, and the fruit is also used to make jams, syrups, and various alcoholic beverages, including wines. Historically, the high vitamin C content led to the berries being made into a drink to combat scurvy. It is important to note that the seeds within the berries contain small amounts of a compound that can produce hydrogen cyanide, making proper preparation (like cooking and straining) essential for human consumption.

Few trees are as steeped in folklore and mysticism as the Rowan, leading to common names like 'Witch Wood' and 'Wicken Tree.' Throughout Celtic and Norse cultures, the Rowan was revered as a powerful tree of protection against evil spirits, witchcraft, and enchantment.

This reputation is thought to stem from a few physical characteristics: the bright red colour of the berries, which was considered the best defence against magic, and the tiny five-pointed star—a pentagram—visible on each berry opposite its stalk, and an ancient symbol of protection. It was customary to plant a Rowan near a dwelling or in a churchyard to ward off ill-will, and sprigs were often carried as personal talismans or hung above doorways and cattle sheds. In Norse mythology, the tree was associated with the god Thor, symbolizing strength and salvation. Even today, the enduring symbolism and striking beauty of the Rowan make it a popular ornamental tree in gardens and urban spaces, ensuring its captivating story continues to be told.

Ben Hamlin *Tree warden*  
Binstedtrees@gmail.com

# Church Registers

Bentley	
Thursday 9th October 2025	Funeral and Burial of Brian Read
Sunday 12th October 2025	Baptism of William Harrap
Tuesday 14th October 2025	Funeral of Anne Delaney
Binsted	
Saturday 4th October 2025	Wedding of Lucy Clarke and Amir Sadri
Froyle	
Sunday 19th October 2025	Baptism of Sloane Drake



# Binsted Parish Council

## New speed limit approved for Frith End

We're delighted that Hampshire County Council last month approved a long-sought speed reduction through Frith End village. The new 30mph speed limit will apply to a 1km stretch of Frith End Road, starting 30 metres of its junction with the A325 Farnham Road, and continuing some 40m beyond the Frith End sign at the northwest end of the village.

The speed limit reduction is part of a wider traffic-calming project that Hampshire Highways is developing for the route through Frith End and Blacknest, using developers' contribution funding from Whitehill-Bordon's expansion. Installing the new speed limit signage will be followed by a second phase of further safety improvements and signage changes.

Alison Melvin, lead for the parish council's Transport Working Group, is excited that - after years of work - this traffic calming project is finally getting underway. She explains:

*"Funding for Frith End-Blacknest traffic-calming was promised way back in 2012, as one of 9 local routes affected by Bordon & Whitehill's expansion. By 2023, traffic calming had been introduced on the other 8 routes ... but Hampshire Highways had become convinced that Frith End wasn't covered by these agreements! Fortunately, we tracked down the document proving that Frith End was included and - after further lobbying - secured ring-fenced funding and agreed the project scope in November 2024.*

*It's especially exciting to secure the 30mph speed limit. Speed reductions are hard to secure: they require the approval of the police and County Councillors, followed by a six-week public consultation. Huge thanks to all local residents who responded to this speed consultation (and have supported previous consultations); to our speed watch teams who generate vital local road data; and to the Highways teams working to implement the changes.*

*Of course there's still lots to be done to make our local roads safer. In Frith End and Blacknest, we still need the road to be resurfaced and its verges repaired, and to improve HGV signage, the various junctions, and the safety of horse riders and cyclists. Elsewhere in the parish there are multiple areas where we're seeking to improve road safety, not least around the parish's two primary schools. All this will take time, but we'll keep you informed!"*

...27 ➔

**Meanwhile, can you spare  
a couple of hours per month to  
help the volunteers who run our  
parish's Transport Working Group?**  
To change the batteries on our Speed  
Indicator Devices; or to join the Binsted

village and Rowledge/Bucks Horn Oak  
community speed watch teams. If you  
can help, please phone Alison on 07851  
677057, or contact Mike our Clerk on  
[clerk@binstedparishcouncil.org.uk](mailto:clerk@binstedparishcouncil.org.uk)

# **BENTLEY SANTA IS BACK !!!!**

## **SUNDAY 21ST DECEMBER**

### **4PM ONWARDS**

**FULL ROUTE WILL BE ANNOUNCED  
EARLY DECEMBER**



Phyllis Tuckwell®  
Hospice Care

# BENTLEY MEMORIAL HALL



The perfect venue for celebrations, children's parties, meetings, exercise classes or exhibitions. The Hall is conveniently located in the centre of the village and has kitchen facilities and ample car parking.

Downstairs accommodates events for up to 100 people across two rooms.

Upstairs accommodates events for up to 20 people and is ideal for meetings.

## Your Hall Needs You



We are always looking for new Trustees to help run the Memorial Hall. Without new blood, the existing Trustees will wither away with age and the Hall will die.

If you want the Hall to continue to be part of village life, please consider becoming a Trustee.

For more information, please contact  
[bentleymemorialhall@gmail.com](mailto:bentleymemorialhall@gmail.com).

## The Bentley Memorial Hall 100+ Club

The winners of the November draw of the Bentley Memorial Hall 100+ Club are:

1st Mascha Tyrell 2nd Hew & June Pike 3rd Elizabeth Roach

**Congratulations to the winners.**

We welcome new members to the 100+ Club. Each number costs £12 per year (£1 per month) and there are three prizes every month! 50% of membership fees go to the 100+ Club prize fund while the remaining 50% goes to the Memorial Hall to help with our running costs. The more people who join the 100+ Club, the more money paid out in monthly prizes.

To join the 100+ Club, please e-mail a request to [bentleymemorialhall@gmail.com](mailto:bentleymemorialhall@gmail.com).

For room bookings and additional information about the Hall, please visit our website  
[www.bentleymemorialhall.org](http://www.bentleymemorialhall.org).



# School News - Binsted CE Primary

At Binsted we believe in the Christian values of Faith, Hope & Love.



## Great Plans at Binsted Primary School

**We have had a hugely successful response to our plea for support towards the Vicarage Garden project by The Holy Cross Church in Binsted. This is a fabulous chance to create something truly special in the parish and Binsted Primary is right at the heart of it. Horticulturalist Sally Turville has created a wonderful plan which includes: outdoor learning area, raised beds, worship and prayer space and an orchard. The school is collecting the details of people who can help support the project planned to begin this winter. If you, or anyone you know, would like to be involved please contact the school office on 01420 23200 and let us know.**

Sporting success is never far away at Binsted and the year has begun with Basketball tournaments for the Year 5/6 team and the Year 3/4 team at Amery and Eggar's. Both teams had lots of fun and really enjoyed building their skills. There

is a fantastic picture of our Year 3 and 4 team below. It was their first experience of competitive basketball and they had a great afternoon at Eggar's.

Other wonderful events at the school this Autumn Term have been Black History Day, a lovely Remembrance service at Holy Cross Church and our full calendar of Christmas events from the Young at Heart Tea Party to Carol singing at The Binsted Inn. It has been a wonderful Autumn Term. If you have or know anyone with a pre-school child please contact the school for a tour as we are looking forward to receiving applications for places for September 2026. The school also has spaces in KS2 at the moment- it is a wonderful opportunity to join a small rural school with the children at the heart of it. The Headteacher Henry Jennings would love to show you round the school to see if we would suit your child.



# Bentley Modified Neighbourhood Plan (2021-2028)



**Bentley**  
PARISH COUNCIL

## **As you may be aware, Bentley Parish Council have been working very closely with a group of residents to modify the original Bentley Neighbourhood Plan (2016).**

As the Government website states  
*"Neighbourhood planning gives communities direct power to develop a shared vision for their neighbourhood and shape the development and growth of their local area. Neighbourhood planning provides a powerful set of tools for local people to plan for the types of development to meet their community's needs and where the ambition of the neighbourhood is aligned with the strategic needs and priorities of the wider local area".*

The Bentley modified plan includes five new policies on community facilities, local employment, traffic impact, green infrastructure, and dark skies. It also modifies policies from the original 2016 plan, such as the need for all development outside the settlement policy boundary to demonstrate a genuine community need.

We are very pleased to confirm that this has been adopted by East Hampshire District Council (EHDC). *"In accordance with the above regulations, and following a successful examination, East Hampshire District Council (EHDC) made the Bentley Modified Neighbourhood Plan (2021-2028)*

*on 17th July 2025. The Neighbourhood Plan now forms part of the statutory development plan for EHDC"* (Adam Harvey, Planning Policy Manager, EHDC)

A copy of the Bentley Neighbourhood Plan (2025) can be found at:

[FINAL-Bentley-Neighbourhood-Plan.pdf](#)  
[\(bentleyparishcouncil.gov.uk\)](#)

A big thank you to all those residents who gave their time and expertise to make this happen.

### **Chris Mace**

Parish Councillor

For further information on the parish council and parish events please go to [www.bentleyparishcouncil.gov.uk](#)

Follow us on Facebook and Instagram:  
[@bentleyparishcouncil](#)  
[@bentley\\_parish\\_council](#)  
[clerk@bentleyparishcouncil.gov.uk](mailto:clerk@bentleyparishcouncil.gov.uk)



**Bentley**  
PARISH COUNCIL

# **Bentley is under major housing development threat**

EHDC plans to launch a new Local Plan to approve sites for up to 12,000 new houses along the A31. Including, up to **900 new houses in Bentley**

We fear the consequences:

- Significant pressure on current infrastructure (e.g. roads, schools, sewage plants etc.)
- Damage to environment, rivers & biodiversity
- Ribbon development along the A31
- Loss of Jane Austen countryside and rural identity
- Planning blight

We believe these plans are *fundamentally* flawed and should be challenged

**Bentley Parish Council invites you to an open meeting at Bentley Memorial Hall on:**

**Thurs 11th December 2025 at 7.30pm**

Please come along and have your say!

# Village Advent Windows

## Bentley



### 🎄 Step Into the Spirit of Christmas with Bentley's Living Advent Calendar 🎄

Just like the traditional advent calendar that reveals a surprise each day, Bentley's version brings a touch of magic to our streets. From 1st to 24th December, a new Christmas window will be unveiled every day, each one lovingly decorated by a local. By Christmas Eve, there'll be 24 unique festive displays twinkling around the village for everyone to discover.

- ★ A new window is revealed daily from 1–24 December.
- ★ Once revealed, each window stays on display until 1st January, so you can catch up on any if you've missed them.
- ★ You can explore the trail using the printable Trail Map or follow along on the interactive Google Map, both available on the village WhatsApp group or via our Facebook page, from the end of November.
- ★ Visitors are invited to make a donation to Phyllis Tuckwell via - [justgiving.com/page/bentley-advent-trail](https://justgiving.com/page/bentley-advent-trail)

**Bentley Church will feature an Advent Window from the 4th December, step inside to discover it! 🏰**

## Binsted

Binsted village is hosting their annual Advent window displays again this year.

Binsted school are starting us off with window No. 1, and the Church porch will display window No. 24. A new window will be revealed each day through December for you to discover!

The displays are best seen when it is dark!

A map will be available.

**Binsted Church will feature an Advent Window from Christmas Eve! 🏰**





## THE WICKHAM INSTITUTE (VILLAGE HALL), BINSTED

[www.wickhaminstitute.co.uk](http://www.wickhaminstitute.co.uk)



### ***The Wickham Institute 100+ Club***

As promised, listed below are the lucky winners of the  
November 2025 draws:

#### **November 2025**

1<sup>st</sup> prize Alan Shelley

2<sup>nd</sup> prize Jean Stephens

3<sup>rd</sup> prize Julie Atkinson

Details of the December 2025 & January 2026 draws will appear  
in the next magazine.

Remember each number only costs £12 (£1 per month) and you  
have three chances to win each month!

50% of the monthly purchase price of each number goes in  
prizes and 50% to the running costs of The Wickham Institute.  
The more people that participate in the 100+ club, the more  
money that is paid out in monthly prizes.

If you would like to participate an application form can be  
obtained from Andrew Croom-Johnson on 01420 23157 or email  
a request to Andrew at [treasurer@wickhaminstitute.co.uk](mailto:treasurer@wickhaminstitute.co.uk)



**Book  
your place  
today!**

# Come along to our Year R open sessions

We are excited to announce the following sessions for any children looking to join us in September 2026:

- ◆ Thursday 23 October at 2pm
- ◆ Wednesday 5 November at 2pm
- ◆ Tuesday 11 November at 9.30am
- ◆ Friday 21 November at 2pm
- ◆ Wednesday 26 November at 7pm
- ◆ Wednesday 7 January at 9.30am

Each session lasts for approximately 1 hour.

Bentley provides the highest quality education which challenges and excites each and every child. Our children also benefit from after school clubs, wraparound care, forest explorers, residential visits, sporting fixtures and much, much more!

**Visit [bentleyprimaryschool.co.uk](https://bentleyprimaryschool.co.uk) for more information or to book a session.**



**Bentley CE Primary School**

School Lane, Bentley, Farnham GU10 5JP

[bentleyprimaryschool.co.uk](https://bentleyprimaryschool.co.uk)





# School News - Bentley CE Primary

At Bentley CE Primary School, we are passionate about caring for our wonderful world and helping our children understand how small actions can make a big difference. So far this year, our environmental work has continued to make an impact within our school community.

Empowering our pupils is a vital aspect of our eco work and this year our Year 6 Eco Council Leaders are leading three exciting new teams: Team Nature, Team Energy and Team Food. Each team is made of pupils from every class and has an important role to play in helping our school become more sustainable and environmentally aware. This term, our focus is on Team Energy, with preparations under way for our 'Switch Off Fortnight' this month – encouraging everyone to think about energy use at school and at home.

Another important aspect of our eco work is the wilding of our school grounds. Nature Guardians from Year 1 to Year 6 have been busy working with Madame Jones to continue to develop our beautiful pollinator garden, which is already flourishing. Our garden is not only going to be a beautiful habitat for wildlife, it will also help contribute to science as part of its inclusion in the National Education Nature Park. Funding from the South Downs National Park Renature fund has enabled us to begin the transformation of our garden but we are also very grateful for the kindness of members of our community as

well as Pepperpot Nursery for the generous donation of herbs. The next exciting step will be the addition of a large wooden gazebo, providing a peaceful place for children to sit, reflect, and enjoy the beauty of our garden.



Given the enormity of climate change, Bentley is grateful to be tackling it alongside other local schools as part of the Young ACAN Schools' Partnership, led by Madame Jones. This year's theme, 'Eating for Our Planet', explores how the food choices we make can help protect our world. In January, children from Bentley will be attending a special conference with pupils from other local

schools to learn about food and its impact on the planet. The conference delegates will then return to school empowered to teach their peers about food to help tackle the issue of food waste at lunchtimes.

It is wonderful to see the enthusiasm and care our pupils show for the environment. Their energy and creativity continue to inspire us all as we work together to make Bentley a greener, more sustainable school.

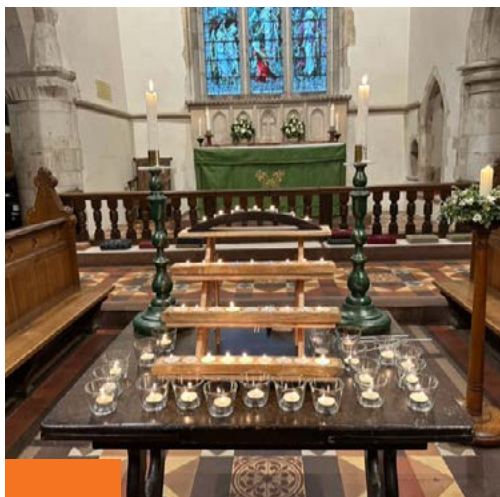
*Saturday 1<sup>st</sup> November 2025*

# Thanksgiving Service Review

On Saturday 1st November, All Soul's Day, we held a Service of Thanksgiving and Hope at St Mary's in Bentley.

It was a service designed to give space to those who have lost loved ones in weeks, months or years past - an opportunity to give **thanks** for their lives, for the joy they brought to us and the precious memories that remain, as well as a time to remember the hope that we all have in Christ Jesus – the **hope** of eternal life promised by Him to all of us who believe.

It often feels, with the death of a loved one, that a light has gone out, and our lives, especially at this time of year, can seem darker. And so during the service, interspersed with singing, reflection, words of comfort, and prayer, there was a time to come forward and light individual candles in memory of our loved ones. Nearly 70 people attended, and the warm glow of so many candles indeed brought physical light at the end of the service to the dark autumnal afternoon, as well as a lightness to the hearts of those who were there.



The feedback was positive, with many who came expressing gratitude for an opportunity to quietly reflect with thankfulness on the lives of their loved ones, and we hope that this service will become an annual fixture within the Benefice, to be at each church on a rotational basis.

# Bentley & Binsted

PARISH MAGAZINE

**The parish magazine for Bentley & Binsted is distributed to all the houses in our two villages. Most of the costs for producing the magazine come from advertising revenues, in 2024 we had a shortfall of over £3,000, which Bentley and Binsted PCCs need to cover.**

It costs us around £1 to produce each copy of the magazine and we publish 10 editions per year. If you feel that you are able to contribute towards the costs of producing the magazine, please contact the magazine treasurer at [bentleytreasurer@benbinfro.co.uk](mailto:bentleytreasurer@benbinfro.co.uk) or you can donate online by either:

- scanning the QR code below
- or go direct to our donations page at: <https://tinyurl.com/2tv9rtxu>.



Thank you for helping us keep the magazine as something for everyone in Bentley and Binsted.

# Sudoku Games

## Sudoku game EASY

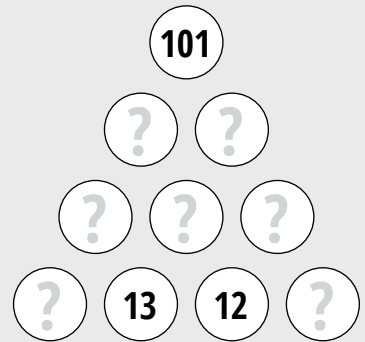
3		2					8	9
	6	8		5	2	7	3	4
		9						
4					7			
	8	3	2		1	5	9	
			5					2
						2		
2	1	4	7	8		3	5	
5	3					9		8

All you need to do is to fill in all of the squares in the puzzle so that each column of 9, each row of 9 and each 3 x 3 square includes every number from 1–9.

**No prizes** – just a huge amount of satisfaction!

### Number Pyramid

What are the missing numbers?



## Sudoku game MEDIUM

	8	4	2					
9	3		8	4				
	5	7						
6			4		1	7		
4				7				2
		5	6		2			9
						9	8	
				2	8		4	7
					3	2	1	

## Sudoku game HARD

3				6		2	5	
				5		1		3
		5	2	1		4	8	6
			3	8		5		
	3						4	
		2		4	5			
4	1	3		5	2	7		
8		7			4			
	5	6		7				4

Sudoku game answers shall be in the next edition of the Bentley & Binsted Parish Magazine

# CHARLES READ

& DAUGHTER

INDEPENDENT FUNERAL DIRECTORS & MEMORIAL MASONS



24 HOUR PROFESSIONAL  
& PERSONAL SERVICE

PRIVATE CHAPELS OF REST

PRE PAID & PRE ARRANGED FUNERALS

01420 83551

[www.charlesreaddaughter.uk](http://www.charlesreaddaughter.uk)

11-13 Turk Street, Alton, Hampshire GU34 1AG



NAFD Member



Your home  
Your care  
Your choice



**a** **alina** **homecare**  
*Care at Home*

Don't let the winter lead to loneliness.

We're here to give keep your loved one company in their own home.

Our professional friendly carers provide award winning respectful and compassionate care.

Regular visits, overnight and  
Live-in care available.

Let's chat...

**01252 227222**

[alinahomecare.com](http://alinahomecare.com)



**Top 20 UK  
Home Care  
Group Award  
2021 - 2025**





## Passion for home cooked & seasonal food

New menu

Large gluten free menu

Pizzas

Real ales, ciders, gins & large wine selection

Family & dog friendly

Large terrace & garden

Fortnightly quiz nights

Deluxe en-suite bedrooms

Experience our warm hospitality

The Street, Binsted, Alton, GU34 4PB

01420 446 454

[www.binstedinn.co.uk](http://www.binstedinn.co.uk)



# ADVERTISE YOUR BUSINESS HERE

**CONTACT US**  
[magazine@benbinfro.org](mailto:magazine@benbinfro.org)



## Spanish GCSE Tuition

Contact Juana  
[juana.garcia@live.co.uk](mailto:juana.garcia@live.co.uk)  
or 07957 695808

# Bentley Memorial Hall

The perfect venue for celebrations, weddings, children's parties, meetings, specialist classes or exhibitions.

Conveniently located in the centre of the village with kitchen facilities and ample car parking.

Main hall accommodating up to 100 people and two meeting rooms accommodating up to 60 people each. Main hall and one meeting room can be combined for larger events.

For more information and to book the hall, please go to the website [www.bentleymemorialhall.org](http://www.bentleymemorialhall.org)



Need a venue for a party  
or business meeting?

**Why not hire**

**Binsted Sports Pavilion?**

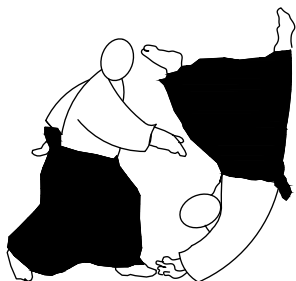
Available evenings, weekends  
and in office hours on Fridays

Located at Binsted Recreation Ground  
The hall has great views and free parking  
Cost is £50 for 4 hours  
Contact [clerk@binstedparishcouncil.org.uk](mailto:clerk@binstedparishcouncil.org.uk)  
to discuss your requirements





# KI AIKIDO



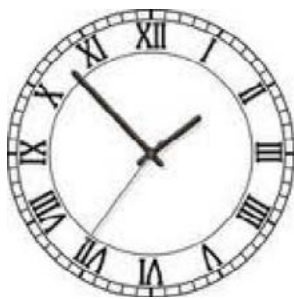
A TRADITIONAL JAPANESE MARTIAL ART

Using coordination of mind and body Ki Aikido teaches calmness, confidence and eliminates fear in everyday life

This powerful but non competitive art is suitable for everyone irrespective of age, sex or physical ability

Monday & Thursdays 7.30pm - 9.30pm  
Bentley Memorial Hall, Bentley, Nr ALTON

Enquiries: Email: [altonaikido@gmail.com](mailto:altonaikido@gmail.com)  
Mobile: 07717534643



M. W. SHAW – FARRINGTON

*Antique Clock Repairs  
& Restoration*

*House calls undertaken*

*All work guaranteed*

*Tel. Mr. M. W. Shaw*

*01420 588457*

## ADVERTISE YOUR BUSINESS HERE

## CONTACT US

[magazine@benbinfro.org](mailto:magazine@benbinfro.org)

**SMS: 07553 15 62 92**

I'm an Accredited Counsellor and Chartered Psychologist offering support for individuals and couples.

**COUPLES COUNSELLING: £70 PER SESSION**

**INDIVIDUAL COUNSELLING: £60 PER SESSION**

**Bookings: [epsychol.com](http://epsychol.com)**

Online or In-Person sessions (Kingsley)  
Dr Eliza Margrove MA PhD CPsychol MBACP



# PAX HILL



## Care Home



Provides the highest level of care, stunning accommodation with beautiful views and excellent facilities.

There are four separate care environments, enabling residents to share their lives with those of similar needs.



01420 525882 | [www.paxhill.co.uk](http://www.paxhill.co.uk)  
Bentley, Farnham, Surrey GU10 5NG





## Your Local Bentley Agent

Appointing Anderson Jones means working directly with owners Adrian and Candice, who build genuine relationships to understand your property goals. Enjoy a personal, local service backed by cutting-edge technology, standout marketing, and full support.

Follow us on social media @AJPropertyUK

w: andersonjones.co.uk | T: 01252 988488 | E: hello@andersonjones.co.uk



## THE WICKHAM INSTITUTE (Binsted Village Hall)



LOTTERY FUNDED

Having a party? Need a venue for a one-off meeting or conference?  
Looking for somewhere to hold a regular club/society meeting or class?

Why not consider hiring our lovely Grade II listed hall. It is light and airy, with a stage and a modern kitchen. The hall can seat up to 80 at tables or set up for conferences and meetings, and can accommodate up to 120 standing (Covid restrictions may apply).

We have very reasonable hire rates, why not contact us.



**For bookings or further information,  
please contact the booking secretary on  
01420 22388 or visit our website  
[www.wickhaminstitute.co.uk](http://www.wickhaminstitute.co.uk)**







**DOWNIE &  
GADBAN**

**Residential Conveyancing - Wills -  
Powers of Attorney - Probate -  
Commercial Property - Property  
Development - Dispute Resolution**

Instant conveyancing quotes available via our website  
[www.downieandgadban.co.uk](http://www.downieandgadban.co.uk)

We are here to help you.  
Call **01420 82879** or email us at  
**[info@downieandgadban.co.uk](mailto:info@downieandgadban.co.uk)**

**Why Choose Us?**

A traditional practice with a modern approach, putting its clients firmly at the heart of its business. We pride ourselves on a client-focused, solicitor-led service, ensuring that our clients get advice that is tailored to their individual needs, whether on routine residential property transactions or more complex and substantial matters. We have been serving generations of families in the Alton area since 1905.



review solicitors  
TRUSTED LAW FIRM



"EXCELLENT"  
4.9 IN 5 STARS | 101 REVIEWS



SOLICITORS  
REGULATION  
AUTHORITY

**[www.downieandgadban.co.uk](http://www.downieandgadban.co.uk)**

**Rockbourne House, 100 High Street, Alton, Hampshire, GU34 1ER**

Welcome to

**Mint Condition**

Your Fitness Experts



- . Private Personal Training
- . Pilates Classes
- . Injury Rehabilitation

**Contact us today to start your journey..**

**[www.mint-condition.com](http://www.mint-condition.com) | [gym@mint-condition.com](mailto:gym@mint-condition.com) | 01420 590590**

**Mint Condition, Steyne Farm, Binsted, Hampshire, GU34 4NU**

# ADVERTISE YOUR BUSINESS HERE

## CONTACT US

magazine@benbinfro.org



**We are a long established removal business, based near Alton.**

We can provide a package tailored to your exact requirements. Our service is professional and efficient, rivalling the larger companies on customer care and cost.

Free Quotations | House Clearance  
Packing Service | Secure, Dry Storage

Please call Adrian James at any time

**07703 683961**

Or email [adrian@bellemoor.co.uk](mailto:adrian@bellemoor.co.uk)

[www.bellemoor.co.uk](http://www.bellemoor.co.uk)

## Physiotherapy

In the centre of Bentley

by

**Pippa Blizzard**

Chartered Physiotherapist  
MCSP HCPC BAHT AACP

**07714 239644**

[physiotherapy@pippa-blizzard.co.uk](mailto:physiotherapy@pippa-blizzard.co.uk)

[www.pippa-blizzard.co.uk](http://www.pippa-blizzard.co.uk)



## Yoga Poses and Beyond (Part One)

A 6 week course starting on 19<sup>th</sup> January



[www.juanagarciayoga.co.uk](http://www.juanagarciayoga.co.uk)



# ART CLASSES FARNHAM



## Educational & Skill-Building

Whether you're an **absolute beginner** looking to **learn to draw and paint**, or an **intermediate** aiming to refine your skills, our **10 week Art Course** is a great way to enhance creativity and boost brain power.



## Well-Being & Relaxation

A calming and mindful practice that promotes overall well-being.



## Social & Fun

Meet like-minded people and make new friends.



Tel: 07936 646597 | Email: [carrie@creativeartclasses.com](mailto:carrie@creativeartclasses.com)  
[www.creativeartclasses.com](http://www.creativeartclasses.com)



## BEN MACDONALD ASSOCIATES

Chartered Architects & Surveyors

- Extensions
- Refurbishment
- One off Houses
- Farm Building Conversions
- Listed Building Alterations

Total design and management  
Service

Hoggatts House, Kingsley  
Bordon GU35 9NY  
Mob. 07511 994 062

email:  
[benmacdonald\\_architect@hotmail.com](mailto:benmacdonald_architect@hotmail.com)

## THORNE & CO

## TAXATION CONSULTANTS

**Friendly, efficient service to deal  
With your Accounts and  
Self-Assessment Returns**

**Initial Interview Free  
Evening appointments available**

**01420 22998**

**Email: [thornebentley@aol.com](mailto:thornebentley@aol.com)**



## AWARD WINNING LOCAL TOILET HIRE

Perfect for weddings, fetes and sporting events

Luxury Toilet Trailers  
Single Portable Loos  
Accessible WC's & Urinals  
Long Term Building Site Loos

01420 588 355  
hello@loos.co.uk  
www.loos.co.uk



Visit our  
showroom  
Unit 5, Aylesford  
Farm Buildings,  
Frye Road,  
GU24 4BY



### Our services-

- Manual and Power Sweeping
- Log Burners & Open Fires
- Birdsnest Removal
- CCTV Inspections and Reports
- Cage, Cap & Cowl Supply & Fit
- Rayburns & Agas
- Ingle Nooks
- Stove Maintenance
- Hetas Accredited Stove Installation'

T: 01420 549064

[www.stubbyschimneysweeping.co.uk](http://www.stubbyschimneysweeping.co.uk)

[www.stubbysstoveinstallations.co.uk](http://www.stubbysstoveinstallations.co.uk)

[info@stubbyschimneysweeping.co.uk](mailto:info@stubbyschimneysweeping.co.uk)



**MARTIN  
CASHMORE  
FENCING**

## FENCING & GATES SUPPLIER

☎ 01420 521 040

✉ SALES@CASHMOREFENCING.CO.UK



WE STOCK A LARGE RANGE OF PRODUCTS, INCLUDING :

- |                          |                         |
|--------------------------|-------------------------|
| ➤ FENCE PANELS           | ➤ PICKET FENCING        |
| ➤ CONCRETE PRODUCTS      | ➤ PEDESTRIAN SIDE GATES |
| ➤ CHESTNUT FENCING       | ➤ 5 BAR FIELD GATES     |
| ➤ AGRICULTURAL FENCING   | ➤ FIXTURES & FITTINGS   |
| ➤ TRADITIONAL CLOSEBOARD | ➤ TOOLS & EQUIPMENT     |

## NEXT DAY DELIVERY

ORDER ONLINE TODAY

**WWW.MARTINCASHMORE.CO.UK**



BEAUTIFUL MARQUEES  
FOR EVERY OCCASION

For more information call us or visit our website

**Tel. 01420 488477**

[www.FourSeasonsMarquees.co.uk](http://www.FourSeasonsMarquees.co.uk)

Jane Stockdale

## HOME COOKING

FOR SMALL OCCASIONS

Dinners, Luncheons, Buffets,  
Drinks Parties, Tea Parties,  
Children's Parties,

After Service Gatherings.  
Cooking for the freezer  
and individual dishes.

SPECIALISING IN  
CAKES AND CANAPES

**Please call 01252 723161  
or 07775696918**

[janestockdale01@hotmail.co.uk](mailto:janestockdale01@hotmail.co.uk)



## Food Affair Catering

Caterers for any occasion

Delicious food beautifully  
presented

Call Amanda on  
Tel: 0778 732 6982

Email: [foodaffair@hotmail.co.uk](mailto:foodaffair@hotmail.co.uk)

[www.food-affair.co.uk](http://www.food-affair.co.uk)

**ADVERTISE YOUR BUSINESS HERE**

**CONTACT US**

[magazine@benbinfro.org](mailto:magazine@benbinfro.org)



# Imagine Dry Carpet Cleaning

We have dry cleaned carpets & upholstery in 100's of homes

*"no soggy carpets or wet dog smell in your home"*

- Spills & spots - gone
  - Smells & odours - removed
  - Deep cleans & lifts carpet pile - like new
- FREE spot & stain remover with every clean*

*I also clean:*

***Upholstery, Hard & Wooden Floors***

Locally based family run business,  
Call us for FREE on

**0800 180 4046**



**zero dry time**

Dry Carpet, Upholstery & Hard Floor Cleaners

## ***BENTLEY JOINERY*** ***Quality Purpose Made*** ***Joinery***

***Sliding Sash Windows, Doors, Staircases,***  
***Custom Made Furniture,***  
***Oak Barns Made to Your Own Design***

***Unit 2A, Blacknest Industrial Park***  
***Blacknest Road, Alton***  
***Hants GU34 4PX***

***Tel/Fax: 01420 22252***  
***Email: [info@bentleyjoinery.co.uk](mailto:info@bentleyjoinery.co.uk)***

## JT GARDEN SERVICES

LAWN MOWING  
HEDGE CUTTING  
GARDEN MAINTENANCE  
LICENSED WASTE  
REMOVAL SERVICE  
BENTLEY

01420 22764

07905297848

## Simon Sharpe

### S E Electrical

All electrical work carried out  
Including  
re-wiring, extra sockets, fault finding,  
lighting, *commercial, PAT Testing,*  
*Fixed Wire Testing*  
Electric Car Charge Sockets

34 years' experience  
*Contact Simon - 24 hour call out*

07720851398

or

01420 477542

# aquamagic.plumbing

Your local plumbing & heating specialist

## 07795 295 293



- ★ Kitchens & bathrooms
- ★ Boiler installations
- ★ Unvented cylinders
- ★ Power flushing
- ★ Gas & oil
- ★ Underfloor heating



[www.aquamagic.plumbing](http://www.aquamagic.plumbing)



Plan your garden  
project with us early

Create your idyllic outdoor space with expert hard landscaping, driveways, patios, stone & brick walls, new lawns, drainage & full garden design projects.

SUPPORT  
*Local*  
BUSINESS

Quality craftsmanship from a trusted local business.

- Business established in 2012
- Member of Checkatrade since 2014
- £2m Public Liability insurance with AXA
- 5 year guarantee on workmanship
- Skilled & professional landscaping team
- Technical landscaping projects

 01428 606763 or 07798 811 941

 [www.1stadvancedlandscapes.co.uk](http://www.1stadvancedlandscapes.co.uk)

Whispers, Tower Road, Hindhead, GU26 6SL



## Andrew Wood

Heating and Plumbing Engineer



- BOILER CHANGES
- BOILER SERVICING
- POWER FLUSHING



- CENTRAL HEATING SYSTEMS
- GAS INSTALLATIONS
- GENERAL PLUMBING

Gas Safe No. 15316

For free estimates or advice telephone: **Bentley (01420) 22637**

## MICHAEL NEWSTEAD

Bathroom Installations • Small Plumbing Jobs • Plastering  
Tiling • Exterior and Interior Decorating

**30 Years' Experience**

Free quotations 07960 893369

michaelnewstead70@outlook.com

## *MJP Plumbing & Heating Ltd*

Helpful friendly plumber.

Will do all the jobs that need doing from a tap washer to refitting your bathroom.

Servicing to replacing boilers. **Just ask, no job too small!**

Works with all systems – heating and plumbing.

Gas Safe registered

Contact **Mike** on **07768 844276** or email [mike@mjpplumbing.com](mailto:mike@mjpplumbing.com)

## Simons Decorating Services

Interior & Exterior Painting & Decorating, including Wallpaper, Kitchen Respray  
and Resin Timber Repairs

Over 30 years' experience & fully Insured

07747 002 595

[simonsdecor@live.co.uk](mailto:simonsdecor@live.co.uk)

[www.simonsdecor.com](http://www.simonsdecor.com)

# R. A. CROFT JOINERY

*Bespoke  
Building & Joinery*



*We are proud to announce that we have now merged with  
Bentley Joinery*

- *Windows*
- *Bespoke Projects*
- *Staircase.*
- *Bespoke Furniture*
- *Doors*
- *Mouldings*

*Unit 2F, Blacknest Industrial Park, Blacknest Road, Alton,  
Hampshire GU34 4PX*



**HAMMERTON**DESIGN

[www.hammertondesign.co.uk](http://www.hammertondesign.co.uk)

LOGO | PRINT | DIGITAL

GRAPHIC DESIGN SERVICES



## **BENTLEY**

**Website:** [www.bentleyparishcouncil.gov.uk](http://www.bentleyparishcouncil.gov.uk)

### **The Memorial Hall**

(Bentley Memorial Hall Association);  
Malcolm Macnaghten Tel. 01420 521291  
Email: [bentleymemorialhall@gmail.com](mailto:bentleymemorialhall@gmail.com)  
[www.bentleymemorialhall.org](http://www.bentleymemorialhall.org)

**Badminton Club:** Martin Fox 07710 035913  
[martin.fox62@yahoo.co.uk](mailto:martin.fox62@yahoo.co.uk)

### **District Council**

Phillip Davies  
Email [phillip.davies@easthants.gov.uk](mailto:phillip.davies@easthants.gov.uk)

### **Parish Council**

Chairman: Mr John Fuller 07768 558751  
[johnfuller@bentleyparishcouncil.gov.uk](mailto:johnfuller@bentleyparishcouncil.gov.uk)  
Clerk: Emma Wadey 07795 326539  
Email: [clerk@bentleyparishcouncil.gov.uk](mailto:clerk@bentleyparishcouncil.gov.uk)  
Facebook: [@bentleyparishcouncil](https://www.facebook.com/bentleyparishcouncil)  
Instagram: [@bentley\\_parish\\_council](https://www.instagram.com/bentley_parish_council)  
Bentley Memorial Hall, Hole Lane,  
Farnham GU10 5LP  
Parish Office Hours  
Monday to Thursday 9am to 3pm

### **Bentley School**

Headteacher: Vicky Hallett 01420 525010  
Email: [bentleyschoolptfa@gmail.com](mailto:bentleyschoolptfa@gmail.com)

### **Childcare**

Dottie Tots: Karen 07387 576 307

### **Fête Committee**

Chairman: Hugh Chissell, Greystones, Bentley  
01420 23117

### **Flower and Produce Show**

Contact: Pamela Green-Wright 07720 633 943

**Phoenix Group:** Linda Fuller 07891 825410  
email: [lindafuller1105@gmail.com](mailto:lindafuller1105@gmail.com)

### **Bentley Rec Ground**

Chair: Stephen Whowell  
[stephenhowell@bentleyparishcouncil.gov.uk](mailto:stephenhowell@bentleyparishcouncil.gov.uk)

### **Joint Parish Organisations**

#### **Care Group** (car service)

Bookings: 07775 458873  
Secretary: 01420 590697

### **Girl Guides** (at Holybourne)

Lucy Yendell 01420 80560

### **2nd Bentley Scout Group General Enquiries:**

[admin@2ndbentleyscouts.org.uk](mailto:admin@2ndbentleyscouts.org.uk) 07974377736  
[www.2ndbentleyscouts.org.uk](http://www.2ndbentleyscouts.org.uk)

## **BINSTED**

**Website:** [binstedparishcouncil.com](http://binstedparishcouncil.com)

### **The Wickham Institute**

Chairman: Graham Jones 07825 201451  
email: [graham.jones666@gmail.com](mailto:graham.jones666@gmail.com)  
Bookings: Ann Mann 07854130955  
email: [annmann074@btinternet.com](mailto:annmann074@btinternet.com)  
[www.wickhaminstitute.co.uk](http://www.wickhaminstitute.co.uk)  
Treasurer: Andrew Croom Johnson - 23157

**County Councillor** Mark Kemp Gee - 01420  
563550, email - [marknkempgee@aol.com](mailto:marknkempgee@aol.com)

### **District Council**

David Ashcroft, 07966 511 868.  
Email [DavidAshcroft@easthants.gov.uk](mailto:DavidAshcroft@easthants.gov.uk),

### **Parish Council**

Chair: Dominic Hearne, 07886 581 906  
[d.hearne@binstedparishcouncil.org.uk](mailto:d.hearne@binstedparishcouncil.org.uk)  
Vice Chair: Jason Lock, 07500 898 387  
[jason@binstedparishcouncil.org.uk](mailto:jason@binstedparishcouncil.org.uk)  
Clerk Mike Mordecai  
Email: [clerk@binstedparishcouncil.org.uk](mailto:clerk@binstedparishcouncil.org.uk)  
Website: [Binstedparishcouncil.org.uk](http://Binstedparishcouncil.org.uk)  
Facebook: [@Binstedparishcouncil](https://www.facebook.com/Binstedparishcouncil)

### **Binsted School**

Headteacher: Henry Jennings 01420 23200

### **Fête and Flower Show**

Matt Arrowsmith  
[thebinstedfete@gmail.com](mailto:thebinstedfete@gmail.com)

### **Tennis and Croquet Club Chairman:**

Secretary - Graham Jones 07825 201 451  
Website: <http://e-voice.org.uk/btcc/>

### **Growmore Club Secretary:**

[binsted.growmore.secretary@gmail.com](mailto:binsted.growmore.secretary@gmail.com)

### **Bentley and Binsted Police**

Police Rural Beat Officer: Jess Hornsby  
Alton Police 101

### **Binsted Cricket Club**

Chairman: John Dineen 01420 617814  
or mob: 07747878392

### **Binsted Football Club**

Secretary: Tim Winkworth [binstedfootball@gmail.com](mailto:binstedfootball@gmail.com)

### **Friends of Binsted School (FOBS)**

[fobs.binsted@gmail.com](mailto:fobs.binsted@gmail.com)



# December/January

*You can find our Christmas services inside and in the Christmas card.*

7th December **9:30am** Binsted Holy Communion & Children's Church  
**11am** Oakhanger Holy Communion  
**6pm** Bentley Praise

14th December **9:30am** Bentley Morning Worship & Children's Church  
**11am** Froyle Holy Communion  
**6pm** Kingsley Praise  
**6:30pm** Nine Lessons and Carols at Froyle

21st December **9:30am** Froyle Morning Worship  
**11am** Kingsley Holy Communion  
**4pm** Christingle at Kingsley  
**6pm** Carol Service at Binsted

28th December **11am** Joint Holy Communion at Binsted

---

4th January 2026 **9:30am** Binsted Holy Communion  
**11am** Oakhanger Holy Communion  
**6pm** Bentley Praise

11th January **9:30am** Bentley Morning Worship & Children's Church  
**11am** Froyle Holy Communion  
**6pm** Kingsley Praise

18th January **9:30am** Froyle Morning Worship  
**11am** Kingsley Holy Communion  
**4pm** Messy Church at Binsted

25th January **9:30am** Bentley Holy Communion & Children's Church  
**11am** Binsted Morning Worship  
**6:30pm** Froyle Evensong

*Please note, we have temporarily stopped our 8am Holy Communion services at Binsted during the winter months.*