

MAY 2023

BENTLEY AND BINSTED

PARISH MAGAZINE

FEATURING

Big Sleep Out.....	7
Lend a Hand	14
Sudoku	16
Bentley School News	17
Waymarks.....	22
The King's Coronation	38

Vicar of Bentley, Binsted and Froyle: Revd Matt Boyes

matt@benbinfro.co.uk

C/O Church Office, St Mary's Church, Bentley, Farnham, GU10 5NA

Website: www.benbinfro.co.uk

Assistant Priest – Christopher Ogilvie Thompson Tel: 07776 178690
email: christopherot@me.com

Benefice Administrators – Lucinda Edwards (admin@benbinfro.org) and
Gemma Ball (admin@benbinfro.org)
01420 23339

Honorary Assistant Minister – David Perryman, Treetops, Upper Froyle
Tel. 520647 david.perrypeople@gmail.com

Parishes Prayer Chain – Nick Carter
01420 489122 or nick.carter1945@outlook.com

Pastoral Care Team – Nick Carter
01420 489122 or nick.carter1945@outlook.com

Anna Chaplain – Position vacant
annachaplain@benbinfro.co.uk

Readers – Harold Fish, 6 Bonners Field, Bentley. 22947

Bentley: St Mary's Churchwardens:

Jill Kiely, 11 Broadlands Close, Bentley, GU10 5LE - 22735

Nick Caddick, Tanners, GU10 5NE - 23229

Binsted: Holy Cross Churchwardens

Cathie Weldon, Malms House, GU34 4NU – 01420 525276

Stella Croom-Johnson, 4 Foresters Cottages GU34 4PS – 07740 861256

Youth Leader - Gemma Ball - gemma@benbinfro.co.uk

Worship Leader - Sam Ball - sam@benbinfro.co.uk

Parish Magazine

Articles and Advertising: Any copy or advertising enquiries should be sent to Gemma Ball on the **5th** of the month, by email (magazine@benbinfro.org)

Editor: Benefice Team

Designer: Mike Hammerton

Treasurer: Steve Fice, 01420 22197 steve.fice@btinternet.com

Distribution: Bentley – Harold Fish Tel 22947

Binsted – Alan and Anne Shelley Tel 520960

Benefice Letter

Saturday 6th May sees the Coronation of King Charles III as our monarch. Whether you are going to be watching at home, or joining us in St Mary's, Froyle for a public screening, or perhaps busy doing other things, this is a momentous day for our nation. The oaths which will be sworn, will be before God and the people and will dedicate the King to the protection of the realm and to service of us all.

The regnal name Charles comes with quite some history attached, indeed there was some speculation, he may choose to style himself George VII. Charles I, a staunch believer in the Divine Right of kings, tried ruling without Parliament and the Civil War saw him being executed in Whitehall. His son, Charles II, restored the monarchy after the period of the Commonwealth. He was known as the "Merry Monarch" and despite many dalliances, did not produce a legitimate heir which led to further unrest and invasion in protest to the accession to the throne of his Catholic brother, James II.

Following the inspiring example of his mother, will be a demanding task for the King. He will want to do things his way and try and keep the institution of the Royal Family contemporarily relevant. He will want to also, in some way, redeem the name Charles from it's unfortunate associations.

The history of kings in the Bible, is unfortunately, more a litany of failure rather than a peon of praise. Despite this, Psalm 72 begins with the prayer:

"Give justice to the king, O God, and righteousness to the king's son. Help him judge your people the right way; let the poor always be treated fairly. May the mountains yield prosperity for all, and may the hills be fruitful, because the king does what is right. Help him to defend the poor, the rescue the children of the needy, and to crush their oppressors."

A new reign is marked with hope. May we pray for our new King, that he would rule well and justly. That he would use his influence to build up all that is good in our national life and defend all that is precious.

A specially written prayer for the occasion has been issued by the Church of England:

In this issue

Benefice letter <i>continued</i>	4
Church Register	4
Youth Update.....	5
Youth - What's on	6
Big Sleep Out	7
Prayer Week	8
Praise & Picnic.....	9
Annual Plant Sale	10
Weather Statistics	11
Alton Foodbank	12
Wickham 100+ Club.....	13
Lend a hand	14
Bentley Garden Club.....	15
Sudoku Games	16
Bentley School News	17
Binsted Cricket Club	18
Bentley Fete	20
The Big Help Out	21
Waymarks	22
Curtis Museum & Allen Gallery	24
Spiders, Trees & Fungus.....	26
2nd Bentley Scouts	28
Sudoku Answers	29
Spire Appeal	30
Messy Church	31
Binsted Coffee Shop	31
Binsted School News	32
Binsted Tennis & Croquet	34
Coronation Afternoon Tea.....	35
Bentley 100+ Club	35
Binsted Fete.....	36
The King's Coronation	38
Advertisements.....	39
Local Contact Details	59
Services	60

Almighty God, the fountain of all goodness, bless our Sovereign Lord, King Charles, and all who are in authority under him; that they may order all things in wisdom and equity, righteousness and peace, to the honour of your name, and the good of your Church and people; through Jesus Christ our Lord. Amen.

Perhaps some of you would prefer the language of the Book of Common Prayer of 1662:

Almighty and everlasting God, we are taught by thy holy Word that the hearts of kings are in thy rule and governance, and that thou dost dispose and turn them as it seemeth best to thy godly wisdom: we humbly beseech thee so to dispose and govern the heart of Charles thy Servant, our King and Governor, that, in all his thoughts, words, and works, he may ever seek thy honour and glory, and study to preserve thy people committed to his charge, in wealth, peace, and godliness: grant this, O merciful Father; for thy dear Son's sake, Jesus Christ our Lord. Amen.

May God protect and keep all of us in this time of change and may all our hopes be fulfilled.

Matt Boyes

Vicar of Bentley, Binsted and Froyle

Church Register

Bentley

Friday 3rd March	Wedding of Savannah and Ben
Friday 17th March	Funeral and Burial of Mark Blackman
Monday 20th March	Cremation of Norman Pointing

Binsted

Thursday 9th March 2023	Cremation and Funeral of William and Gerald Retallack
-------------------------	---

Youth Update

BenBinFro Youth had an awesome Easter with so many events and activities to take part in. From our end of term trip to Top Rock with four:twelve, to our UNITED EGGstravaganza with our teenagers and lots of creativity in Minecraft and building our very own (real-life) Easter Gardens!

We're looking ahead into May with a spring in our steps and lots of good things to look forward to. We have our brand new youth club, Plugged In, underway which is going really well, at four:twelve we have Capture the Flag and messy games planned and we're also looking at the story of Esther in the Bible. At Upagear we've been playing some fun card games and we will carry on with chilled social evenings now we're into exam season. Please do pray for our teenagers who are taking exams this year.

Our big event in May is the Big Sleep Out! We're very excited about this and have opened it up to our four:twelve group. This event is family friendly and really encourages our young people to think about the world around us and those who struggle in their day to day lives. We are raising money for Trinity Winchester who are combatting homelessness. We will be sleeping overnight in the grounds of Winchester Cathedral on Friday 12th May in hand-built cardboard shelters. These are surprisingly warm, although not very waterproof! This experience brings it home to everyone who takes part that some people sleep like this every day – we are very lucky to be able to go home for a hot shower and yummy breakfast in the morning.



There are a number of things you can do to support our young people:

- 1) Sponsorship! We have a target of £1000 – your sponsorship goes directly to Trinity Winchester.
- 2) Donate your cardboard boxes! We need materials to build our shelters with – please drop your cardboard boxes in the porch at Bentley Church.
- 3) Donate other materials! Tape, waterproof sheeting, tent poles etc are all very useful in our shelter-building. There is a competition for the best shelter, we came 2nd last year!
- 4) Donate snacks! Shelter building is hard work.
- 5) Share with friends and family. We'd love for this campaign to reach as far as possible.

Thank you for your generosity!

Gemma Ball

Pastoral Assistant (Youth) & Administrator
gemma@benbinfro.co.uk

Youth & Children at Ben Bin Fro



WHAT'S ON IN MAY?

Contact Gemma for
more details:
gemma@benbinfro.co.uk

Monday	Tuesday	Wednesday	Thursday	Friday	Saturday	Sunday
1 Bank Holiday	2	3	4 12:30pm Binsted lunchtime club with Gemma (in school)	5 12:30pm Bentley lunchtime club with Gemma (in school) 5pm four:twelve Youth Club (year 5-7)	6	7 9:30am Bentley Worship with Children's Church (age 0-11) 6:30pm Upagear (year 8+)
8 King's Coronation Bank Holiday	9	10	11 12:30pm Binsted lunchtime club with Gemma (in school)	12 12:30pm Bentley lunchtime club with Gemma (in school) 6pm Big Sleep Out! (year 5+)	13	14
15 4pm Plugged In (year 3+)	16	17	18 12:30pm Binsted lunchtime club with Gemma (in school)	19 12:30pm Bentley lunchtime club with Gemma (in school) 5pm four:twelve Youth Club (year 5-7)	20	21 4pm Messy Church (families) 6:30pm Upagear (year 8+)
22 4pm Plugged In (year 3+)	23	24	25 12:30pm Binsted lunchtime club with Gemma (in school)	26 12:30pm Bentley lunchtime club with Gemma (in school)	27	28 3pm Bentley Pentecost Praise & Picnic (families)
29 Half term	30	31				

trinity's
**big
sleep
out**

12 May
2023

**WAKE UP TO HOMELESSNESS IN THE
GROUNDS OF WINCHESTER CATHEDRAL**

Friday 12th May 2023

Fri 6pm - Sat 7am | Family Event



Scan Me to
Donate

BenBinFro Youth are taking part in the Big Sleep Out again this year! Joining with the UNITED youth group, we have a fundraising target of **£1000**. Your generosity not only goes directly to Trinity Winchester, but you are also supporting our young people, knowing you're behind them, as they sleep in their own cardboard shelters!

This is also an appeal for your unwanted **cardboard boxes!** Please collect your boxes, the bigger the better, and drop them off in the porch at Bentley Church
Thank you.

Prayer WEEK

21st to 28th May

COURAGE IN THE FACE OF CHANGE

Thy Kingdom Come Prayer Week is a firm favourite at BenBinFro. The church family have put in lots of time and effort into creating beautiful, thought-provoking and creative prayer stations around the theme of 'Courage in the face of Change'. Bentley church hall will become home to most of these prayer stations (there will be some in Binsted, Froyle, Kingsley and Oakhanger churches too) for the week for everyone to enjoy. This week people will be praying everyday from 6am to midnight, using the prayer stations - why not sign up for an hour and see how it goes? The hour goes by so quickly!

You will also have found a postcard in the magazine for your prayer requests. If there is anything you would like prayer for, however big or little it may seem, then please do fill out the postcard and return it to a box (locations listed below.) The ministry team will open the boxes and pray for each card. You can stay anonymous or include your contact details for a member of the ministry team to contact you.

At the time of writing there will be postcard collection points in:

- All of our churches (Bentley, Binsted, Froyle, Kingsley & Oakhanger)
- Bentley Memorial Hall
- The Wickham Institute

Other collections points will be advertised through our website, on social media and through the weekly pew sheet.

Alternatively,
you can scan
this QR code to
fill in an online
prayer request
form:



Pentecost

PRAISE & PICNIC

Sunday 28th May, 3pm
Bentley Church

Come along for a time of extended worship and prayer for the whole family as we celebrate Pentecost. Followed on by a church family picnic! Bring your own picnic, some games to share and pray for the sun to shine as we spend a Sunday afternoon celebrating together.

"Then, what looked like flames or tongues of fire appeared and settled on each of them, and everyone present was filled with the Holy Spirit."

- Acts 2:3-4



Bentley Gardening Club Annual Plant Sale

in conjunction with
Saturday Café



Bentley Memorial Hall

10.30 -12.30

Saturday 13th May

yummy cakes and yummy flowers!



March 2023

WEATHER STATISTICS



Temperature



Daytime maximum

15.8°C (22nd) to 2.4°C (8th)

4 days above 15°C and 10 days below 10°C



Nighttime minimum

-4.8°C (11th) to 10.2°C (30th)

7 nights below 0°C

Rainfall



Total for month

4.72 inches (119.9 mm) over 9 days



Wettest days

0.65 inches (16.4 mm) (8th)

Wind



Dominant wind direction

South South West



Maximum gust

29 mph (13th)

Parish Weatherman



Items needed

- Tinned vegetables (carrots, peas, sweetcorn)
- UHT milk
- Apple juice (long life)
- Tinned rice pudding
- Tinned custard
- Tinned spaghetti
- Tinned meat (pies, stewing steak, hot dogs)
- Sponge puddings (long life)
- Pasta sauce
- Chocolate spread
- Hot chocolate
- Washing up liquid
- Cleaning spray
- Shampoo
- Sanitary towels

Items not needed as we have plenty in stock: Tinned tomatoes, Pasta, Baked beans, Soup

We have collection points in Bentley and Binsted churches, there is also a collection point in Froyle village hall, or you can take your donations to Alton Maltings where there is a drop box outside the main door.

If you are in need yourself, please do visit <https://alton.foodbank.org.uk/alton-get-help/> where there is advice on how to get help.



THE WICKHAM INSTITUTE (VILLAGE HALL), BINSTED

www.wickhaminstitute.co.uk



The Wickham Institute 100+ Club

As promised, listed below are the lucky winners of the April 2023 draws:

APRIL 2023

1st prize Eleanor Raynsford

2nd prize Chris Moore

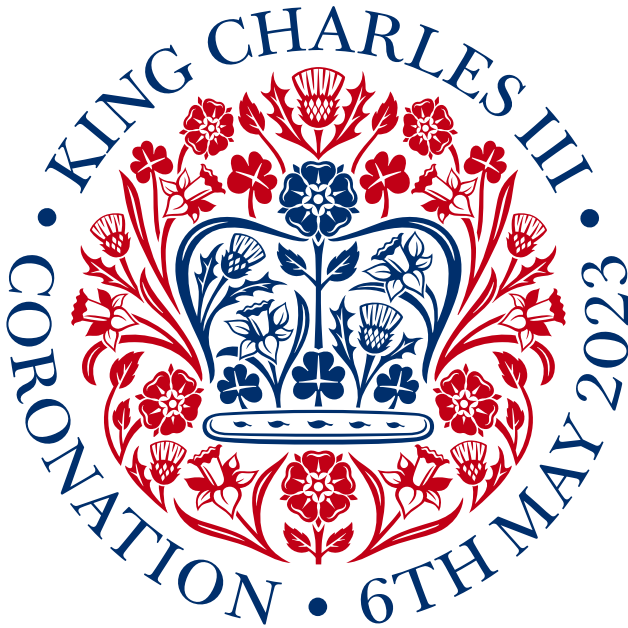
3rd prize Geoff Clarke

Details of the May 2023 draw will appear in the next magazine.

Remember each number only costs £12 (£1 per month) and you have three chances to win each month!

50% of the monthly purchase price of each number goes in prizes and 50% to the running costs of The Wickham Institute. The more people that participate in the 100+ club, the more money that is paid out in monthly prizes.

If you would like to participate an application form can be obtained from Andrew Croom-Johnson on 01420 23157 or email a request to Andrew at treasurer@wickhaminstitute.co.uk.



**Lend a
hand.
Make a
change.**



We're so proud to be celebrating the Coronation of HM King Charles III.

We're inspired by his lifetime of service to help other people and support our communities.

We'd be so pleased if you could join us volunteering with and for young people at 2nd Bentley Scout Group. You can try volunteering as part of The Big Help Out celebrating the Coronation. It feels great to help other people and in Scouts there's a place for everyone.

We have vacancies supporting the young people in the sections, with children from 4 to 18 years. We also have vacancies as trustees. All volunteering is flexible so please do get in touch with us to chat about what you could offer.

admin@2ndbentleyscouts.org.uk

#SkillsForLife

Copyright 2023 The Scout Association Registered Charity numbers 306101/SC038437



BENTLEY GARDEN CLUB



Congratulations to our four overall points winners in our Spring Mini Show on 4th April 2023 – winner Helen Curwin, runner up Mascha Tyrrell, 3rd jointly Pauline Fell & Grace Sherfield.

Tuesday 2nd May 2023

Our next regular monthly meeting is on Tuesday 2nd May 2023 at our new time of 7.30pm in the Denis Smith Room at the Bentley Memorial Hall. At this meeting Roger Butler will give a talk on Pelargoniums (tender geraniums)

Saturday 13th May 2023 10am to 12 noon – our annual plant sale in the Bentley Memorial Hall.

Please bring any plants you may have for us to sell to the hall on Friday evening between 6 and 7pm when we will be setting up, or before 10am on the Saturday morning.

For your diary

Sunday 11th June - Coach outing to Stansted House Flower Show, leaving Bentley Memorial Hall @ 10am

If you are interested, please contact Trish Cardy (contact details in your membership card)

Saturday 15th July - Bentley Fete – We hope to run the Garden Club plant stall

Sudoku Games

Sudoku game EASY

		2		5	6	8	7	4
		3						
			2		8		5	
3	9				7			
6								5
			4				9	8
	6		9		4			
						5		
7	4	9	5	3		6		

All you need to do is to fill in all of the squares in the puzzle so that each column of 9, each row of 9 and each 3 x 3 square includes every number from 1-9.

No prizes – just a huge amount of satisfaction!

Sudoku game MEDIUM

						1	5	8
		7					2	
2	1				6	3		
		8	3	4	1		7	
		2				9		
	7		9	5	2	8		
		5	8				3	1
	3					5		
6	8	1						

Sudoku game HARD

		6	7		9	1	5		
9				4			2		
1	3							7	9
7				5		6			4
					2				
3				1		9			5
4	9							1	7
			3			8			2
			1	9	4		3	5	



Bentley CE Primary School Goodbye from Headteacher Mrs Pinchess!

I joined the school in September 2013 and have thoroughly enjoyed my time here as headteacher. It has been a privilege to work with so many different staff, governors and community volunteers to provide an exciting and enriching education for ten years of Bentley pupils. Every pupil has their own unique journey through school and it is always such a pleasure to see them learn and grow. I hope to hear more of their journeys through education and life over many years to come!

I have been blessed to work with amazing people within our school team. I am really grateful to each and every one of them for their hard work and dedication. Every member of staff has brought so much to our school and the team I leave behind will continue to be child centred and work hard for every child, no matter their background or needs. We all need a little extra help at some point and our school team may not have a magic wand but are always willing to listen and able to support with advice, practical ideas and kindness. They inspire and look after one another and enjoy working as a team; a great bunch of people I will miss very much.

There have been so many amazing highlights for me from my time at Bentley and I leave with many happy memories. From PTFA events, a super Ofsted inspection, I have loved all the amazing productions (I always enjoy seeing our children shine!), the super residential experiences and amazing day visits, the wonderful opportunities from our

Bentley CE Primary *continued...*

clubs and sports...but there is nothing quite like the buzz of a typical busy day, when learning is taking place in every classroom, there is the joyful sound of children playing outside and we are all happily working together! May it long continue here in this lovely community.

My family and I are making a move overseas and we are excited (with a little in trepidation!) as we set off for South East Asia. I will certainly miss this beautiful part of the world, all the children and our special school. I have had a lovely send off from so many pupils, parents, governors, community members and our staff team. It has been brilliant to see so many people and but if I have not been lucky enough to catch up with you before I leave, then I wish you well and pass on a big thank you for all your support for the school whilst I have been in tenure.

Best wishes,

Katy Pinchess
Headteacher



Binsted Cricket Club

Binsted Friday Night Social Starts 6:30pm Friday 12th May

All abilities & newcomers welcomed and encouraged!
...or come and watch the action from the comfort of your picnic chair or blanket!



Binsted Cricket Club Seniors Net's & Junior* Coaching

All abilities welcome to join
us for a fun, social evening

For more information about BCC, contact:
Ben Krompel
benkrompel@hotmail.co.uk
or
Paul Knight
p.knight1967@gmail.com

* Juniors from Year 5 upwards please



Binsted Tennis & Croquet Club

Members welcome to join
us for a fun, social evening

For more information and membership
options for BTCC, contact:
Mal Durno
mal.durno@btcc.com
or
Sue Clarke
susanclarke3001@gmail.com

BBQ

Village Bar

Children's Playground

Picnic Tables

A few very brief messages this month:

SENIOR CRICKET: Fixtures most Sundays until mid-September. NEW PLAYERS WELCOME!

JUNIOR CRICKET: Free coaching for Year 5 upwards on Friday evenings. NEW PLAYERS WELCOME!

FRIDAY NIGHT SOCIALS: Senior and Junior cricket practice & coaching, with BBQ and Bar, every Friday evening from 12th May. EVERYONE WELCOME – YOU DON'T HAVE TO PLAY!

Hope to see you at the Rec for one or all of the above.



Binsted CC Senior fixtures 2023

Date <small>(Sunday unless indicated)</small>	Versus	Venue	Time
22 April 2023 <i>(Saturday)</i>	Headley CC	Away	1.00pm
30 April 2023	Tilford CC <i>(Bank Holiday Weekend)</i>	Away	1.00pm
7 May 2023	Game TBC	Away	1.00pm
14 May 2023	Brook CC	Away	1.00pm
21 May 2023	Rowledge Casuals CC	Home (a)	1.00pm
28 May 2023	Game TBC <i>(Bank Holiday Weekend)</i>	Home	1.00pm
4 June 2023	Medstead CC	Away	2.00pm
11 June 2023	Lord Wandsworth College (Staff XI)	Away	1.00pm
18 June 2023	No game - Father's Day		
25 June 2023	Vagabonds CC	Home	1.00pm
2 July 2023	Herriard CC	Away	1.30pm
9 July 2023	Headley CC	Away	1.00pm
16 July 2023	TOUR (Friday 14th to Sunday 16th July)		Weymouth
23 July 2023	Fairlands CC	Home	2.00pm
30 July 2023	Lynchmere CC	Away	2.00pm
6 August 2023	Irascibles	Home	1.00pm
13 August 2023	West Meon CC	Home	2.00pm
20 August 2023	The Sandrock T20	Home	1.00pm
27 August 2023	Geoff Thorne XI <i>(Bank Holiday Weekend)</i>	Home	11.00am
3 September 2023	Rowledge Casuals CC	Home (h)	1.00pm
10 September 2023	Cron dall CC	Away	1.00pm
30 September <i>(Saturday)</i>	BCC CLUB DINNER/PARTY	The Binn	6.30pm
Binsted Cricket Club	Captain: Paul Knight, 07955 374974		
Recreation Ground	Secretary: Ben Krempel, 07907 247117		
The Street	Website: https://binsted.play-cricket.com/home		
Binsted			
Hampshire GU34 4PB			

A date for the Diary
Saturday 15th July
@ the Recreation Ground

Bentley Fete & Flower Show 2023



Featuring the Cavalcade of Cars, Bikes and tractors

This year we celebrate the 126th annual Fete and Flower Show in Bentley. It will be a mixture of old and new but very English with Jonathan the Jester, a Dog Show, Terrier Racing, Tug of War, Children's Games, Inflatables, Gymnastic Display, refreshments of all types and, let's slow it down, in the main Marquee there will be Bentley's finest flowers, produce and art, exhibited in the various Flower Show competitions. Oh, something else, music will be provided by a man playing a guitar, a harmonica and with a skeleton that plays the drums, worth the admission on its own.

Join the fun just before 2pm and watch the Cavalcade of Cars through the village. There will be Jags, Porches, Ferraris, tractors, a Bentley or two. A real spectacle. Admission £2 for adults with children under 16 free. We finish about 5pm, exhausted but happy.

“THE BIG HELP OUT”

The Bentley, Binsted & Froyle Care Group welcomes new volunteers



If you would like to join us we would love to talk with you.

As a volunteer driver all you give is a few hours, when you are able, to drive a client to a medical appointment.

To the client the driver provides a lifeline to get to a medical appointment and an opportunity to have a little chat.

**If you can help please call Cathy Smith, Chair on 01420 520169
or Ellen Saunders, Secretary on 01420 590697**



Some of us already drive for or help coordinate drivers for The Care Group. Others use the service to take them to medical appointments. As a community we all benefit from this service.

One driver tells me that he enjoys driving because “now he is retired he wanted to help people in his new local community without feeling tied to a regular commitment”. You can select a journey that fits with your schedule. The Group pays expenses but you give your time freely. If you think you are able to help please get in touch with Cathy or Ellen (phone numbers above).

We take clients to all types of medical appointments. There is a suggested voluntary donation for the service but this is significantly less than the cost of a taxi, even one way. One of our regular clients says, “The generous service given by Care Group volunteers makes such a difference to our lives. We are all very grateful indeed.”

**If you need a lift to a medical appointment please call the Care Group
Mobile on 07775 458873.**



WAYMARKS...

Maintaining Binsted's Rights of Way network

The Binsted Rights of Way volunteer team will by now already have met up with our HCC Community Ranger Megan at the Parish Council offices during April, to receive Path Warden training. This has been long delayed, mainly due to the pandemic and its after-effects. We love Megan's enthusiasm and drive to make enhancements to many of the Rights of Way in her quite huge territory and look forward to helping her meet some of these goals.

In fact, the training session was the second time some of us were able to

meet Megan. There is a major project soon to start, resurfacing parts of Bridleway 62 between its eastern end in Frith End and the end of the Straits Inclosure. This is a follow-on to the excellent resurfacing of Bridleway 504 and part of 62 in 2021, between Sickles Lane and the Straits Inclosure, and aims to provide a reliable off-road route between the eastern and western parts of the parish. One of Forestry England's pre-conditions to approving the work was that a number of important trees along the route must be protected from potential damage by the heavy plant being used in the resurfacing work. So, Megan and four of the Binsted volunteer path wardens spent a happy

Friday completing the required work of installing tree protectors. By the time you read this, we hope the resurfacing work is well underway and we can soon all enjoy a (relatively) mud-free journey along this bridleway!

We have also reviewed and closed a number of problems reported on footpaths outside Binsted Parish that were still outstanding when Megan took up her post. Not all parishes are fortunate enough to have teams of volunteers regularly inspecting and improving their rights of way. So, occasionally, when we have time, we participate in path reviews, bridge surveys and work parties in other local parishes.

The Binsted volunteers are regularly inspecting the parish's paths, but if you would like to report a problem on any of the Binsted Rights of Way, whether it is a fallen tree, a broken stile, a collapsed fingerpost or simply some overgrown vegetation, you can do so online on the Hampshire "Report a problem on a right of way"

page – this requires you to create an account and log in to the site first. Alternatively, you can use the volunteer team's own email address to do so – it is BinstedRoW@gmail.com. One final way of reporting a Rights of Way problem is to do so on the Binsted Community Facebook group. The volunteer team will try to identify problems reported there and deal with them promptly if we can – in all cases, please give as much location information as possible.

Walking Resources

Finally, the Alton Walking Festival is now in full swing. It runs from 1st – 31st May 2023 and, as usual, has a large number of guided walks covering a wide variety of distances and themes. All of the walks must be booked online and many are already fully subscribed, but there should still be some availability. You can find out more information on the Walk Alton website or the Alton Walking Festival Facebook page.



CURTIS MUSEUM & ALLEN GALLERY

(01420 82802)

OPENING TIMES

Tuesday to Sunday

Curtis 10am – 4.30pm. Allen 10.30 – 4pm

www.hampshireculture.org.uk/curtis-museum

www.hampshireculture.org.uk/allen-gallery

ALLEN GALLERY EVENTS

Borderlands

In early May we will be hosting an Exhibition by the Borderlands Artists, a group of professional contemporary artists who live on the borders of Surrey, Hampshire and Sussex. The group includes painters, printers, sculptors and ceramicists. This exhibition will showcase each artist's work and is an eclectic mixture of large and small, in a variety of media. It will be displayed in the main Gallery area.

Exhibitions in the café area

A display of our creative project with Dementia Friendly Alton and St [Lawrence School](#), which takes a slightly different look at the Coronation as we explore themes around nature, home and memory loss. **1st - 13th May**. FREE

Clay painting with natural dyes



This will be followed by [Alton Climate Action Network's](#) travelling exhibition **Listen to the Children**". ACAN will also be delivering workshops for young people, more information to follow in the coming weeks.

As part of the [Big Help Out](#) we will be holding a special event to mark **His Majesty The King's Coronation. 8th May**.

If you are interested in joining our volunteer team - whether to run creative classes, help with evening events or support front of house - we would love to welcome you to the Gallery to meet others and see what opportunities are available.

CURTIS MUSEUM

A date for your diary

Dolls' House Weekend

Saturday 22 July 2023, from 10.30am until 4pm

Sunday 23 July 2023, from 10.30am until 4pm

The Curtis Museum is opening its doors again to dolls' houses large and small to view and play with. There will be a themed trail for everyone to follow as well as miniature items for sale.

This year the main event will be on **Saturday 22 July** and the Museum will be joined again by the North East Hants Miniatures Group. In addition, there will be local exhibitors to support the day's activities.

On Sunday 23 July the dolls' houses will still be out for play along with various activities for children to enjoy.

This event will be attractive to all those interested in dolls' houses and their accessories. For more information please contact the Community Manager on 01420 82802 or email as above. Free. Donations welcomed.

* * *



Rediscovering the ceramic collection at the Allen Gallery in Alton

Hampshire Cultural Trust (HCT), a local charity which operates 24 museums, galleries and arts centres across the County, is taking a closer look at the stories behind their museum collections at the Allen Gallery. HCT is undertaking a major research project to expand and re-claim information about the nationally and internationally significant collection of ceramics hosted at the Gallery.

Volunteers have been recruited to work alongside staff to research and conserve objects, as well as to come up with new ways to showcase the collection items, and share their stories with visitors and online audiences. This activity is part of a year-long project, **Rediscovering the Allen Gallery**, to unearth the untold stories of the collections, develop more volunteer opportunities and forge new and develop existing relationships with community groups and local partners. The long-term goal of the project is a capital works redevelopment of the building. Funding for the first year of the project has been received from National Lottery Heritage Fund.

The aim of the community research programme is to improve museum records by creating an up-to-date inventory of items and photographing them. The research will focus on social and previously underrepresented histories to develop themes for the objects' interpretation and display in the Gallery. The team will showcase objects with significant stories throughout the process and share

them in venue, via the trust's digital publication Culture On Call and on the HCT collections website.

The collections include an impressive and varied selection of pottery, porcelain and tiles dating from 1250 to the present day. The ceramics on display at the Allen Gallery form part of a much larger collection cared for by Hampshire Cultural Trust, and stored in Winchester, which is also being researched as part of this project.

Deborah Neubauer, Director of Community and Impact at Hampshire Cultural Trust commented, 'We are very excited to begin to share the stories behind the fascinating collection of ceramics at the Allen Gallery. The collections team of both staff and volunteers is working hard to rediscover the important history of these objects, how they contribute to the history of Alton and their significance both **nationally and internationally**.'

Hampshire Cultural Trust will soon be launching an appeal to raise funds to realise the second phase of the project: a refurbishment of the Allen Gallery which will showcase the ceramics collection, create a dedicated community space and make a significant contribution to the culture, economy and life of Alton.

For more information and to find out how you can support **Rediscovering the Allen Gallery**, please visit <https://www.hampshireculture.org.uk/rediscovering-allen-gallery>.



Spiders, trees and fungus

The day we're born, at least, we all have mothers. With a little luck we go on to find we have fathers, and perhaps even siblings. Eventually we may be introduced to the whole of our family tree. This usually drawn, with the oldest at the top. If it's a tree, the roots should be at the bottom. Be that as it may, it's a hierarchy, with seniority usually counting for something.

Then, when we're packed off to school, we meet a new hierarchy. The teacher is in loco parentis supposedly, though we could have long debates about what the teacher is actually there for. But can we agree this is a different hierarchy to the one we left at home? Isn't this more like a spider's web than a tree, with the teacher

sitting at the centre of the web with all eight tarsi monitoring the activity around the periphery?

Then we go off to work and, usually we fall into another web, or perhaps it feels more like another family, though rarely are we the chief beneficiary. At least, that's been my experience.

And for long enough, even as I clawed my way up the web or drifted towards the top (or bottom) of the tree, these seemed to be the only main alternatives.

But there is a third, and, once again, there is a good analogy in nature, and that's the network. Trees can grow well enough on their own, in the middle of a field or even in a car park. But they thrive best in a forest. The neighbours don't have to be the same species, it may actually help if there's a mix, especially broadleaf/conifer.

Why is this? The answer we are seeing emerge is that the trees are connected to an underground network of fungi, called the mycelial network. Forget toadstools and bracket fungus, they're just the fruiting bodies that appear once a year to spread the spores. It's the threads of mycelia that carry essential chemicals round the system and quite literally trade with tree roots. Both parties gain by acquiring what they cannot produce by themselves. There is loose talk of trees communicating with each other, but what is actually happening is this exchange of nutrients and other useful stuff that varies with the seasons and climatic conditions. It is on a scale and complexity to rival our nervous system. There are only winners.

One Saturday in March I went along to a leaving do at the Jolly Farmer and I think I saw a human mycelial network in operation. No-one was in charge. There were no speeches. The conversation was fascinating, whomever I spoke to.

We started off from the car park and walked up to Blacknest Fields, up the hanger to Alice Holt Lodge Inclosure and back again. We talked about a number of projects along the way. I knew about half my companions as locals, but others I met had come from all over east Hampshire and west Surrey. The mission we all shared was bringing nature back to our countryside.

And whose leaving do was it? It was Steve Lockett's. He and his partner were leaving to start a new chapter in their lives in the wilds of Warwickshire. I first met Steve on an evening's bat walk around Dockenfield. I was persuaded to join other butterfly enthusiasts at Bentley Station Meadow where Steve was regenerating a habitat fit for some rare species. I didn't know just how much else he had been involved in until I spoke to some of the people at the 'do'. Steve's quiet enthusiasm will be missed but the network goes from strength to strength.

Ben Hamlin

Tree Warden

binstedtrees@gmail.com

2nd Bentley Scouts

07:21 from Bentley station on the first Saturday in March to Waterloo!! Three Scout and two Explorer Scout teams joined 8000 other Scouts in London for the Monopoly Run. Seven and a half hours to visit all the properties on the Monopoly board with a host of challenges to complete along the way. A great way to experience London hopping on and off of buses and tube trains learning about our capital city. Our teams were a credit to the Scout Group and Bentley, I was proud to accompany one team for the day even while standing outside Hamleys for 30 minutes!!



Two weeks later and the Explorers took part in the delayed 2022 County Kudu overnight hike competition against teams from across Hampshire. The teams complete a hike navigating a variety of



challenges designed to test their physical and mental strengths. Our teams finished 6th in the Silver competition and 5th in the Gold. They should be immensely proud of their achievement.

The end of March witnessed our newest and youngest section, Squirrels, planting a range of fruit trees in the grounds of Pax Hill as part of the Queen's Canopy. We were fortunate to be donated the trees by Blackmoor Nurseries, they will grow to be mature trees while hopefully our Squirrels develop and mature through Scouting.

Fun for all from 4 to 18, with lifelong achievement thrown in. In June we will be holding our annual Group Camp at Walton Firs in Cobham, Surrey. More opportunities for fun and achievement.

We are fortunate to have a committed team of adult leaders that enable these activities to take place. We would welcome anyone who feels they would like to join in the fun, both for the young

people and themselves. If you have skills or interests that you would like to share, please get in touch with us on the numbers below.

On May 20th we will be holding the first of our Jumble Sales this year, any assistance would be greatly appreciated, in particular on the Saturday for setting up, selling and tidying up.



admin@2ndbentleyscouts.org.uk

melissa@2ndbentleyscouts.org.uk

stuart@2ndbentleyscouts.org.uk

Group Chair Melissa 07974377736

Group Scout Leader Stuart 07707448984

Sudoku Answers

9	1	2	3	5	6	8	7	4
8	5	3	7	4	9	1	6	2
4	7	6	2	1	8	9	5	3
3	9	5	8	2	7	4	1	6
6	8	4	1	9	3	7	2	5
1	2	7	4	6	5	3	9	8
5	6	1	9	8	4	2	3	7
2	3	8	6	7	1	5	4	9
7	4	9	5	3	2	6	8	1

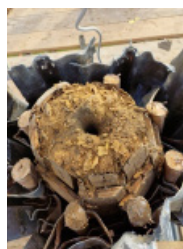
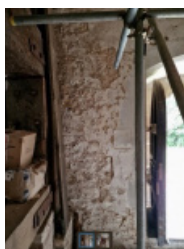
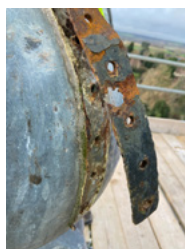
3	9	6	4	2	7	1	5	8
8	5	7	1	9	3	4	2	6
2	1	4	5	8	6	3	9	7
9	6	8	3	4	1	2	7	5
5	4	2	7	6	8	9	1	3
1	7	3	9	5	2	8	6	4
4	2	5	8	7	9	6	3	1
7	3	9	6	1	4	5	8	2
6	8	1	2	3	5	7	4	9

2	6	7	8	9	1	5	4	3
9	8	5	4	7	3	2	6	1
1	3	4	2	6	5	8	7	9
7	1	2	5	3	6	9	8	4
8	5	9	7	2	4	1	3	6
3	4	6	1	8	9	7	2	5
4	9	8	3	5	2	6	1	7
5	7	3	6	1	8	4	9	2
6	2	1	9	4	7	3	5	8

Sudoku game EASY

Sudoku game MEDIUM

Sudoku game HARD



HOLY CROSS TOWER AND SPIRE APPEAL

Many of you will already be aware that just over a year ago Holy Cross Church suffered quite a lot of storm damage and since then we've been working hard to get it repaired.

As is so often the case the building work uncovered historic issues that weren't covered by our insurance, but needed to be dealt with alongside the insurance work. This means the PCC have had a very high level of unforeseen expenses in the last 12 months.

The insurance work has come to an end but a major uninsured issue that has recently come to light is that our **tower floor, spire and weathervane are all in a dangerous condition** and need urgent repairs. We're exploring all options but it looks as though we will still be short of around £35,000 so need to launch an appeal. We're still waiting for some of the quotes so the figures might change but we hope not by much! It is a lot of money, but if we break it down into smaller donation amounts it seems much more manageable.

It would be wonderful if you could make even a small donation as every little counts:

£35,000 equals 1000 donations of £35

OR 500 donations of £70

OR 350 donations of £100

OR 100 donations of £350

Many of you in Binsted have received a booklet with more information about the spire appeal, but if you've missed out it can also be found on the BenBinFro website at www.benbinfro.co.uk/our-churches/binsted/, or as paper copy in the church porch. Thank you to everyone who has already contributed to the appeal – it all helps.

If you'd like more information please contact one of the churchwardens:

Stella
(binstedwarden@benbinfro.co.uk
07740 861256) OR

Cathie
(churchwardenbinsted@benbinfro.co.uk
07828 083535)





Sunday 21st May

4-6pm

Binsted Village Hall

(Wickham Institute)

Join us for a fun-filled afternoon of all age arts and crafts, activities, stories and songs. Be prepared to get messy!

Supper is provided.



BINSTED COFFEE SHOP

@ THE WICKHAM INSTITUTE

(Church Street, Binsted GU34 4NX)



WEDNESDAYS 10am – 12noon (during term-time)

PLEASE COME ALONG AND JOIN US

COFFEE, TEA and HOME-MADE CAKES ONLY £2

ALL WELCOME

(CHILDRENS' TOYS AVAILABLE)



FREE WI-FI

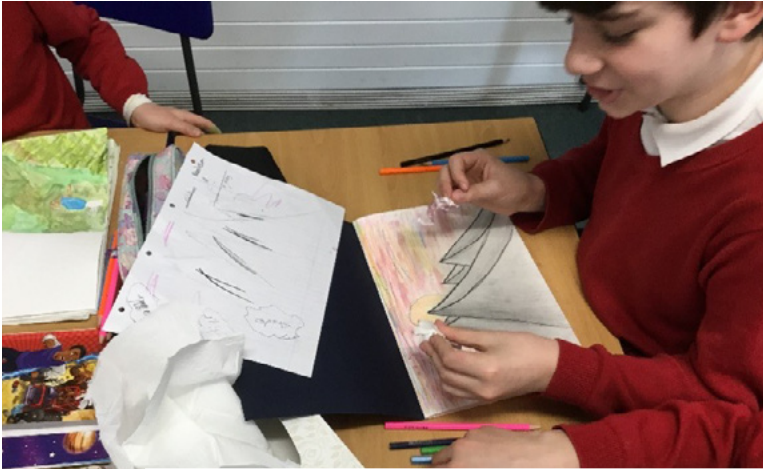


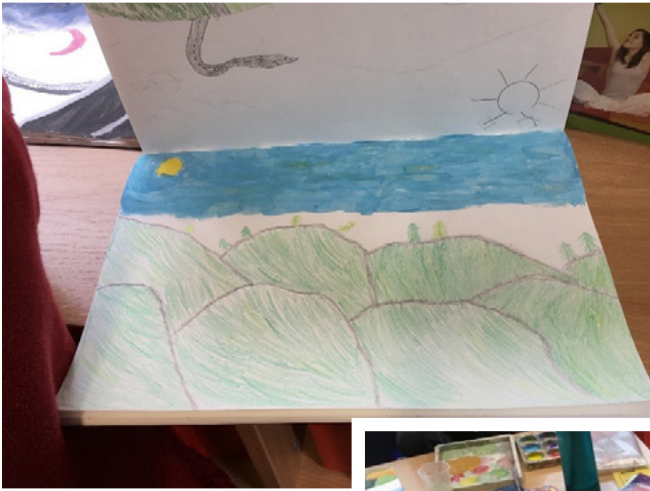


School News - Binsted CE Primary

At Binsted we believe in the Christian values of Faith, Hope & Love.

Silver Birch have been looking at landscape painting this half term and have created some excellent pictures of the South Downs landscape.





We used a range of media including: paint, pencils, sketching pencils and felt tip pen to create these lovely landscapes. Please check out the school website for other examples of our fantastic artwork!





BINSTED TENNIS & CROQUET CLUB 2023



...is open!

Just as the sun finally appeared in the first week of April, the court at Binsted Tennis club opened for business. Despite the long, wet winter and the pigeons' best efforts, the court is in great condition and ready to welcome both old and new members for 2023.

For any members who have already been playing this year, please note that the padlock code for court access changed on Friday 7th April and you will need to re-join to have access.

For old members rejoining and new members who would like to share in this marvellous local facility, details and a membership application form can be found on www.e-voice.org.uk/btcc

Key dates

- 1st April Start of new Tennis & Croquet Club season
- 7th April New court access code issued to members
- 29th April New online court booking system goes 'live'
- 12th May 6pm croquet club evenings start
Friday night BBQ & village bar socials kick off

For any other queries, contact club secretary Graham Jones on graham.jones666@gmail.com or on 07825 201 541.

Coronation Afternoon Tea

Sunday 7th May

from 3pm

Binsted Recreation Ground

With Brass Band
Fun & games
Please bring along
your own picnic
Tea/coffee will be
supplied



Any cake donations to share will be gratefully received!



BENTLEY MEMORIAL HALL 100+ CLUB

Congratulations to the Winners

The winners for the March
and April draws of the Bentley
Memorial 100+ Club are:

MARCH 2023

- 1st Prize Chris Holmes
- 2nd Prize Helen Curwen
- 3rd Prize Peter & Sally Clarke

APRIL 2023

- 1st Prize Dick Davies
- 2nd Prize Malcolm Macnaghten
- 3rd Prize Penny Robinson

If anyone is interested in contributing regularly towards the running of the Bentley Memorial Hall, with a chance to win prizes every month, you can join the 100+ Club. Please contact us on bentleymemorialhall@gmail.com for further information.

Binsted Fete, Flower, Photography and Dog Show

1-4pm Saturday 8th July 2023

Join us for A Day of Family Fun, Games, Competitions and good old Binsted Community Spirit.

So, get growing those flowers and vegetables. Start the brewing, knitting, and taking those marvellous photos.

Find us at www.binstedfete.co.uk for a downloadable copy of the full schedule including description of Cups and Trophies, plus entry form.

Section A: Vegetables, Fruit, Flowers and Plants Binsted fete will provide paper plate for the exhibits

1. Vegetables, 4 kinds in an appropriately sized box for the Gwyther Cup
2. Vegetables, 3 kinds of salad vegetables on a paper plate for the Blacknest Cup
3. Soft fruit, paper plate of 18 of 3 kinds
4. Gooseberries, paper plate of 10.
5. Rhubarb, 3 sticks trimmed the leaf, clean the root
6. Peas, dish of 5 pods.
7. Broad beans, plate of 5 pods.
8. Runner beans, plate of 5 pods.
9. French beans, plate of 5 pods.
10. Carrots, bunch of 5.
11. Beetroot, 3 roots leaves trimmed and tied
12. Potatoes, dish of 5 any kind
13. Cabbage, 2 heads.
14. Lettuce, 2 heads.
15. Onions, 2
16. Tomatoes, plate of 3,
17. Tomatoes, plate of 5, small fruited variety
18. Cucumbers, 2
19. Courgettes, 3 with or without flowers
20. Herbs, bunch of 3 kinds, 9 stems
21. Any vegetable not mentioned above.
22. Children's class: any exhibit from classes 1 to 21 grown and staged by someone aged 16 or under.
23. Novelty class: Ugliest Vegetable
24. Sweet peas, vase of 9 stems of one colour.
25. Sweet peas, vase of 9 stems, mixed colours.
26. Roses, 3 stems large headed / what type.
27. Roses, 3 stems spray or cluster flowered (Floribunda).
28. Roses, 1 stem of a scented rose (condition is not important)
29. Dahlias, 1 stem
30. Dahlias, vase of 5, one or more varieties.
31. Flower grown from a bulb, 1 stem
32. Flowering shrub
33. Annuals, vase of 5 stems
34. Flowering perennials, 3 or more kinds, 9 stems.
35. Perennial, 1 stem for the Hampden Cup
36. One flowering houseplant (must have been in owners possession for at least 6 months)
37. One foliage houseplant (must have been in owners possession for at least 6 months)
38. Fuchsia, 6 heads
39. Hosta, 5 leaves, cut and presented in a vase

40. Children's class: any exhibit from classes 24 to 39 grown and staged by someone 16 or under.

Section B: Flower Arrangements

This section includes flowers which you can buy rather than grow

41. An arrangement using flowers, foliage and accessories. No bigger than 60 x60 cm any height.
42. A Posy you would give to a loved one. Any colours or materials. No bigger than 40x40cms any height. To be displayed in water.
43. Miniature arrangement. No bigger than 10x10cm any height and any container.
44. Children's class: any arrangement of garden flowers by someone 16 or under.

Section C: Domestic Produce

JARS

45. Jar of strawberry jam
46. Jar of any other fruit jam
47. Jar of marmalade
48. Jar of chutney (not pickle)
49. Jar of jelly
50. Jar of curd

BAKES, please let us know if you don't want your bakes donated to the cake and tea stool on entry , we will save it for you.

51. A Victoria sponge
52. Lemon sponge
53. Decorated cake.
54. 6 decorated cupcakes
55. Family fruit cake
56. 6 Biscuits (of any variety)
57. 6 Pieces of fudge
58. A fruit tart: no soggy bottom please!
59. 6 cheese scones
60. A loaf of bread

PRODUCE

61. 6 eggs arranged in a basket
62. 1 Bottle of homebrewed alcoholic drink of your choice (opened and stoppered)
63. 1 Bottle of homebrewed Kraft beer
64. 1 Bottle homemade soft drink (opened and stoppered)

Section D: Arts and Crafts

65. Any hand-knitted or crocheted item
66. An item of needlecraft
67. A homemade greeting card
68. A piece of jewellery
69. An item of any other handicraft



THE KING'S CORONATION

CORONATION SERVICE – SATURDAY 6TH MAY

Froyle Church is planning to live-stream the Coronation Service into the church. Anyone in the Benefice who would like to watch the Service in a church setting is welcome to come.

At the time of going to press, we do not know the time or the form of the Service, but our hope is that we shall be able to join in the participatory parts as if we were there!

The plan is to offer tea and coffee before the service, and something stronger and more celebratory at the end.

If anyone who might want to come could let me know (no commitment!), we can update you as and when the shape of the Service becomes clearer!

William Knowles
wbk@wbknowles.com
07775 928933





ORGANIC & GRASS FED MEAT
PRODUCED AND SOLD
ON YOUR LOCAL FARM

BUTCHERS

WWW.MILLFARMORGANIC.COM

OPEN EVERY
FRIDAY & SATURDAY
7.30AM – 4.30PM

01420 22331
INFO@MILLFARMORGANIC.COM

ISINGTON ROAD
ISINGTON
GU34 4PN

HOME COMPUTER SUPPORT & TUITION " My PC Home Help ! "

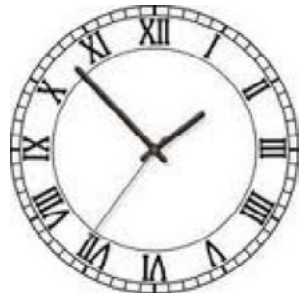
Friendly, Professional Support for Windows
PC, Apple Computers, iPads etc.



Computer Repairs, Virus Removal & Upgrades
Broadband Wired/Wireless Solutions & Setup
One To One Home Tuition for all Abilities
Smart TVs and other Home Technology
I Supply, Install & Support PCs, iMacs & iPads

Call **RICHARD SIERS** on Bentley (01420) 22844
enquiries@myPChomehelp.co.uk

visit: www.myPChomehelp.co.uk



M. W. SHAW – FARRINGDON

*Antique Clock Repairs
& Restoration*

House calls undertaken

All work guaranteed

Tel. Mr. M. W. Shaw

01420 588457

CHARLES READ

& DAUGHTER

INDEPENDENT FUNERAL DIRECTORS & MEMORIAL MASONS



24 HOUR PROFESSIONAL
& PERSONAL SERVICE

PRIVATE CHAPELS OF REST

PRE PAID & PRE ARRANGED FUNERALS

01420 83551

www.charlesreaddaughter.uk

11-13 Turk Street, Alton, Hampshire GU34 1AG



NACD Member



PR AERIALS

DIGITAL TV & SATELLITE SPECIALIST



Paul Rolfe



Free Quotes • Service & Repairs • Full Year Guarantee on parts • OAP Discounts
TV installations considered • Freeview achieved where others have failed

T. 01420 80650

M. 07918 913194

www.praerials.com

ADVERTISE YOUR BUSINESS HERE

CONTACT US

magazine@benbinfro.org

SAM BALL TUITION

MATHS AND MUSIC TUITION

Teaching is a passion of mine and it's so exciting to see my students achieve that light bulb moment and get excited about their subject!

I have been teaching Music and Maths for the past 9 years. I have achieved A level grade A in both these subjects and have a degree in Theology and Music. I also have a clear enhanced DBS check.

So, if you have always wanted to learn a musical instrument, develop your music skills, or progress in your maths, please send me an email or contact me through my Facebook page.

**TEACHING MATHS, DRUMS,
GUITAR & PIANO**

FACEBOOK: <https://www.facebook.com/samballtuition/>

samballtuition@gmail.com



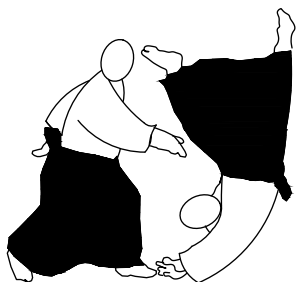
GCSE Tuition

Contact Juana

juana.garcia@live.co.uk



KI AIKIDO



A TRADITIONAL JAPANESE MARTIAL ART

Using coordination of mind and body Ki Aikido teaches calmness, confidence and eliminates fear in everyday life

This powerful but non competitive art is suitable for everyone irrespective of age, sex or physical ability

Monday & Thursdays 7.30pm - 9.30pm
Bentley Memorial Hall, Bentley, Nr ALTON

Enquiries: Email: altonaikido@gmail.com
Mobile: 07717534643

ADVERTISE YOUR BUSINESS HERE

CONTACT US

magazine@benbinfro.org



Sue Hood

Pet Portraits

A unique and forever memory of your beloved pet, working in pastels I capture the very essence of your pet, their character, their unique qualities.

For more information, prices etc

Tel 07920 038683

Email susaninverarity1@gmail.com



**ADVERTISE YOUR
BUSINESS HERE**

CONTACT US
magazine@benbinfro.org

**ADVERTISE YOUR
BUSINESS HERE**

CONTACT US
magazine@benbinfro.org



Looking for a venue
for a party or business meeting?

**Why not hire
Binsted Sports Pavilion?**

It's available to hire in the evenings,
at weekends and in office hours every Friday.
Located at Binsted Recreation Ground,
the hall has great views, free parking
and costs just £50 for 4 hours.

Email: clerk@binstedparishcouncil.org.uk
to discuss your requirements



**THE WICKHAM INSTITUTE
(Binsted Village Hall)**



LOTTERY FUNDED

Having a party? Need a venue for a one-off meeting or conference?
Looking for somewhere to hold a regular club/society meeting or class?

Why not consider hiring our lovely Grade II listed hall. It is light and airy, with a stage and a modern kitchen. The hall can seat up to 80 at tables or set up for conferences and meetings, and can accommodate up to 120 standing (Covid restrictions may apply).

We have very reasonable hire rates, why not contact us.



**For bookings or further information,
please contact the booking secretary on
01420 22388 or visit our website
www.wickhaminstitute.co.uk**



ECS

Tel: 01420 561 777

email: info@easycleanservices.co.uk

Tanker Services

Cesspits - Cesspools -Septic Tanks
Treatment Plants - Pump Stations
Gully and Interceptors
Grease Traps

Drainage

Drains and Pipes Unblocked
High Pressure Jetting
CCTV Surveys
Drain Re-lining - No Dig Repairs

Servicing

Servicing of Sewage Treatment Plants & Pump Wells
British Water accredited engineers
Supplier of Pumps and consumables
Regular maintenance contracts or one-off services



COUNTY Oil Tank SOLUTIONS

— The Oil and Water Tank Specialist —

Free Tank Surveys

Domestic & Commercial Tank Replacements

Tank Servicing & Tank Disposals

AGA & Rayburn Servicing

GAUGES supplied and fitted • Hire Tanks

Commercial Jobs Undertaken

24 Hr Emergency Call Out for Failed or Leaking Oil Tanks and Pipework

Call us on **07799 643455** for ALL your tank needs

james@countyoiltanksolutions.com • www.countyoiltanksolutions.com

Bentley Memorial Hall

The perfect venue for celebrations, weddings, children's parties, meetings, specialist classes or exhibitions.

Conveniently located in the centre of the village with kitchen facilities and ample car parking.

Main hall accommodating up to 100 people and two meeting rooms accommodating up to 60 people each. Main hall and one meeting room can be combined for larger events.

For more information and to book the hall, please go to the website www.bentleymemorialhall.org



ACORNS B&B



Acorns is a self-contained guest cottage, located in the picturesque village of Lower Froyle.

It has its own entrance, parking, and a south facing terrace which offers beautiful views across open fields.

It has a generous double bedroom, comfortable sitting room with a smart TV, and a luxury shower room, together with a small but well-equipped kitchen.

A complimentary continental breakfast basket will be provided for your stay, along with a selection of Twinings teas and Lavazza coffee pods.

Contact Alice for further information on 07768 165233 or ghinns@gmail.com



**DOWNIE &
GADBAN**

**Residential Conveyancing - Wills -
Powers of Attorney - Probate -
Commercial Property - Property
Development - Dispute Resolution**

Instant conveyancing quotes available via our website
www.downieandgadban.co.uk

We are here to help you.
Call **01420 82879** or email us at
info@downieandgadban.co.uk

Why Choose Us?

We pride ourselves on being friendly, approachable and professional. We have been in our current building at the end of the High Street in Alton (close to M&S, The Ivy House and The White Horse) since 1962 and have been serving generations of families in the Alton area since 1905.



www.downieandgadban.co.uk

Rockbourne House, 100 High Street, Alton, Hampshire, GU34 1ER

A moment to reflect and share memories.

“Somewhere between heaven and earth”

Bury Court, Hole Lane, Bentley, GU10 5LZ



Tel: 020 3475 0550 team@bury-court.com



Dance Fitness Farnham

All classes
£7
First Class
Free!

Zumba® Fitness

Saturdays 9am Rowledge Village HALL
Thursdays 8pm Farnham Memorial Hall

Everything is
better
when you
dance!

Zumba® Gold

LOW IMPACT

Tuesdays 9.30am Rowledge Village CLUB
Wednesdays 9.30am Elstead Village Hall
Thursdays 9.30am Farnham Baptist Church
Fridays 9.30am Milford Village Hall



Fitsteps

Mondays 9.30am Elstead Village Hall
Wednesdays 6.30pm The Spire Church,
Farnham

Low impact - ideal for
beginners, those returning
to exercise, older active
adults

Love Strictly? Then you'll love
Fitsteps! Latin and ballroom
dance workout - no partner
required.

Contact Alison Edwards
0781 397 6841
alizumba835@gmail.com
and on Facebook



Keep Fit With Kit

MOBILE PT | ONLINE COACH | GROUP SESSIONS



I'M KITTY, A MOBILE PERSONAL
TRAINER FROM BINSTED. WORK
WITH ME TO:

- IMPROVE YOUR CONFIDENCE
- OVERCOME GYM ANXIETY
- IMPROVE YOUR STRENGTH AND MOBILITY
- JOIN A COMMUNITY
- BUILD SUSTAINABLE HABITS THAT LAST

BOOK A FREE CONSULTATION

07471687927 | KEEPFITWITHKIT@OUTLOOK.COM |
WWW.KEEPFITWITHKIT.COM

Yoga Classes

All levels welcome
FREE first class

Thursday, 6.15pm
Binsted Village Hall

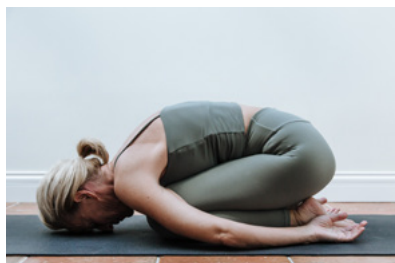
Thursday, 8pm
Online

Sunday, 9am
Bentley Memorial Hall



WWW.SANGATYOGA.CO.UK
HELLO@SANGATYOGA.CO.UK

Yoga classes



Mondays

12.30 pm Wickham Institute, Binsted
6.30 pm Bentley Memorial Hall

Wednesdays

6.30 pm Bentley Memorial Hall

Book now

www.juanagarciayoga.co.uk

Physiotherapy

In the centre of Bentley

by

Pippa Blizzard

Chartered Physiotherapist
MCSP HCPC BAHT AACF

07714 239644

physiotherapy@pippa-blizzard.co.uk

www.pippa-blizzard.co.uk



Cressida Mizen
REFLEXOLOGY

PROFESSIONAL & PROFOUND
THERAPY IN A TRANQUIL SETTING

**REBALANCE
RELAX · RESTORE**

TO BOOK, CONTACT
CRESS@CRESSIDAMIZEN.COM
07939 505727

WWW.CRESSIDAMIZEN.COM
Aylesfield Farm House,
Froyle Road, Shalden, GU34 4BY



Are you finding life difficult?

Counselling gives you an opportunity to explore any problems and issues with a Counsellor who will listen and help you explore and understand your feelings, thoughts, and behaviour.

We provide low-cost face-to-face, zoom video and telephone counselling.

Call or email us for a confidential no obligation enquiry

01420 89207

admin@altoncounselling.org.uk



British Psychoanalytic Council (BPC) member
British Association for Counselling & Psychotherapy
(BACP) accredited service
Registered Charity 279857



Oak Park Clinic

OSTEOPATHY

MASSAGE

REFLEXOLOGY

HYPNOTHERAPY

BABY MASSAGE CLASSES

1:1 PILATES

Telephone 01252 850 800
Book online www.oakparkclinic.co.uk

The Old Parsonage, Church
Street, Crondall, GU10 5QQ



BEN MACDONALD ASSOCIATES

Chartered Architects & Surveyors

- Extensions
- Refurbishment
- One off Houses
- Farm Building Conversions
- Listed Building Alterations

Total design and management
Service

**Hoggatts House, Kingsley
Bordon GU35 9NY
Tel. 01420 488556**

email:

benmacdonald_architect@hotmail.com

THORNE & CO

TAXATION CONSULTANTS

**Friendly, efficient service to deal
With your Accounts and
Self-Assessment Returns**

**Initial Interview Free
Evening appointments available**

01420 22998

Email: thornebentley@aol.com



AWARD WINNING LOCAL TOILET HIRE

Luxury Trailer Toilets
Luxury Showers
Single Portable Toilets
Accessible WC's & Urinals
Long Term Building Site Loos

01420 588 355
hello@loos.co.uk
www.loos.co.uk



Reliable, friendly garden services in
Bentley and surrounding areas.



- Mowing
- Hedges
- Weeding
- Planting
- General garden care
and maintenance

Please get in touch to discuss your
gardening requirements and I will be
happy to help.

David Green: 07594 123416
agreengardenerGU10@gmail.com

IAN HARDY TREE SURGEON

- All aspects of Tree Surgery
- Woodland Maintenance
- Hedge Cutting
- Land Clearance

t: 01252 706978
m: 07778 918007
e: ian.hardy@tree-art.co.uk
www.tree-art.co.uk

ADVERTISE YOUR BUSINESS HERE



CONTACT US
magazine@benbinfro.org



WWW.FCLAWNCARE.CO.UK

07793026809

LAWNCAREBYFC@GMAIL.COM

WE ARE A FAMILY RUN BUSINESS IN FARNHAM

OUR SERVICES

LAWN MOWING & TURFING

GARDEN MAINTENANCE

LAWN TREATMENTS

SCARIFICATION & AERATION

MARTIN CASHMORE FENCING LTD

SUPPLIER & CONTRACTOR

Our family run business was established in 1982. We are located just outside Farnham on the A325. We stock a large quantity of Fencing Materials, Oak and Softwood Sleepers, Gates, Wire Fencing, Tools, Fittings and much more.

We offer a prompt delivery service to a wide area.

We supply and install all types of Fencing and Gates, please contact us for a free quote.

01420 521040

sales@cashmorefencing.co.uk



www.martincashmore.co.uk

Unit 2, Halfway Farm, Dockenfield Road,
Bucks Horn Oak, Farnham, GU10 4LP





BEAUTIFUL MARQUEES
FOR EVERY OCCASION

For more information call us or visit our website

Tel. 01420 488477

www.FourSeasonsMarquees.co.uk

Jane Stockdale

HOME COOKING

FOR SMALL OCCASIONS

Dinners, Luncheons, Buffets,
Drinks Parties, Tea Parties,
Children's Parties,

After Service Gatherings.
Cooking for the freezer
and individual dishes.

SPECIALISING IN
CAKES AND CANAPES

**Please call 01252 723161
or 07775696918**

janestockdale01@hotmail.co.uk



Food Affair Catering

Caterers for any occasion

Delicious food beautifully
presented

Call Amanda on
Tel: 0778 732 6982

Email: foodaffair@hotmail.co.uk

www.food-affair.co.uk

ADVERTISE YOUR BUSINESS HERE

CONTACT US

magazine@benbinfro.org

Enjoy Brighter, Fresher, Dry Carpets & Upholstery

zero dry time

Dry Carpet, Upholstery & Hard Floor Cleaners

Dry carpet cleaning

Upholstery cleaning

Leather furniture cleaning

Hard floor cleaning

Wooden floor restoration

Get your
main room or
3-piece suite
cleaned

50% OFF

on all further
carpeted
rooms

Get your free quote

0800 180 4046

Our hard floor cleaning includes: tile, stone,
wood, all LVT including Amtico & Karndean

zerodrytimefarnham.co.uk

24/7
CALL OUT

ALTON PUMP SERVICES

**BLOCKED DRAIN?
PUMP PROBLEMS?
TANK NEED EMPTYING?**

We'll keep you flowing

- ✓ Blocked Drains
- ✓ Pump Supply & Service
- ✓ Drain Jetting
- ✓ CCTV Drain Survey
- ✓ Septic Tank Empty*
- ✓ Treatment Plant Installation

www.altonpumps.com

ACT NOW

24 HOUR CALL OUT

CALL: 01420 561661

SUPPORT
LOCAL
BUSINESS

GAVFRESH CARPETS

Local Bentley insured carpet cleaner
Dry extraction Carpet Cleaning - Dry within two hours
Houses from £70 and Flats from £50

07855 279308
gavfreshcarpets.com

Simon Sharpe **SE Electrical**

All electrical work carried out
Including
re-wiring, extra sockets, fault finding,
lighting, *commercial, PAT Testing,*
Fixed Wire Testing
Electric Car Charge Sockets

34 years' experience
Contact Simon - 24 hour call out

07720851398
or
01420 477542

C.S. EMBLING **THE CABINET REPAIR** **SHOP**

Woodlands Farm, Blacknest,
Alton, Hants GU34 4QB
Office Tel: 01252 794260
(Frensham, Surrey)

Antique Furniture Restoration
Modern Furniture Repairs
French Polishing & Other
Finishes
Insurance Claim Repairs

ROBERT MOODIE

at Clare Laughland Interiors
Master Upholsterer
since 1973



Is your sofa or perhaps your favourite chair
In need of a little loving care?
Don't push it aside or take to the 'tip'
Just give us a ring and we'll mend it.

Loose covers or fitted, or down to the frame
We will restore it, elaborate or plain
Fabrics and braids for us to enhance
Our craftsmanship's shown if given the chance.

Specialists in reupholstery of antique and
contemporary furniture
The Old Milking Parlour, Mellow Farm, Dockenfield,
Surrey, GU10 4HH - 01428 712886
robertmoodie@clarelaughland.co.uk

**ADVERTISE YOUR
BUSINESS HERE**

CONTACT US
magazine@benbinfro.org

Alpha decor

Guild of Master Craftsmen
Member

01252 724675

davidhorne52@btinternet.com

Complete decorating service

Interior and exterior painting

Wallpaper hanging

In business locally over 30 years

David Horne

BENTLEY JOINERY
Quality Purpose Made
Joinery

Sliding Sash Windows, Doors, Staircases,
Custom Made Furniture,
Oak Barns Made to Your Own Design

Unit 2A, Blacknest Industrial Park
Blacknest Road, Alton
Hants GU34 4PX

Tel/Fax: 01420 22252
Email: info@bentleyjoinery.co.uk

ROOKERY BARNES LTD

Your local supplier of oak framed barn-style buildings



The Complete Service

- ◆ Design
- ◆ Planning
- ◆ Groundworks
- ◆ Construction

Contact us now for a free
consultation

tel. 01420 488870

www.rookerybarns.com



WAYNE COLLINGBORN

07875 207208

w.collingborn@btinternet.com

**INTERIOR AND EXTERIOR DECORATOR & HANDYMAN SERVICES
PRIVATE & COMMERCIAL**

SERVICES AVAILABLE:

**Painting, Tiling, Carpentry, Wallpaper Hanging, Decking, Fencing,
Fascia & Gutter Cleaning, General Repairs, General Maintenance.**

CONTACT ME FOR A FREE ESTIMATE

(References are available upon request)

MJP Plumbing & Heating Ltd

Helpful friendly plumber.

Will do all the jobs that need doing from a tap washer to refitting your bathroom.

Servicing to replacing boilers. **Just ask, no job too small!**

Works with all systems – heating and plumbing.

Gas Safe registered

Contact **Mike** on **07768 844276** or email mike@mjplumbing.com

Simons Decorating Services

All aspects of Interior & exterior painting/decorating

Low cost joinery repairs with RepairCare system

Over 30 years' experience & fully insured

07747002595

simonsdecor@live.co.uk



Andrew Wood

Heating and Plumbing Engineer



- BOILER CHANGES
- BOILER SERVICING
- POWER FLUSHING



- CENTRAL HEATING SYSTEMS
- GAS INSTALLATIONS
- GENERAL PLUMBING

Gas Safe No. 15316

For free estimates or advice telephone: **Bentley (01420) 22637**

MICHAEL NEWSTEAD

Bathroom Installations • Small Plumbing Jobs • Plastering
Tiling • Exterior and Interior Decorating

30 Years' Experience

Free quotations **07960 893369**

michaelnewstead70@outlook.com

2 Southview cottages Bentley

R. A. CROFT LTD

Building & Joinery

**All Aspects of Building Work Undertaken
Listed, Refurbishments, Extensions
Buildings & General Maintenance
New Houses
Registered House Builder
Landscaping & Mini Excavator Hire**

**Unit 2A, Blacknest Industrial Park
Blacknest Road, Alton
Hants GU34 4PX**

**Tel/Fax: 01420 521152
Email: info@racroftltd.co.uk**



REG 234774

AB PLUMBING & HEATING SERVICES

**“PROVIDING PLUMBING
& HEATING SOLUTIONS TO
THE LOCAL COMMUNITY”**

**7 DAYS A WEEK FOR ALL YOUR
PLUMBING AND HEATING NEEDS
4 HOLMWOOD COTTAGES, BENTLEY GU10 5NF**

OFFICE :01420 525354,

MOBILE :077650 74638

**EMAIL: INFOABPLUMBING@AOL.COM/
INFOABPLUMBING@GMAIL.COM**



HAMMERTONDESIGN

www.hammertondesign.co.uk

LOGO | PRINT | DIGITAL

GRAPHIC DESIGN SERVICES

BENTLEY

Website: www.bentleyparishcouncil.gov.uk

The Memorial Hall

(Bentley Memorial Hall Association):
Chairman: Steve Fice Tel. 01420 22197
Email: bentleymemorialhall@gmail.com
www.bentleymemorialhall.org

Badminton Club: Martin Fox 07710 035913
martin.fox62@yahoo.co.uk

Garden Club Chairman

Andrew Croom-Johnson Tel: 01420 23157
Treasurer Patricia Cardy Tel: 01420 22325

District Council

Ken Carter, Brookfield, Station Road, Bentley GU10 5LA. 01420 22576 Email
kenc@comark-associates.co.uk

Parish Council

Chairman: Mr John Fuller 07768 558751
johnfuller@bentleyparishcouncil.gov.uk
Clerk: Emma Wadey 07795 326539
Email: clerk@bentleyparishcouncil.gov.uk
Facebook: [@bentleyparishcouncil](https://www.facebook.com/bentleyparishcouncil)
Instagram: [@bentley_parish_council](https://www.instagram.com/bentley_parish_council)
Bentley Memorial Hall, Hole Lane,
Farnham GU10 5LP
Parish Office Hours
Monday to Thursday 9am to 3pm

Bentley School

Headteacher: Katy Pinchess 01420 525010
Email: bentleyschoolptfa@gmail.com

Childcare

Dottie Tots: Karen 07387 576 307

Fête Committee

Chairman: Hugh Chissell, Greystones, Bentley
01420 23117

Flower Show

Chairman: Vanessa Remington 01420 525322

Phoenix Group: Linda Fuller 07891 825410
email: lindafuller1105@gmail.com

Bentley Rec Ground

Chair: Stephen Whowell
stephenhowell@bentleyparishcouncil.gov.uk

Joint Parish Organisations

Care Group (car service)

Bookings: 07775 458873

Secretary: 01420 590697

Girl Guides (at Holybourne)

Lucy Yendell 01420 80560

2nd Bentley Scout Group General Enquiries:

admin@2ndbentleyscouts.org.uk 07974377736

www.2ndbentleyscouts.org.uk

BINSTED

Website: binstedparishcouncil.com

The Wickham Institute

Chairman: Catherine Hadfield 01420 23146

Bookings: Ann Mann 01420 22388

email: annmann074@btinternet.com

www.wickhaminstitute.co.uk

Treasurer: Andrew Croom Johnson - 23157

County Councillor Mark Kemp Gee - 01420 563550, email - marknkempgee@aol.com

District Council

Ken Carter, Brookfield, Station Road,

Bentley GU10 5LA. 01420 22576

Email ken.carter@easthants.gov.uk,

David Ashcroft, 07966 511 868.

Email DavidAshcroft@easthants.gov.uk,

Parish Council

Chair: Alison Melvin, 07851 677 057

a.melvin@binstedparishcouncil.org.uk

Vice Chair: Chris Meade,

c.meade@binstedparishcouncil.org.uk

Clerk Lisa Spindler

Tel: 01420 520692 Mobile: 07483 310631

Email: clerk@binstedparishcouncil.org.uk

Website: Binstedparishcouncil.org.uk

Facebook: [@Binstedparishcouncil](https://www.facebook.com/Binstedparishcouncil)

Binsted School

Headteacher: Sharron Morton 01420 23200

Fête and Flower Show

Matt Arrowsmith

thebinstedfete@gmail.com

Tennis and Croquet Club Chairman:

Chair: Nial Dunne 01420 22922 nial.dunne@sky.com

Secretary - Graham Jones 07825 201 541

Website: <http://e-voice.org.uk/btcc/>

Growmore Club Secretary:

Reita Fisher 01483 570996

Bentley and Binsted Police

Police Rural Beat Officer: Jess Hornsby

Alton Police 101

Binsted Cricket Club

Chairman: John Dineen 01420 617814

or mob: 07747878392

Binsted Football Club

Secretary: Tim Winkworth binstedfootball@gmail.com

Friends of Binsted School (FOBS)

[@FOBSBinsted](https://www.facebook.com/FOBSBinsted) 01420 23200 or


fobs.binsted@gmail.com

Chairman: Alice Cowie

May Services

7th May **8am** Froyle Holy Communion
9:30am Bentley Morning Worship
with Children's Church 

14th May **9:30am** Froyle Holy Communion
11am Binsted Morning Worship
5pm Bentley Live@5 Big Praise 

21st May **9:30am** Bentley Holy Communion
11am Froyle Morning Worship
4pm Binsted Messy Church 

28th May **9:30am** Binsted Holy Communion
11am Kingsley Holy Communion
3pm Bentley Pentecost Praise & Picnic 
6:30pm Froyle Evensong

4th June **8am** Froyle Holy Communion
9:30am Bentley Morning Worship
with Children's Church 
11am Oakhanger Holy Communion

 **Family Friendly**
The flower indicates where our services are catered for children and families.

www.benbinfro.co.uk
admin@benbinfro.org
01420 23339



@benbinfro_churches

