

DECEMBER 2022 & JANUARY 2023

BENTLEY AND BINSTED

PARISH MAGAZINE

FEATURING

Youth Update.....	4
Elms	16
Binsted Parish Council	20
School News	27-29
Sudoku	30
Smash! Crash! Tinkle!	32



Vicar of Bentley, Binsted and Froyle: Revd Matt Boyes

matt@benbinfro.co.uk

C/O Church Office, St Mary's Church, Bentley, Farnham, GU10 5NA

Website: www.benbinfro.co.uk

Assistant Priest – Christopher Ogilvie Thompson Tel: 07776 178690
email: christopherot@me.com

Benefice Administrators – Lucinda Edwards (admin@benbinfro.org) and
Gemma Ball (admin@benbinfro.org)
01420 23339

Honorary Assistant Minister – David Perryman, Treetops, Upper Froyle
Tel. 520647 david.perrypeople@gmail.com

Parishes Prayer Chain – Nick Carter
01420 489122 or nick.carter1945@outlook.com

Pastoral Care Team – Nick Carter
01420 489122 or nick.carter1945@outlook.com

Anna Chaplain – Rev. Nicky Smallwood,
annachaplain@benbinfro.co.uk, 07765 058593

Readers – Harold Fish, 6 Bonners Field, Bentley. 22947

Bentley: St Mary's Churchwardens:

Jill Kiely, 11 Broadlands Close, Bentley, GU10 5LE - 22735

Nick Caddick, Tanners, GU10 5NE - 23229

Binsted: Holy Cross Churchwardens

Cathie Weldon, Malms House, GU34 4NU – 01420 525276

Stella Croom-Johnson, 4 Foresters Cottages GU34 4PS – 07740 861256

Youth Leader - Gemma Ball - gemma@benbinfro.co.uk

Worship Leader - Sam Ball - sam@benbinfro.co.uk

Parish Magazine

Articles and Advertising: Any copy or advertising enquiries should be sent to Gemma Ball on the **5th** of the month, by email (magazine@benbinfro.org)

Editor: Benefice Team

Designer: Mike Hammerton

Treasurer: Steve Fice, 01420 22197 steve.fice@btinternet.com

Distribution: Bentley – Harold Fish Tel 22947

Binsted – Alan and Anne Shelley Tel 520960

Benefice Letter

The last Sunday in November is Advent Sunday and marks the beginning of the new Church year. The word "adventure" is connected with Advent and means, in Latin, "a thing about to happen." Hopefully, we are excited by adventures and although we do not know how things will turn out when we set out on them, you need to have an open and accepting spirit to get the most from them.

For the people of the Bible, there were hints in prophecy about what the Messiah, the Chosen One of God would do but no idea when this was likely to happen. Some of the prophecies in the book of Isaiah were written 600 years before the birth of Jesus. That's a long time to wait for an adventure! Many disasters and setbacks would occur in the intervening years, and some would doubt if it was ever going to happen.

Then around 5BC (not year 0 as some monks got their calculations wrong!) a young woman was told she would get pregnant and that the baby born to her would be the Saviour of the world. 9 months of waiting later, Jesus is born. He was God's Chosen One, but was not born in a palace or to famous parents, but his first bed was an animal feeding trough. His birth was announced to some nearby shepherds by angels who told said, "Glory to God in the highest heaven, and peace on earth to all whom God favours." (Luke 2:14).

We are still waiting, despite all the saccharin Christmas movies about the spirit of Christmas, for the fulfilment of that peace on earth. As Christians, we are called to be peacemakers and to pray for God's kingdom to come on earth as it is in heaven in the Lord's Prayer. Sometimes it is tempting to wonder when this will ever come. But we know that what God has promised, he will do. He is waiting for all to be given the chance to respond to his offer of peace and favour individually and to turn from selfishness and destructive patterns of behaviour.

As the weeks of Advent pass, may you have an adventure! As we prepare for the celebration of the birth of Jesus may we also begin to get glimpses of God's bigger plan to put everything right in his world. May we not lose hope, but see the triumph of God's love for us at work in our lives and our communities. May we get excited by the prospect of the feast of Christmas and the feast of God's Kingdom to come and and is dawning among us, turning the unworthy into precious daughters and sons and healing division and pain.

You and your family will be very welcome to come along to any of our Christmas services and we look forward to celebrating the season with you. The details of the services are included in this magazine.

It remains for me to sincerely pray that you will have an amazing Christmas and a peaceful New Year.

Matt Boyes

Vicar of Bentley, Binsted and Froyle

In this issue

Youth Udate	4
Anna Chaplain	5
Scouts Craft Fair	6
Bentley Memorial Hall	7
Church Register.....	8
Memorial Hall Refurb	8
Coral Singing	9
Binsted Christmas Fair ..	10
Binsted Coffee Shop.....	11
Bentley Garden Club.....	11
Messy Church	12
Advent Calendars.....	13
Christmas BenBinFro.....	14
Colouring sheet	15
Elms	16
Alton FoodBank	17
Curtis Museum & Allen Gallery.....	18
Your Community	19
Binsted Council	20
Weather Statistics	22
Wickham Institute	23
Church Project	24
Bentley 100+club.....	25
Waymarks	26
Binsted School News.....	27
Bentley School News	28
Sudoku Games	30
Natural History Society .	31
Smash! Crash! Tinkle!.....	32
Shepherds Fields Poem.	35
Meet The Councillor.....	36
Sudoku Answers.....	36
Advertisements	37
Local Contact Details	55
Services.....	56

Youth Update

This time of year is brilliant for organising themed activities like pumpkin carving and bonfire nights, and we have been doing just that! At four:twelve in October we each carved a pumpkin which was an evening of creativity, fun and lots of pumpkin guts! Take a look at the pictures to see some of our young people's creations.

At the start of November our older teenagers loved meeting up with the United youth group for a bonfire night. There were hot dogs and marshmallows, plus we sang a few songs round the fire. We had a really relaxing evening together.

We are now, of course, in the lead up to Christmas! There is so much to look forward to in this season. For our young people we have a Christmas party with United on the 4th December, a trip to Flip Out on the 9th December and not forgetting the much-loved Christingle service and Live@5 services aimed towards our younger congregations. As well as all this, me and Sammy Wammy will be uploading our daily advent videos again. We have been a lot more ambitious this year and we're really excited for our 'Advent Road Trip'. Videos will be available from 6am each morning through December for you to watch when convenient for you!



The magazine and Christmas card will have all the information you need about our Christmas events and services at BenBinFro. We can't wait to welcome you into our doors whether you are 0 or 110, and whether you're a regular or new to our churches – we can guarantee a warm welcome.

Gemma Ball

Pastoral Assistant (Youth) & Administrator
gemma@benbinfro.co.uk

Anna Chaplain



Anna Chaplaincy continues to be an extremely important ministry in this benefice, reaching older people in our community: those still living at home, as well as those living in one of our two care homes in Bentley. At the time of writing, we're looking forward to our Remembrance Services next week, and our Carol Services a few days before Christmas. Back in the summer we started a regular prayer group for the residents at Pax Hill – which offers a lovely opportunity to share thoughts and discussions, as well as to pray together for those on our minds.

So, it'll be with a heavy heart that I shall be handing over the baton at the end of the year - to a new Anna Chaplain – to take this ministry and amazing team into the New Year and on to the next chapter. It's been a wonderful 3½ years, meeting many many inspiring people who have so much to share with, and teach, the rest of us about life.

I'd like to thank our fantastic team of Anna Friends who continue to serve faithfully in this community: Liz Carey, Nick Carter, Steve Fice, Marilyn & Richard Greenway and Sarah Roberts.

If you know anyone who would appreciate a phone call or visit from myself or one of our Anna Friends, please get in touch.

May God bless you and give you His peace

Nicky

Rev. Nicky Smallwood (Anna Chaplain)

annachaplain@benbinfo.co.uk

07765 058593



2ND BENTLEY SCOUTS



CHRISTMAS CRAFT FAIR



THURSDAY
1ST DECEMBER
6.30PM - 8.30PM

**FESTIVE RAFFLE
& REFRESHMENTS**



**KINGSMILL PAVILION,
SCHOOL LANE, GU10 5JP**



**A WONDERFUL SELECTION OF
CHRISTMAS GIFTS AND TREATS
FROM LOCAL CRAFTSPEOPLE**

FREE ENTRY

ALL PROCEEDS GO TOWARDS 2ND BENTLEY SCOUT GROUP



Join our **Christmas celebration**

**Bentley Memorial Hall
by the village
for the village**

Donations to support our hall

*Christmas nibbles, fun quiz
and mulled wine*

7pm – 9pm

Friday 23rd December



**Enjoy singing Christmas
songs with the folk who sang us into the
Jubilee celebrations!**



Church Register *September/October*

Bentley

Friday 30th September Funeral of Dennis Roy Thompson

Saturday 15th October Wedding of Emma and Frazer

Thursday 27th October Wedding of Eleanor and David

Saturday 29th October Wedding of Charlotte and Simon

Froyle

Thursday 13th October Interment of Ashes of Maisie Pritchard

Friday 21st October Funeral of Caroline Bush

Refurbishment at Bentley Memorial Hall

The Bentley Memorial Hall Association is the charity responsible for managing and maintaining the Memorial Hall. It has started a major refurbishment project for the upper meeting room, known as the Hugh Barton room. After many years of almost no use, the Bar is being removed to make more space. A toilet will be installed to allow the room to be used at any time, including when the Nursery School is in action. The small kitchen area will also be improved.



The room will be newly decorated and re-carpeted to freshen up the whole ambience. A separate access is also being improved to allow direct entry from the West side of the hall for an easier route upstairs.

The new room will be fully finished by early December and available for bookings during daytimes or evenings as shown on the hall calendar on the website. Do pop in during our Saturday Café mornings and you can have a sneak preview to see work in progress.

To see all activities and events at the Memorial Hall see the web site at <https://www.bentleymemorialhall.org>

Carol Singing Binsted Village



Members of Binsted church will be singing carols round the village on

Tuesday 20th December

Calling singers of all ages and abilities to join us outside the CHURCH from 17.45 with a view to setting off at 18.00. After singing for about an hour we are hoping to finish at the Binsted Inn soon after 19:00 where everyone is welcome to stay on and perhaps have a drink

Please wear warm clothes and bring a torch
Any monies collected will go towards the Diocesan Training Centre (DTC) in Karamoja which provides training for lay people to lead the church in a deprived region of Uganda.



Binsted Church Christmas Fair



Saturday 3rd December 2022

2-4pm



Please support this Church community event as funds will be going towards the continuing upkeep and vital repairs for Holy Cross Church.

The stalls will be spaced out between the Wickham Institute and inside the Church

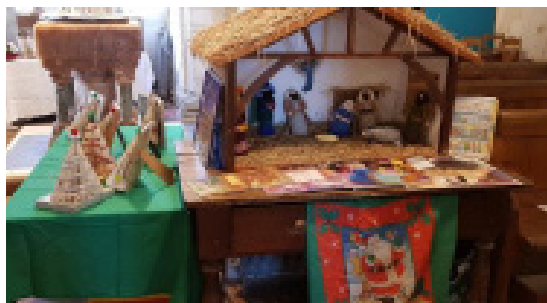
There will be the regular favourite stalls and more including a children's book stall and Santa's grotto [organised by FOBS]

Donations of homemade cakes, chocolates, old jewellery, mince pies, nearly new gifts and raffle prizes are needed....and any extra pairs of hands

Christmas wreaths will be available for Pre-order

Small size £15 Medium size £20 Large £25

Please contact angela1dunne@sky.com or 01420 22922





THE WICKHAM INSTITUTE

(Binsted Village Hall)



BINSTED COFFEE SHOP

WEDNESDAYS 10am – 12noon (during term-time)

PLEASE COME ALONG AND JOIN US

COFFEE, TEA, HOME MADE CAKES ONLY £2

CHILDRENS' TOYS AVAILABLE

ALL WELCOME

WI-FI NOW AVAILABLE



ALL COVID REGULATIONS IN PLACE AT THE TIME WILL BE OBSERVED

BENTLEY GARDEN CLUB



AGM and Christmas social – Tuesday 6th December 2022

All club members are invited to our AGM and Christmas get-together which will take place on Tuesday 6th December 2022 at 8pm in the Denis Smith Room at the Bentley Memorial Hall.

All food and drink will be provided by the committee and there will also be a grand Christmas raffle, so do please come and celebrate our much delayed (due to Covid) 50th Anniversary as Bentley Garden Club.

Due to uncertainty over the club's future and the position of member numbers becomes clearer, the programme for 2023 will not be available at the AGM but hopefully be available at our first regular meeting of 2023 on 7th February 2023. We will therefore not be collecting renewal subscriptions at the AGM.

Hope to see you all on 6th December.



Sunday 15th January 2023

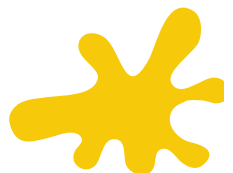
4-6pm

Binsted Village Hall

(Wickham Institute)

We're really excited to be back in person! Join us for all age arts and crafts, activities, stories and songs.

Supper will be provided.



Advent Calendars

How will you take part in this Advent season?

Binsted's Advent Windows

For the fourth year running, Christmas excitement will start with the Advent Window Trail around the village. Binsted School will kick off with a big window on December 1 and Holy Cross Church will complete the colourful trail on December 24. Look out for windows lit-up all around the village, revealed day by day as we prepare for Christmas.

Benefice Advent Cards

A card a day with a bible verse and short thought running from the 1st to 31st December. Please contact the church office if you can't get hold of one and it will be personally delivered to you.

Sam and Gemma's Advent Road Trip

An online advent calendar made for families - join Sam and Gemma from the 1st to 25th December on our YouTube channel and follow them on their Advent Journey.



Christmas at Ben Bin Fro



We have so much going on in our Benefice at Christmas, it's almost impossible to include every service on the back of the magazine as usual – what a great problem to have!

Please see our extra Christmas services and events listed below, and on the back of the magazine you'll find the usual Sunday services (plus Christmas Eve!) You'll also find our extra Christmas services inside our Christmas card for ease.

Thursday 15th December **6pm** Oakhanger Carols
(finishing with mulled wine in the church)

Sunday 18th December **6pm** Bentley Carols in the Car Park★
(Bentley Memorial Hall)
6:30pm Froyle Carol Service

Tuesday 20th December **6pm** Binsted Carol Singing★
(Meet at the church)

Thursday 22nd December **5pm** Froyle Flying Carols★

Christmas Eve **4pm** Bentley Christingle Service★
10pm Binsted Midnight Communion
11pm Bentley Midnight Communion
11:30pm Froyle Midnight Communion

Christmas Day **9:30am** Bentley Family Christmas Day Communion★
9:30am Binsted Christmas Day Communion
11am Froyle Christmas Day Communion
11am Oakhanger Christmas Day Communion

Sunday 1st January 2023 **11am** Binsted New Year's Day Service

★ Especially Family Friendly

Children, young people and families are welcome to all of our services at BenBinFro. If you are new to our benefice, the star indicates where services are especially tailored for children, young people and families.

Colouring
sheet





I have recently bumped into several elm trees. Not literally, fortunately, but unsuspectedly. In places I thought I'd never again see one. I am confirming what I have heard said; namely, that elms may already be as common in the countryside as once before they were. What's different is the demography. They are mostly youngsters, less than 50 years old. And most of them are growing in hedgerows, not standing tall and proud as their forebears once did. There is no census of trees that can confirm this one way or another but I have found single trees all around the parish. This is good news in the context of the near extinction of elm by Dutch Elm Disease.

Elms can be recognised by their asymmetrical leaves that are toothed around the edges. The English elm has smaller, rounder leaves than wych elm. Another clear distinction is that English elms most often propagate by producing runners, i.e. clones, while the wych elm usually spreads by winged seeds. The latter method is better, of course, for a robust gene pool, provided there are ample opportunities for sexual partnership.

Despite its name the English elm fails to qualify for resident status, as it is believed to have been introduced by Neolithic farmers. This may seem a picky distinction to you, but I could not possibly comment.

Elms used to be associated with melancholy and death, probably because the trees can drop dead branches without warning. Elm wood was also the preferred choice for coffins. Hence an old saying '*Elm hateth Man and waiteth*'. This is not to say that it was nowhere welcome, particularly around Ascension Day. The Lichfield Cathedral choristers, to this day, place elm twigs above doorways in the Close.

Dutch elm disease is caused by the fungus *Ophiostoma novo-ulmi* which is spread by the elm bark beetle. The usually fatal disease got its name from the team of Dutch pathologists who carried out research in the 1920s. It was accidentally imported into the UK from Canada in the late 1960s. Elm bark beetles breed in the bark of cut, diseased or otherwise weakened trees then disperse to healthy specimens where they feed. As they feed, the spores of *O. novo-ulmi* are

introduced into the xylem (channels for water and nutrients) of the healthy tree, releasing toxins and causing the vessels to block and the tree to wilt and die.

Many birds and some small mammals eat elm seeds and the leaves provide food for the caterpillars of many moths, including the peppered, light emerald and white-spotted pinion moths. Caterpillars of the white-letter hairstreak butterfly feed on elms and the species has declined dramatically since Dutch elm disease arrived in the UK.

There is no clear way back to a time before the disease but there are disease resistant strains now. We planted one such at Rowledge School two years ago. But we would need millions. Otherwise we must be vigilant as the wild trees slowly and tentatively grow back. The beetles seek out mature trees, at least twenty years old. We can only wait and watch.

..and on a separate note..

Members of the public may request that Hampshire County Council plant trees on the highway. This can be on your road, outside your house or any other suitable highway location. They will endeavour to accommodate all tree planting requests if appropriate.

There are currently no charges for this service.

To apply go to <https://www.hants.gov.uk/transport/roadmaintenance/roadproblems/tree-planting>.

I'll be happy to help. Just drop me a line at binstedtrees@gmail.com.



We had great support during the Harvest festival, so our warehouse is full of the basics. These are the items we are short of in the lead up to Christmas:

- Hot Chocolate
- Chocolate spread
- Marmite
- Tinned custard
- Sponge puddings (long life)
- Christmas biscuits
- UHT milk
- Coffee
- Fruit juice (long life)
- Washing up liquid
- Cleaning spray
- Liquid soap
- Washing powder and laundry conditioner
- Shampoo and hair conditioner
- Deodorant
- Shaving foam and razors

Above is the list of items the foodbank is currently asking for.

We have collection points in Bentley and Binsted churches, there is also a collection point in Froyle village hall, or you can take your donations to Alton Maltings where there is a drop box outside the main door.

If you are in need yourself, please do visit <https://alton.foodbank.org.uk/alton-get-help/> where there is advice on how to get help.

CURTIS MUSEUM & ALLEN GALLERY

(01420 82802)

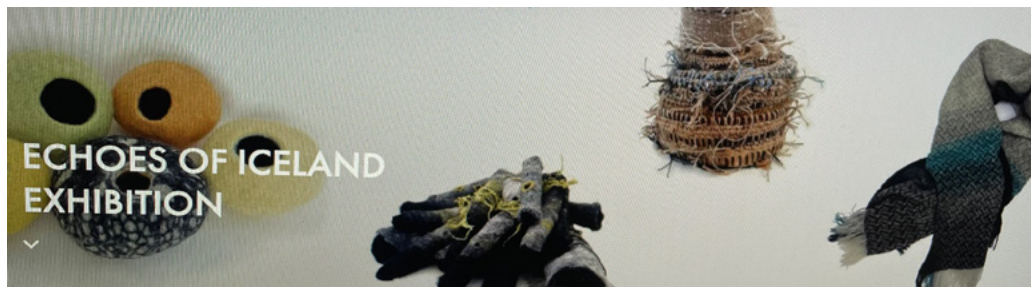
OPENING TIMES

Tuesday to Sunday

Curtis 10am – 4.30pm. Allen 10.30 – 4pm

www.hampshireculture.org.uk/curtis-museum

www.hampshireculture.org.uk/allen-gallery



ALLEN GALLERY EVENTS EXHIBITION

Echoes of Iceland

In 2019 a group of professional textile artists spent the month of May at the Icelandic Textile centre in Blönduós on the northern coast of Iceland. They were there to explore the landscape, the culture, its textile heritage, local materials and the current production and use of textiles. In using the facilities available at the centre they were able to make a wide-ranging, extraordinary body of work in response to their findings. This exhibition is about that trip. It includes work made while in Iceland and pieces that have been constructed since. The work includes felting, weaving, knitting, stitching and basketry techniques, much of it using found and local materials. The group are: Delia Salter, Tara Kennedy, Annette Mills and Jennifer Jones.

5th November – 15th January 2023 FREE entry.

TALKS

sponsored by the Friends of the Curtis Museum & Allen Gallery

(No talk in December or January.)

How Safe are our Medicines? From Curtis to Covid

by John Taylor.

9th February 2023, 7.30pm FREE, donations welcome

G F Watts: England's Michelangelo

A talk by Jane Turner.

9th March 2023, 7.30pm FREE, donations welcome

CHRISTMAS AT THE CURTIS MUSEUM

We sell an attractive range of books, souvenirs and toys. Why not pop in and bag a few stocking-fillers. There will be a Yuletide trail to follow from 18th November into the New Year.

Alton Papers

No. 26 in this occasional series is at the printers – it should be available before Christmas. Items in this issue include

The Gold Family of Chawton by Violet Hunt

Did Victorian Altonians move around? by Steve Millar

3 and 5 High Street, Alton by Jane Hurst

The Donkey Ladies by Ken White.

Alton Papers are available from the Curtis Museum, priced £3.

YOUR COMMUNITY NEEDS YOU!

DO YOU HAVE A FEW HOURS TO SPARE FOR
BINSTED BENTLEY & FROYLE CARE GROUP?



The Binsted Bentley & Froyle Care Group provides a car service to take local residents to medical appointments either locally or further afield such as Basingstoke, Guildford, & Frimley etc.

The service relies entirely on volunteers & we are always looking to welcome more drivers & coordinators.

Coordinators take calls from clients & arrange the transport to meet their requirements. Drivers take the clients to their appointments. There is no regular commitment required as a driver; when asked you simply offer to help on that occasion if you can or decline if you cannot. You can choose to do either the longer journeys or simply the shorter ones.

Expenses are paid to all volunteers – telephone expenses for coordinators & mileage expenses to drivers.

Our clients do appreciate the help that the car service provides.

If you feel able to help as a volunteer in any capacity, no matter how little time you feel you have, it is a great way of supporting your community.

The telephone number to contact the Binsted Bentley & Froyle Care Group to make a booking is 07775458873

Any other queries relating to the Care Group should be addressed to the Secretary, Ellen Saunders on 01420 590697

Smartening up the neighbourhood!

Binsted Parish Council is very pleased to have completed several projects to smarten up public areas around the parish.



In Binsted, we have resurfaced our car park near Binsted church, put up a new parish map board at the Wickham Institute, and a new notice board near the bus stop on The Street. We have also installed three new poo bins: one in Station Road, Bentley, one on the footpath towards the Wickham in Binsted village and one at Binsted Recreation grounds.



We're also getting work underway to re-surface the muddy patches of Bridleway 41 at Blacknest Fields, and to clear some of the overhanging holly on that bridleway as well.

After that, completing the long-awaited refurbishment of the old phone box in Binsted is next on the list. Never an idle moment, eh?!

Lisa Spindler, Parish Clerk

clerk@binstedparishcouncil.org.uk | **07483 310631**

What's happening with the South Downs Local Plan?

In November, the South Downs National Park Authority (SDNPA) updated parishes in the South Downs about its Local Plan Review, at a workshop which Binsted parish councillors Val Moynan and Alison Melvin attended.

SDNPA decided in May this year to review its 2019 Local Plan, because having an up-to-date local plan and a five-year housing-land supply protects the area from speculative planning applications, particularly for housing. SDNPA is keeping the key elements of its existing plan (including its spatial strategy, landscape led approach to design and dark night skies) and is ensuring the plan aligns with its existing corporate priorities (nature recovery, climate change and of providing '*a national park for all*').

Since May, the SDNPA has run a 'Call for Sites' for various land uses including homes, jobs, renewable energy, and 'Local Green Spaces'. It is now assessing the submissions received, and working on other evidence, such as a water cycle study. Next, SDNPA will be asking parish councils to fill out a form about facilities in their parish, such as internet and EV charging points. For parishes such as Binsted, whose main settlement is in the NP, it is introducing 'Parish Priority Statements', to give an opportunity to summarise what our local community wants for our parish - similar to (but much shorter than) a Neighbourhood Development Plan.

SDNPA will finalise the timetable for its Local Plan Review in December. It noted that this Review is being prepared at a time of great change the government's planning policies – in May the government published its 'Levelling Up & Regeneration Bill' and subsequently announced (but then scrapped) the new 'Planning & Infrastructure Bill'.

New! Hampshire County Council roadside tree planting

As part of its climate change action plan, Hampshire County Council (HCC) recently introduced a new scheme whereby members of the public may request that HCC plant trees on the roadside outside their homes, if suitable verges exist. There are currently no charges for this service, and the scheme includes an offer by HCC to water the new trees in the first season after planting (although there will be a limit on the number of watering visits.)

The application form and full details about the application process are online at <https://www.hants.gov.uk/transport/roadmaintenance/roadproblems/tree-planting>.

Alison Melvin, Parish Council Chair
a.melvin@binstedparishcouncil.org.uk | 07851 677057



October 2022

WEATHER STATISTICS



Temperature



Daytime maximum

20.9°C (29th) to 15.6°C (14th)
Only 1 day above 20°C



Nighttime minimum

-1.1°C (11th) to 12.9°C (4th)
9 nights above 10°C and 3 nights below 0°C

Rainfall



Total for month

2.85 inches (72.4 mm) over 25 days



Wettest days

0.67 inches (17.0 mm) (23rd)

Wind



Dominant wind direction

South West



Maximum gust

21 mph (5th)

Parish Weatherman



THE WICKHAM INSTITUTE (VILLAGE HALL), BINSTED

www.wickhaminstitute.co.uk



The Wickham Institute 100+ Club

As promised, listed below are the lucky winners of the November 2022 draws:

November 2022

1st prize Andrew Croom-Johnson

2nd prize Sally Read-Ward

3rd prize Tricia Knight

Details of the December 2022 draw will appear
in the next magazine.

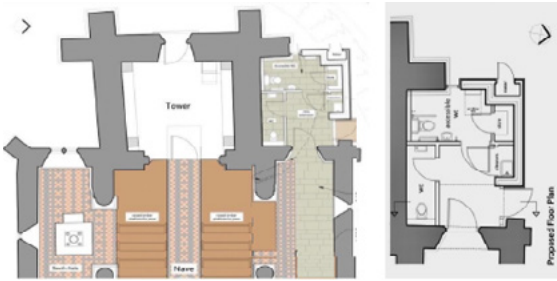
Remember each number only costs £12 (£1 per month)
and you have three chances to win each month!

50% of the monthly purchase price of each number goes
in prizes and 50% to the running costs of The Wickham
Institute. The more people that participate in the 100+
club, the more money that is paid out in monthly prizes.

If you would like to participate an application form can be
obtained from Andrew Croom-Johnson on 01420 23157
or email a request to Andrew at
treasurer@wickhaminstitute.co.uk.

Keeping You Informed: Update on the Holy Cross Church Toilet Project

Last February, the toilet project committee and PCC confirmed the location of the proposed toilet block which will be outside the NW corner of the church. Since then, the church architect has been refining the design of these loos, and this month the project committee and PCC approved these initial designs.



The new outside door will provide disabled access as well as being an emergency exit.

We aim, if possible, to keep the new extension in the style of the current external north wall with Horsham slate roof and stone wall. As it's at the NW corner

of the church, the people who will see this extension the most will be our new vicar and his family!



We now need to move the project onto the next stage of the process with further drawings, material examples, quotes and then planning applications. There are likely to be many tweaks to the designs as the project progresses, and everything will be reviewed again before applying for the required Faculty. One consideration will be

the need to re-configure the west end of the church to facilitate better disabled access to the new toilets and safe provision of refreshments.

It's a slow process – so don't expect the loos to appear over-night!

If you would like further information, please do talk to one of the churchwardens and everything will be reviewed again by the PCC before applying for the required Faculty.



BENTLEY MEMORIAL HALL 100+ CLUB

Congratulations to the Winners

The winners for the December and January draws
of the Bentley Memorial 100+ Club are:

DECEMBER 2022

1st Prize Hew & Jean Pike

2nd Prize Hugh & Suzanne Chissell

3rd Prize Cathy Smith

JANUARY 2023

1st Prize Chris Holmes

2nd Prize John & Linda Fuller

3rd Prize Bruce & Lizzie Powell

If anyone is interested in contributing regularly towards the running of the Bentley Memorial Hall, with a chance to win prizes every month, you can join the 100+ Club. Please contact us on bentleymemorialhall@gmail.com for further information.

WAYMARKS...

How to reach Blacknest Fields via the Rights of Way network

Many of you already know about Blacknest Fields, which is just a few fields North of the Jolly Farmer off Blacknest Road. Historically, the 8 acres at Blacknest Fields were Binsted Parish's original Recreation Ground and are a registered Village Green. They were once at the centre of a thriving community at Blacknest, which in Victorian times had two pubs and a church. Until recently, it was a forgotten asset, with no public access and used for horse grazing. Since 2021, Binsted Parish Council has been reimagining the site as a place dedicated to nature recovery and low-key community recreation, with the help of local volunteers and financial grants that have been obtained from a variety of sources. For more information, guidance on how to access the site and photos of some of the wildlife recorded there, you should visit the Blacknest Fields Community page on Facebook.

It is a lovely, peaceful spot with plentiful interesting wildlife, so I asked myself how you could get there from various parts of the parish, using the Rights of Way network (with a little help from the forest tracks in Alice Holt's Lodge Inclosure). The site lies on Bridleway 41, which runs from the Blacknest Road up to Bucks Horn Oak. This bridleway has

a few sections which are prone to getting very waterlogged and muddy, so there is a project in the next few months to improve those sections, which will be most welcome and will make the walk from Bucks Horn Oak much nicer in winter.

To the north the key route is Footpath 44, which runs from Bentley Station all the way to Rowledge and is partly on the route of Shipwright's Way. A couple of hundred metres from the A325 crossing in Bucks Horn Oak, on the western side of the main road, there is a short forest track which heads south and joins Bridleway 41. So access is fairly straightforward from Bentley Station (about 2.5 km) and Rowledge (about 3km).

To the south, Footpath 40 runs from River Hill, over a couple of bridges, to emerge almost opposite the start of Bridleway 41 on Blacknest Road. Take care if you use this footpath – the official route does go through someone's garden! At the River Hill end, it joins up with Footpath 71, which runs south along the edge of Blacknest Golf Club and through the Forest to join up with Bridleway 62 and Footpath 72, which connect with Wheatley and The Straits to the west (about 3.5km) and Frith End to the east (3-4km, dependent on route).

From Binsted, Footpath 35 at The Street joins Footpath 55, which heads

Northeast to cross the Blacknest Road at Broadview Farm and then turn right after about a hundred metres, on to Footpath 43 which joins Footpath 44 (Shipwright's Way) about 700 metres further on. Turn right there and it is as described in paragraph 3, the route from Bentley. In all, a total of about 4.5km.

I haven't covered routes from every part of the Parish, but it is clearly possible to achieve this. To guide you, I heartily recommend the Binsted Yellow Map available from the Binsted Inn and

the Parish Council office and also the Ordnance Survey App for your smartphone, if you prefer an electronic solution! Either way, try to spend some time at Blacknest Fields and experience this new community greenspace.



School News - Binsted CE Primary

At Binsted we believe in the Christian values of Faith, Hope & Love.

Our second class at Binsted is Rowan Class which is a Year 2/3 class. We are always super proud of everything that our children achieve in school and we also encourage parents and children to share their successes outside of school with us. We have had two children in Rowan Class who have worked hard to get a Blue Peter Badge this term and our absolute star is Alba. Alba has raised well over £1000 for Children in Need by swimming 5K. Alba completed this event only weeks after swimming a length for the first time ever! She has had a lot of coverage in the local press for this achievement and we really are super proud of her.

Binsted School has a long history of pupils leading their own fundraising events to raise money. Our children enjoy organising cake sales, selling toys and homemade items all to raise money for charities that they believe in. All the children at Binsted have a strong christian ethos and show this constantly in the care and compassion that they show.

For Christmas our children have worked hard to collect items for Christmas Shoe Boxes for Samaritan's Purse. These were sent to children to share the love and joy of Christmas!

<https://tinyurl.com/ycvrhh5p>

Key Stage 1 Updates

We thought it would be nice for each class to showcase what they have been up to in their recent learning in the Parish magazine. This month it is the turn of Key Stage 1. Key Stage 1 starts in the second year of primary education, after the final year of the Early Years Foundation Stage, which is sometimes called Reception year just to be confusing! Children are usually five on arrival and these two years are the transition from the playbased learning into more formal whole class style learning. There is a huge focus on reading and phonics. The transition from early reading into fluency is absolutely amazing and a real joy to support as teachers.

Year 1

In Year 1 we love to be as hands-on as possible when we are learning. Our topics give us great opportunities for learning fantastic skills through building on children's own experiences through role play. Within our history topic we have been learning about the Great Fire of London. Children have pretended to be Londoners in 1666, fighting or fleeing the Great Fire of London. This helped them to imagine how people would have felt and reminded us about how different life was back then.

As a Church of England school, our Christian values thread through everything we do with 'Love, Courage and Community'. In the UK all maintained primary schools are expected to teach Religious Education and to have a main focus



on teaching about Christianity. In addition, we choose a second religion for each year group. In Key Stage 1, we teach the children about Judaism. In the autumn term Year 1 have been finding out about the Jewish festival of Sukkot. During the festival, Jewish people build Sukkahs, which are outdoors shelters where they eat their meals, to remember how their ancestors lived in the desert after being released from slavery. This gave us the wonderful opportunity to go out into the school woods to collect sticks, leaves and branches to create a Sukkah in our classroom and eat our snacks in the tent indoors. Hopefully the children will always remember this experience to cement their learning.

Year 2

Our Year 2 class this year are very enthusiastic scientists. Last half term we enjoyed growing our own bean plants and observing how quickly they grew. We particularly loved setting up our own experiment to see what plants need to grow. This half term Year 2 has been enjoying learning about their new Science

topic: living things and their habitats. We discussed the question as a class "how do we know that we are alive?" before sorting some pictures into two categories for living and non-living things.

Year 2 is excited to learn more about living things and their habitats. We plan to observe different animal habitats by going on a nature walk around our school, recording how many different animal habitats we can spot and what is living inside of them!

Both Year 1 and 2 teachers have been really delighted by how quickly children got into learning after the summer. It is always brilliant to see pupil engagement in their learning and how quick they are to get involved with new topics. Every day there is plenty of 'awe and wonder' in the Infants! We are looking forward to Nativity plays and the excitement of Christmas, but ensure that we keep reading and learning across the curriculum all the way to the end of term, when we will all be ready for a rest and recharge over the holidays!



Sudoku Games

Sudoku game EASY

4		2						7
				8		4	2	
	5		3		2			6
	9			3			5	
5		3		6		7		8
	7			1			6	
9			4		6		3	
	1	5		7				
2						8		9

All you need to do is to fill in all of the squares in the puzzle so that each column of 9, each row of 9 and each 3 x 3 square includes every number from 1–9.

No prizes – just a huge amount of satisfaction!

Sudoku game MEDIUM

		7	8	6	1			
		8			3			
5	6			9				1
1				7			8	5
			3	4	5			
6	3			1				7
	5			2			9	8
			6			5		
			5	3	7	1		

Sudoku game HARD

6	8				1			3
		7			4			
			8	2				
8	7				9	2		4
	4		3		2		8	
2		3	4				9	6
				3	6			
			5			4		
7			2				6	5

Alton Natural History Society (ANHS)

Autumn & Winter Programme

As the evenings get darker and you start to wonder what to do of an evening, maybe take a look at what the **Alton Natural History Society** has on offer. We have some very interesting talks in our Winter Programme, here are a few to whet your appetite full details are on our website: <https://altonnaturalhistory.webnode.page/>

All our indoor evening meetings are held at **The Quaker Meeting House** in Alton (39 Church St, Alton GU34 2DA) and start at 7.30pm tea and coffee are available. Do come along and join us, it is a good opportunity to hear some great speakers and make some new friends.

18th Nov Fri **"Rare Birds of Hampshire".**
Illustrated talk by John Clark.

2nd Dec Fri **"Mountain Flowers"**
Illustrated talk by Andrew Cleave.

3rd Dec Sat **Snail Trail in Froyle**
Meet at The Hen and Chicken on A31.
SU 756422(10:30am)

16th Dec Fri **"Ashford Hangers".**
Illustrated talk by David Ball.

2023

13th Jan Fri **"Spiders".**
Illustrated talk by Simon Moore.

27th Jan Fri **"Froyle Survey Part 2".**
An Illustrated talk by Isobel Girvan
and June Chatfield.



Dear children

Are you excited that Christmas is nearly here? I am! That is why I have written a story for you. I hope you enjoy it. It is called...

Smash! Crash! Tinkle!

He looked at his state of the art, computerised watch, displaying time zones across the world. By his calculation, he had another seven hundred thousand or so deliveries to make before the following sun would rise again above the horizon. Time was becoming tight but he knew he could make it. He always did.

Manoeuvring his sleigh onto another snowy roof, he brought the reindeer to a halt, hot air escaping from their flaring nostrils into the chilly night, as

they pawed at the glistening snow. They were beginning to look tired, he thought. Little wonder! They had made millions of calls in hundreds of different countries, traversing hot deserts and super wide oceans, not to mention enduring freezing blizzards, without so much as a snort of complaint. They had also enjoyed tons of carrots left for them by hopeful children, but in truth what they really yearned for now was their warm stable, some hay and a well earned sleep.

He yawned, as he took a sack from the back of his sleigh, deftly slinging it over his shoulder. This was the home of Leila and Troy. He knew them well, having already visited them on several Christmas Eves. Their entries in his very large book described them as kind, friendly and courteous.

"I wish more children were like them," he muttered under his breath. *"When I think of some of the little blighters..."*

His big, black boots made a pleasing crunch on the crisp snow, leaving behind deep, clear prints. The weather in this part of the world was most agreeable. True it was cold but it was a cloudless, frosty night without too much rain or wind and the bright moonlight was most helpful. When he reached the chimney stack, he and the sack slid effortlessly down it.

So much practice earned its own rewards!

He landed softly on the hearth and looked around, noticing a small glass of wine next to a festive plate bearing two mince pies. Luckily his favourites! He ate them greedily and quaffed the wine in a single swallow, immediately feeling better.

"So many kind and thoughtful people in the world," he thought, stuffing two large carrots into his jacket pocket.

Turning back to the fireplace, he noticed the garland of fir, dried orange slices, cinnamon sticks and tiny red bows draped across the mantelpiece, from which hung the stockings.

"Ahhh! Must get on with it!" he thought.

He went to his sack, picking out some small items and dropping them into the brightly knitted stockings. A whistle, some chocolates, a puzzle, a pen with different coloured inks and football stickers for Troy. Football stickers, chocolates, a festive hairband, a princess ring and a writing set for Leila.

"Let's see," he murmured, stepping back to survey his handiwork. As he did so, he banged into the tree with his left boot. Disaster! With all its fragile decorations and lights, it wobbled a bit before falling back against the wall. He put his hand to his mouth to stifle a cry, but it was too late.

The damage had been done!

Smash! Crash! Tinkle!

"Oh! Botheration!" he exclaimed, or something like that.

Upstairs, the unexpected commotion had woken Leila. She sat up, rubbing her eyes, and listened. She woke Troy and together they put on their dressing gowns and slippers and tip toed down the stairs.

Meanwhile, Father Christmas had quickly taken out their larger presents and placed them beneath their stockings. He heard the noises from above. No time to try and fix the tree. No time to waste at all!

The two children gingerly opened the sitting room door, as quietly as they could, to peer inside.

What they saw amazed them! There were two black boots disappearing up the chimney and then, down into the hearth, fell a little shower of soot.

They stared at each other in complete surprise, their mouths wide open, then at their newly filled stockings, their piles of presents and the tree on its side, surrounded by shards of glass.

"Did you see what I saw?" asked Troy. *"Honestly, did you see the boots disappearing up the chimney?"* Leila nodded. *"He must be on the roof!"*

They ran through the hall to the front door and opened it wide, shivering at the blast of freezing air entering the house. Down the path they went, their gazes fixed on the roof.

All they could see was a bright flash of light disappearing into the night sky, becoming ever higher and smaller, but what they heard was much more magical! It was the sound of jingling bells and a deep voice, becoming ever more distant, calling through the frosty air.

"Merry Christmas Leila! Merry Christmas Troy! Merry Christmas Everyone! Ho! Ho!"

Ho..oo..oo



Did you like the story? I hope so. I bet you would like to see Father Christmas too but remember that you must be fast asleep when he calls on Christmas Eve and make sure your Christmas tree is in a safe place, where he cannot knock it over.

If you want to, you could draw a picture of your favourite part of the story and leave it out for him. He would like that.

Happy Christmas Everyone!

Linda Wells

Thoughts from the Shepherds Fields

By Barbara Ball

As I gaze across this gravelly, hilly ground
I picture your shining radiance all around
THIS PLACE where brilliant angel choirs joyfully told
That the Messiah was here - NOW - fulfilling prophecies of old.

How the shepherds must have trembled then on their night watch
When they were just settling down for a nap with their flocks.
Then out of the darkness the armies of heaven shined their light,
Singing and music resounding in the ebony night.
No longer could they count the twinkling stars in the sky;
Or need the fire light to see if their sheep were nearby.
This vast host would have lit up all the hills I can see -
From quiet caves just before me to the distant olive tree.
The shepherds struck dumb by the heavenly scene
Must have pinched themselves - could it be a strange dream?
But the majesty, the harmonies and the glory so near
Along with the good news and the advice not to fear,
Must have assured them that this was a message from God.
Not confined to their Torah scrolls but a personal Lord
Whose humble arrival in a cave near to here
Would change the world through mercy and love so sincere.

Now my mind drifts to the scene at Bethlehem;
Mary's heart aching for Jesus - the Saviour of men.
She holds him tight in her arms -her treasure, her adored
Her first-born dear son, but her redeemer, my Lord.

He says 'Will you love and have faith in me, trust I want your best?
Can I comfort and guide you, carry you through the test?
I am waiting, I am longing, I love you my friend'
This baby came as my saviour - my beginning - my end.

Meet the Councillor

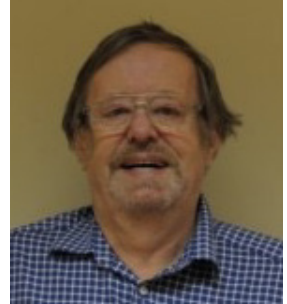


Bentley
PARISH COUNCIL

Cllr Stephen Whowell

My name is Stephen Whowell and I have lived in Bentley since 1999. I was working in the Merchant Navy as an engineer until that time and I came to this area when I became a Technical Superintendent for an ocean-going barge firm called Anchor Marine in Farnham.

I spent most of the time at first abroad loading and fixing these unmanned barges: attaching them to tugs and unloading them at the end of the voyage. I retired from them in 2015 and I joined the Parish Council in January 2017. After getting some experience I was made the Recreation Ground Officer and last year I joined the Finance Committee.



I have enjoyed living in Bentley and working for the council immensely and have settled in I hope quite well.

Follow us on Facebook and Instagram:

@bentleyparishcouncil
@bentley_parish_council

www.bentleyparishcouncil.gov.uk

Sudoku Games Answers

4	6	2	5	9	1	3	8	7
1	3	9	6	8	7	4	2	5
7	5	8	3	4	2	1	9	6
6	9	1	7	3	8	2	5	4
5	2	3	9	6	4	7	1	8
8	7	4	2	1	5	9	6	3
9	8	7	4	2	6	5	3	1
3	1	5	8	7	9	6	4	2
2	4	6	1	5	3	8	7	9

9	4	7	8	6	1	2	5	3
2	1	8	4	5	3	6	7	9
5	6	3	7	9	2	8	1	4
1	9	4	2	7	6	3	8	5
7	8	2	3	4	5	9	6	1
6	3	5	9	1	8	4	2	7
3	5	6	1	2	4	7	9	8
4	7	1	6	8	9	5	3	2
8	2	9	5	3	7	1	4	6

6	8	2	7	5	1	9	4	3
1	3	7	6	9	4	8	5	2
4	5	9	8	2	3	6	1	7
8	7	5	1	6	9	2	3	4
9	4	6	3	7	2	5	8	1
2	1	3	4	8	5	7	9	6
5	2	4	9	3	6	1	7	8
3	6	8	5	1	7	4	2	9
7	9	1	2	4	8	3	6	5

Sudoku game EASY

Sudoku game MEDIUM

Sudoku game HARD

HOME COMPUTER SUPPORT & TUITION

" My PC Home Help ! "

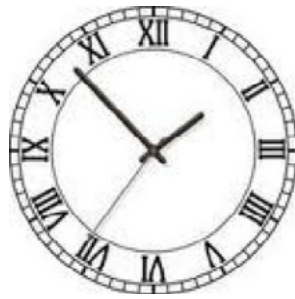
Friendly, Professional Support for Windows PC, Apple Computers, iPads etc.



Computer Repairs, Virus Removal & Upgrades
Broadband Wired/Wireless Solutions & Setup
One To One Home Tuition for all Abilities
Smart TVs and other Home Technology
I Supply, Install & Support PCs, iMacs & iPads

Call **RICHARD SIERS** on Bentley (01420) 22844
enquiries@myPChomehelp.co.uk

visit: www.myPChomehelp.co.uk



M. W. SHAW – FARRINGTON

*Antique Clock Repairs
& Restoration
House calls undertaken
All work guaranteed
Tel. Mr. M. W. Shaw
01420 588457*

CHARLES READ

& DAUGHTER

INDEPENDENT FUNERAL DIRECTORS & MEMORIAL MASONS



24 HOUR PROFESSIONAL
& PERSONAL SERVICE
PRIVATE CHAPELS OF REST
PRE PAID & PRE ARRANGED FUNERALS

01420 83551

www.charlesreaddaughter.uk

11-13 Turk Street, Alton, Hampshire GU34 1AG



NAFD Member

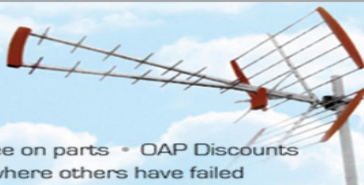


PR AERIALS

DIGITAL TV & SATELLITE SPECIALIST

Proud members of
Checkatrade.com
Where reputation matters

Paul Rolfe



Free Quotes • Service & Repairs • Full Year Guarantee on parts • OAP Discounts
TV installations considered • Freeview achieved where others have failed

T. 01420 80650

M. 07918 913194

www.praerials.com

SAM BALL TUITION

MATHS AND MUSIC TUITION

Teaching is a passion of mine and it's so exciting to see my students achieve that light bulb moment and get excited about their subject!

I have been teaching Music and Maths for the past 9 years. I have achieved A level grade A in both these subjects and have a degree in Theology and Music. I also have a clear enhanced DBS check.

So, if you have always wanted to learn a musical instrument, develop your music skills, or progress in your maths, please send me an email or contact me through my Facebook page.

**TEACHING MATHS, DRUMS,
GUITAR & PIANO**

FACEBOOK: <https://www.facebook.com/samballtuition/>

samballtuition@gmail.com



GCSE Tuition

Contact Juana

juana.garcia@live.co.uk



ADVERTISE YOUR BUSINESS HERE

CONTACT US

magazine@benbinfro.org



Sue Hood

Pet Portraits

A unique and forever memory of your beloved pet, working in pastels I capture the very essence of your pet, their character, their unique qualities.

For more information, prices etc

Tel 07920 038683

Email susaninverarity1@gmail.com



THE WICKHAM INSTITUTE (Binsted Village Hall)



LOTTERY FUNDED

Having a party? Need a venue for a one-off meeting or conference?
Looking for somewhere to hold a regular club/society meeting or class?

Why not consider hiring our lovely Grade II listed hall. It is light and airy, with a stage and a modern kitchen. The hall can seat up to 80 at tables or set up for conferences and meetings, and can accommodate up to 120 standing (Covid restrictions may apply).

We have very reasonable hire rates, why not contact us.



**For bookings or further information,
please contact the booking secretary on
01420 22388 or visit our website
www.wickhaminstitute.co.uk**



ECS

Tel: 01420 561 777

email: info@easycleanservices.co.uk

Tanker Services

Cesspits - Cesspools -Septic Tanks
Treatment Plants - Pump Stations
Gully and Interceptors
Grease Traps

Drainage

Drains and Pipes Unblocked
High Pressure Jetting
CCTV Surveys
Drain Re-lining - No Dig Repairs

Servicing

Servicing of Sewage Treatment Plants & Pump Wells
British Water accredited engineers
Supplier of Pumps and consumables
Regular maintenance contracts or one-off services



COUNTY Oil Tank SOLUTIONS

— The Oil and Water Tank Specialist —

Free Tank Surveys

Domestic & Commercial Tank Replacements

Tank Servicing & Tank Disposals

AGA & Rayburn Servicing

GAUGES supplied and fitted • Hire Tanks

Commercial Jobs Undertaken

24 Hr Emergency Call Out for Failed or Leaking Oil Tanks and Pipework

Call us on **07799 643455** for ALL your tank needs

james@countyoiltanksolutions.com • www.countyoiltanksolutions.com

Bentley Memorial Hall

The perfect venue for celebrations, weddings, children's parties, meetings, specialist classes or exhibitions.

Conveniently located in the centre of the village with kitchen facilities and ample car parking.

Main hall accommodating up to 100 people and two meeting rooms accommodating up to 60 people each. Main hall and one meeting room can be combined for larger events.

For more information and to book the hall, please go to the website www.bentleymemorialhall.org



ACORNS B&B



Acorns is a self-contained guest cottage, located in the picturesque village of Lower Froyle.

It has its own entrance, parking, and a south facing terrace which offers beautiful views across open fields.

It has a generous double bedroom, comfortable sitting room with a smart TV, and a luxury shower room, together with a small but well-equipped kitchen.

A complimentary continental breakfast basket will be provided for your stay, along with a selection of Twinings teas and Lavazza coffee pods.

Contact Alice for further information on 07768 165233 or ghinns@gmail.com



**DOWNIE &
GADBAN**

**Residential Conveyancing - Wills -
Powers of Attorney - Probate -
Commercial Property - Property
Development - Dispute Resolution**

Instant conveyancing quotes available via our website
www.downieandgadban.co.uk

We are here to help you.
Call **01420 82879** or email us at
info@downieandgadban.co.uk

Why Choose Us?

We pride ourselves on being friendly, approachable and professional. We have been in our current building at the end of the High Street in Alton (close to M&S, The Ivy House and The White Horse) since 1962 and have been serving generations of families in the Alton area since 1905.



www.downieandgadban.co.uk

Rockbourne House, 100 High Street, Alton, Hampshire, GU34 1ER

A moment to reflect and share memories.

“Somewhere between heaven and earth”

Bury Court, Hole Lane, Bentley, GU10 5LZ



Tel: 020 3475 0550

team@bury-court.com

**ADVERTISE YOUR
BUSINESS HERE**

CONTACT US
magazine@benbinfro.org

**ADVERTISE YOUR
BUSINESS HERE**

CONTACT US
magazine@benbinfro.org



Dance Fitness Farnham

All classes
£7
First Class
Free!

Zumba® Fitness

Saturdays 9am Rowledge Village HALL
Thursdays 8pm Farnham Memorial Hall

Everything is
better
when you
dance!

Zumba® Gold LOW IMPACT

Tuesdays 9.30am Rowledge Village CLUB
Wednesdays 9.30am Elstead Village Hall
Thursdays 9.30am Farnham Baptist Church
Fridays 9.30am Milford Village Hall



Fitsteps

Mondays 9.30am Elstead Village Hall
Wednesdays 6.30pm The Spire Church,
Farnham

Low impact - ideal for
beginners, those returning
to exercise, older active
adults

Love Strictly? Then you'll love
Fitsteps! Latin and ballroom
dance workout - no partner
required.

Contact Alison Edwards
0781 397 6841
alizumba835@gmail.com
and on Facebook



Keep Fit With Kit

MOBILE PT | ONLINE COACH | GROUP SESSIONS



I'M KITTY, A MOBILE PERSONAL TRAINER FROM BINSTED. WORK WITH ME TO:

- IMPROVE YOUR CONFIDENCE
- OVERCOME GYM ANXIETY
- IMPROVE YOUR STRENGTH AND MOBILITY
- JOIN A COMMUNITY
- BUILD SUSTAINABLE HABITS THAT LAST

BOOK A FREE CONSULTATION

07471687927 | KEEPFITWITHKIT@OUTLOOK.COM |
WWW.KEEPFITWITHKIT.COM

Yoga Classes

All levels welcome
FREE first class

Thursday, 6.15pm
Binsted Village Hall

Thursday, 8pm
Online

Sunday, 9am
Bentley Memorial Hall



WWW.SANGATYOGA.CO.UK
HELLO@SANGATYOGA.CO.UK

Yoga classes



Mondays

12.30 pm Wickham Institute, Binsted
6.30 pm Bentley Memorial Hall

Wednesdays

6.30 pm Bentley Memorial Hall

Book now

www.juanagarciayoga.co.uk

Physiotherapy

In the centre of Bentley

by

Pippa Blizzard

Chartered Physiotherapist
MCSP HCPC BAHT AACP

07714 239644

physiotherapy@pippa-blizzard.co.uk

www.pippa-blizzard.co.uk



Cressida Mizen
REFLEXOLOGY

PROFESSIONAL & PROFOUND
THERAPY IN A TRANQUIL SETTING

**REBALANCE
RELAX · RESTORE**

TO BOOK, CONTACT
CRESS@CRESSIDAMIZEN.COM
07939 505727

WWW.CRESSIDAMIZEN.COM
Aylesfield Farm House,
Froyle Road, Shalden, GU34 4BY



Are you finding life difficult?

Counselling gives you an opportunity to explore any problems and issues with a Counsellor who will listen and help you explore and understand your feelings, thoughts, and behaviour.

We provide low-cost face-to-face, zoom video and telephone counselling.

Call or email us for a confidential no obligation enquiry

01420 89207

admin@altoncounselling.org.uk



British Psychoanalytic Council (BPC) member
British Association for Counselling & Psychotherapy
(BACP) accredited service
Registered Charity 279857



Oak Park Clinic

**OSTEOPATHY
MASSAGE
REFLEXOLOGY
HYPNOTHERAPY
BABY MASSAGE CLASSES
1:1 PILATES**

Telephone 01252 850 800
Book online www.oakparkclinic.co.uk

The Old Parsonage, Church
Street, Crondall, GU10 5QQ



BEN MACDONALD ASSOCIATES

Chartered Architects & Surveyors

- Extensions
- Refurbishment
- One off Houses
- Farm Building Conversions
- Listed Building Alterations

Total design and management
Service

**Hoggatts House, Kingsley
Bordon GU35 9NY
Tel. 01420 488556
email:**

benmacdonald_architect@hotmail.com

THORNE & CO

TAXATION CONSULTANTS

**Friendly, efficient service to deal
With your Accounts and
Self-Assessment Returns**

**Initial Interview Free
Evening appointments available**

01420 22998

Email: thornebentley@aol.com



AWARD WINNING LOCAL TOILET HIRE

Luxury Trailer Toilets
Luxury Showers
Single Portable Toilets
Accessible WC's & Urinals
Long Term Building Site Loos

**01420 588 355
hello@loos.co.uk
www.loos.co.uk**



Reliable, friendly garden services in
Bentley and surrounding areas.



- Mowing
- Hedges
- Weeding
- Planting
- General garden care
and maintenance

Please get in touch to discuss your
gardening requirements and I will be
happy to help.

David Green: 07594 123416
agreengardenerGU10@gmail.com

IAN HARDY TREE SURGEON

- All aspects of Tree Surgery
- Woodland Maintenance
- Hedge Cutting
- Land Clearance

t: 01252 706978

m: 07778 918007

e: ian.hardy@tree-art.co.uk

www.tree-art.co.uk

ADVERTISE YOUR BUSINESS HERE



CONTACT US

magazine@benbinfro.org

MARTIN CASHMORE FENCING LTD

SUPPLIER & CONTRACTOR

Our family run business was established in 1982. We are located just outside Farnham on the A325. We stock a large quantity of Fencing Materials, Oak and Softwood Sleepers, Gates, Wire Fencing, Tools, Fittings and much more.

We offer a prompt delivery service to a wide area.

We supply and install all types of Fencing and Gates, please contact us for a free quote.

01420 521040

sales@cashmorefencing.co.uk

www.martincashmore.co.uk



Unit 2, Halfway Farm, Dockenfield Road,
Bucks Horn Oak, Farnham, GU10 4LP





BEAUTIFUL MARQUEES
FOR EVERY OCCASION

For more information call us or visit our website

Tel. 01420 488477

www.FourSeasonsMarquees.co.uk

Jane Stockdale

HOME COOKING

FOR SMALL OCCASIONS

Dinners, Luncheons, Buffets,
Drinks Parties, Tea Parties,
Children's Parties,

After Service Gatherings.
Cooking for the freezer
and individual dishes.

SPECIALISING IN
CAKES AND CANAPES

**Please call 01252 723161
or 07775696918**

janestockdale01@hotmail.co.uk



Food Affair Catering

Caterers for any occasion

Delicious food beautifully
presented

Call Amanda on
Tel: 0778 732 6982

Email: foodaffair@hotmail.co.uk

www.food-affair.co.uk

ADVERTISE YOUR BUSINESS HERE

CONTACT US

magazine@benbinfro.org

Enjoy Brighter, Fresher, Dry Carpets & Upholstery



Dry Carpet, Upholstery & Hard Floor Cleaners

Dry carpet cleaning

Upholstery cleaning

Leather furniture cleaning

Hard floor cleaning

Wooden floor restoration

Get your
main room or
3-piece suite
cleaned

50% OFF

on all further
carpeted
rooms

Get your free quote

0800 180 4046

Our hard floor cleaning includes: tile, stone,
wood, all LVT including Amtico & Karndean

zerodrytimefarnham.co.uk

24/7
CALL OUT

ALTON PUMP SERVICES

BLOCKED DRAIN? PUMP PROBLEMS? TANK NEED EMPTYING?

We'll keep you flowing

- ✓ Blocked Drains
- ✓ Pump Supply & Service
- ✓ Drain Jetting
- ✓ CCTV Drain Survey
- ✓ Septic Tank Empty*
- ✓ Treatment Plant Installation

www.altonpumps.com

ACT NOW

24 HOUR CALL OUT

CALL: 01420 561661



GAVFRESH CARPETS

Local Bentley insured carpet cleaner
Dry extraction Carpet Cleaning - Dry within two hours
Houses from £70 and Flats from £50

07855 279308
gavfreshcarpets.com

Simon Sharpe **SE Electrical**

All electrical work carried out
Including
re-wiring, extra sockets, fault finding,
lighting, *commercial, PAT Testing,*
Fixed Wire Testing
Electric Car Charge Sockets

34 years' experience
Contact Simon - 24 hour call out

07720851398
or
01420 477542

C.S. EMBLING **THE CABINET REPAIR** **SHOP**

Woodlands Farm, Blacknest,
Alton, Hants GU34 4QB
Office Tel: 01252 794260
(Frensham, Surrey)

Antique Furniture Restoration
Modern Furniture Repairs
French Polishing & Other
Finishes
Insurance Claim Repairs

ROBERT MOODIE
at Clare Laughland Interiors
Master Upholsterer
since 1973



Is your sofa or perhaps your favourite chair
In need of a little loving care?
Don't push it aside or take to the 'tip'
Just give us a ring and we'll mend it.

Loose covers or fitted, or down to the frame
We will restore it, elaborate or plain
Fabrics and braids for us to enhance
Our craftsmanship's shown if given the chance.

Specialists in reupholstery of antique and
contemporary furniture
The Old Milking Parlour, Mellow Farm, Dockenfield,
Surrey, GU10 4HH - 01428 712886
robertmoodie@clarelaughland.co.uk

**ADVERTISE YOUR
BUSINESS HERE**

CONTACT US

magazine@benbinfro.org

Alpha decor

Guild of Master Craftsmen
Member

01252 724675

davidhorne52@btinternet.com

Complete decorating service
Interior and exterior painting

Wallpaper hanging

In business locally over 30 years

David Horne

BENTLEY JOINERY
Quality Purpose Made
Joinery

Sliding Sash Windows, Doors, Staircases,
Custom Made Furniture,
Oak Barns Made to Your Own Design

Unit 2A, Blacknest Industrial Park
Blacknest Road, Alton
Hants GU34 4PX

Tel/Fax: 01420 22252
Email: info@bentleyjoinery.co.uk

ROOKERY BARNs LTD

Your local supplier of oak framed barn-style buildings



The Complete Service

- ◆ Design
- ◆ Planning
- ◆ Groundworks
- ◆ Construction

Contact us now for a free
consultation

tel. 01420 488870

www.rookerybarns.com



WAYNE COLLINGBORN

07875 207208

w.collingborn@btinternet.com

**INTERIOR AND EXTERIOR DECORATOR & HANDYMAN SERVICES
PRIVATE & COMMERCIAL**

SERVICES AVAILABLE:

**Painting, Tiling, Carpentry, Wallpaper Hanging, Decking, Fencing,
Fascia & Gutter Cleaning, General Repairs, General Maintenance.**

CONTACT ME FOR A FREE ESTIMATE

(References are available upon request)

MJP Plumbing & Heating Ltd

Helpful friendly plumber.

Will do all the jobs that need doing from a tap washer to refitting your bathroom.

Servicing to replacing boilers. **Just ask, no job too small!**

Works with all systems – heating and plumbing.

Gas Safe registered

Contact **Mike** on **07768 844276** or email mike@mjplumbing.com

Simons Decorating Services

All aspects of Interior & exterior painting/decorating

Low cost joinery repairs with RepairCare system

Over 30 years' experience & fully insured

07747002595

simonsdecor@live.co.uk



Andrew Wood

Heating and Plumbing Engineer



- BOILER CHANGES
- BOILER SERVICING
- POWER FLUSHING



- CENTRAL HEATING SYSTEMS
- GAS INSTALLATIONS
- GENERAL PLUMBING

Gas Safe No. 15316

For free estimates or advice telephone: **Bentley (01420) 22637**

MICHAEL NEWSTEAD

Bathroom Installations • Small Plumbing Jobs • Plastering
Tiling • Exterior and Interior Decorating

30 Years' Experience

Free quotations **07960 893369**

michaelnewstead70@outlook.com

2 Southview cottages Bentley

R. A. CROFT LTD

Building & Joinery

**All Aspects of Building Work Undertaken
Listed, Refurbishments, Extensions
Buildings & General Maintenance
New Houses
Registered House Builder
Landscaping & Mini Excavator Hire**

**Unit 2A, Blacknest Industrial Park
Blacknest Road, Alton
Hants GU34 4PX**

**Tel/Fax: 01420 521152
Email: info@racroftltd.co.uk**



REG 234774

AB PLUMBING & HEATING SERVICES

**“PROVIDING PLUMBING
& HEATING SOLUTIONS TO
THE LOCAL COMMUNITY”**

**7 DAYS A WEEK FOR ALL YOUR
PLUMBING AND HEATING NEEDS
4 HOLMWOOD COTTAGES, BENTLEY GU10 5NF**

OFFICE :01420 525354,

MOBILE :077650 74638

**EMAIL: INFOABPLUMBING@AOL.COM/
INFOABPLUMBING@GMAIL.COM**



HAMMERTONDESIGN

www.hammertondesign.co.uk

LOGO | PRINT | DIGITAL

GRAPHIC DESIGN SERVICES

BENTLEY

Website: www.bentleyparishcouncil.gov.uk

The Memorial Hall

(Bentley Memorial Hall Association):

Chairman: Steve Fice Tel. 01420 22197

Email: steve.fice@btinternet.com

www.bentleymemorialhall.org

Badminton Club: Martin Fox 07710 035913

martin.fox62@yahoo.co.uk

Garden Club Chairman

Andrew Croom-Johnson Tel: 01420 23157

Treasurer Patricia Cardy Tel: 01420 22325

District Council

Ken Carter, Brookfield, Station Road, Bentley GU10 5LA. 01420 22576 Email

kenc@comark-associates.co.uk

Parish Council

Chairman: Mr John Fuller 07768 558751

johnfuller@bentleyparishcouncil.gov.uk

Clerk: Emma Wadey 07795 326539

Email: clerk@bentleyparishcouncil.gov.uk

Facebook: [@bentleyparishcouncil](https://www.facebook.com/bentleyparishcouncil)

Instagram: [@bentley_parish_council](https://www.instagram.com/bentley_parish_council)

Bentley Memorial Hall, Hole Lane, Farnham GU10 5LP

Parish Office Hours

Monday to Thursday 9am to 3pm

Bentley School

Headteacher: Katy Pinchess 01420 525010

Email: bentleyschoolptfa@gmail.com

Childcare

Dottie Tots: Karen 07387 576 307

Fête Committee

Chairman: Hugh Chissell, Greystones, Bentley 01420 23117

Flower Show

Chairman: Vanessa Remington 01420 525322

Phoenix Group: Cathy Smith 01420 520169

Bentley Rec Ground

Chair: Stephen Howell

stephenhowell@bentleyparishcouncil.co.uk

Joint Parish Organisations

Care Group (car service)

Bookings: 07775 458873

Secretary: 01420 590697

Girl Guides (at Holybourne)

Lucy Yendell 01420 80560

2nd Bentley Scout Group General Enquiries:

admin@2ndbentleyscouts.org.uk 07974377736

www.2ndbentleyscouts.org.uk

BINSTED

Website: binstedparishcouncil.com

The Wickham Institute

Chairman: Catherine Hadfield 01420 23146

Bookings: Ann Mann 01420 22388

email: annmann074@btinternet.com

www.wickhaminstitute.co.uk

Treasurer: Andrew Croom Johnson - 23157

County Councillor Mark Kemp Gee - 01420

563550, email - marknkempgee@aol.com

District Council

Ken Carter, Brookfield, Station Road,

Bentley GU10 5LA. 01420 22576

Email ken.carter@easthants.gov.uk,

David Ashcroft, 07966 511 868.

Email DavidAshcroft@easthants.gov.uk,

Parish Council

Chair: Alison Melvin a.melvin@binstedparishcouncil.org.uk

binstedparishcouncil.org.uk, 07851 677 057

Vice Chair: Ryan France-Moore r.francemoore@binstedparishcouncil.org.uk

binstedparishcouncil.org.uk

Clerk Lisa Spindler

Tel: 01420 520692 Mobile: 07483 310631

Email: clerk@binstedparishcouncil.org.uk

Website: Binstedparishcouncil.org.uk

Facebook: [@Binstedparishcouncil](https://www.facebook.com/Binstedparishcouncil)

Binsted School

Headteacher: Sharron Morton 01420 23200

Fête and Flower Show

Matt Arrowsmith

thebinstedfete@gmail.com

Tennis and Croquet Club Chairman:

Chair: Nial Dunne 01420 22922 nial.dunne@sky.com

Secretary - Kate Ironside

ladyironside@btinternet.com

Website: <http://e-voice.org.uk/btcc/>

Growmore Club Secretary:

Reita Fisher 01483 570996

Bentley and Binsted Police

Police Rural Beat Officer: Jess Hornsby

Alton Police 101

Binsted Cricket Club

Chairman: John Dineen 01420 617814

or mob: 07747878392

Binsted Football Club

Secretary: Tim Winkworth binstedfootball@gmail.com

Friends of Binsted School (FOBS)

[@FOBSBinsted](https://www.facebook.com/FOBSBinsted) 01420 23200 or

fobs.binsted@gmail.com

Chairman: Alice Cowie

December/January Services

Here you'll find our Sunday services through December and January. For our extra Christmas services, please see inside the magazine or our Christmas card.

4th December 8am Froyle Holy Communion
9:30am Bentley Morning Worship
with Children's Church
11am Oakhanger Holy Communion

11th December 9:30am Froyle Holy Communion
11am Binsted Morning Worship
5pm Bentley Live@5 Big Praise Carols

18th December 9:30am Bentley Holy Communion
6pm Bentley Carols in the Car Park (Memorial Hall)
6:30pm Froyle Carol Service

24th December 4pm Bentley Christingle Service
Christmas Eve 10pm Binsted Midnight Communion
11pm Bentley Midnight Communion
11:30pm Froyle Midnight Communion

25th December 9:30am Bentley Family Christmas Day Communion
Christmas Day 9:30am Binsted Christmas Day Communion
11am Froyle Christmas Day Communion
11am Oakhanger Christmas Day Communion

1st January 2023 11am Binsted New Year's Day Service
New Year's Day

8th January 9:30am Froyle Holy Communion
11am Binsted Morning Worship
5pm Bentley Live@5 Big Praise

15th January 9:30am Bentley Holy Communion
11am Froyle Morning Worship
4pm Messy Church

22nd January 9:30am Binsted Holy Communion
11am Kingsley Holy Communion
5pm Bentley Live@5 YumYum
6:30pm Froyle Evensong

29th January 11am Binsted Benefice Service

www.benbinfro.co.uk

