

JULY & AUGUST 2022

BENTLEY & BINSTED

PARISH MAGAZINE



Rector of Bentley, Binsted and Froyle: In Vacancy

Holy Cross Vicarage, Binsted, Alton, GU34 4NX

Website: www.benbinfro.co.uk

Assistant Priest – Christopher Ogilvie Thompson Tel: 07776 178690
email: christopherot@me.com

Benefice Administrators – Lucinda Edwards (admin@benbinfro.org) and
Gemma Ball (admin@benbinfro.org)
01420 23339

Honorary Assistant Minister – David Perryman, Treetops, Upper Froyle
Tel. 520647 david.perrypeople@gmail.com

Parishes Prayer Chain – Nick Carter
01420 489122 or nick.carter1945@outlook.com

Pastoral Care Team – Nick Carter
01420 489122 or nick.carter1945@outlook.com

Anna Chaplain – Rev. Nicky Smallwood,
annachaplain@benbinfro.co.uk, 07765 058593

Readers – Harold Fish, 6 Bonners Field, Bentley. 22947

Bentley: St Mary's Churchwardens:

Jill Kiely, 11 Broadlands Close, Bentley, GU10 5LE - 22735

Nick Caddick, Tanners, GU10 5NE - 23229

Binsted: Holy Cross Churchwardens

Cathie Weldon, Malms House, GU34 4NU – 01420 525276

Stella Croom-Johnson, 4 Foresters Cottages GU34 4PS – 07740 861256

Youth Leader - Gemma Ball - gemma@benbinfro.co.uk

Worship Leader - Sam Ball - sam@benbinfro.co.uk

Parish Magazine

Articles and Advertising: Any copy or advertising enquiries should be sent to Gemma Ball on the **5th** of the month, by email (magazine@benbinfro.org)

Editor: Benefice Team

Designer: Mike Hammerton

Treasurer: Steve Fice, 01420 22197 steve.fice@btinternet.com

Distribution: Bentley – Harold Fish Tel 22947

Binsted – Alan and Anne Shelley Tel 520960

Benefice Letter

Dear All

Did you madly wave a flag, dine on Coronation Chicken and wear a silly hat during the Platinum Jubilee celebrations? Or maybe you just quietly enjoyed watching the coverage on television, of not just the spectacular parades, but the massed crowds of cheering spectators.

There are some who think that street parties, chains of fiery beacons across the nation and lines of fluttering bunting are frivolous frippery and a waste of time and expense, but are they? Reflecting on what we have seen recently, it seems that investing in a few hours and in some cases, days, of joy and celebration creates much more than fleeting pleasure. Looking around our benefice there were parties large and small, cakes of all sizes and much singing and cheering. Around the country there was every kind of activity to mark the occasion, from eccentric knitted tableaux topping postboxes to enormous record breaking street parties and everywhere there were smiles, laughter and cheers. People came together to plan, bake, make and cheer in one nation-wide gigantic party, which helped all of us put the fears of the last couple of years behind us. It was a celebration not just of the Queen's reign, but our ability to endure and survive too.

So, was it all worthwhile? Cynics may scoff, but when communities united to celebrate, they created lasting memories for all generations as they decorated gardens and streets. Everyone brought their best selves to the parties, whether they were helping to hang bunting, arrange red, white and blue flowers, or try to recreate the winning Platinum Jubilee Pudding. The crowds in streets all over our island, whether be it The Mall or in villages, were good natured, laughing, singing and cheering even when the weather turned into a typical British summer.

And underlying all the jollity was a serious message recognising that devotion to duty is honourable, that constancy and faith are to be applauded and admired. In a world where there are currently so many challenges facing us, it was heartening to be reminded that we can be strong. When the bunting comes down, we are left with pride in our communities and faith that we will endure no matter what may happen. May we build upon this firm foundation and face the next 70 years with confidence.

The Benefice Team

Youth Update

Heading into the summer months, there is a lot on offer for our young people in BenBinFro. Working with our friends and youth work colleagues in Odiham, Alton and Four Marks, we have put together a few dates to really invest in our children and young people across East Hampshire, on top of what we're doing locally in BenBinFro! Take a look at the timetable below and get in touch if your young person is interested in any of our groups:

When?	What?	Who?	Where?	Team?
1st July 6-9pm	United Youth - Picnic and games	Year 6+	Butser Hill	United
15th July 5-6:30pm	four:twelve – Summer BBQ	Years 4-7	Bentley School Sports Hall	BenBinFro
29th – 30th July 4pm – 10am the next day	United Junior Sleepover	Years 4-6	Church of the Good Shepherd, Four Marks	United
2nd October	United Youth Event	Year 7+	TBC	United

September dates for four:twelve will be in the next magazine!

Also, a huge thank you to those who supported our young people for the Big Sleep Out this year! It was a huge success and we have raised over £700 for Trinity Winchester which goes towards helping those experiencing homelessness. Take a look at a few photos...

Gemma Ball

Pastoral Assistant (Youth) & Administrator
gemma@benbinfro.co.uk





Church Register

Bentley

Friday 29th April Wedding of Connie and Philip

Sunday 1st May Baptism of Ada Green

Friday 6th May Wedding of Sarah and Callum

Saturday 7th May Wedding of Jennifer and Patrick

Tuesday 31st May Funeral and burial of David Bown

Binsted

Tuesday 3rd May Interment of Ashes of Ailsa Burrows



Binsted's Harvest Festival

Service to celebrate Harvest Time and our Farming Community, will be held at Holy Cross Church, Binsted on Sunday 25th September 2022 at 09:30 a.m.



THE WICKHAM INSTITUTE

(Binsted Village Hall)



BINSTED COFFEE SHOP

WEDNESDAYS 10am – 12noon (during term-time)

PLEASE COME ALONG AND JOIN US

COFFEE, TEA, HOME MADE CAKES ONLY £2

CHILDRENS' TOYS AVAILABLE

ALL WELCOME

WI-FI NOW AVAILABLE



ALL COVID REGULATIONS IN PLACE AT THE TIME WILL BE OBSERVED

four:twelve



SUMMER BBQ

YEARS 4,5,6&7

PARENTS, CARERS & SIBLINGS WELCOME!
FRIDAY 15TH JULY
5-6:30PM

Join the young people and four:twelve team for a summer celebration! With a BBQ, games, and a chance to find out about next years plans.

**Email Gemma to register your interest for catering purposes!
gemma@benbinfro.co.uk**

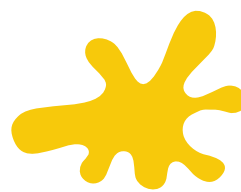
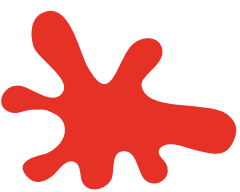




Sunday 17th July
4-6pm
Binsted Village Hall
(Wickham Institute)

We're really excited to be back in person! Join us for all age arts and crafts, activities, stories and songs.

Supper will be provided.





BenBinFro Prayer Week

It was a joy to run the Thy Kingdom Come annual prayer week again this year, and in person! We had over 10 prayer stations lovingly created by members of our church family across the benefice. The theme was *Sanctuary*, so there were a lot of tents to feel safe, a cardboard shelter to think about homelessness and lots of thought-provoking stations around the sanctuary of the church. There was also an especially comfy chair that everyone sat in at one point in the week!

Thanks to everyone who created a prayer station, to those who spent time in the prayer room, and to those who hosted the children from Bentley school. It was a fabulous week, full of prayer and worship!

Blessings,

The BenBinFro Team

A Mid Summer Night's Music

With music by (among others):

Morley ♡ Gibbons ♡ Stanford ♡ Rutter ♡ Elgar



Saturday, 23 July, 2022 at 6.30pm
Holy Cross Church, Binsted GU34 4NX

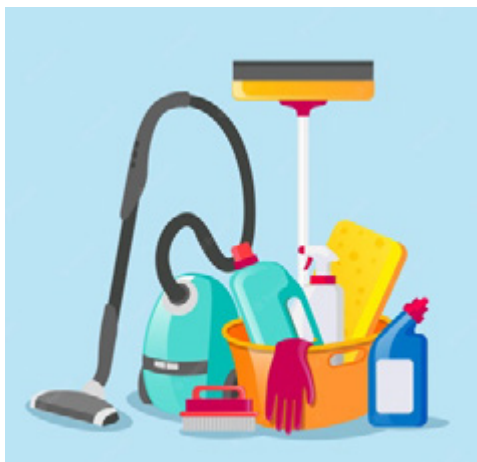
In Aid of the East Window Restoration Appeal
Tickets by Donation (including a glass of wine & nibbles)

From Stella Croom-Johnson 07740 861256

or Cathie Weldon 07828 083535

Cantique
CHAMBER CHOIR

Conductor: Richard Walshaw



Holy Cross Binsted Church

We need your Help!

Please help us to keep dust and cobwebs from taking over...

Over the years many people have helped us keep our beautiful 12th Century church clean and tidy - for services, weddings and many other events and visitors. We have been most grateful for all they have done, but sadly, the team of helpers has diminished over the past years.

We are hoping that our community will help us in keeping the church clean and welcoming, to all who enter its doors.

If you find that you have a spare an hour every so often to clean the church, we would be very pleased to hear from you. We encourage our helpers to clean in pairs, so maybe you and a friend could come together to help us in this way? The more people who volunteer – the less often each person needs to do it!

Please give us a call if you are interested in helping in this way:

Cathie Weldon – 07828 083535
(churchwardenbinsted@benbinfro.co.uk)
 or
Stella Croom-Johnson - 07740 861256
(binstedwarden@benbinfro.co.uk)

BENBINFRO SUMMER SERVICES

The summer months bring a slight change to our usual service pattern at BenBinFro.

There are 3 special summer services in July:

- 3rd July 11am Binsted Pet Service on Binsted Rec
- 10th July 11am Froyle Pet Service at Frolye Village Hall
- 17th July 11am Bentley Marquee Service on Bentley Rec

In August we have a reduced service pattern, with one Holy Communion service each Sunday. These are all at 10:30am.

- 7th August - Kingsley
- 14th August - Froyle
- 21st August - Bentley
- 28th August - Binsted

For the full summer service schedule, see the back cover of the magazine.



You are warmly invited to

CHURCH ON THE REC

On Sunday 17th July at 11am

In the marquee at Bentley Recreation ground

With live hymns, songs, prayers and fun!

Everyone is welcome, we would really love to see you!



www.benbinfro.co.uk
admin@benbinfro.org





Binsted's Church Pet Service

On the Recreational Ground following
the Village Fete

On Sunday 3rd July at 11 a.m.

Please bring your pets to this all-age
service with hymns, songs
and a blessing for your pets.

Refreshments will be served
following the service.



BENTLEY & BINSTED

PARISH MAGAZINE

We decided in 2017 to stop the magazine being a subscriber-based publication and instead distribute the magazine to all houses in our two villages. We planned to cover the loss of income by increasing our advertising revenues, largely through the extended reach of the magazine.

Sadly, the pandemic has reduced the advertising revenues and the magazine has run at a loss for the last couple of years, using up the financial reserves. The shortfall is currently covered by the two churches, but we want to keep the magazine as something for everyone and we would appreciate any support we can get to reduce the burden on the church finances.

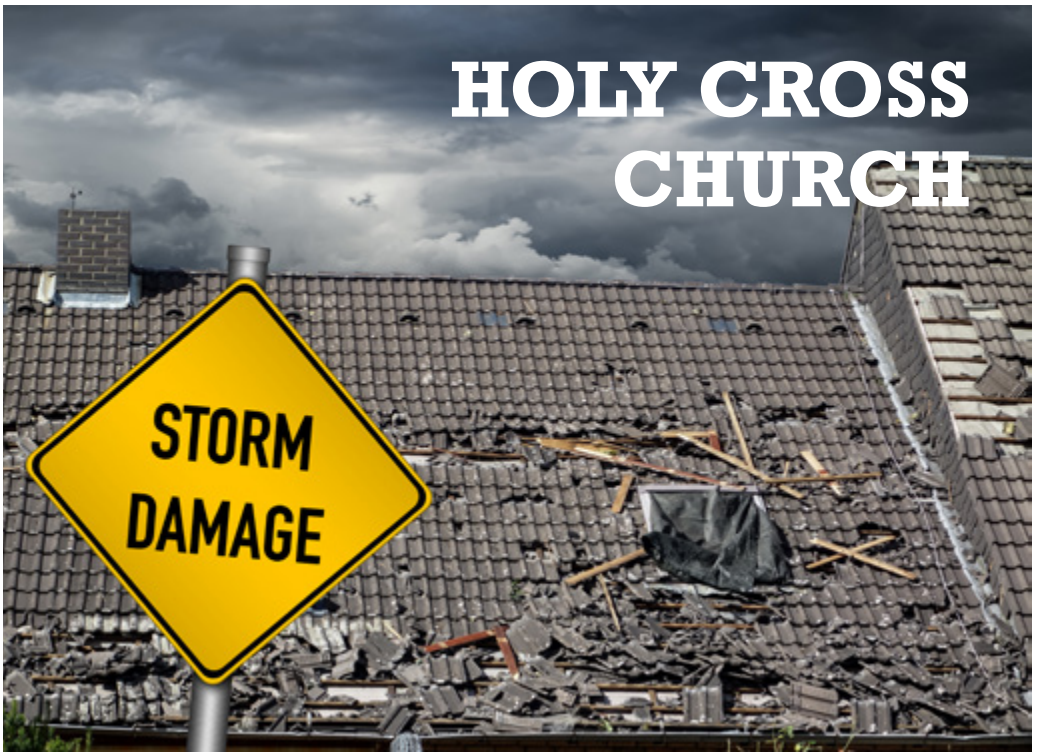
It costs us around £1 to produce each copy of the magazine and we publish 10 editions per year. So, if you feel your magazine is of value to you and your community at £10 per year per house you can email the magazine treasurer at bentleytreasurer@benbinfro.co.uk or contribute online by scanning the QR code below or going to our donations page at:

<https://tinyurl.com/2tv9rtxu>



Thank you for helping us keep the magazine as something for everyone in Bentley and Binsted.

HOLY CROSS CHURCH



Sorry!

We are so sorry to cause any inconvenience, but the Church & Churchyard, unfortunately, will be temporarily closed on occasions over the next couple of months while the contractors repair the storm damage to our beautiful 12th Century church due to Health & Safety Reasons.

The good news is that it is being restored and will look even more beautiful than before when it is completed!

Benefice Update

The search for a new Rector

Sadly, we had no candidates respond to our recent advert, so we are just advertising the vacancy again and we now hope to be holding interviews towards the end of August.

Thank you to all who have stepped up to support Christopher and David by leading services or preaching and thank you all for your prayers for the recruitment process.

The Benefice Team

Bentley CE Primary

June 2022 Jubilee Celebrations at Bentley CE Primary School

We all enjoyed a wonderful Jubilee to celebrate the Queen's Platinum Jubilee. This is what we got up to;

- We had a brilliant day of dance with a West End stage dancer who came and taught every class a 'decade of dance styles' representing all the years Queen Elizabeth has been on the throne. We jived, bopped and street danced our way through the day. There were clips of historic events throughout the decade interspersed through the dancing so we covered a lot of recent history too. Lots of fun!





- Every child created a beautiful portrait of the Queen and we displayed them all in our dining hall before sending them home as special memories. You will have seen the winning one by Harriet in Year 4 as it was used on all the Bentley village event Jubilee posters. Well done Harriet!

Bentley CE Primary



- We planted a beautiful apple tree in our school grounds. The Year 6 class took the lead to ensure the tree was well planted and this will remain a legacy of their final year at primary school forever. A big thank you to our super Gardening Team of volunteers for raising the funds to purchase the tree and in particular to Vicki Coombs for all her support for this project. We have named our tree 'Queen Elizabeth the Tree' and the whole school is making sure she is well watered in this summer heat.
- Every child decorated their own amazing crow to wear and every child was gifted a Union Jack flag. We know lots of children reused these in their family and community events over half term! Many parents chose to buy a special commemorative school mug for their child as a special keepsake of this celebration.
- On the last day before half term we put up the bunting and had a whole school picnic lunch altogether. The sun shone, the kitchen made extra yummy lunches and we had a super time with all our friends. Year 6 had secretly prepared a special Jubilee song to share and they led us all to sing 'God Save the Queen'. A lot of fun was had all round!





School News - Binsted CE Primary

At Binsted we believe in the Christian values of Faith, Hope & Love.

Like the rest of the nation, Binsted joined in with celebrating our Queen's Diamond Jubilee.



We had an amazing party inviting family, friends and the local community to join us for tea and cakes.

We turned our hall into a museum covering the Queen's reign. I was very impressed with our Y6 who acted as school guides, showing our visitors around.



Lennie, the school dog, joined in too!

The children entertained us with poems, readings and songs. Y6 sang the Beatles, here comes the sun, Y4/5 Queen, 'we will rock you', Y2/3, sang and danced the 'Macarena' and YR/1 'who let the dogs out'. The audience participation was amazing too!



We finished our celebrations with singing the national anthem.

The children will have lasting memories of being part of such a momentous celebration.

WAYMARKS...

Maintaining Binsted's Rights of Way network

The weather in May and June, with lots of warm, sunny days punctuated by the occasional heavy downpour, means that the footpaths and bridleways of the parish have dried out nicely and are once again a pleasure to walk along. On the other hand, these are naturally perfect conditions for the vegetation on them to grow apace, and the volunteers have been very busy ensuring the Rights of Way remain passable.

We carried out a thorough inventory of outstanding problems on the Rights of Way network, so that we started with a clear picture of the work that needs to be done over the summer. This includes two larger projects, rebuilding flights of steps. One needs to be completed in conjunction with the Hampshire rangers, who have the equipment required and the skills to pass on to the volunteers. Due to the timing of crop harvesting, this will now take place in August. The second, much larger flight of steps, has been deemed too hazardous for the volunteers to tackle and will now be scheduled as a Rangers-only task.

Another outcome of the inventory is that the Rangers have already been busy in the Parish, with many bridges, stiles or fingerposts being improved or completely replaced. Maybe you have noticed some of them?

If you would like to report a problem on any of the Binsted Rights of Way, you can do so online on the Hampshire “Report a problem on a right of way” page. Alternatively, you can use the volunteer team’s own email address to do so – it is BinstedRoW@gmail.com.

Alton Walking Festival

The biggest ever Alton Walking Festival came to an end on 31st May and was a roaring success, with most walks oversubscribed. Thanks are due to the organisers, walk leaders (some from our group), back markers and of course the walkers themselves, many of whom came from far afield. Photos and news from the Festival will be appearing on the Walk Alton website over the coming weeks.

Next on the agenda will be the Autumn Walking Festival, so keep a look out for news on that. The walks are certain to be as popular as ever and early booking is recommended.

Local walking resources

The free walking leaflets available free of charge from the Binsted Inn continue to prove popular – what better than a pub lunch followed by a good walk? The Three Horseshoes in East Worldham is now also offering a leaflet of walks around their local area. Try one out, but only after you’ve done all of the Binsted Inn ones!

Team news

It has been a case of swings and roundabouts for the Binsted Rights of Way volunteer group. We recruited a new volunteer to the team, who would be able to take on some of the Parish’s paths following the departure of Ian Fleming. The next thing we know, Lou Aparo, our HCC Community Ranger, told us that she will be leaving her position in the summer. Recruitment of a replacement is underway, but there will inevitably be a gap when it will be much more difficult to get working parties organised and resourced to tackle some of the larger projects that we have identified. So it goes!



BOOK REVIEWS

Author of the month: Steve Chalke

Steve Chalke MBE is a British Baptist minister, the founder of the Oasis Charitable Trust, a former United Nations' Special Adviser on Human Trafficking and a regular contributor and commentator on TV, radio and other media.

Book of the month:

“Being Human: How to become the person you were meant to be”, Publisher: Hodder & Stoughton, London, 2015, paperback, 308 pages. 1994, 2001, paperback, 216 pages.

At the time of writing, very good/like new copies are available from www.bookfinder.com from £2.57 including postage and packing.

Life presents us with continual opportunities to think about two very special things. The first is what we do with our lives. The second is who we become while living them. So where do we find a good story – a convincing narrative that makes sense of it all?

Steve Chalke suggests that Jesus' good news about the kingdom of God is the best story to find ourselves in. Each one of us is called to be part of the drama of the coming kingdom. It's in this that we find a practical spirituality that helps shape our lives into everything we were meant to be.

The book has 25 chapters – ranging from “Wake Up!” to “Better Together”. For this reviewer, chapter 3 (“The Big Story”) sets the scene splendidly. Steve Chalke is “fascinated by Jesus”. He reminds us that Jesus said: “I am the way, the truth and the life”. Real faith is about trusting Christ enough to walk in his way through life; it's about letting his story shape our actions, our attitudes, our responses and initiatives.

Jesus told a brilliant short story about a wise man who built his house on rock and a foolish man who built his house on sand. Jesus was trying to get

people to think about who they were and where they were going in life; about who they wanted to become. Jesus said: "Follow me."

The "Better Together" chapter tells us about the Oasis Church in London's Waterloo. The ideas in it however are

just as relevant to those of us who live in rural Hampshire.

We are all designed for relationship - with other people and with God. This is what Jesus meant when he taught that he had come to offer "life to the full."

Happy reading!



BENTLEY MEMORIAL HALL 100+ CLUB

Contact Steve Fice, Chairman Bentley Memorial Hall
01420 22197
steve.fice@btinternet.com

Congratulations to the Winners

The winners for the July and August draw of the Bentley Memorial 100+ Club are:

JULY 2022

- 1st Prize Mr & Mrs K Desmond
- 2nd Prize Adrian & Linda Job
- 3rd Prize Ann Joy

AUGUST 2022

- 1st Prize Christine Goodyear
- 2nd Prize Hew & Jean Pike
- 3rd Prize Peter & Sally Clarke

If anyone is interested in contributing regularly towards the running of the Bentley Memorial Hall, with a chance to win prizes every month, you can join the 100+ Club. Please contact us on bentleymemorialhall@gmail.com for further information.



Residents from all parts of Binsted parish came together in style to celebrate the very special Queen’s Platinum Jubilee.

Binsted and Rowledge schools celebrated with parties before the holiday. The Jubilee Weekend itself got underway with a bang, under clear skies, with the lighting of a Beacon and Fireworks at Binsted Rec on the Thursday evening. Hosts of street parties and thanksgiving services held during the four-day weekend were also much enjoyed. As a lasting legacy, over 70 trees have been planted across the parish, in commemoration of the Queen’s extraordinary life of service to our country.

A gallery of lovely photos from the Jubilee celebrations are on Binsted Parish Council’s website, www.binstedparishcouncil.org.uk. Do take a look!

Events like the Jubilee show just what amazing things can be done when people come together as a community. Our Beacon and Fireworks event would not have

taken place unless the small number of volunteers in the Fete Committee had been willing to organise it. As a parish council, we’re extremely appreciative of the Fete Committee’s efforts. We’d also very much encourage anyone who can give some time to consider getting more involved with volunteer activities in the community – plenty of things need your help!

And... come and meet us at Binsted Fete on 2 July! The Parish Council will have a stand at the Fete, so do drop by and say hello.

Alison Melvin,
 Chair, Binsted Parish Council
a.melvin@binstedparishcouncil.org.uk
 Tel: 07851 677 057



BENTLEY GARDEN CLUB



There are no regular monthly evening meetings now until Tuesday 4th October 2022 but that does not mean we have nothing planned for the summer! Here is what we have planned:

Saturday 16th July – Bentley Fete afternoon. Due to the lack of available helpers we will not be running the Garden Club plant stall this year.

Wednesday 20th July – Afternoon visit to Colmore House Gardens Car sharing. Garden entrance £10 per person to include teas. Plant sales available.

Sunday 4th September – Afternoon visit (1–4pm) to Blounce House @ South Warnborough. Car sharing. Entrance £4 per person to include teas.

Tuesday 13th September – Coach outing to Chelsea Physic Garden leaving Bentley Memorial Hall at 9.30am. Garden entry £10 per person. Café and plant sales available. Coach cost tba.

There has been a disappointing club support for this trip. Unless members who are interested contact Trish now, this trip is likely to be cancelled.

If you are interested in any of the above, please contact Trish Cardy (01420 22325 – trishcardy@yahoo.co.uk) or Andrew Croom-Johnson (01420 23157 – andrewseajay@hotmail.com)

Alice Holt - a national treasure

We live alongside a national treasure. It is woodland of some 2,000 acres wholly within the Parish of Binsted.

It cannot be considered, in any sense, a wildwood, but, rather, it has a history of involvement with the local human population that stretches back to before the arrival of the Romans.

I recently read Roy Waight's excellent book, 'Alice Holt - A Brief History', which allowed me to understand what a complex history it has had and helps explain the complex nature of the wood as it now is.

It seems likely there has been a forest here since the end of the last ice age, and certainly since the 'big melt' of the fifth millennium BC, when the climate warmed dramatically and Britain was separated from the European mainland (Brexit v1, you might call it) by a tsunami of melt water coming down from what is now Norway. However, it was only with the arrival of Celts and subsequently Romans, that there was any largescale exploitation of the Holt's resources. This came with the

establishment of a major pottery industry around Abbott's Wood. The white stone monument of a Roman pot that stands at a corner on the Shipwright's Way as it passes through Abbott's Wood is a well-chosen memorial.

It was not called Alice Holt at that time. The name comes from that of Bishop Aelfsige of Winchester who lived only a hundred years before the Norman Conquest. Holt is an old english synonym for 'forest', so Alice Holt Forest is an unnecessary repetition.

There are subdivisions of the Holt into Inclosures, the largest of which is Glenbervie Inclosure. It is here that all the visitor facilities – the café, Go Ape, the (hugely expensive) car park, etc. are situated. Even these have an historical context, as this part of the forest has had a recreational purpose all the way back to the hunting parties of the Norman kings. Lodge Pond, for instance, was created in the eighteenth century for the enjoyment of the 'great and good'. Now you can fish its monstrous carp provided only that you are a member of Farnham Angling.

Then there are other inclosures – Holt Pound, Abbotts Wood, Great Lodge, Goose Green, Straights, Willow Green – all of a similar size to Glenbervie, but only in Lodge Inclosure is there any real risk you'll bump into another person. What you will find there for sure is a huge variety of tree species, especially in the Arboretum accessible from Gravel Hill Road car park.

Lodge Inclosure is the home of the Forest Research Station, and its immediate surrounds are the only part of Alice Holt where the general public is not encouraged to walk. This leaves many miles of easy paths to explore and to observe the diversity of nature.

The stars of the show, though, for most of us, must be the deer. A sight of these beautiful creatures is always special. These days they consist entirely of roe deer and muntjac. The fallow deer and red deer were long ago shipped out to locations where there might be less leakage due to poaching. Indeed the struggle to preserve the Holt for the benefit of the few was long and hard, and perhaps most dramatic in the eighteenth century when gangs of

discontents blacked their faces and committed acts of poaching and vandalism as attacks on the institutions of state and church. The response of officialdom

was the draconian 'Black Acts' of 1723.

Almost exactly two hundred years later, the Holt finally passed into the hands of

the people in the form of the Forestry Commission, and I personally thank them for the work that has been done since then to make its beauties available to all.

Wickham Institute, Binsted - Registered Charity No. 1090864



THE WICKHAM INSTITUTE (VILLAGE HALL), BINSTED

www.wickhaminstitute.co.uk



LOTTERY FUNDED

The Wickham Institute 100+ Club

As promised, listed below are the lucky winners of the June 2022 draws:

JUNE 2022

1st prize Trevor Blaber

2nd prize Janet Burton

3rd prize Keith Mentzel

Details of the July & August 2022 draws will appear in the September magazine.

REMINDER TO TICKET HOLDERS: Many ticket holders will have needed to renew their subscriptions in June and should have received details by email or in the post, unless they pay their subscriptions by standing order. Thank you to those that have renewed their subscriptions. If you still wish to participate and have not yet returned the renewal form, please do so as soon as possible so that you can be entered into the next draw.

Remember each number only costs £12 (£1 per month) and you have three chances to win each month!

50% of the monthly purchase price of each number goes in prizes and 50% to the running costs of The Wickham Institute. The more people that participate in the 100+ club, the more money that is paid out in monthly prizes.

If you would like to participate an application form can be obtained from Andrew Croom-Johnson on 01420 23157 or email a request to Andrew at treasurer@wickhaminstitute.co.uk.

NATIONAL GARDEN SCHEME

GARDENS OPEN AT BROADHATCH HOUSE, BENTLEY, GU10 5JJ

SUNDAY 10TH JULY

MONDAY 11TH JULY

TUESDAY 12TH JULY

2pm - 5.30pm

Large garden on the edge of Bentley with good views of Alice Holt. Divided into different areas by yew hedges and walls. Flower borders, mature trees, orchard, meadow and vegetable garden.

HOME MADE TEAS

ADMISSION £5.00, CHILDREN FREE, WHEELCHAIR ACCESS, NO PETS



OPEN GARDENS IN BINSTED

Binsted Place & Wheatley House,
Sunday 3rd July, 12 -6pm

These lovely gardens will be in full bloom,
with roses and traditional herbaceous borders
and will be open in support of local charity:

CARDIAC REHAB

Refreshments/teas will be served at the Wheatley House barn.

Free Parking on site. Disabled access.

Tickets: £7.50 in advance from Cardiac Rehab, or
£8.50 on the door.

Children free.

TICKETS: www.cardiac-rehab.co.uk/shop



Following the closure of Bentley Village Surgery some patients from the local area are now registered at Chawton Park Surgery in Alton. The surgery has a Patient Participation Group, with representatives from our villages, and one of the PPGs roles is to provide a better understanding of how the Practice works and to look for ways of improving communications between patients and staff? The PPG would like to contact patients from time to time to ensure a wide range of views is taken into account.

To enable us to do this, please provide your consent for contact by text or email by completing a Patient Contact Form at <https://www.chawtonparksurgery.nhs.uk/patient-participation-group>

Patients without internet or access to a mobile phone can give written consent by writing to the PPG c/o Chawton Park Surgery.

After 3 years, time for a new Chair



Bentley
PARISH COUNCIL

Taking on the role of Chairman can seem quite daunting at the beginning but when you have a competent and well organised Clerk then the role is much easier.

From 2020, we had to cope with lockdown and to conducting our meetings on Zoom for well over a year. The biggest Zoom meeting I Chaired was the proposed development of 97 houses East of Hole Lane. We had something approaching 50 residents attending which was quite a challenge!

One of the first essential administration projects I undertook was to set up a 'proper' accounting system. We determined that a cloud-based system was perfect for the job, we can now produce clear accounting reports at a touch of a button.

To reach younger residents we decide that we needed to have a social media presence and also a more current website.

We now have Facebook and Instagram accounts with the number of 'followers' increasing every time I check, we currently have 246 Facebook followers and 140 Instagram followers.

After a lengthy period of reviewing other Parish Council websites and settling on a new web design company we selected the website style from their portfolio, updated our content and finally have our own new site and new email system.

I am also particularly pleased with the result of the pond rejuvenation, tree pruning, and replacement of broken fences and I think you will agree that the pond area looks better than ever.

I would like to say a special thanks to Emma for all her help and assistance. For a Parish Council to work effectively it is vital to have a competent and proactive Clerk. Also special thanks to John Fuller for his detailed knowledge on Planning and his well thought out and produced comments on the major planning applications which we had to deal with. Also, to all the councillors

who have done their part and have supported me. I wish John the best for the coming 12 months.

I was asked by a former Chairman in the early days if I was enjoying the role to which I replied “not really enjoying it exactly”! However, I can say that our performance and progress as a Parish Council has been very satisfactory and I can at last say I enjoyed the experience.

John Goodyear

Cllr John Goodyear is now taking on the Vice-Chairman role, and Cllr John Fuller is our new Chairman.

Go to the website: <https://bentleyparishcouncil.gov.uk/parish-meetings/agendas-and-minutes> to view the full reports of the Annual Parish Assembly and AGM.

Follow us on Facebook and Instagram:

@bentleyparishcouncil
 @bentley_parish_council

www.bentleyparishcouncil.gov.uk

MAY 2022 WEATHER STATISTICS



Temperature



Daytime maximum	24.9°C (17 th) to 14.6°C (30 th) 18 days above 20°C and only 2 days below 15°C
Nighttime minimum	0.1°C (9 th) to 12.3°C (16 th) 7 nights below 5°C



Rainfall



Total for month	1.74 inches (44.2 mm) over 5 days
Wettest days	0.51 inches (13.0 mm) (15 th)



Wind



Dominant wind direction	South West
Maximum gust	22 mph (25 th)

Parish Weatherman

BENTLEY FLOWER SHOW

SATURDAY 16 JULY

For full details and to enter online visit
www.bentleyflowershow.weebly.com

Section A Flowers

- 1 One stem of your favourite Rose
- 2 One stem of a Floribunda (Cluster) Rose
- 3 One stem of a scented Rose
- 4 A bowl of Roses
- 5 Five stems of Dahlias, one or more varieties
- 6 A bowl/vase of mixed Flowers from your July Garden
- 7 A display of Flowers, all one colour, with at least 6 stems, mixed or single variety
- 8 A vase of Sweet Peas
- 9 One stem of a Lily (Lilium)
- 10 Five stems of annuals and/or Biennials
- 11 Five stems of Herbaceous Perennials
- 12 Three tall flower spikes (eg. Delphinium Acanthus /Foxglove/Hollyhock, mixed or not)
- 13 Five stems of any other flowers not listed in this section, mixed or all one variety
- 14 Five Violas, Pansies, Pinks, mixed or all one variety
- 15 A bunch of fresh Lavender
- 16 Three stems of a Flowering Shrub
- 17 Five Clematis blooms – one or more varieties, sprays acceptable
- 18 One named flowering Pot Plant (indoor or outdoor)

Section B Floral Arrangements

- 19 An arrangement of flowers/foilage in an unusual container
- 20 An arrangement for a circular summer table
- 21 A Platinum Jubilee Arrangement
- 22 A vase of flowers from a wildflower area in your garden (must be from your garden only)

Section C Fruit and Vegetables

- 23 Display of any July Produce on a tray/trug/basket/box from your vegetable garden or allotment
- 24 A Lettuce
- 25 Three Onions as grown, washed but not peeled or plaited
- 26 Five Shallots up to 50mm diameter as grown, washed but not peeled or plaited
- 27 Seven pods of a Legume variety, mixed or not (Peas, Beans – Broad, French, Runner)

- 28 Five Potatoes
- 29 Three Courgettes – max 15 cm
- 30 A Cucumber – longer than 20 cm
- 31 Five Carrots, washed with tops left on
- 32 Three Beetroots, washed with leaves left on
- 33 Little and Large – one small, one large of the same vegetable
- 34 An unusual or exotic vegetable
- 35 Three sticks of Rhubarb, leaves trimmed to approx. 7.5 cm
- 36 Five Gooseberries – on a plate (stalks attached)
- 37 Collection of soft fruit (Quality not Quantity)
- 38 An unusual or exotic fruit
- 39 Collection of five different named Herbs – displayed in a pot or jar

Section D Produce

- 40 Your favourite Pickle or Chutney
- 41 One pot of Jam or Jelly
- 42 One pot of Fruit Curd (eg. Lemon, Passion Fruit etc.)
- 43 One loaf of Artisan Bread
- 44 One pot of Marmalade
- 45 Drink (alcoholic) – One bottle (eg. Sloe Gin or Wine)
- 46 Drink (non-alcoholic) – One bottle (eg. Elderflower Cordial etc.)
- 47 6 decorated Cup Cakes
- 48 Anyone-Can-Bake-Cake: a traditional Victoria Sponge with jam filling
- 49 A Platinum Jubilee Cake
- 50 A Tea Loaf (see full recipe online)
- 51 6 savoury scones
- 52 6 home-made biscuits
- 53 A 'Little Nest Egg' – a nicely presented nest of 6 eggs

Section E Children's Classes

- 54 Pre-School A Butterfly
- 55 Yr R Under the Sea artwork (A3)
- 56 Yr 1 Castles (cereal box size max)
- 57 Yr 2 Space rockets (cereal box size max)
- 58 Yr 3 Local art and photographs (A4)
- 59 Yr 4 A design for a Viking artefact
- 60 Yr 5 An Egyptian Style Mask
- 61 Yr 6 Pop Art (A4)



Bentley Fete & Flower Show 2022

Saturday 16th July – from 2pm



Don't miss the Fete this year, we will have The Glenn Miller Band, a cavalcade of Cars, a display by Springbox Gymnastics, and of course the Flower Show in the main marquee, plus so much more but this year entrance is by donation.

And all this will be followed by a **Party on the Park** in the evening featuring a live band.

2nd Bentley Scouts Update



2nd Bentley Scouts would like to thank everyone that helped raise just over £2000 for the group at the recent Jumble Sale. Thanks to everyone that donated, helped before and on the day, it is always a fantastic team effort. The money will go towards supporting the sections activities and some new kit that is needed.

Date for the diaries, the next jumble will be on the 17th September! Other fundraising includes running the BBQ at the Fete, running a water station at the Alton 10K run and our Scouts going on overseas adventures are planning a quiz for the 8th October, watch out for more information!

We were proud to support the 'lighting of the Queen's Platinum Jubilee Beacon' procession last week and look forward to planting trees at Pax Hill as part of the Queen's Canopy in the autumn.

As we write plans are underway for Group camp in June and Summer camp in July which many of our young people are really looking forward to after a 2 year break. We are visiting Ferny Crofts in the New Forest next weekend and going to Sussex for Summer Camp with the Scouts and Explorers.

Please get in touch if you would like to join our group, young people (aged 4 - 18 years) and adults!



CURTIS MUSEUM & ALLEN GALLERY

(01420 82802)

OPENING TIMES

Tuesday to Sunday

Curtis 10am – 4.30pm. Allen 10.30 – 4pm

www.hampshireculture.org.uk/curtis-museum

www.hampshireculture.org.uk/allen-gallery

ALLEN GALLERY

Monsters, Myth and Magic

The story of the first Anglo-Saxon settlers and how many of the myths, legends and beliefs that occupied their pagan world are still with us today.

The early Saxon settlers were skilled sailors, hunters, farmers, and metalworkers. They were also keen storytellers and many of their stories were about the Gods, monsters and magic they believed influenced the world around them, from the raging seas they sailed across to the dark forests they hunted in.

Amazing objects from the early Anglo-Saxon cemetery in Alton tell us a lot about their lives and beliefs. From the glory of the **Alton Buckle**, on permanent display in the Curtis Museum, to the weapons they fought with and the personal items they took with them to the next world.

Many of these objects would have acted as talismans, offering a link with the Gods they relied on to protect them in life and death. Gods that have survived down the centuries, whose names are, literally, in daily use and who live on through new stories told through comics, TV, games and film.

This exhibition offers an opportunity to see many of the incredible objects from the Alton Anglo-Saxon cemetery that are not normally on public display. FREE

Monsters, Myth and Magic is a family friendly exhibition that offers plenty of hands-on activities, dressing up, colouring in, quizzes and games.

16th July to 25th September, Allen Gallery, Alton.

SAXON STORYTELLING For FAMILIES

Saturday 6th August. £5 per (accompanied) child.

More details from the Gallery 01420 82802 or the website.

MUSIC In the Gallery Garden.

Performers to include Ancora, Innaccord and Allan Manning & Friends.

Saturday 16th July, 1pm -3.30. FREE, donations welcome.

WORKSHOPS

Judith Venn Jellyfish Monday 27th July

Sachiko Mason paper lilies Monday 15th August.

Details nearer the time from the Gallery on 01420 82802 or the website.

CURTIS MUSEUM

Continuing the Anglo-Saxon theme, we are delighted to welcome back WEOROD, the historical re-enactors. They will be camped on the green next to the Museum, showing us what everyday life was like in Anglo-Saxon times.

Afterwards, pop into the Museum to look at the real thing – the **Alton Buckle**. Saturday 13th August. FREE, donations welcome.

Don't forget **DOLLS' HOUSE DAY**

23 July, 10.30am to 4pm FREE

Looking for a Nanny

We are a family in Bentley looking for a nanny for 4 afternoons a week (Tuesday to Friday) and occasional evening babysitting, starting in September, looking after a 4-year old girl and 1-year old boy. We are slightly out of the village so driving is essential. If you are interested please contact us on cowbridgeroad1@gmail.com.

CHARLES READ & DAUGHTER

INDEPENDENT FUNERAL DIRECTORS & MEMORIAL MASONS



24 HOUR PROFESSIONAL
& PERSONAL SERVICE
PRIVATE CHAPELS OF REST
PRE PAID & PRE ARRANGED FUNERALS

01420 83551

www.charlesreaddaughter.uk

11-13 Turk Street, Alton, Hampshire GU34 1AG



HOME COMPUTER SUPPORT & TUITION

" My PC Home Help ! "

Friendly, Professional Support for Windows PC, Apple Computers, iPads etc.



Computer Repairs, Virus Removal & Upgrades
Broadband Wired/Wireless Solutions & Setup
One To One Home Tuition for all Abilities
Smart TVs and other Home Technology
I Supply, Install & Support PCs, iPads & iPads

Call RICHARD SIERS on Bentley (01420) 22844
enquiries@myPChomehelp.co.uk

visit: www.myPChomehelp.co.uk

ADVERTISE YOUR BUSINESS HERE

CONTACT US

magazine@benbinfro.org



Out & About

Your Local Mobility & Independent Living Specialists



- Riser Recliner Chairs
- Rollators
- Stairlifts
- Powerchairs
- Beds
- Scoters and more...



AIDS TO MAKE LIFE EASIER

Free Home Assessments
Call: 01420 549481

www.outandabout-uk.com

25 Southview Rise Alton GU34 2AB

CATHERINE HADFIELD LGSM

PIANO AND THEORY LESSONS
ADULTS AND CHILDREN

PREPARATION FOR GRADE EXAMS AT ALL LEVELS
BINSTED PLACE, BINSTED, GU34 4PQ

TEL. 01420 23146 / 07774 908 416 E-MAIL MaxHad@AOL.COM

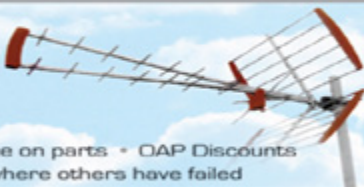


PR AERIALS

DIGITAL TV & SATELLITE SPECIALIST



Paul Rolfe



Free Quotes • Service & Repairs • Full Year Guarantee on parts • OAP Discounts
TV installations considered • Freeview achieved where others have failed

T. 01420 80650 M. 07918 913194
www.praerials.com

SAM BALL TUITION

MATHS AND MUSIC TUITION

Teaching is a passion of mine and it's so exciting to see my students achieve that light bulb moment and get excited about their subject!

I have been teaching Music and Maths for the past 9 years. I have achieved A level grade A in both these subjects and have a degree in Theology and Music. I also have a clear enhanced DBS check.

So, if you have always wanted to learn a musical instrument, develop your music skills, or progress in your maths, please send me an email or contact me through my Facebook page.

**TEACHING MATHS, DRUMS,
GUITAR & PIANO**

FACEBOOK: <https://www.facebook.com/samballtuition/>

samballtuition@gmail.com



GCSE Tuition

Contact Juana

juana.garcia@live.co.uk





M. W. SHAW – FARRINGDON

*Antique Clock Repairs
& Restoration
House calls undertaken
All work guaranteed
Tel. Mr. M. W. Shaw
01420 588457*

Farm Shop & Cafe



Organic Beef, Lamb & Pork
Meat Boxes from £59,
Fresh 'Artisan' Bread, Fruit+Veg
Local Hampshire produce
AWARD WINNING SAUSAGES, BACON!

Farm trails, walks + hot drinks, cakes!

Tel/Fax 0142022331
Open: Wed- Sat 9am-5pm
Isington Nr. Alton GU34 4PN
www.millfarmorganic.com



THE WICKHAM INSTITUTE (Binsted Village Hall)



Having a party? Need a venue for a one-off meeting or conference?
Looking for somewhere to hold a regular club/society meeting or class?

Why not consider hiring our lovely Grade II listed hall. It is light and airy, with a stage and a modern kitchen. The hall can seat up to 80 at tables or set up for conferences and meetings, and can accommodate up to 120 standing (Covid restrictions may apply).

We have very reasonable hire rates, why not contact us.



**For bookings or further information,
please contact the booking secretary on
01420 22388 or visit our website
www.wickhaminstitute.co.uk**



ECS**Tel: 01420 561 777**email: info@easycleanservices.co.uk**Tanker Services**

Cesspits - Cesspools -Septic Tanks
 Treatment Plants - Pump Stations
 Gully and Interceptors
 Grease Traps

Drainage

Drains and Pipes Unblocked
 High Pressure Jetting
 CCTV Surveys
 Drain Re-lining - No Dig Repairs

Servicing

Servicing of Sewage Treatment Plants & Pump Wells
 British Water accredited engineers
 Supplier of Pumps and consumables
 Regular maintenance contracts or one-off services

**COUNTY Oil Tank SOLUTIONS**

— The Oil and Water Tank Specialist —

Free Tank Surveys

Domestic & Commercial Tank Replacements

Tank Servicing & Tank Disposals

AGA & Rayburn Servicing

GAUGES supplied and fitted • Hire Tanks

Commercial Jobs Undertaken

24 Hr Emergency Call Out for Failed or Leaking Oil Tanks and Pipework

Call us on **07799 643455** for ALL your tank needsjames@countyoiltankolutions.com • www.countyoiltankolutions.com

FREELAND RESTORATION LTD

ANTIQUÉ FURNITURE RESTORATION AND UPHOLSTERY

ALL RESTORATION AND CONSERVATION PROJECTS CONSIDERED

JUSTIN FREELAND

2 LASCOMBE ESTATE, HIGHFIELD LANE
PUTTENHAM GU3 1BB

WORKSHOP@FREELANDRESTORATION.COM
TELEPHONE 01483 811608
MOBILE 07771 953870



**Residential Conveyancing - Wills -
Powers of Attorney - Probate -
Commercial Property - Property
Development - Dispute Resolution**

Instant conveyancing quotes available via our website
www.downieandgadban.co.uk

We are here to help you.
Call **01420 82879** or email us at
info@downieandgadban.co.uk

Why Choose Us?

We pride ourselves on being friendly, approachable and professional. We have been in our current building at the end of the High Street in Alton (close to M&S, The Ivy House and The White Horse) since 1962 and have been serving generations of families in the Alton area since 1905.



www.downieandgadban.co.uk

Rockbourne House, 100 High Street, Alton, Hampshire, GU34 1ER

Bentley Memorial Hall

The perfect venue for celebrations, weddings, children's parties, meetings, specialist classes or exhibitions.

Conveniently located in the centre of the village with kitchen facilities and ample car parking.

Main hall accommodating up to 100 people and two meeting rooms accommodating up to 60 people each. Main hall and one meeting room can be combined for larger events.

For more information and to book the hall, please go to the website www.bentleymemorialhall.org



ACORNS B&B



Acorns is a self-contained guest cottage, located in the picturesque village of Lower Froyle.

It has its own entrance, parking, and a south facing terrace which offers beautiful views across open fields.

It has a generous double bedroom, comfortable sitting room with a smart TV, and a luxury shower room, together with a small but well-equipped kitchen.

A complimentary continental breakfast basket will be provided for your stay, along with a selection of Twinings teas and Lavazza coffee pods.

Contact Alice for further information on 07768 165233 or ghinns@gmail.com



STEVE LACEY
HYPNOTHERAPY

Help with anxiety, stress, OCD, depression & more
Normalise phobias & help to stop smoking

Fully insured, registered & DBS checked to work with
children and vulnerable adults

07393 739326

www.stevelaceyhypnotherapy.com

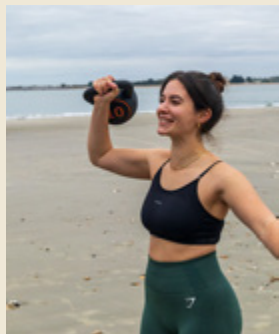
**ADVERTISE YOUR
BUSINESS HERE**

CONTACT US

magazine@benbinfro.org

Keep Fit With Kit

MOBILE PT | ONLINE COACH | GROUP SESSIONS



I'M KITTY, A MOBILE PERSONAL TRAINER FROM BINSTED. WORK WITH ME TO:

- IMPROVE YOUR CONFIDENCE
- OVERCOME GYM ANXIETY
- IMPROVE YOUR STRENGTH AND MOBILITY
- JOIN A COMMUNITY
- BUILD SUSTAINABLE HABITS THAT LAST

BOOK A FREE CONSULTATION

07471687927 | KEEPFITWITHKIT@OUTLOOK.COM | WWW.KEEPFITWITHKIT.COM

Yoga Classes

All levels welcome
FREE first class

Thursday, 6.15pm
Binsted Village Hall

Thursday, 8pm
Online

Sunday, 9am
Bentley Memorial Hall



WWW.SANGATYOGA.CO.UK
HELLO@SANGATYOGA.CO.UK



YOGA CLASSES

Mondays
12.30 pm at
Wickam
Institute,
Binsted

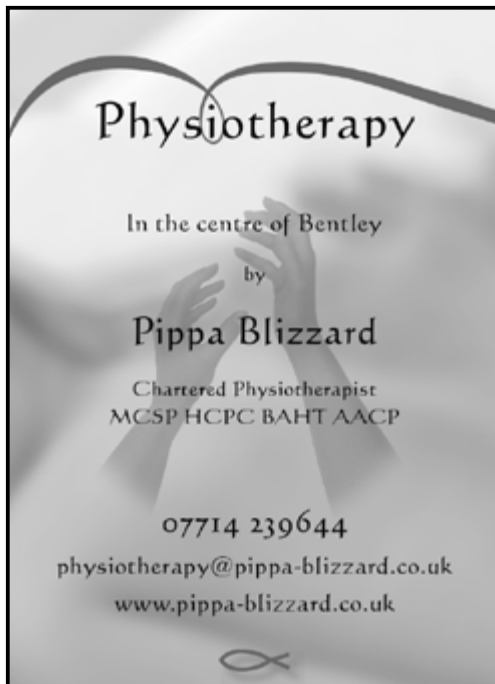
Wednesdays
6.30 pm at
Bentley
Memorial
Hall

Book now
www.juanagarciayoga.co.uk

**ADVERTISE YOUR
BUSINESS HERE**

CONTACT US

magazine@benbinfro.org




Physiotherapy

In the centre of Bentley
by
Pippa Blizzard

Chartered Physiotherapist
MCSP HCPC BAHT AACP

07714 239644
physiotherapy@pippa-blizzard.co.uk
www.pippa-blizzard.co.uk





Cressida Mizen
REFLEXOLOGY

PROFESSIONAL & PROFOUND
THERAPY IN A TRANQUIL SETTING

**REBALANCE
RELAX · RESTORE**

TO BOOK, CONTACT
CRESS@CRESSIDAMIZEN.COM
07939 505727

WWW.CRESSIDAMIZEN.COM
Aylesfield Farm House,
Froyle Road, Shalden, GU34 4BY

Pip Lacey
FOOT HEALTH
Home visits for
professional foot care



Local to Bentley
07900 927 856




Oak Park Clinic

OSTEOPATHY
MASSAGE
REFLEXOLOGY
HYPNOTHERAPY
BABY MASSAGE CLASSES
1:1 PILATES

Telephone 01252 850 800
Book online www.oakparkclinic.co.uk

The Old Parsonage, Church
Street, Crondall, GU10 5QQ

ADVERTISE YOUR BUSINESS HERE

CONTACT US

magazine@benbinfro.org



ALTON COUNSELLING SERVICE

counselling for the community



are you finding life difficult?

Counselling gives you an opportunity to explore any problems and issues with a counsellor who will listen and help you explore and understand your feelings, thoughts and behaviour. We provide low-cost counselling service via ZOOM or TELEPHONE.



01420 89207

admin@altoncounselling.org.uk
www.altoncounselling.org.uk



BEN MACDONALD ASSOCIATES

Chartered Architects & Surveyors

- Extensions
- Refurbishment
- One off Houses
- Farm Building Conversions
- Listed Building Alterations

Total design and management Service

Hoggatts House, Kingsley
Bordon GU35 9NY
Tel. 01420 488556

email: benmacdonald_architect@hotmail.com

THORNE & CO

TAXATION CONSULTANTS

Friendly, efficient service to deal With your Accounts and Self-Assessment Returns

Initial Interview Free
Evening appointments available

01420 22998

Email: thornebentley@aol.com



AWARD WINNING LOCAL TOILET HIRE

Luxury Trailer Toilets
 Luxury Showers
 Single Portable Toilets
 Accessible WC's & Urinals
 Long Term Building Site Loos

01420 588 355
hello@loos.co.uk
www.loos.co.uk



Reliable, friendly garden services in Bentley and surrounding areas.



- Mowing
- Hedges
- Weeding
- Planting
- General garden care and maintenance

Please get in touch to discuss your gardening requirements and I will be happy to help.

David Green: 07594 123416
 greengardenerGU10@gmail.com

IAN HARDY TREE SURGEON

- All aspects of Tree Surgery
- Woodland Maintenance
- Hedge Cutting
- Land Clearance

t: 01252 706978
 m: 07778 918007
 e: ian.hardy@tree-art.co.uk
www.tree-art.co.uk

ADVERTISE YOUR BUSINESS HERE

CONTACT US
magazine@benbinfro.org

ADVERTISE YOUR BUSINESS HERE

CONTACT US
magazine@benbinfro.org

MARTIN CASHMORE FENCING LTD SUPPLIER & CONTRACTOR

Our family run business was established in 1982. We are located just outside Farnham on the A325. We stock a large quantity of Fencing Materials, Oak and Softwood Sleepers, Gates, Wire Fencing, Tools, Fittings and much more.

We offer a prompt delivery service to a wide area.

We supply and install all types of Fencing and Gates, please contact us for a free quote.

01420 521040 sales@cashmorefencing.co.uk

www.martincashmore.co.uk



Unit 2, Halfway Farm, Dockenfield Road,
Bucks Horn Oak, Farnham, GU10 4LP





BEAUTIFUL MARQUEES
FOR EVERY OCCASION

For more information call us or visit our website

Tel. 01420 488477

www.FourSeasonsMarquees.co.uk

Jane Stockdale

HOME COOKING

FOR SMALL OCCASIONS

Dinners, Luncheons, Buffets,
Drinks Parties, Tea Parties,
Children's Parties,

After Service Gatherings.
Cooking for the freezer
and individual dishes.

SPECIALISING IN
CAKES AND CANAPES

**Please call 01252 723161
or 07775696918**

janestockdale01@hotmail.co.uk



Food Affair Catering

Caterers for any occasion

Delicious food beautifully
presented

Call Amanda on
Tel: 0778 732 6982

Email: foodaffair@hotmail.co.uk

www.food-affair.co.uk

ADVERTISE YOUR BUSINESS HERE

CONTACT US

magazine@benbinfro.org

HANDLEY AND SON Ltd

Service, Repair and Tyre Centre

Family run business for more than 30 years

Laser tracking system

Free fitting value and balance

We offer discounts to Keyworkers

Call 01420 489541

or 01420 23623

Mark or Paul for a fast and friendly service

Unit 2H Blacknest Industrial Est GU34 4PX

24/7
CALL OUT

ALTON PUMP SERVICES

BLOCKED DRAIN? PUMP PROBLEMS? TANK NEED EMPTYING?

We'll keep you flowing

- ✔ Blocked Drains
- ✔ Pump Supply & Service
- ✔ Drain Jetting
- ✔ CCTV Drain Survey
- ✔ Septic Tank Empty*
- ✔ Treatment Plant Installation

www.altonpumps.com

ACT NOW

24 HOUR CALL OUT

CALL: 01420 561661



GAVFRESH **CARPETS**

Local Bentley insured carpet cleaner
 Dry extraction Carpet Cleaning - Dry within two hours
 Houses from £70 and Flats from £50

07855 279308
 gavfreshcarpets.com

Simon Sharpe **SE Electrical**

All electrical work carried out
 Including
 re-wiring, extra sockets, fault finding,
 lighting, *commercial, PAT Testing,*
Fixed Wire Testing
 Electric Car Charge Sockets

34 years' experience
 Contact Simon - 24 hour call out

07720851398
 or
 01420 477542

C.S. EMBLING **THE CABINET REPAIR** **SHOP**

Woodlands Farm, Blacknest,
 Alton, Hants GU34 4QB
 Office Tel: 01252 794260
 (Frensham, Surrey)

Antique Furniture Restoration
Modern Furniture Repairs
French Polishing & Other
Finishes
Insurance Claim Repairs

ROBERT MOODIE

at Clare Laughland Interiors
 Master Upholsterer
 since 1973



Is your sofa or perhaps your favourite chair
 In need of a little loving care?
 Don't push it aside or take to the 'tip'
 Just give us a ring and we'll mend it.

Loose covers or fitted, or down to the frame
 We will restore it, elaborate or plain
 Fabrics and braids for us to enhance
 Our craftsmanship's shown if given the chance.

Specialists in reupholstery of antique and
 contemporary furniture
 The Old Milking Parlour, Mellow Farm, Dockenfield,
 Surrey, GU10 4HH - 01428 712886
 robertmoodie@clarelaughland.co.uk



Specialists in green oak framing
Jointed and pegged
in the traditional way

Garages, Pool Houses, Pergolas,
Garden Offices, Porches

Highest quality buildings,
Made bespoke to order in Froyle

Contact: Graham Menzies
01420 23452 / 07980 348 667
gbelmore@btinternet.com

Alpha decor

Guild of Master Craftsmen
Member

01252 724675

davidhorne52@btinternet.com

Complete decorating service

Interior and exterior painting

Wallpaper hanging

In business locally over 30 years

David Horne

BENTLEY JOINERY

Quality Purpose Made Joinery

***Sliding Sash Windows, Doors, Staircases,
Custom Made Furniture,
Oak Barns Made to Your Own Design***

***Unit 2A, Blacknest Industrial Park
Blacknest Road, Alton
Hants GU34 4PX***

***Tel/Fax: 01420 22252
Email: info@bentleyjoinery.co.uk***

ROOKERY BARNES LTD

Your local supplier of oak framed barn-style buildings



The Complete Service

- ◆ Design
- ◆ Planning
- ◆ Groundworks
- ◆ Construction

Contact us now for a free
consultation

tel. 01420 488870

www.rookerybarns.com



WAYNE COLLINGBORN

07875 207208

w.collingborn@btinternet.com

**INTERIOR AND EXTERIOR DECORATOR & HANDYMAN SERVICES
PRIVATE & COMMERCIAL**

SERVICES AVAILABLE:

*Painting, Tiling, Carpentry, Wallpaper Hanging, Decking, Fencing,
Fascia & Gutter Cleaning, General Repairs, General Maintenance.*

CONTACT ME FOR A FREE ESTIMATE

(References are available upon request)

MJP Plumbing & Heating Ltd

Helpful friendly plumber.

Will do all the jobs that need doing from a tap washer to refitting your bathroom.

Servicing to replacing boilers. **Just ask, no job too small!**

Works with all systems – heating and plumbing.

Gas Safe registered

Contact **Mike** on **07768 844276** or email *mike@mjpplumbing.com*

Simons Decorating Services

All aspects of Interior & exterior painting/decorating

Low cost joinery repairs with RepairCare system

Over 30 years' experience & fully insured

07747002595

simonsdecor@live.co.uk



Andrew Wood

Heating and Plumbing Engineer



- BOILER CHANGES
- BOILER SERVICING
- POWER FLUSHING



Gas Safe No. 15316

- CENTRAL HEATING SYSTEMS
- GAS INSTALLATIONS
- GENERAL PLUMBING

For free estimates or advice telephone: **Bentley (01420) 22637**

MICHAEL NEWSTEAD

Bathroom Installations • Small Plumbing Jobs • Plastering
Tiling • Exterior and Interior Decorating

30 Years' Experience

Free quotations 07960 893369

michaelnewstead70@outlook.com

2 Southview cottages Bentley

R. A. CROFT LTD

Building & Joinery

All Aspects of Building Work Undertaken
Listed, Refurbishments, Extensions
Buildings & General Maintenance
New Houses
Registered House Builder
Landscaping & Mini Excavator Hire

Unit 2A, Blacknest Industrial Park
 Blacknest Road, Alton
 Hants GU34 4PX

Tel/Fax: 01420 521152
 Email: info@racroftltd.co.uk



THE FIRESIDE CENTRE

New Showroom

Please make an appointment

07771 522117

firesidecentre@aol.com



Est. 1994



Marble, Stone and Wood Fireplaces

Solid Fuel, Gas and Electric
 Fires and Stoves

From Contemporary to Traditional
 Bespoke Design Service
 Fitting Service Available
 Kiln Dried Wood



ONYX

GROUNDWORKS & LANDSCAPING

LANDSCAPING

LANDSCAPE DESIGNS, DRIVEWAYS, PATIOS, PATHS, BRICK WALLS,
SLEEPER WALLS, DECKING, FENCING, TURFING, ARTIFICIAL LAWNS

GROUNDWORKS

ALL TYPES OF CONCRETING, RETAINING WALLS, FOUNDATIONS, DRAINAGE,
SWIMMING POOLS, SITE LEVELLING/CLEARANCE, TEMPORARY ROADS

CONSTRUCTION

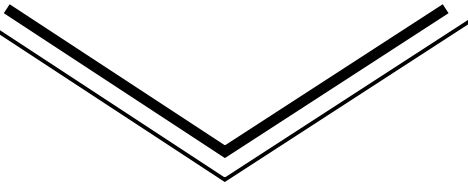
HOME EXTENSIONS, NEW BUILDS, BESPOKE OUTBUILDINGS,
HOME REFURBISHMENTS AND RENOVATIONS, CONSERVATORIES, PORCHES

M: 07825 185352 T: 0800 062 2569

E: info@onyxgroundworks.co.uk

www.onyxgroundworks.co.uk

**ADVERTISE YOUR
BUSINESS HERE**



CONTACT US
magazine@benbinfro.org



HAMMERTONDESIGN

www.hammertondesign.co.uk

LOGO | PRINT | DIGITAL

GRAPHIC DESIGN SERVICES

**ADVERTISE YOUR
BUSINESS HERE**



CONTACT US
magazine@benbinfro.org

BENTLEY

Website: www.bentleyparishcouncil.gov.uk

The Memorial Hall

(Bentley Community Association):

Chairman: Steve Fice Tel. 01420 22197

Email: steve.fice@btinternet.com

www.bentleymemorialhall.org

Badminton Club: Martin Fox 07710 035913

martin.fox62@yahoo.co.uk

Garden Club Chairman

Andrew Croom-Johnson Tel: 01420 23157

Treasurer Patricia Cardy Tel: 01420 22325

District Council

Ken Carter, Brookfield, Station Road, Bentley GU10

5LA. 01420 22576 Email

kenc@comark-associates.co.uk

Parish Council

Chairman: Mr John Goodyear 01420 22133

johngoodyear@bentleyparishcouncil.gov.uk

Clerk: Emma Wadey 07795 326539

Email: clerk@bentleyparishcouncil.gov.uk

Facebook: [@bentleyparishcouncil](https://www.facebook.com/bentleyparishcouncil)

Instagram: [@bentley_parish_council](https://www.instagram.com/bentley_parish_council)

Bentley Memorial Hall, Hole Lane,

Farnham GU10 5LP

Parish Office Hours

Monday to Thursday 9am to 3pm

Bentley School

Headteacher: Katy Pinchess 01420 525010

Email: bentleyschoolptfa@gmail.com

Childcare

Dottie Tots: Karen 07387 576 307

Fête Committee

Chairman: Hugh Chissell, Greystones, Bentley

01420 23117

Flower Show

Chairman: Vanessa Remington 01420 525322

Phoenix Group: Cathy Smith 01420 520169

Bentley Rec Ground

Chair: Stephen Howell

stephenhowell@bentleyparishcouncil.co.uk

Joint Parish Organisations

Care Group (car service)

Bookings: 07775 458873

Secretary: 01420 590697

Girl Guides (at Holybourne)

Lucy Yendell 01420 80560

2nd Bentley Scout Group General Enquiries:

admin@2ndbentleyscouts.org.uk 07974377736

www.2ndbentleyscouts.org.uk

BINSTED

Website: binstedparishcouncil.com

The Wickham Institute

Chairman: Catherine Hadfield 01420 23146

Bookings: Ann Mann 01420 22388

email: annmann074@btinternet.com

www.wickhaminstitute.co.uk

Treasurer: Andrew Croom Johnson - 23157

County Councillor Mark Kemp Gee - 01420

563550, email - marknkempgee@aol.com

District Council

Ken Carter, Brookfield, Station Road,

Bentley GU10 5LA. 01420 22576

Email ken.carter@easthants.gov.uk,

David Ashcroft, 07966 511 868.

Email DavidAshcroft@easthants.gov.uk,

Parish Council

Chair: Alison Melvin a.melvin@binstedparishcouncil.org.uk

binstedparishcouncil.org.uk, 07851 677 057

Vice Chair: Ryan France-Moore r.francemoore@binstedparishcouncil.org.uk

binstedparishcouncil.org.uk

Clerk Lisa Spindler

Tel: 01420 520692 Mobile: 07483 310631

Email: clerk@binstedparishcouncil.org.uk

Website: Binstedparishcouncil.org.uk

Facebook: [@Binstedparishcouncil](https://www.facebook.com/Binstedparishcouncil)

Binsted School

Headteacher: Sharron Morton 01420 23200

Fête and Flower Show

Matt Arrowsmith

thebinstedfete@gmail.com

Tennis and Croquet Club Chairman:

Chair: Nial Dunne 01420 22922 nial.dunne@sky.com

Secretary - Kate Ironside

ladyironside@btinternet.com

Website: <http://e-voice.org.uk/btcc/>

Growmore Club Secretary:

Reita Fisher 01483 570996

Bentley and Binsted Police

Police Rural Beat Officer: Jess Hornsby

Alton Police 101

Binsted Cricket Club

Chairman: John Dineen 01420 617814

or mob: 07747878392

Binsted Football Club

Secretary: Tim Winkworth binstedfootball@gmail.com

Friends of Binsted School (FOBS)

[@FOBSBinsted](https://www.facebook.com/FOBSBinsted) 01420 23200 or

fobs.binsted@gmail.com

Chairman: Alice Cowie

July & August Services

We are continuing to provide online Sunday sermons and worship songs, uploaded to YouTube by Monday morning, and weekday Thought for the Day videos at 6:30am.

3rd July 8am Froyle Holy Communion
11am Oakhanger Holy Communion
11am Binsted Pet Service

10th July 11am Froyle Pet Service
11am Binsted Morning Worship
5pm Bentley Live@5 Big Praise

17th July 11am Bentley Marquee Service
11am Froyle Morning Prayer
4pm Messy Church

24th July 9:30am Binsted Holy Communion
11am Kingsley Holy Communion
5pm Live@5 YumYum
6:30pm Froyle Evensong

31st July 11am Binsted Benefice Service



7th August 10:30am Kingsley Holy Communion

14th August 10:30am Froyle Holy Communion

21st August 10:30am Bentley Holy Communion

28th August 10:30am Binsted Holy Communion
6:30pm Froyle Evensong

